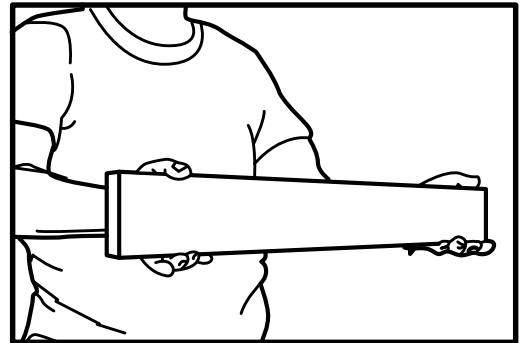
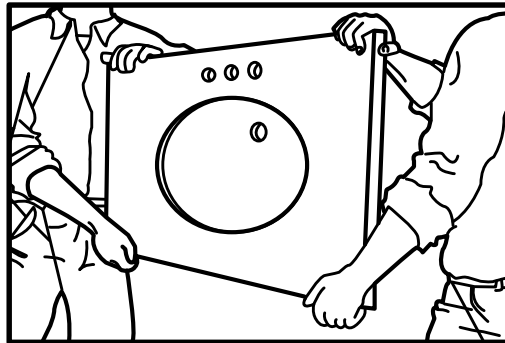


CAUTION!

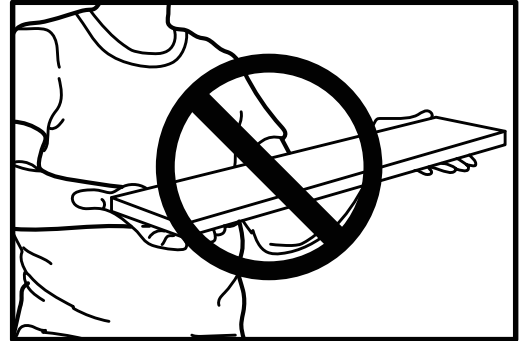
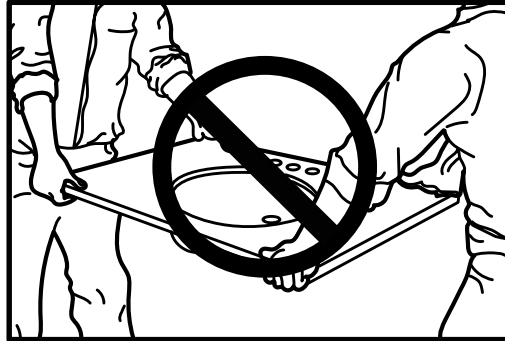
Back and side splashes are extremely fragile if not handled properly. Read carefully before handling your new vanity top!

Only turn the top or backsplash to a horizontal position when you are preparing to install it on the vanity.

LIKE THIS:



NOT LIKE THIS:



Unpacking Your New Vanity Top

Thank you for purchasing a MarCraft Vanity Top. Please read the instructions carefully prior to installing the top. These are basic instructions for installation in a step-by-step sequence that will work in most types of installations. If you have an installation that is not covered here, please contact MarCraft for additional information.

Before Installation: Please contact MarCraft if you feel there is a problem. Warranty states: "MarCraft is not responsible for any removal, installation, or labor cost, or any consequential damages as a result of any defective product."

Please be Advised:

Keep vanity tops in original packaging and keep level until you are ready for installation.

Engineered Marble/Granite/Onyx & Solid Surface Vanity Tops:

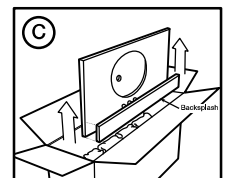
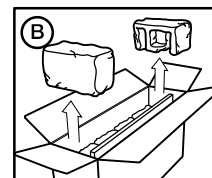
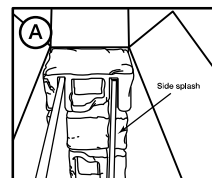
Do not remove protective plastic covering from vanity top. This is used to protect the top surface during installation. Remove the vanity top from the box & support the vanity top firmly while extracting it from the package. Maintain a vertical position while carrying it.

Natural Granite & Infinity Quartz Vanity Tops:

After opening the box, remove the center foam packing blocks. Your sidesplash is packed behind tape within the foam blocks at the ends. (see diagram A). Remove the tape, then carefully extract the sidesplash, and set it on a flat surface.

IF YOU DO NOT REMOVE THE SIDESPLASH BEFORE UNPACKING THE REST OF THE NEW VANITY TOP, YOU ARE AT RISK OF BREAKING THE SIDESPLASH.

Remove the foam blocks at either end of the package (see diagram B). Take care that the vanity top remains well seated in the box and does not come up with the packing blocks as it may drop back down and cause damage to the product. Support the vanity top firmly while extracting it from the box (see diagram C). Do not set the vanity down unsupported. Once properly installed, your new vanity top will be supported around the perimeter and breakage will be very unlikely. If you have any concerns or discover any breakage before unpacking the product, notify MarCraft immediately.



1. Prepare Vanity for Installation

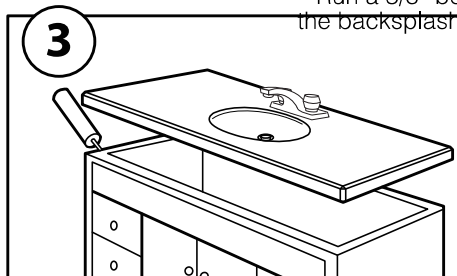
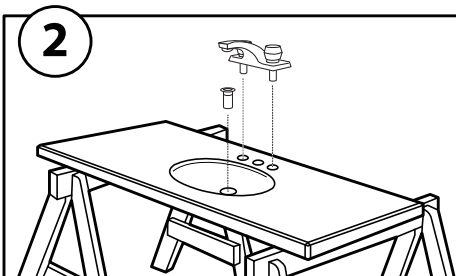
- Clean vanity of all debris.
- Level the vanity front to back, side to side, as well as diagonally.
- Shim the vanity to keep it level and secure the vanity to the wall.
- As the vanity tops are heavy, be certain that the vanity can withstand the weight of the top.

2 Install Faucets

- While supporting the vanity top carefully, install the faucet set according to the manufacturer's instructions.

3. Install the Vanity Top

- Apply a small amount of clear silicone caulk at each corner and the center of the front and back on the top of the vanity cabinet.
- Carefully lower the vanity top onto the cabinet base and set it in place.



- Wipe away any excess caulk from the base and allow the caulk to set and dry (we recommend 24 hours).

4. Install Separate Back and Side Splashes

- Clean the back of the splashes, and "dry fit" to ensure that all pieces will fit tightly before applying adhesives.
- Apply a silicone adhesive to the back side of the back and side splash.
- Place the splashes in place on the surface of the vanity top and against the back wall or side wall.
- Run a 3/8" bead of caulk on the top edge of the splash where it meets the wall. Clear silicone caulk is acceptable, but using a color-coordinated caulk will create a professional finish. Smooth the bead carefully to be sure to fill any gaps due to a non-flat wall. Do not force either splash to compensate for a non-flat wall, but use the caulk to fill in those gaps.
- Run a 3/8" bead of clear silicone caulk in the corner where the backsplash and side splash meet (where applicable).

Care and Cleaning

For routine maintenance and cleaning, we recommend Gel Gloss® Care and Cleaning products. This can be purchased through Marcraft with your top or at your local home improvement center or fine Kitchen & Bath Showrooms.

100% Silicone is the ONLY approved material for use during installation.

Engineered Marble/Granite/Onyx Products:

Gloss Finish (Standard):

Cleaning with a soft sponge or cloth, and a nonabrasive soap or foam cleaner is all that is required to keep your product looking beautiful for years. An automotive buffing compound may be used for any minor scratches. Any lime, rust or calcium deposits may be removed with cleaners made for that purpose.

Matte Finish (Optional):

Clean with detergent or household cleaner. Minor scratches, shiny spots and even cigarette burns can be removed with a Scotch-Brite pad, such as 3M #7447.

Evercor Solid Surface Products:

Ammonia based cleaners, soapy water or commercially available solid surface cleaners can remove most dirt and residue. Stubborn residue will require a little stronger cleaner. Some colors may appear to require more frequent cleaning to maintain a uniform finish. Darker colors tend to require more attention than lighter colors.

Over time, through care and use, your countertop will acquire a patina, changing the appearance of the finish.

Natural Granite and Infinity Quartz Products:

When used weekly, Gel Gloss® Granite & Natural Stone Cleaner not only cleans and shines the surface; it also provides many of the benefits of a sealer. It fills the pores in the surface so that stains will not penetrate. Consistent weekly use will aid in prolonging the life of the original sealer.

More frequent use may be required if countertop has an unusually high rate of activity or has had frequent use of cleaning chemicals. Normal care and prevention steps like wiping up spills should always be taken.

Natural Granite tops are sealed at the time of manufacturing. Natural Quartz does NOT require being sealed.

Helpful Care and Cleaning Tips

- ALWAYS after use, wipe away any water left lying on the deck. Even water can leave behind mineral deposits if not dried up.
- ALWAYS place protective pads on the bottoms of any heavy objects such as pottery, appliances, or other objects that may scratch the vanity tops surface.
- NEVER use abrasive cleaners, tub and tile cleaner, toilet cleaner, or rough cleaning pads. If necessary, a soft buffing pad can be used. These types of cleaners can etch or dull surfaces.
- NEVER stand on the vanity top to fix overhead lighting or other items. This can lead to product damage or personal injury.