

**Model #DV-1K515**

**Overall Dimension: 24" (L) x 18 11/16" (W) x 11 3/16" (D)**

**Features:**

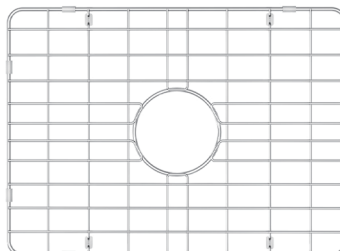
- This DeerValley sink comes in the perfect size for small kitchens or laundry / utility rooms.
- This sink can be installed either under-mount or top-mount.
- Constructed from fireclay material for long-lasting durability with resistance to dents and damage.
- Ultra-smooth non-porous surface and tightly rounded corners help reduce build-up over time for a cleaner kitchen with minimal maintenance.
- Extreme resistance to chip, discoloration, scratching and cracking.
- Sink can accommodate a 3 1/2" garbage disposal.



**Package Included:**



● Fireclay Kitchen Sink(DV-1K515)

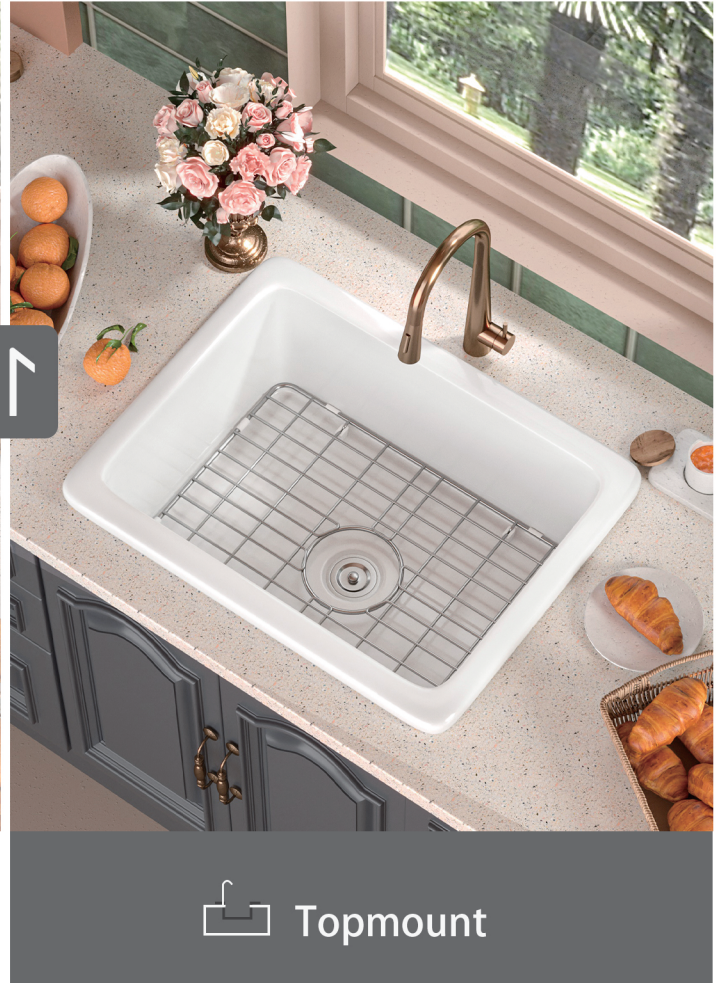


● Sink Grid(DV-1K515G15)



● Basket Strainer(DV-1D905)

## Two Types of Installation Methods:

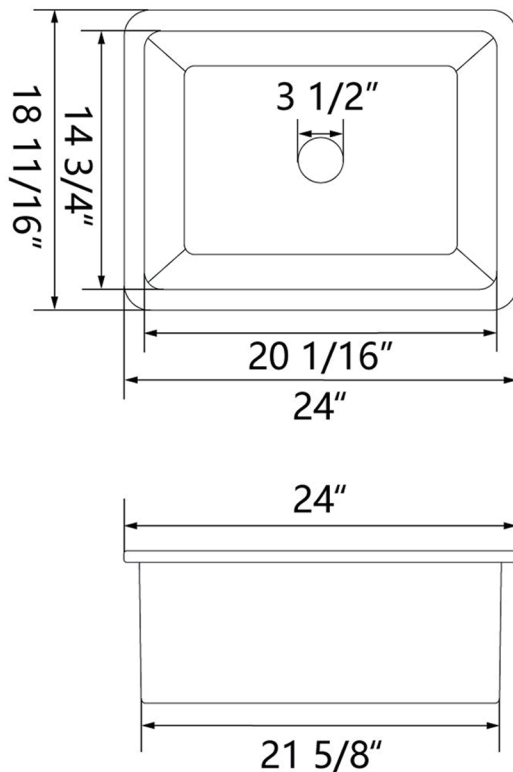


## About DeerValley

At DeerValley, we provide high-quality sanitary products for bathroom and kitchen use. We always bring innovative designs and products to your home. DeerValley has always had the most stringent requirements for our products. We ensure that each product is tested thousands of times in order to provide a good product experience and a better lifestyle.

## Technical Specifications:

- + Outer: 24" (L) x 18 11/16" (W) x 11 3/16" (D)
- + Inter: 20 1/16" (L) x 14 3/4" (W) x 10 1/4" (D)
- + Weight: 58.64 lbs
- + Drain: 3 1/2" diameter



#DV-1K515

Sinks are individually handcrafted, so sizes may vary slightly.

## 1 Year Warranty

All DeerValley kitchen sinks come with our Warranty within one year from the delivery date.



TEL: +1 312-626-9466 | [service@deervalleybath.com](mailto:service@deervalleybath.com)