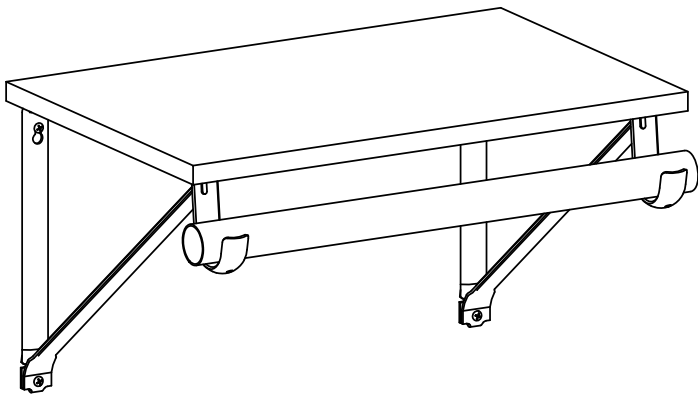
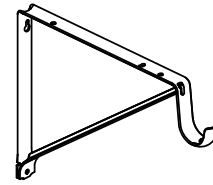


How to install standard pole and shelf bracket



A



Fasteners(sale separately): Use For Board or Drywall Stud

AA

P/H Screw #8x1-1/4"

Fasteners(sale separately): Use For Brick wall

BB

P/H Screw #8x1-1/2"

CC

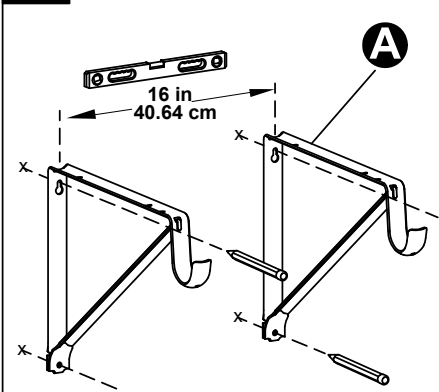
Anchor, M6x30mm

Fasteners(sale separately): Use For Shelf

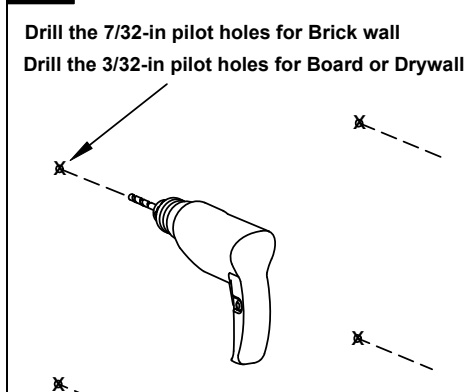
DD

P/H Screw #8x3/4"

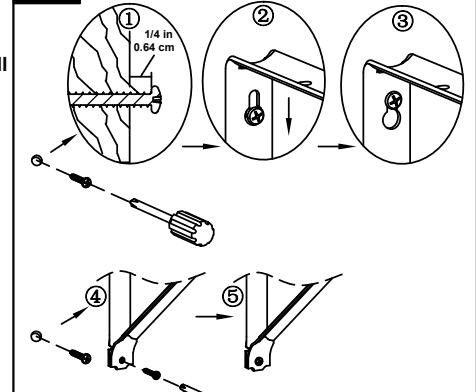
1-1



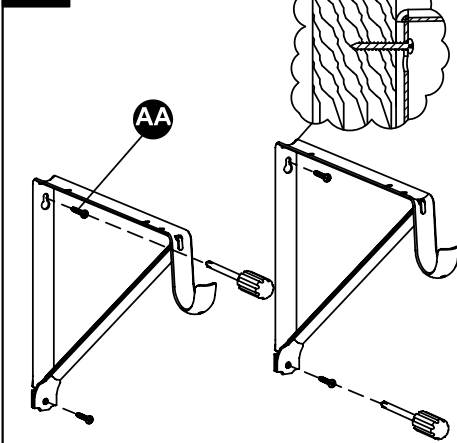
1-2



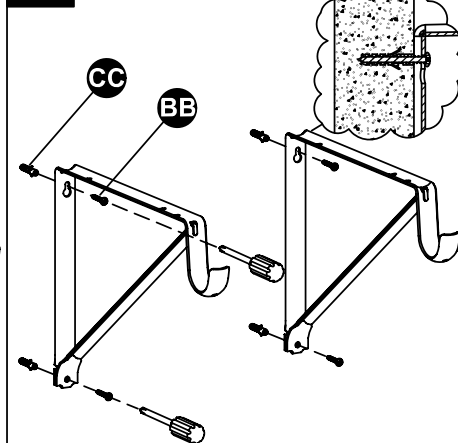
1-3



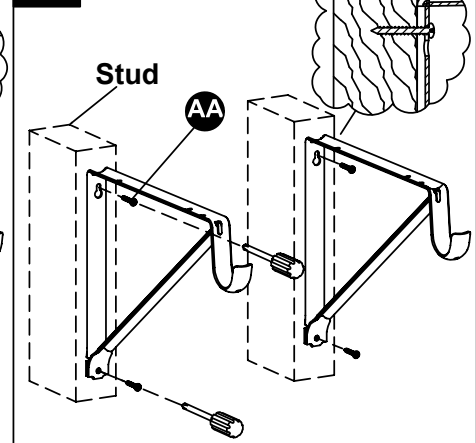
2-1 For Board



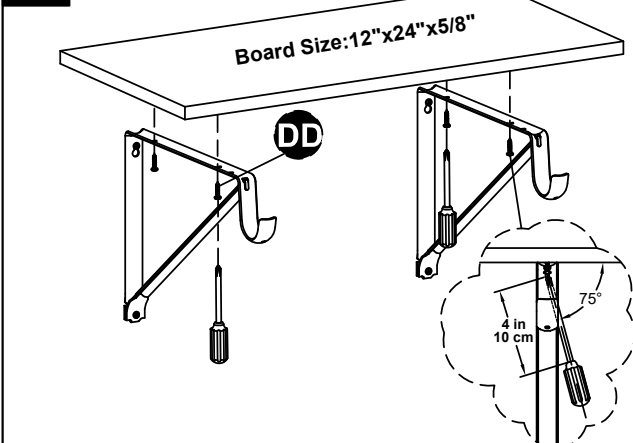
2-2 For Brick or Concrete Wall



2-3 For Drywall



3-1



3-2

