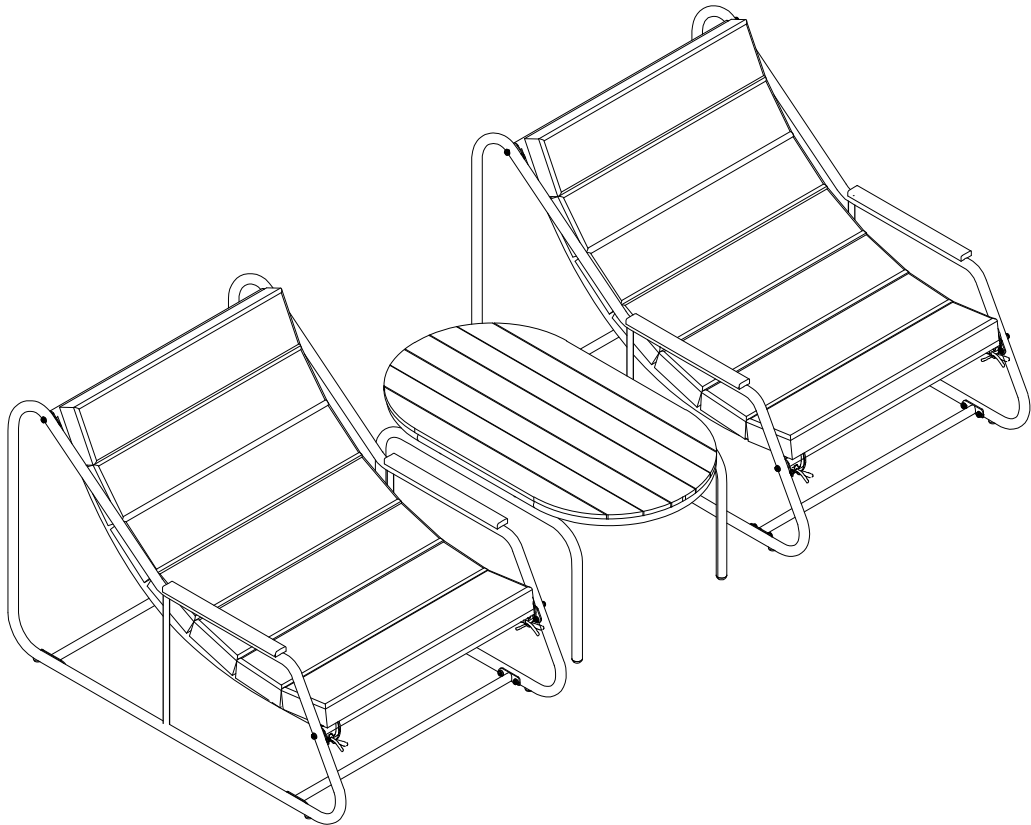


# ASSEMBLY INSTRUCTION

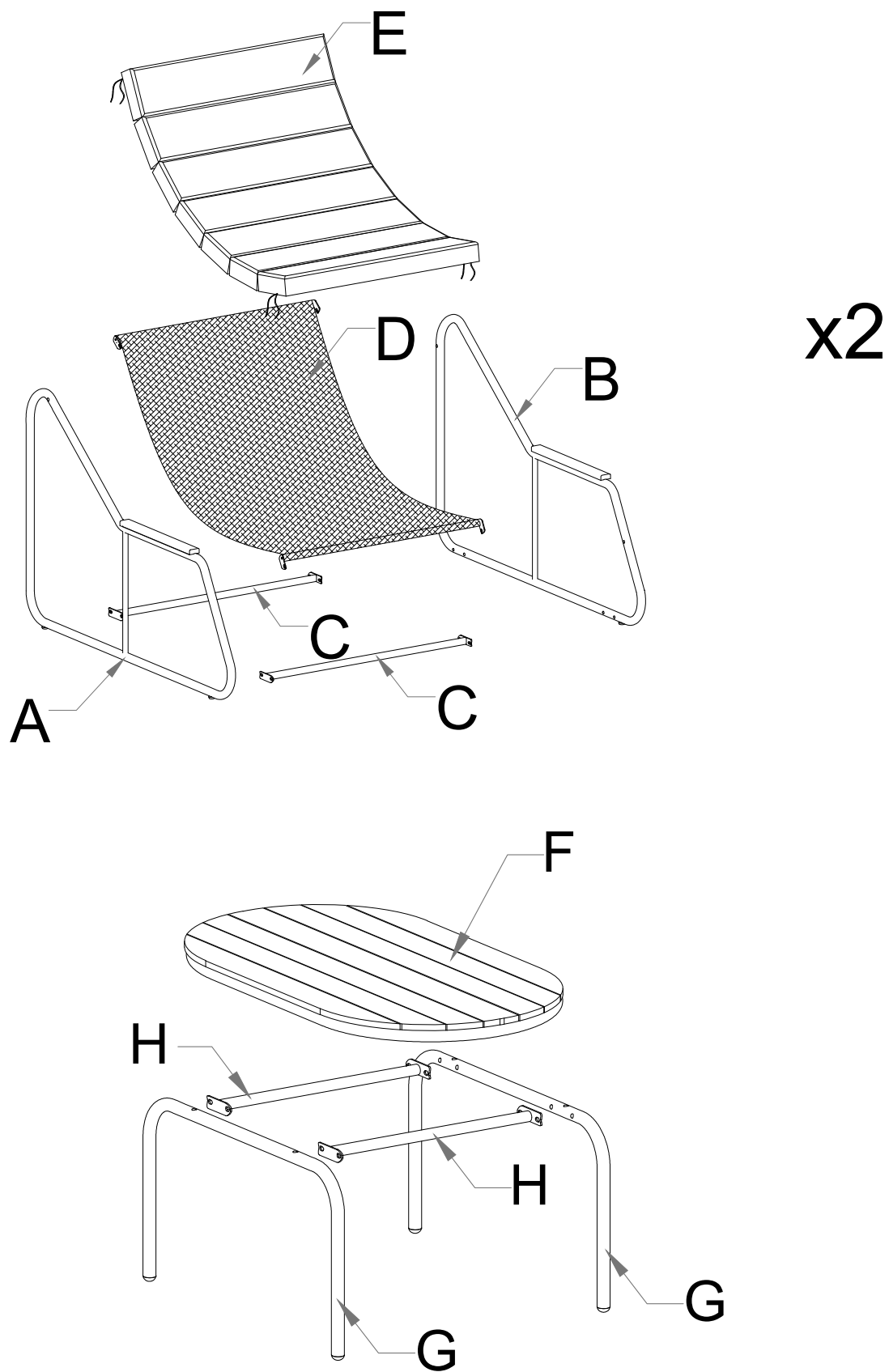


## N715P237243

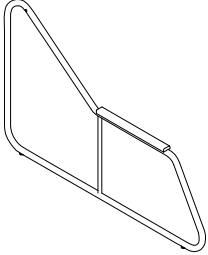
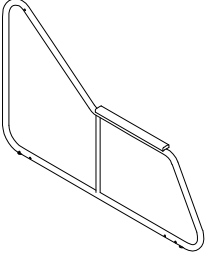
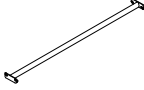
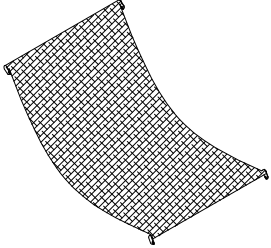
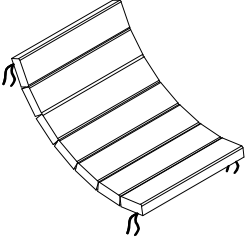
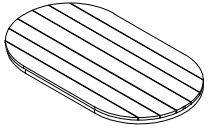
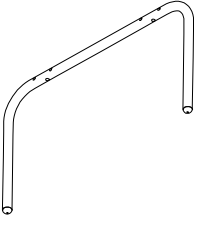
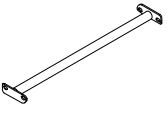
**Please read all instructions carefully:**

- 1. Have 2 adults on hand for assembly.**
- 2. 50% Tighten before fixing all screws, Allen wrench is recommended instead of an electric drill.**
- 3. Place the item on a flat ground to adjust and make sure it remains stable.**
- 4. Tighten up all screws with tools gradually.**
- 5. If the screws are not aligned with holes during assembly, please loosen all the other screws to 50% and continue the assembly process.**
- 6. If the item is not stable, please loosen all the screws, adjust it on a flat ground and tighten up all screws again.**
- 7. Note : If one or some screws are fully tightened during assembly, chances are the others will not be aligned with holes. In addition, all the holes are designed to be relatively larger to provide more space for the adjustment of the screws.**

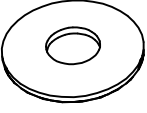
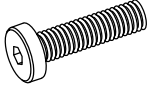
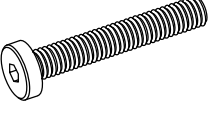
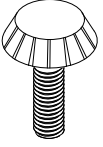
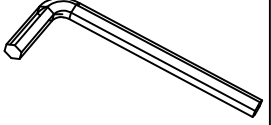
# Exploded View



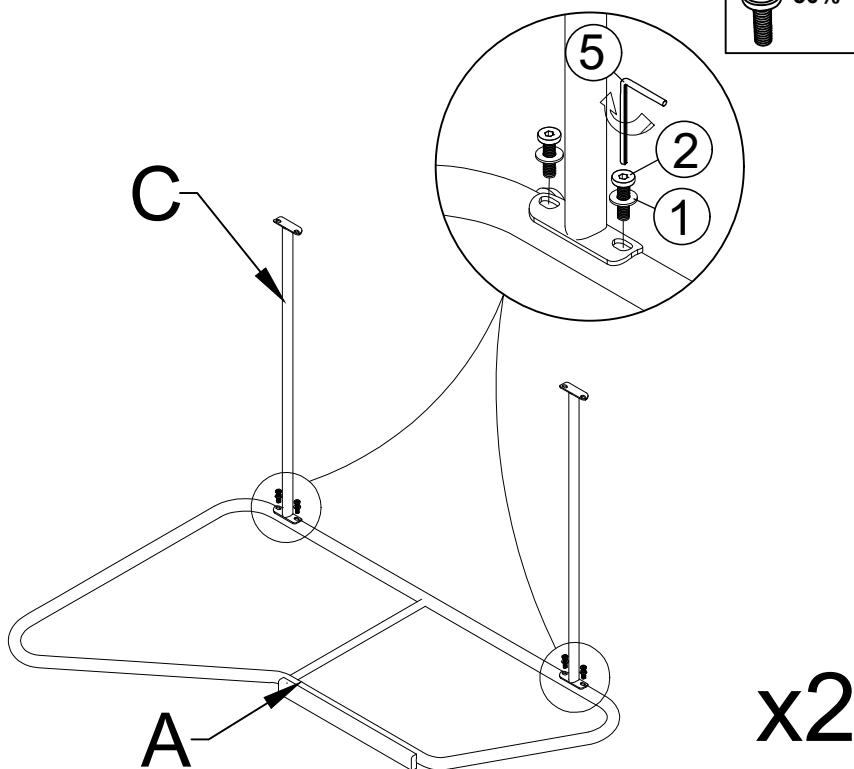
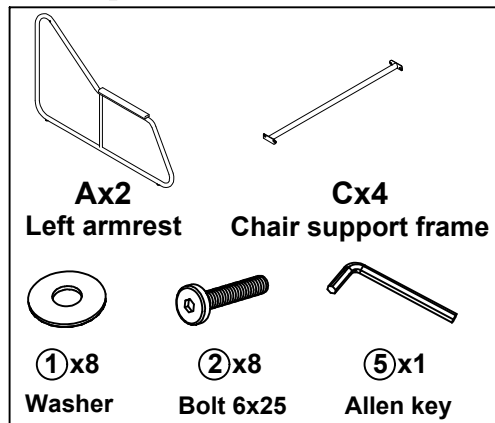
# PART LIST

 <p><b>Ax2</b> Left armrest</p>	 <p><b>Bx2</b> Right armrest</p>	 <p><b>Cx4</b> Chair support frame</p>
 <p><b>Dx2</b> Seat chair frame</p>	 <p><b>Ex2</b> Seat Cushion</p>	 <p><b>Fx1</b> Table top</p>
 <p><b>Gx2</b> Table leg</p>	 <p><b>Hx2</b> Table support frame</p>	

# HARDWARE LIST

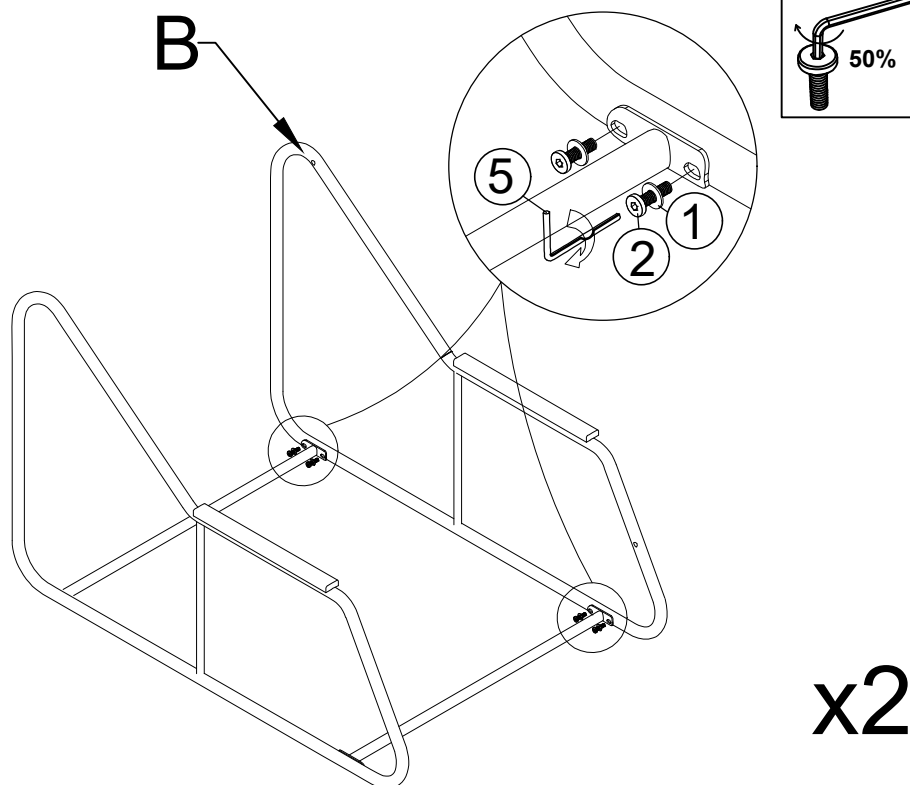
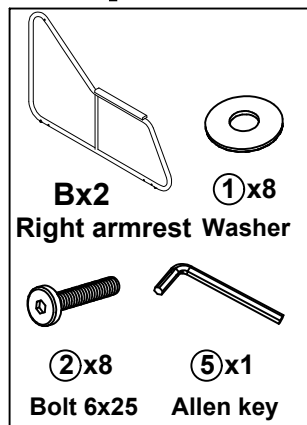
 <p><b>1- Washer: 44pcs</b> Extra : 2 pcs</p>	 <p><b>2-Bolt 6x25: 32pcs</b> Extra : 2 pcs</p>	 <p><b>3-Bolt 6x45: 12pcs</b> Extra : 1 pc</p>	 <p><b>4- Leveler foot: 8pcs</b></p>	 <p><b>5- Allen key: 2pcs</b></p>
--	--	---	---	--

## Step 1



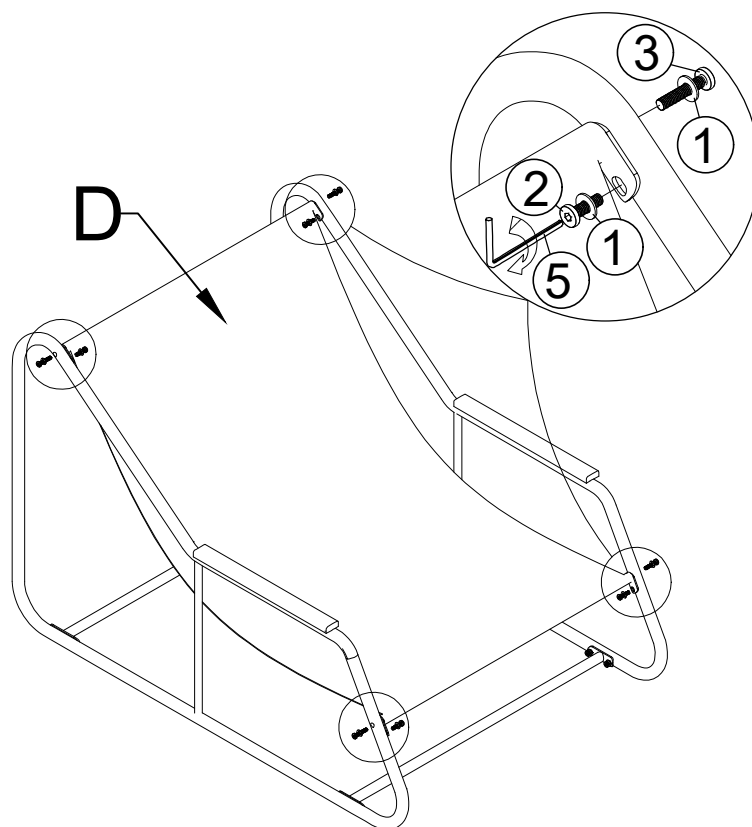
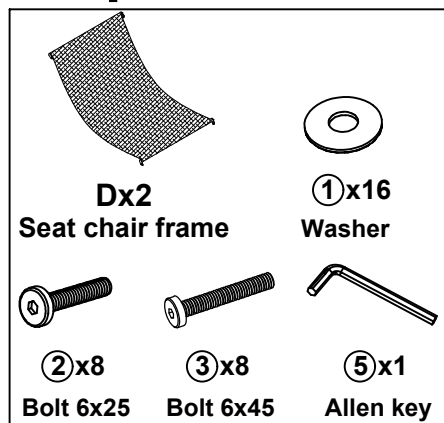
Connect The Left armrest (A) & Chair support frame (C), tighten Bolt (2), Flat Washer (1) With Allen key (5)

## Step 2



Connect The part from Step (1) & Right armrest (B), tighten Bolt (2), Flat Washer (1) With Allen key (5)

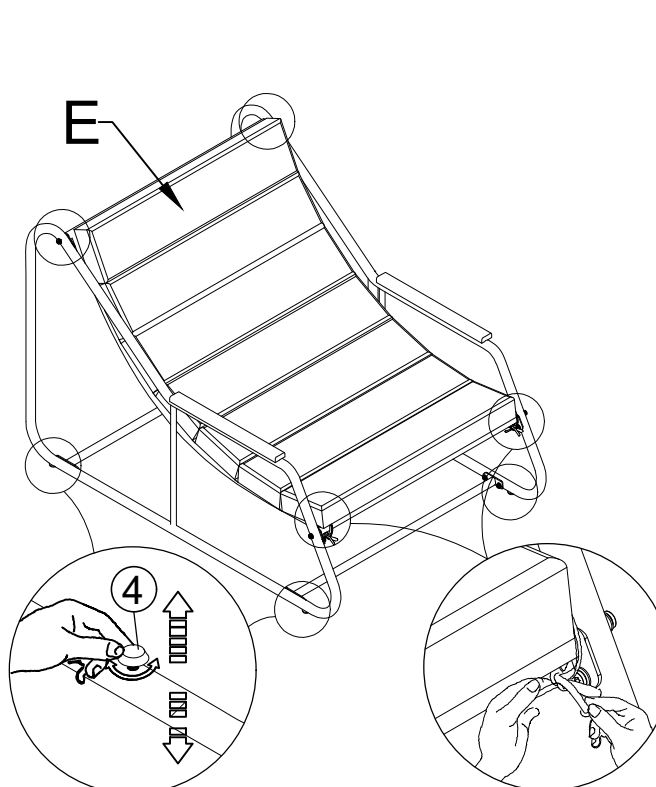
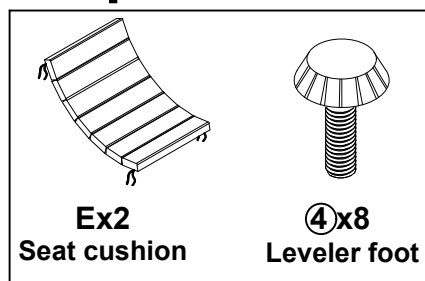
## Step 3



x2

Connect The part from Step (2) & Seat chair frame (D), tighten Bolt (2), tighten Bolt (3) Flat Washer (1) With Allen key (5)

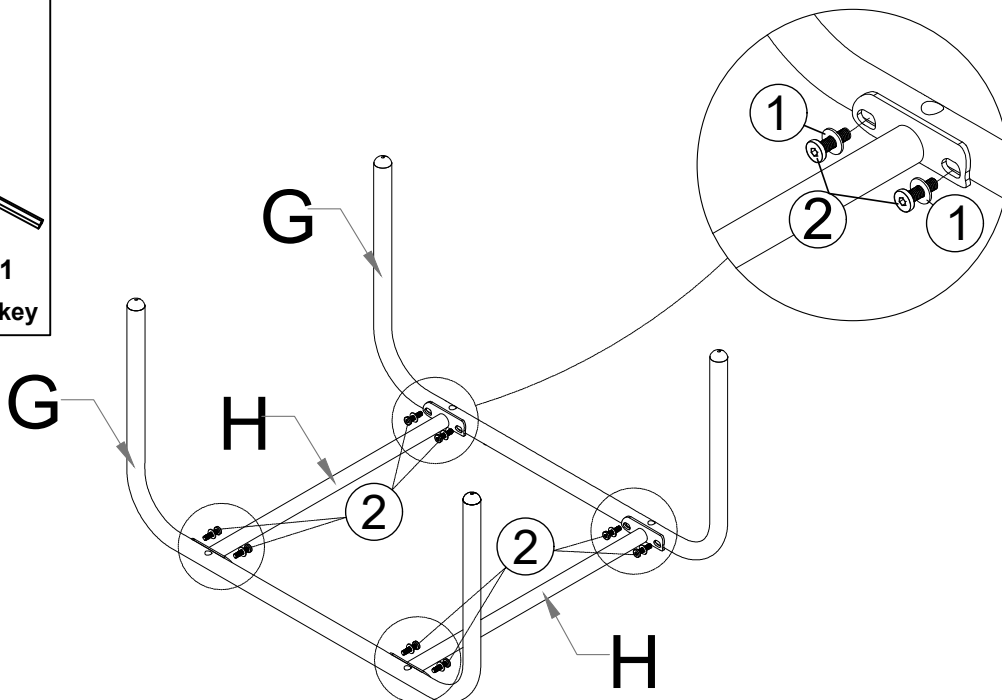
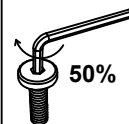
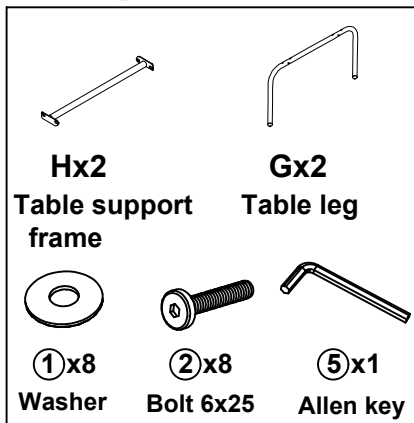
## Step 4



x2

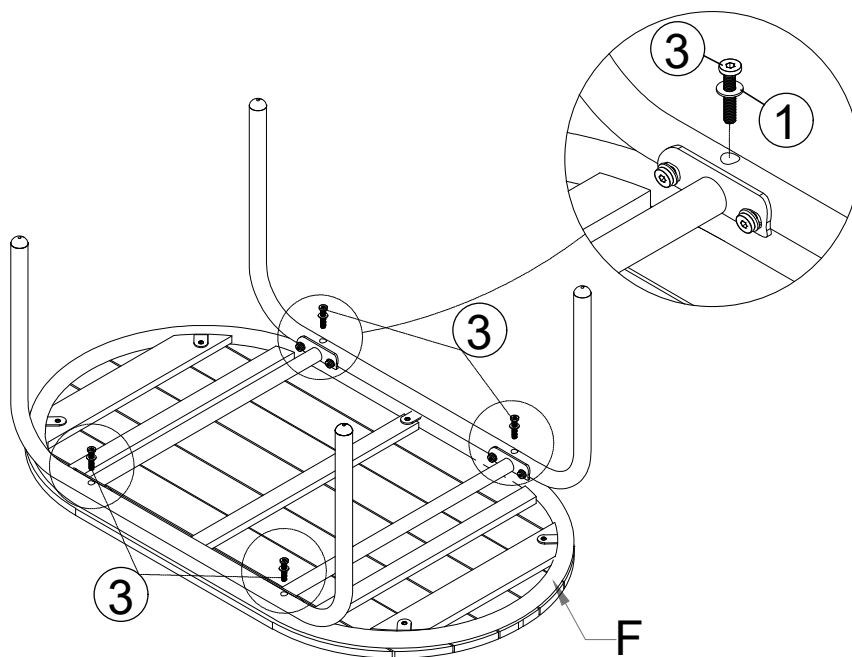
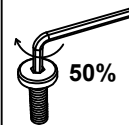
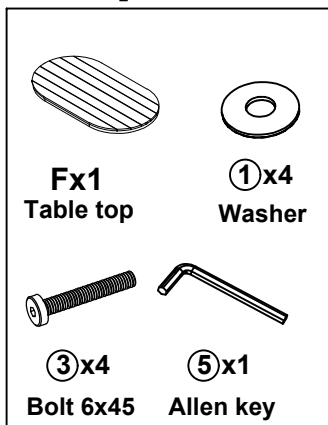
Tighten Leveler foot (4), Put seat cushion (E) on the chair to finish chair

## Step 5



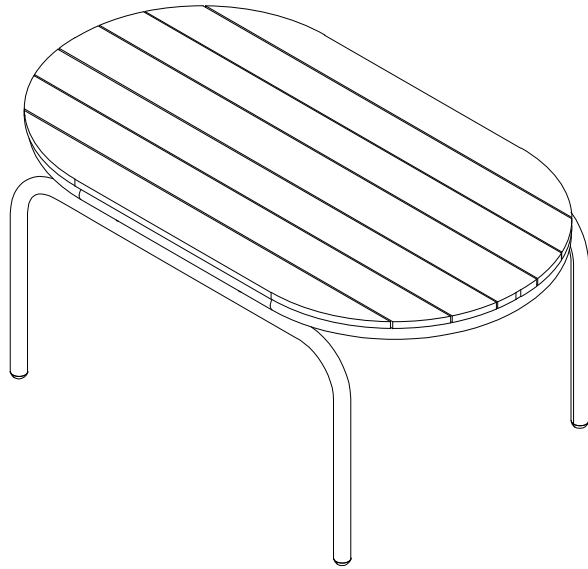
**Connect The Table support frame (H) & Table leg (G), tighten Bolt (2), Flat Washer (1) With Allen key (5)**

## Step 6



**Connect The part from Step (5) & Table top (F), tighten Bolt (3), Flat Washer (1) With Allen key (5)**

## Step 7



**Finish table**



**Finish**