



Greek®

4' Bath

K-1490-X



Features

- End drain.
- Integral lumbar support and armrests for comfort.
- Repose vinyl bath pillow for added comfort.
- 48" (1219 mm) x 32" (813 mm) x 23-3/8" (594 mm)

Material

- Acrylic

Installation

- Drop-in.

Recommended Accessories

K-1179 Vinyl Tiling-in Bead
K-1491 Bath/Whirlpool Pillow
K-1601 Bath/Whirlpool Footstop
K-24916 Wireless Music Kit
K-7213 27" Cable Bath Drain
K-7214 27" Cable Bath Drain
K-7265 Clearflo Bath Drain
K-164 Under-Mount Install Kit K-1490-X/1492-H2



Codes/Standards

CSA B45.5/IAPMO Z124
ASTM E162
ASTM E662
Greenguard UL 2818 - Gold






KOHLER® One-Year Limited Warranty

See website for detailed warranty information.

Available Color/Finishes

Color tiles intended for reference only.

Color	Code	Description
-------	------	-------------

	0	White
	96	Biscuit
	47	Almond
	NY	Dune
	G9	Sandbar

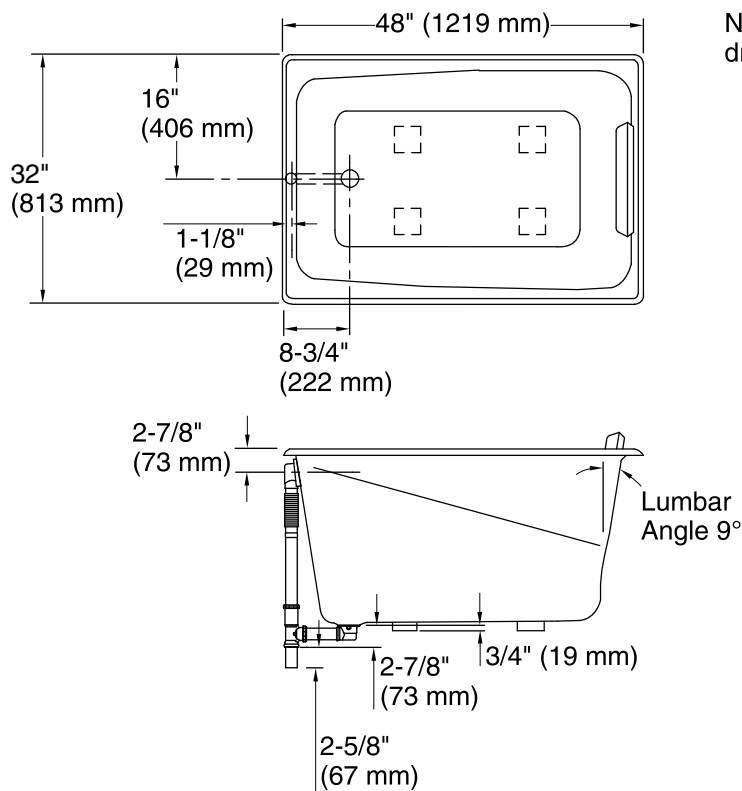
USA/Canada: 1-800-4KOHLER (1-800-456-4537)

Kohler Co. reserves the right to make revisions without notice to product specifications.

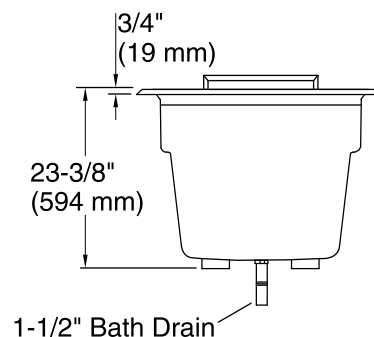
For the most current Specification Sheet, go to www.kohler.com.

2-12-2018 03:22

THE BOLD LOOK
OF **KOHLER**®



No change in measurement if connected with drain illustrated. (K-7265)



Technical Information

All product dimensions are nominal.

Installation:	Drop-in
Drain location:	End
Basin area, bottom:	36" x 21" (914 mm x 533 mm)
Basin area, top:	42" x 26" (1067 mm x 660 mm)
Weight:	60 lbs (27.2 kg)
Minimum floor load:	61 lbs/ft ² (297.8 kg/m ²)
Water depth:	17-7/8" (454 mm)
Water capacity:	68 gal (257.4 L)
Cutout:	Drop-in, 46-1/2" x 30-1/2" (1181 mm x 775 mm)

Notes

Measure your actual product for rough-in details.

Install this product according to the installation instructions.

The hot water supply should be 70% of the capacity of the bath or greater. Installations will vary.

Kit is required for under-mount installations (sold separately).