

## Unlimited 60

### Features

- Bathroom Sink
- Made of Ceramic
- Available in 2 Finishes: Glossy White and Matte Black
- With Overflow
- Wall Mount or Countertop (Vessel) Installation
- Available with One, Three (4" or 8" Spread), or No Faucet Hole
- Available with Soap Dispenser Hole Option to the Left or Right of Faucet Hole
- Made in Italy



### Related Items:

- WSBC 53991 | Push Waste Drain
- WSBC 53922 | Decorative Trap

### Finishes:

-  Glossy White
-  Matte Black


### SKU# | Options:

- Unlimited 60.00 WG | No Faucet Hole, Glossy White
- Unlimited 60.01 WG | Single Faucet Hole, Glossy White
- Unlimited 60.03-4 WG | Three Faucet Hole 4" Spread, Glossy White
- Unlimited 60.03-8 WG | Three Faucet Hole 8" Spread, Glossy White
- Unlimited 60.02L WG | Soap Dispenser Hole (Left), Glossy White
- Unlimited 60.02R WG | Soap Dispenser Hole (Right), Glossy White
- Unlimited 60.00 BM | No Faucet Hole, Matte Black
- Unlimited 60.01 BM | Single Faucet Hole, Matte Black
- Unlimited 60.03-4 BM | Three Faucet Hole 4" Spread, Matte Black
- Unlimited 60.03-8 BM | Three Faucet Hole 8" Spread, Matte Black
- Unlimited 60.02L BM | Soap Dispenser Hole (Left), Matte Black
- Unlimited 60.02R BM | Soap Dispenser Hole (Right), Matte Black

### Codes & Standards:

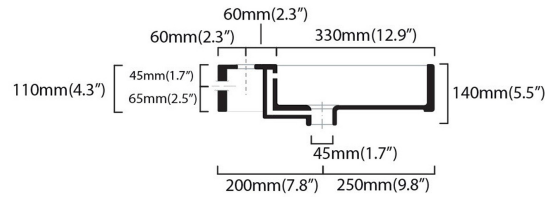
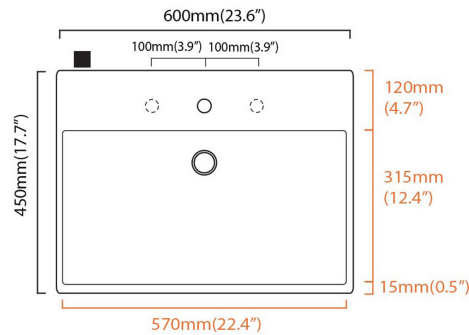
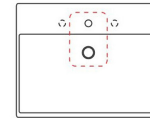
- ADA Compliant

\* WS Bath Collections reserves the right to revise dimensions or information on this sheet without notice

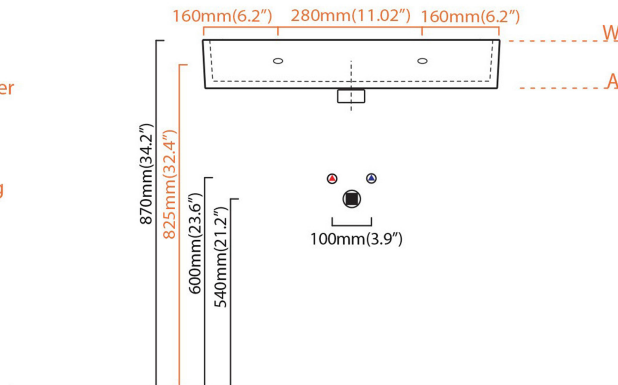
<b>Collection  </b> Unlimited	<b>Model  </b> Unlimited 60	Dimensions Metric <i>1 inch = 2.54 cm</i> <i>1 inch = 25.4 mm</i>	 1051 Lea Drive - Collegeville, PA 19426 Tel. 215 513 9400 - Fax 610 831 0215 <a href="http://www.ws bathcollections.com">www.ws bathcollections.com</a> - <a href="mailto:info@ws bathcollectiCns.com">info@ws bathcollectiCns.com</a>
----------------------------------	--------------------------------	---	---

- = smaltato perimetralmente  
all glazed sides
- = non smaltato dietro  
unglazed behind

richiedi dima dwg  
template request dwg



- U= sottopiano  
undercounter
- I= incasso  
inset
- A= appoggio  
freestanding
- W= sospeso  
wall hung



**Collection |**  
Unlimited

**Model |**  
Unlimited 60

**Dimensions Metric**

1 inch = 2.54 cm  
1 inch = 25.4 mm

**WS<sup>®</sup>**  
**BATH**  
**COLLECTIONS**

1051 Lea Drive - Collegeville, PA 19426  
Tel. 215 513 9400 - Fax 610 831 0215

[www.ws bathcollections.com](http://www.ws bathcollections.com) - [info@ws bathcollections.com](mailto:info@ws bathcollections.com)

We recommend the following items that work with your sink.

Unlimited 60

## TRAPS



**WSBC 53922**  
*Our best seller*

Polished Chrome  
WSBC 53922.29

Matte Black  
WSBC 53922.22



**WSBC 5392**

Polished Chrome  
WSBC 5392.29



**WSBC 53925**

Polished Chrome  
WSBC 53925.29



**WSBC 53921**  
*Space saving*

Polished Chrome  
WSBC 53921.29

Matte Black  
WSBC 53921.22

## DRAINS



**WSBC 53991**  
Push waste drain (click clack)  
*with overflow*

Polished Chrome  
WSBC 53991.29

Glossy White  
WSBC 53991.09

Glossy Black  
WSBC 53991.18

Matte White  
WSBC 53991.26

Matte Black  
WSBC 53991.22

## MOUNTING HARDWARE

### Wall-mount installation

### Vessel/ countertop installation



Bolts



Silicone (optional)

Collection  
Unlimited

Model |  
Unlimited 60

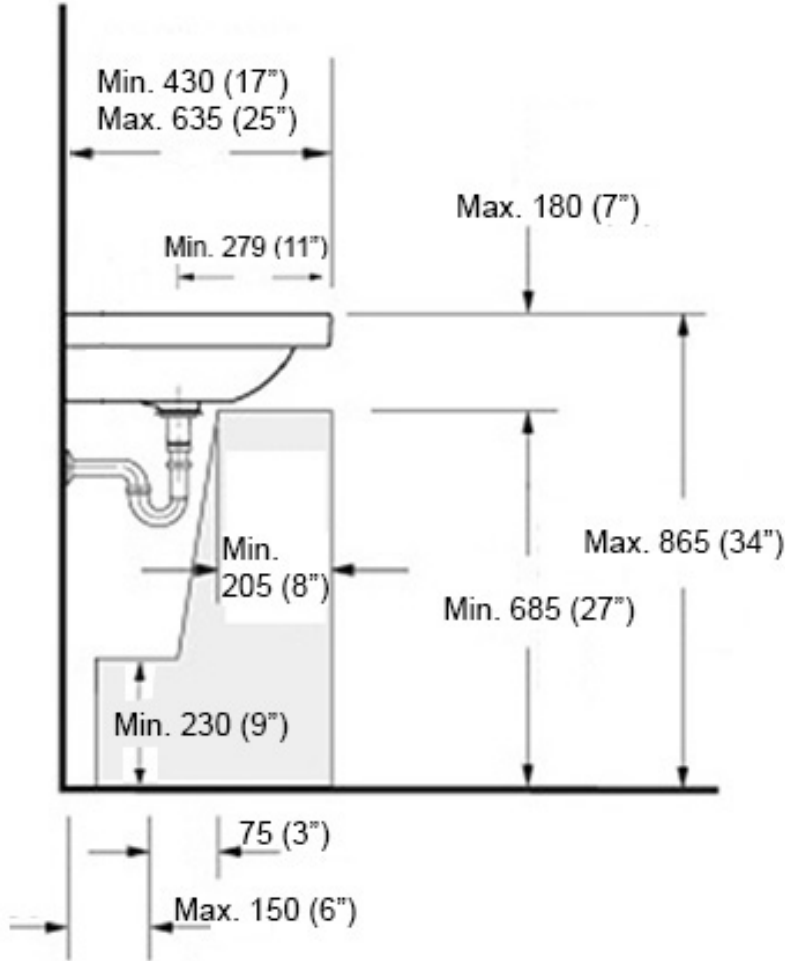
Dimensions Metric  
*1 inch = 2.54 cm*  
*1 inch = 25.4 mm*

**WS**<sup>®</sup>  
**BATH**  
**COLLECTIONS**


1051 Lea Drive - Collegeville, PA 19426  
Tel. 215 513 9400 - Fax 610 831 0215

[www.ws bathcollections.com](http://www.ws bathcollections.com) - [info@ws bathcollections.com](mailto:info@ws bathcollections.com)

**Recommended ADA Installation**



Note: ADA Compliant when installed in accordance with ADA guidelines

<p><b>Collection</b> Unlimited</p>	<p><b>Model</b>   Unlimited 60</p>	<p>Dimensions Metric 1 inch = 2.54 cm 1 inch = 25.4 mm</p>	 <p>1051 Lea Drive - Collegeville, PA 19426 Tel. 215 513 9400 - Fax 610 831 0215 <a href="http://www.ws bathcollections.com">www.ws bathcollections.com</a> - <a href="mailto:info@ws bathcollections.com">info@ws bathcollections.com</a></p>
--	--	--	---