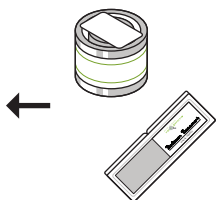


STEP 4 MAIL SAMPLES



- Insert sealed air and surface samples into the provided FedEx Express mailing envelope and mail to laboratory.

Note: Sending more than one envelope or package may cause samples to arrive separately and cause possible delays with analysis.

- ✓ FedEx Express Shipping: 2 **business** days to reach the laboratory.

FedEx Express is trackable and convenient. Call **1.800.GOFEDEx** to schedule a free FedEx pickup from your location, Monday through Friday. You can also drop off your package at any FedEx location.

MAKE THE MOST OUT OF YOUR SURFACE SAMPLES

BEST SURFACES

- Wall board (drywall)
- Wood joists
- Ceiling fan blades
- HVAC return vents
- HVAC supply vents

These provide the best surfaces to sample. Do not sample multiple surfaces with the same surface sample.

LIGHT PRESSURE

Best results are obtained by LIGHTLY pressing the tape slide on a FLAT surface, once. Ideally on a spot that appears to be a solid area of color (black, dark green, white or pastel blue/green or yellow. Do not wipe or blot with the tape slide.

CEILING FAN BLADES

Sometimes, ceiling fan blades can provide useful information. If the top of the fan blade feels sticky and is black or dark in color, consider sampling the blade. For your safety, ensure the fan is turned off prior to taking the surface sample.

AVOID

- Carpeting, rugs
- Air filters
- Non-leather furniture
- Soft goods/fabric items
- High traffic/regularly cleaned surfaces i.e. countertops, flooring

These surfaces do not sample well with the surface samples.

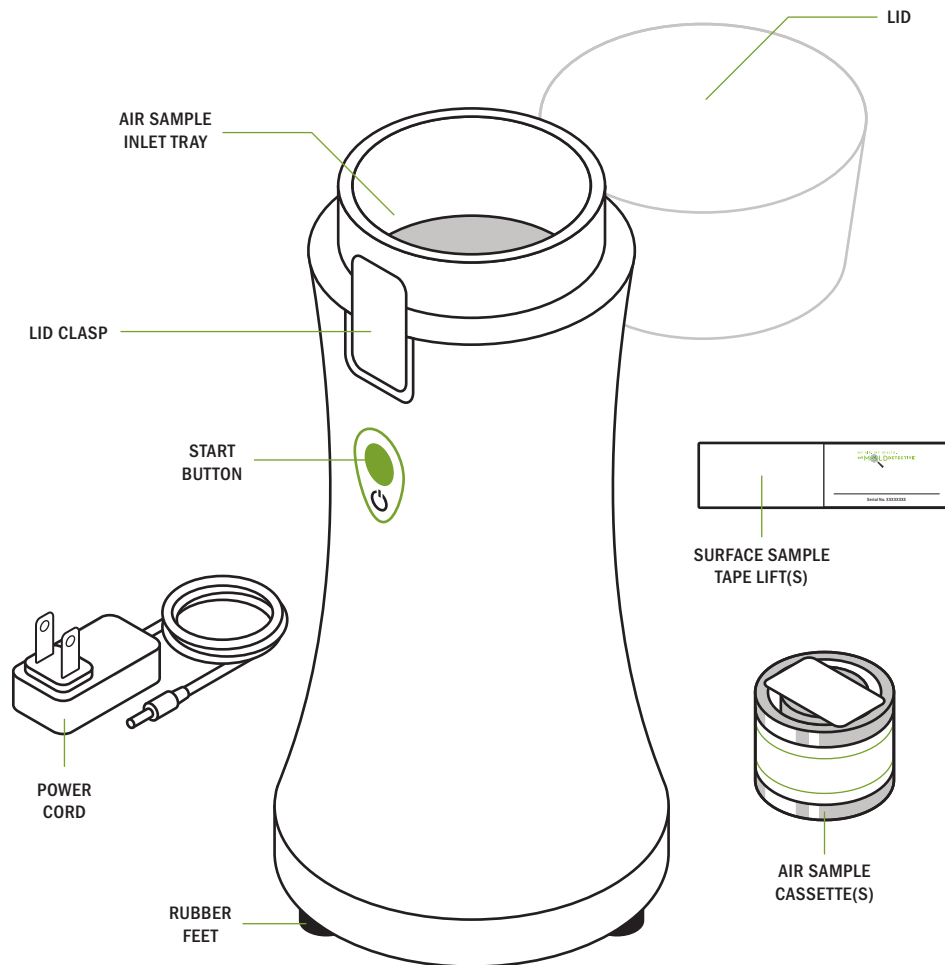
NO DUST BUNNIES

In general, testing “dust bunnies” is not recommended.

Most dust of this type contains up to 90% fibers and skin scales. Only scattered, non-indicator fungi spores will be recovered.



STEP-BY-STEP INSTRUCTIONS



Thanks you for purchasing My Mold Detective®. For best results, please read and follow instructions carefully. For the most up-to-date instructions, FAQs and videos, visit [MyMoldDetective.com](https://www.MyMoldDetective.com)

U.S. Patent | Made in China | Assembled in the U.S.A. | 1-Year Manufacturer's Limited Warranty

STEP 1 AIR SAMPLES

a



- On one air sample cassette, mark the box labeled “Outside.”

*Note: This will be your **REQUIRED** control sample. Your control sample is used to inform the lab of the conditions affecting all other samples. It is critical, that all other samples be collected immediately after the control sample. Any additional samples submitted at a later date, will require a new control sample.*

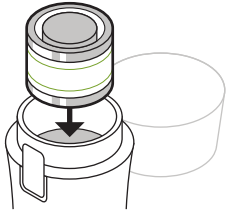
b



- Remove tape flaps from **top** and **bottom** of the air sample cassette.

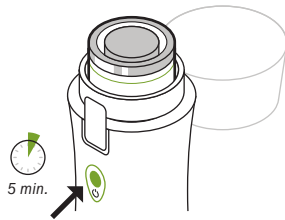
Note: Save flaps for resealing cassettes.

c



- Open the pump lid. (This will remain open during testing.)
- Press air sample cassette firmly into the air sample inlet tray.

d



- Ensure you have a power outlet to plug in to. You may need an extension cord.
- Note: Take sample when it's not raining or snowing, in an open area 10 ft. away from any structures and overhangs, 3 to 5 ft. off the ground. (i.e. Use a chair to set the pump on.)*
- Press the green button to start unit. The button will illuminate during testing.
- The pump will shut off automatically after sample is complete.

e



- After air sampling is complete, reseal top and bottom of air cassette with tape flaps.
- Repeat steps as needed, marking cassette(s) with room names.

Note: Indoor air sampling should be performed immediately after outdoor sampling.

RECOMMENDED STEP (OPTIONAL)

For a more customized and documented report, take digital photos of your sampling locations in action. Then, upload your photos to your online report during the registration process.



STEP 2 SURFACE SAMPLES

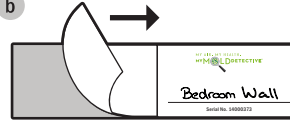
a



- Write the surface location name on the surface sample adhesive strip.

Note: The serial number is required during the online registration process.

b



- Peel off clear protective liner to expose adhesive.

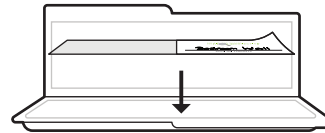
c



- Place strip with the adhesive side down on the surface to be sampled.
- Gently press down to ensure contact is made.
- Carefully remove strip from surface.

Note: Strips are for single use only. Once strip is removed from surface, do not reapply to any surface.

d



- Insert strip into plastic case provided. **Do not replace protective liner.**
- Ensure the plastic case is securely sealed before mailing.

STEP 3 REGISTER & PAY ONLINE



- ✓ **IMPORTANT** Before mailing samples, visit MyMoldDetective.com to register your samples.
- ✓ Click the “Register Samples” button at the top of the homepage and follow instructions.
- ✓ Complete payment for the lab analysis and note your confirmation number.

STEP 4 →