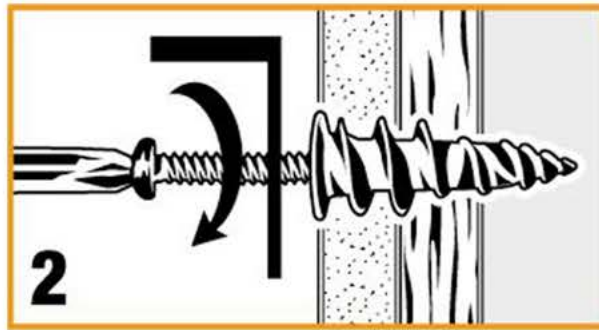
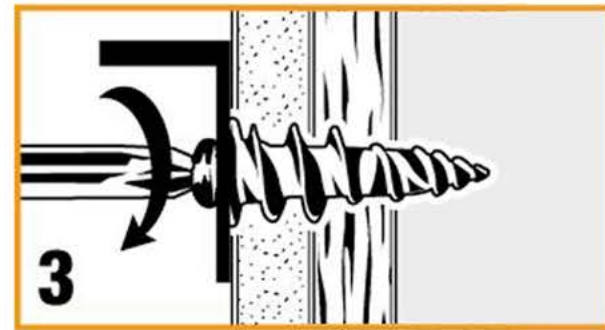


Using #2 Phillips screwdriver press anchor tip slightly into drywall or firmly into hollow door. Applying pressure, turn anchor. If wood stud is hit, increase pressure. Continue turning anchor until flush. Do not overtighten.



Insert screw through item to be hung and turn into anchor.



Continue tightening until flush. Item thickness 3/4" or less with screw provided.