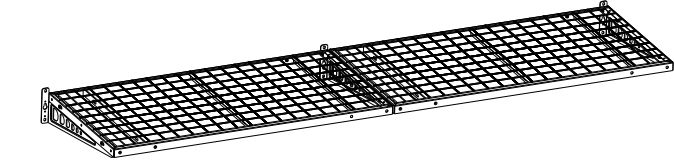
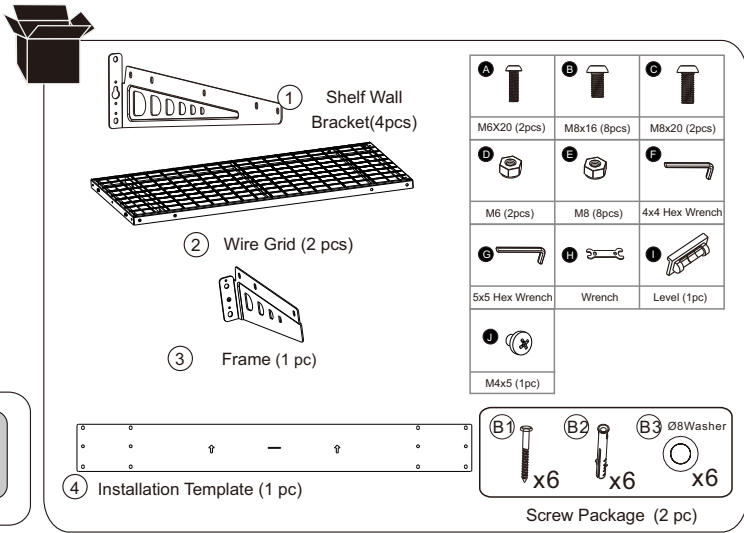
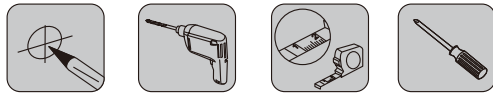


Item No. GR105
Installation Guide



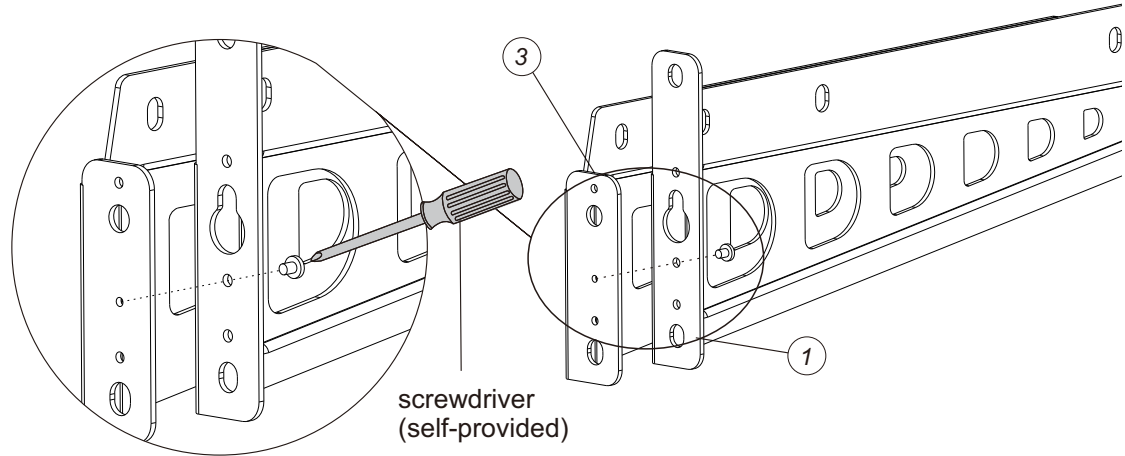
Per shelf



STEP 1

Assemble reinforced wall panels

Tighten the part3 and 1 with screw (J)

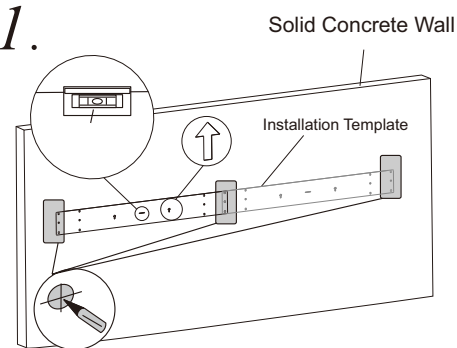


STEP 2-A

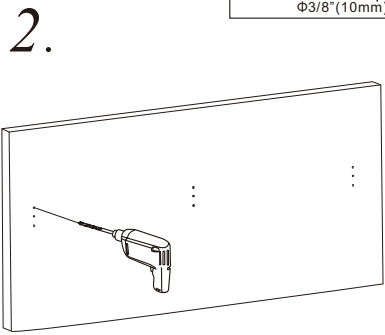
Attach the shelf wall bracket to solid concrete wall

1.Parallel Installation

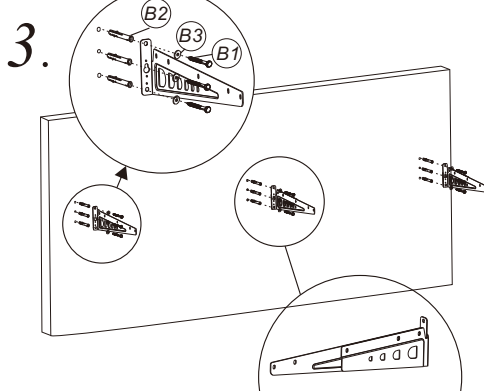
Please select the appropriate height according to the actual use.



Attention! There is only one mounting board, please use continuous line drawing points for easy use.

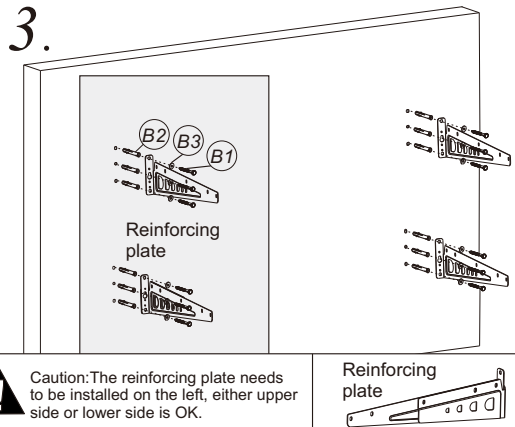
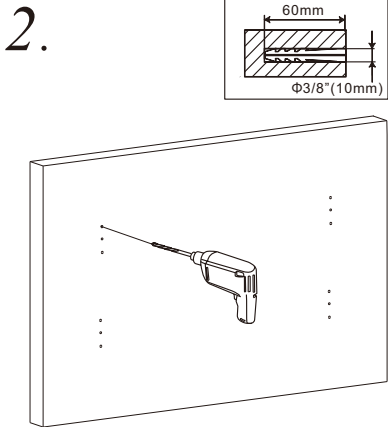
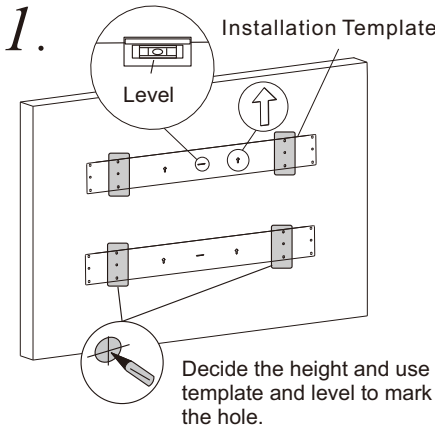


Caution: Make sure that the shelf brackets are completely fixed on the wall without gaps to prevent property damage or personal injury.



Caution: Please use the reinforcing plate as the middle wall bracket.

2.Vertical Installation



Caution: The reinforcing plate needs to be installed on the left, either upper side or lower side is OK.

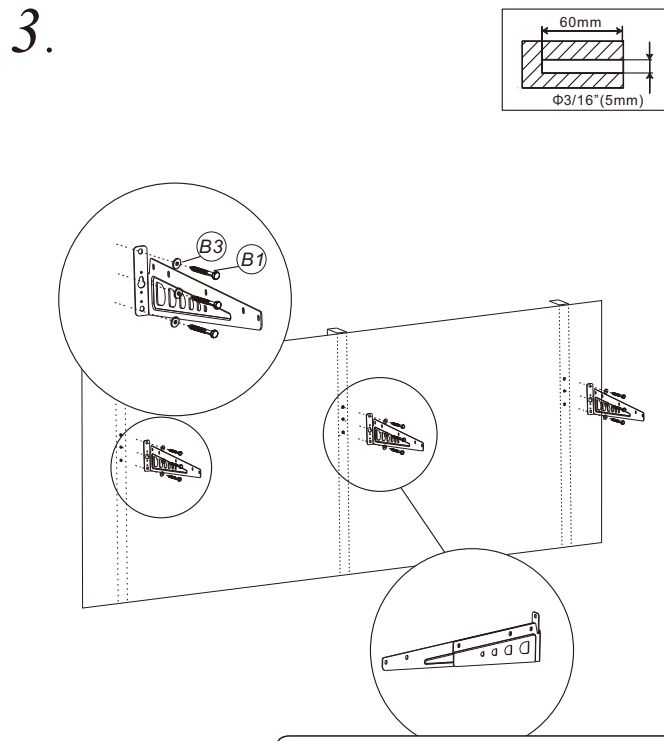
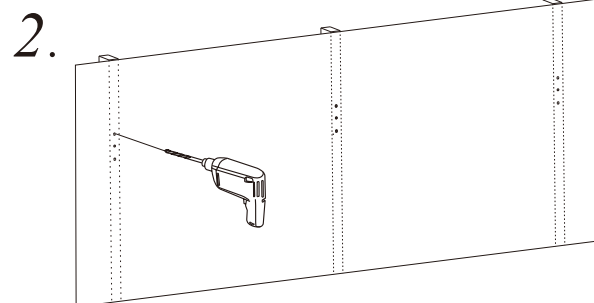
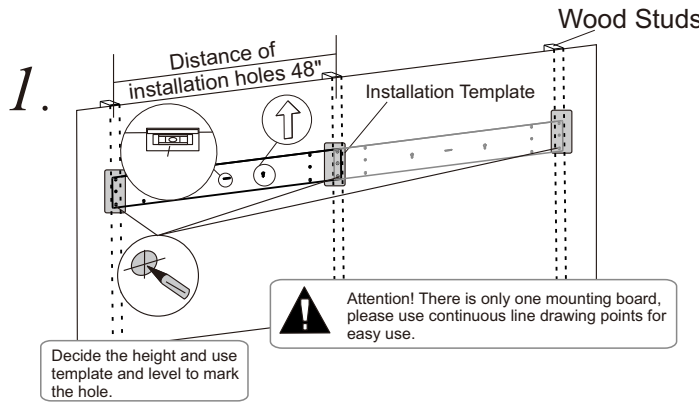
Reinforcing plate

STEP 2-B

Attach the shelf wall bracket to wood studs

1.Parallel Installation

Suitable for stud distance of 16"or 24"



Caution: Please install the reinforcing plate here as the middle wall bracket.

Select the outer or inner hole of the installation template according to the distance between the wood studs.

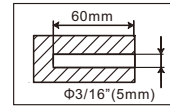
1.

Distance of installation holes 36"

Distance of
installation holes 48"

Suitable for stud distance of 16" or 24"

2.



3.

Reinforcing plate

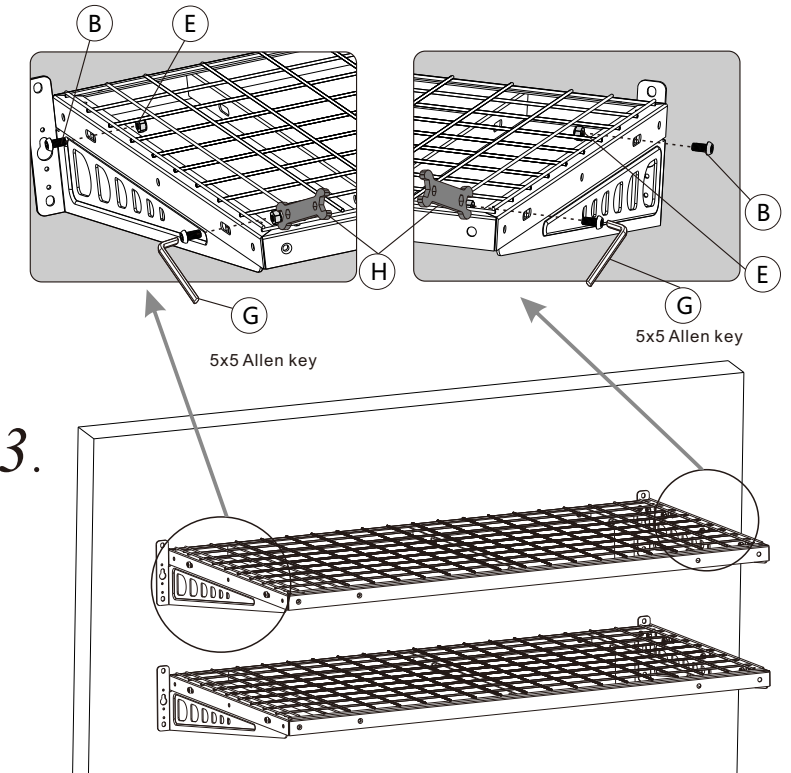
Caution: The reinforcing plate needs to be installed on the left, either upper side or lower side is OK.





Reinforcing plate

1.

2.

3



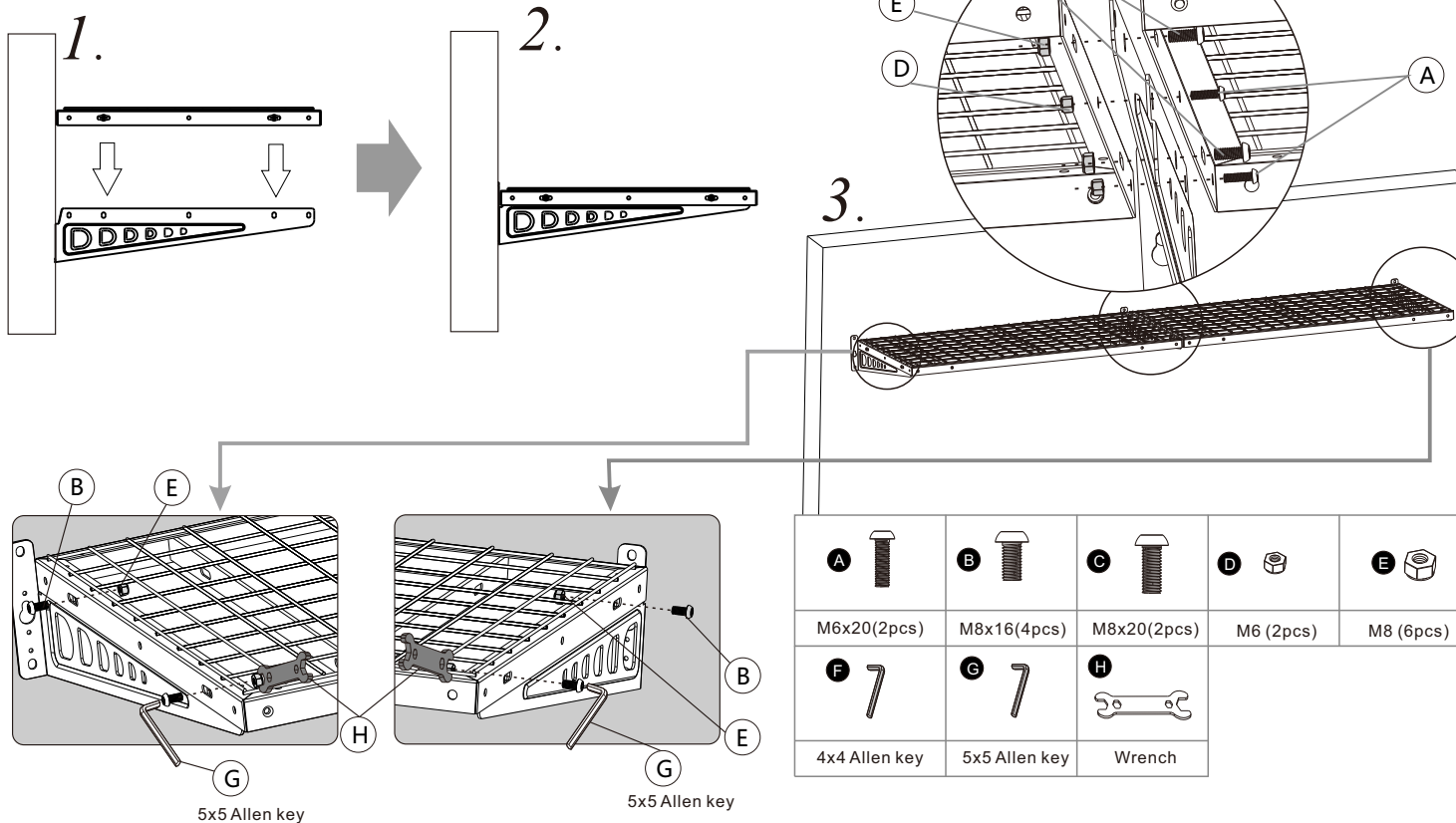
B 	E 	G 	H 
M8x16(8pcs)	M8 (8pcs)	5x5 Allen key	Wrench

Installation of wire grids

1.

2.

3.



Caution



This product contains small items that could be a choking hazard if swallowed. Keep these items away from young children.

- Make sure these instructions are read and completely understood before attempting installation. If you are unsure of any part of this installation, please contact a professional installer for assistance.
- The ceiling must be capable of supporting the combined weight of the garage rack and your stuff. Otherwise, the structure and weight capacity of the ceiling must be reinforced.
- Proper tools must be used. A minimum of two people are required for this installation. Failure to install properly can result in property damage or serious injury.
- Check joint parts every two months, making sure the screws have not loosened.
- This product is designed to be installed on a wooden ceiling or solid concrete ceiling. Before installation, make sure that the weight capacity of the ceiling will support the combined load of the rack and your stuff. Never exceed the maximum load capacity of the product 220 lbs (100kg), or else it may result in product damage or physical injury.

Note: This product is intended for indoor use only. Use of this product outdoors could lead to product damage or physical injury.