

## **INSTALLATION INSTRUCTIONS**

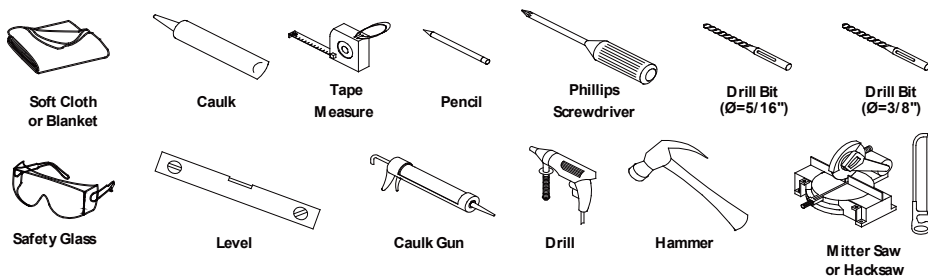
**SHOWER DOORS • TUB DOORS**

**MODEL:  
PF-75-NLS-8MM**

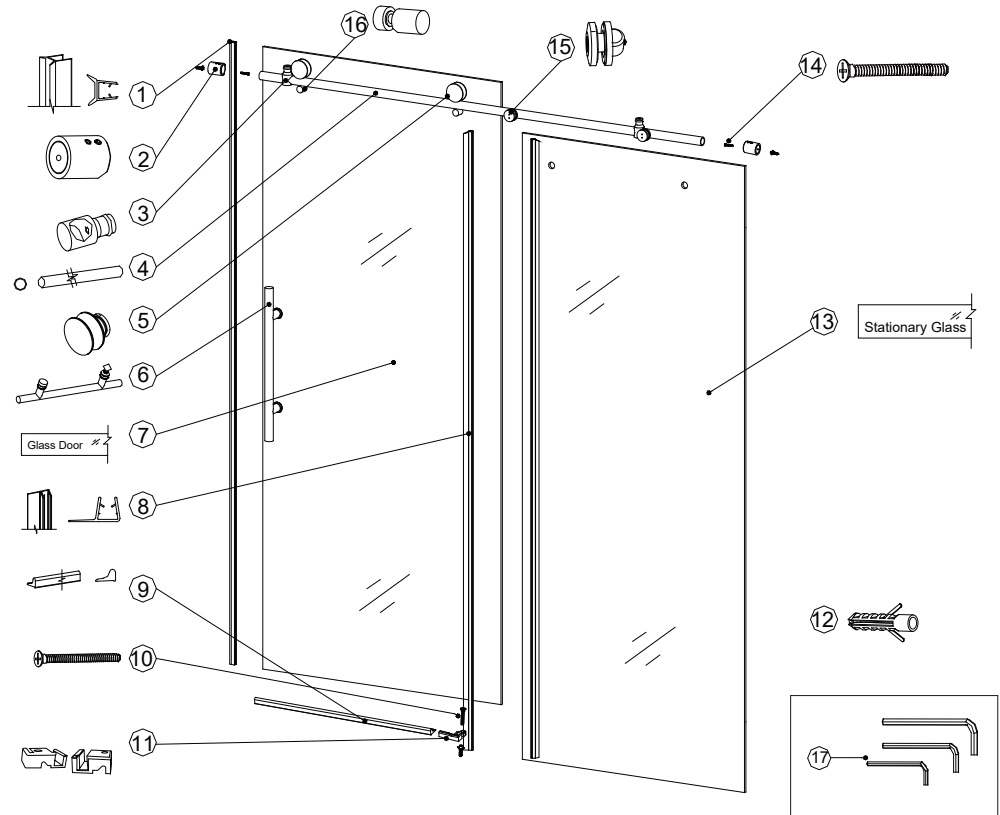
## PREPARATION

1. We strongly recommend that this product be installed by a licensed and insured professional contractor, including the assistance of a second person during installation.
2. After opening all boxes and packages, please read this introduction carefully. Check that all required parts are included in the package by marking all components on the Shower Door Components Detail Sheet. Inspect boxes and packages for shipping damage. If the unit has been damaged, has a finishing defect or has missing parts, please contact our customer support department within 3 business days of the delivery date. Please note that we will not replace any damaged products or missing parts free of charge after 3 business days or if the product has been installed. Feel free to contact us if you have any questions. Attention: Please double check the glass corners and four edges of the two glass doors to ensure that all glass is in perfect condition and without any breakage. Do not attempt to install a shower door if the glass corners are broken.
3. Please note that if you are in doubt about installation compliance standards, please consult your local building codes. Building and plumbing codes may vary by location and we are not responsible for your project's code compliance standards and does not accept any returns.
4. Before installation, make sure the installation surface is leveled and solid, and can support the total weight of the unit. Also, make sure the walls are at right angles. Irregular mounting surface levels or improper angle of side walls will cause serious problems during installation. Note that some adjustments and drilling may be required during installation.
5. Protect all major surfaces of the product during installation. Never place glasses directly on tile floors. Leave the corner protector in place until it needs to be removed. Always use a piece of wood or cardboard to protect the bottom edges and corners of the glass before and during installation.

## TOOLS REQUIRED

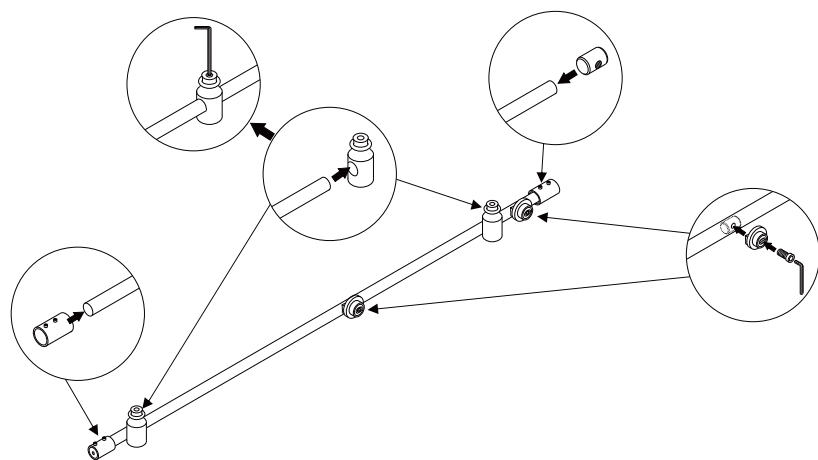
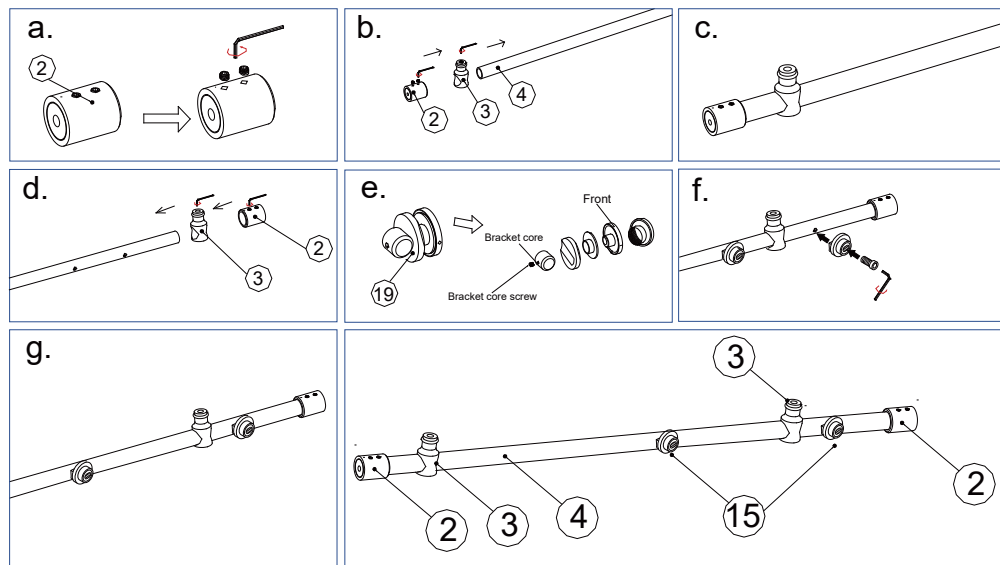


OTHER TOOLS MAY BE REQUIRED

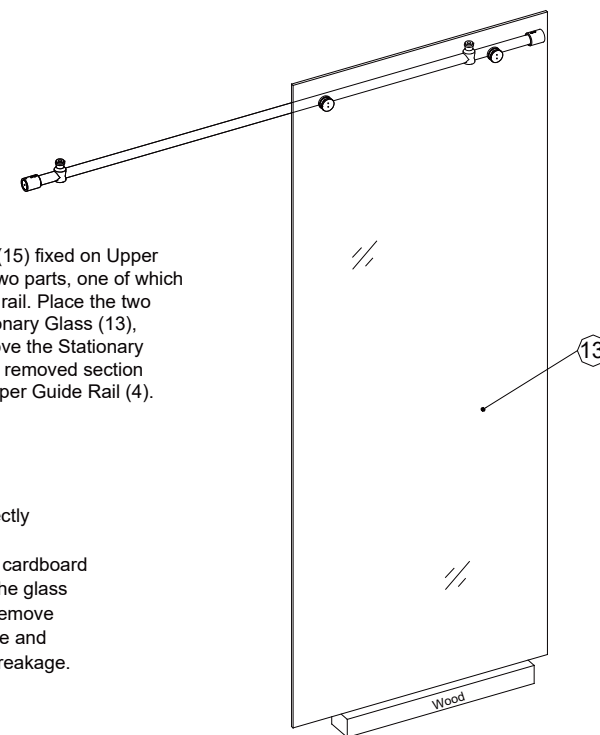
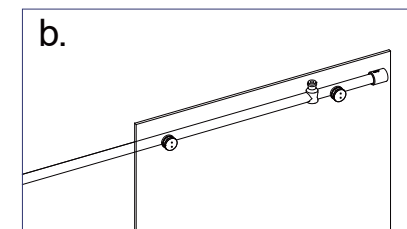
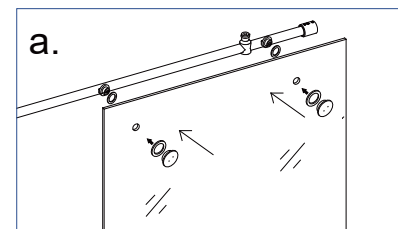


No.	Description	QTY	No.	Description	QTY
1	Bumper Strip	1 pc	10	Screw M4X20	4 pcs
2	Guide Rail Bracket	2 pcs	11	Cover(optional)	1 set
3	Glass Door Stopper	2 pcs	12	Wall Anchor	6 pcs
4	Upper Guide Rail	1 pc	13	Stationary Glass	1 pc
5	Roller	2 pcs	14	Screw M4X30	2 pcs
6	Handle	1 pc	15	Glass Bracket	2 pcs
7	Glass Door	1 pc	16	Safety Pin	2 pcs
8	Side Anti-Water Strip	2 pc	17	Allen Key	4 pcs
9	Anti-splash Threshold	1 pc			

**TEAR OFF THE GLASS PROTECTIVE FILM BEFORE INSTALLATION**



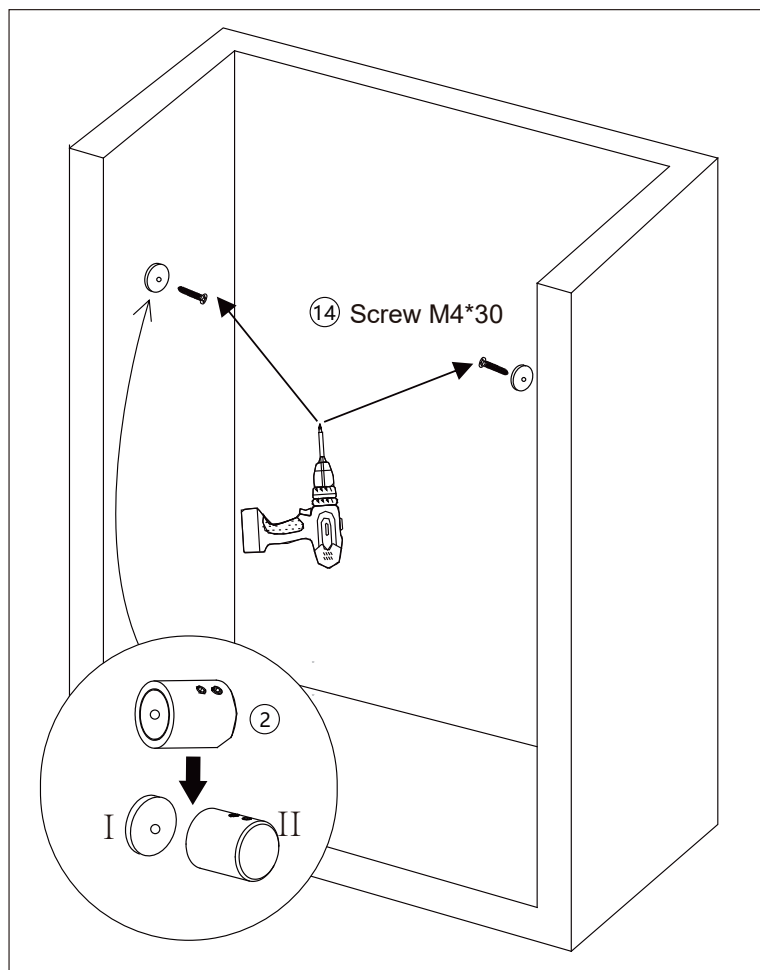
1. Determine a suitable location and place the stainless steel spacers on the support rods as shown. Use the Allen key (17) to loosen the screws on the rail bracket (2) and the glass door stop (3). First put (3) on the stainless steel support rod and fix it in the approximate position as shown in the figure. Then place (2) on both ends of the stainless steel support rod. Then disassemble (15) as shown in the figure, and fix half of it at the small hole of the stainless steel support rod.



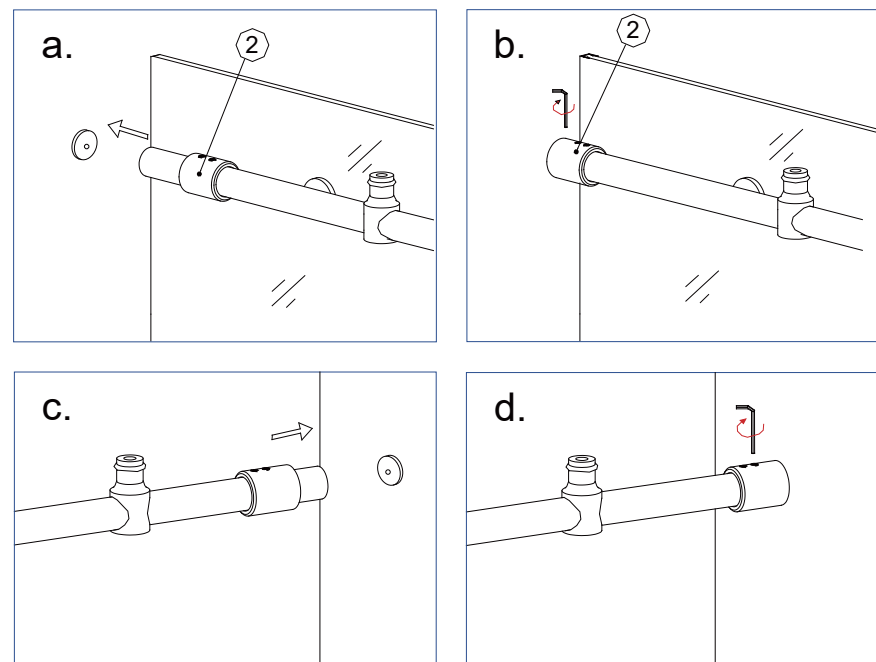
2. Unscrew the Glass Bracket (15) fixed on Upper Guide Rail (4) and split it into two parts, one of which is still fixed on the upper guide rail. Place the two parts on each side of the Stationary Glass (13), corresponding to the holes above the Stationary Glass (13), and then screw the removed section back to the part fixed to the Upper Guide Rail (4).

#### ATTENTION:

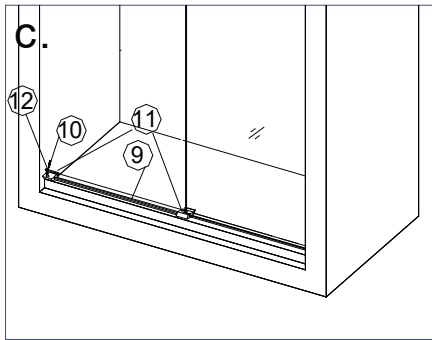
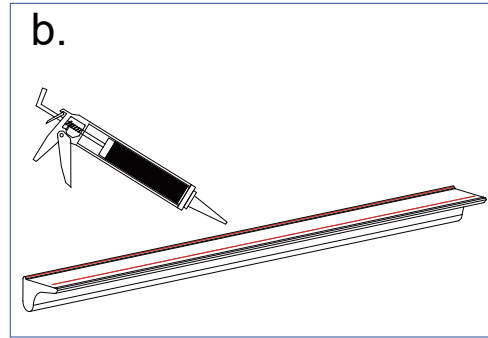
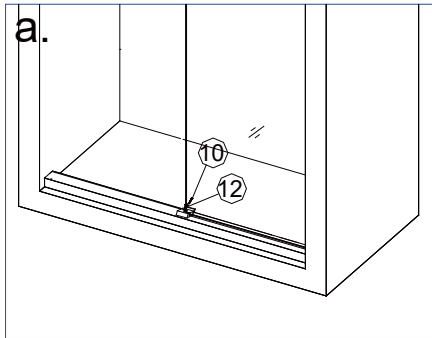
Never set your glass down directly onto a tile or concrete floor.  
Always use a piece of wood or cardboard and leave the corner pads on the glass until it becomes necessary to remove them to protect the bottom edge and the corners of the glass from breakage.



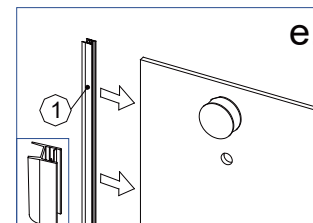
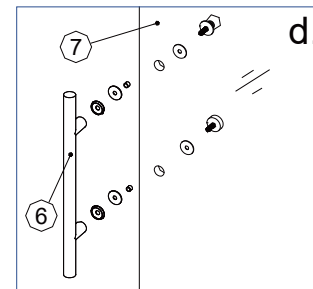
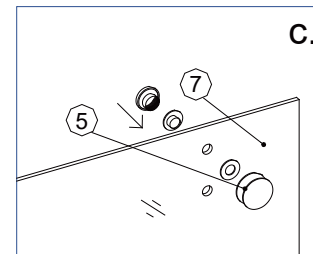
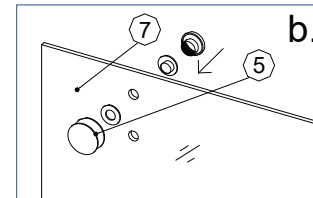
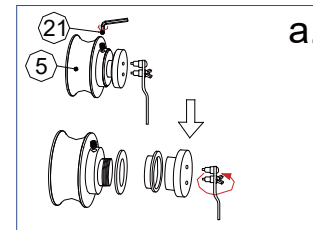
3. Divide the Guide Rail Bracket (2) into two parts: I and II  
 Fix part I of the Guide Rail Bracket (2) to the wall on both sides with 4\*30 screws (14) as shown in the picture g.  
 The other side of the Guide Rail Bracket (2) is installed in the same way. Finally, remove the II part of the Guide Rail Brackets (2) and insert it into the Upper Guide Rail (4).



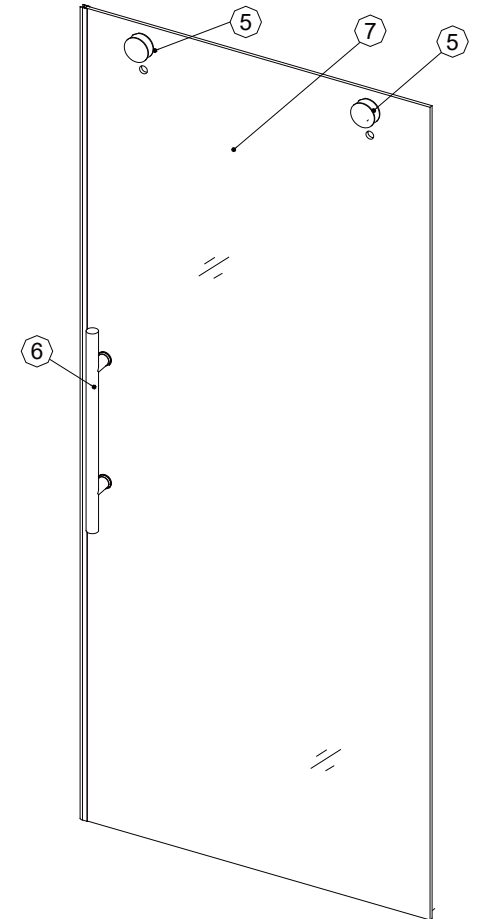
4. Place the Stationary glass (13) back into the designated position. Slide the II part of the Guide Rail Brackets (2) to the two end sides of the Upper Guide Rail (4), then connect II and I part of the Guide Rail Brackets (2). Tighten the set screws on the Guide rail bracket (2) with Allen Key (17) to secure the guide rail to the wall.



5.put the Cover (11) with slot on head of the Anti-splashthreshold (9), slot corresponds to the end of the Stationary Glass and inserts the Stationary Glass into the slot. Mark down the predrilled holes, drill the holes with drill bit, put the wall anchor (12). Use M4x20 Screw (10) to install the Cover (11) at the drilling position then put silicone sealant to the bottom of the Anti-splash threshold (9), secure it to the floor.

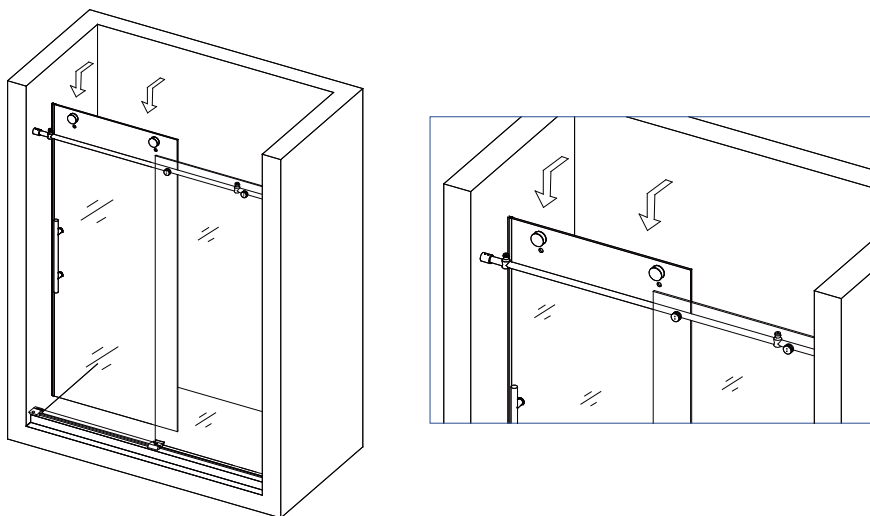


Attention: Need to loosen the small allen screws before loosening the long allen screw on the roller

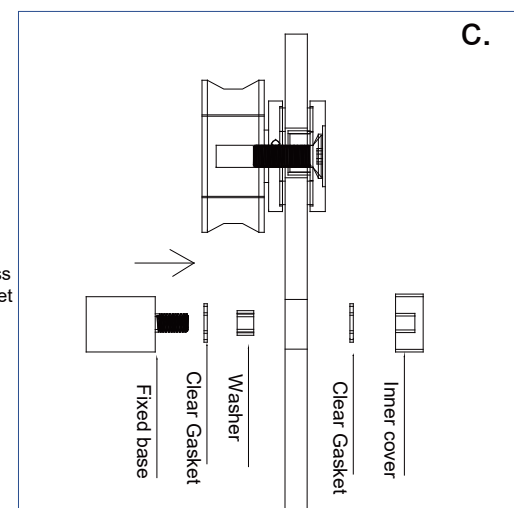
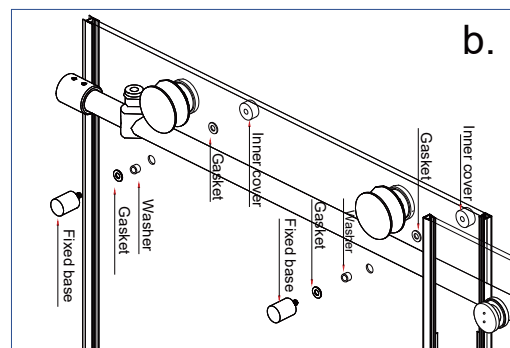
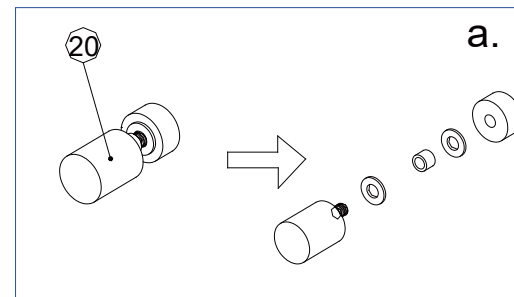
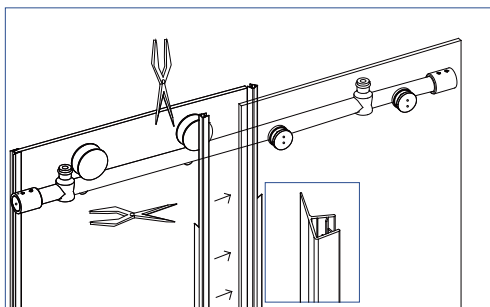


6. Loosen the Rollers (5) screw as shown in the figure to disassemble the rollers (5) and install the rollers to the glass door (7). And then Install Handle (6) and Bumper Strip (1) to the glass door (7).

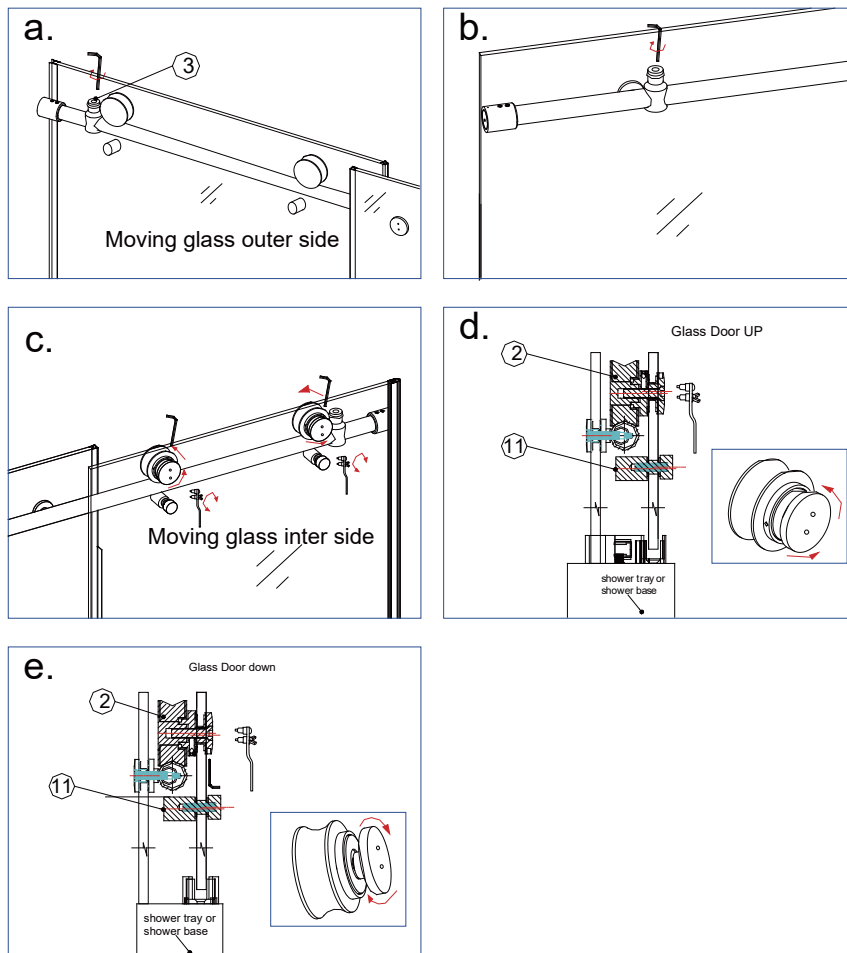
7. Hang the Glass Door (7) back to the Upper Guide Rail (4), slide the bottom of the glass door into the slot of the Guide Block (11). Be careful that the glass door should not touch the metal part of the guide block.



8. Slide the Side Anti-Water Strip (8) to the Stationary Glass (13), remove the flapper that interferes with the Upper Guide Rail (4)

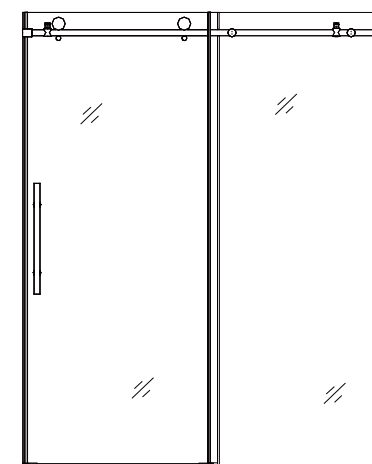
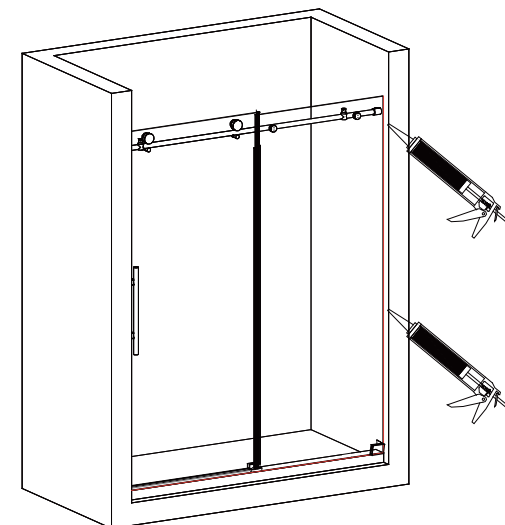


9. Install the Safety Pin(16) to the Glass Door (7). Make sure that the clear gasket will be between the glass and the metal parts of the safety pin.



10. Adjust the Roller(5) and fix the Glass Door Stopper(3)  
 Adjust the fasteners on both Rollers (5) to ensure that the bottom edge of the Glass door (7) will not touch the bottom of the guide block (11).  
 Slide the Door Stopper (3) close to the wall side, slide the Glass Door(7) to make roller(4) contact to the stopper and get perfect space then lock the stopper bottom screw.  
 Please make sure that the Glass Door(7) especially the door corners will not hit the walls when closed and opened

11. Apply silicone sealant on the seams between the stationary glass and the shower base/bathtub, and between the wall and the stationary glass.



**MUST ALLOW SILICONE TO DRY FOR 24 HOURS BEFORE STARTING USING THE SHOWER**