

## MAINTENANCE

# Filters/Filter Change Indicators

### Filters

The filters are critical to the performance of the Capella, and it is important to replace all of the filters on a regular basis. If any of the filters are overused beyond the recommended service life, the performance of the water filtration device can deteriorate. Do not miss the filter replacement cycle or use non-compatible filters as this can affect system performance or damage the unit.

**NOTE:** Contact Brondell at 888-542-3355, or visit us at [www.brondell.com](http://www.brondell.com) to order replacement filters.

### Filter Change Indicator

The LED filter change indicator in the faucet works by tracking both time and water flow from the Capella.

When the faucet LED indicator begins to flash red, it's now time to change the filters and reset the faucet indicator by replacing the battery. A new battery is always included with the Capella RF-30 filter replacement set.

## MAINTENANCE

# Filter Replacement

After replacing the filters, write down the date and filters changed on this Filter Change Chart (a separate sticker is also provided). It's important to track each filter change as the Activated Carbon Plus and Carbon Block Filters are on a more frequent cycle than the E2RO Membrane Filter. A replacement faucet battery is also included with the RF-30 filters.

Filters to Change		Total Time	Date Changed
Change 1 6 Months	<div style="display: inline-block; width: 10px; height: 10px; background-color: black; margin-right: 5px;"></div> <div style="display: inline-block; width: 10px; height: 10px; background-color: gray; margin-right: 5px;"></div> Activated Carbon Plus Carbon Block	6 Months	/ /
Change 2 6 Months	<div style="display: inline-block; width: 10px; height: 10px; background-color: black; margin-right: 5px;"></div> <div style="display: inline-block; width: 10px; height: 10px; background-color: gray; margin-right: 5px;"></div> Activated Carbon Plus Carbon Block	12 Months	/ /
Change 3 6 Months	<div style="display: inline-block; width: 10px; height: 10px; background-color: black; margin-right: 5px;"></div> <div style="display: inline-block; width: 10px; height: 10px; background-color: gray; margin-right: 5px;"></div> Activated Carbon Plus Carbon Block	18 Months	/ /
Change 4 6 Months	<div style="display: inline-block; width: 10px; height: 10px; background-color: black; margin-right: 5px;"></div> <div style="display: inline-block; width: 10px; height: 10px; background-color: gray; margin-right: 5px;"></div> Activated Carbon Plus Carbon Block E2RO Membrane	24 Months	/ /

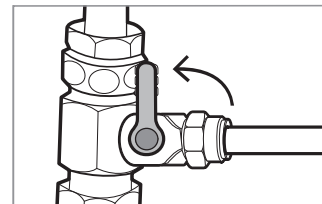
1. Close the T-valve under the sink to shut off the flow of water to the Capella.
2. Once the T-valve is shut off, turn the Indicator Faucet on all the way and keep it on until the water tank is emptied and the pressure is released in the system. This should take about ten minutes, and the stream of water will slow to a stop when the tank has emptied. Turn the faucet off.
3. Remove each filter by turning to the left until the filter comes out of the Filter Head Connection Assembly.
4. Install the new filters by following the procedure below.

**NOTE:** It is very important to install the filters in the correct order.

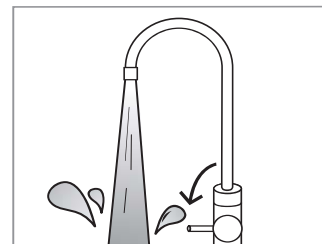
Match the same label colors to the filter head labels, from left to right:

- 1) Activated Carbon Plus Filter
- 2) E2RO Membrane Filter
- 3) Carbon Block Filter

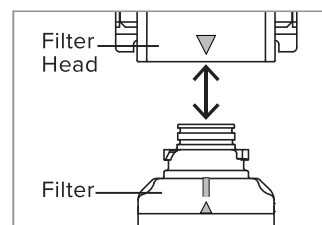
- a. To insert the filters, first lineup the arrow on the filter heads with the arrow on the filters.



Step 1



Step 2

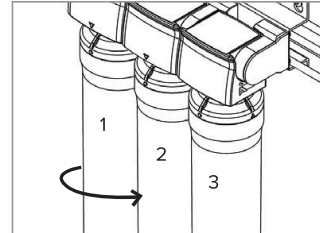


Step 4a

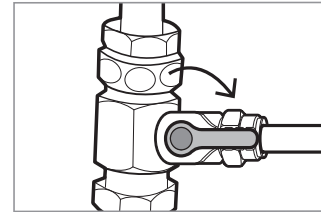
## MAINTENANCE

# Filter Replacement

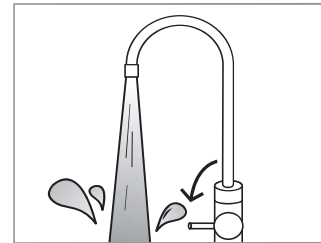
- b. With the top and bottom arrows still lined up, insert the top of the filters into the housing and turn to the right until the filters will not turn anymore.
5. Open the T-valve to restore the flow of water to the Capella.
6. Flush the new filters and the system thoroughly with the following steps.
  - a. Turn the faucet on all the way for 10 minutes to purge all the air out of the system. It is normal for some water to flow out of the faucet during this first purge.
  - b. After the initial 10-minute purge, turn the faucet off and let the system run for 90 minutes or until the tank fills.
  - c. After 90 minutes, turn the faucet on all the way once more for 10 minutes (or until the tank empties) to flush the filters and the water tank.
  - d. Turn the faucet off.
  - e. The tank will fill again in about 90 minutes, and then filtered water will be ready to drink.
  - f. Record installation date on the filter change sticker chart, and place behind the sink cabinet door or another accessible place.



Step 4b



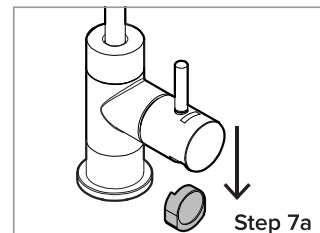
Step 5



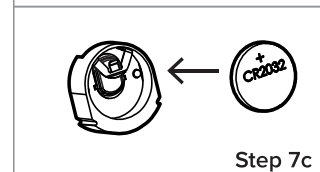
Step 6a

### Battery Replacement For LED Indicator Faucet

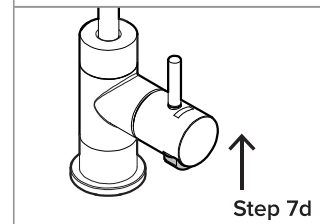
7. Replace the battery in the faucet LED indicator to reset the filter change reminder. The battery type is CR2032, and Brondell provides one with every set of RF-30 filters.
  - a. Under the faucet handle, locate the black rubber battery compartment. Grasp it from the sides, and pull down as shown.
  - b. Remove the old battery from the compartment by lifting the silver metal tab and sliding the battery out of the rubber casing. Wait 30 seconds for the residual energy to drain to reset the indicator.
  - c. Replace with a new CR2032 battery by sliding the battery under the silver tab, making sure that the words on the battery are facing out.
  - d. Push the black rubber battery compartment back up into the faucet handle.
  - e. The indicator will blink red once then blue once, then it will function as normal.



Step 7a



Step 7c



Step 7d

**For California Residents:** CR2032 batteries contain Perchlorate Material — special handling may apply.  
Visit [www.dtsc.ca.gov/hazardouswaste/perchlorate](http://www.dtsc.ca.gov/hazardouswaste/perchlorate) for more information.

## MAINTENANCE

### **Extended Non-Use**

If the system has not been used for two weeks or more, turn on the indicator faucet and allow the system to drain completely (about 10 minutes). After the system is drained, turn off the indicator faucet and allow the system to regenerate the water supply (about 90 minutes).

If the system will not be used for more than 45 days, close the T-valve under the sink to shut off the flow of water to the system. Turn on the indicator faucet, and allow the system to drain completely and the pressure to be released (about 10 minutes). Turn the faucet off.

When you are ready to use the system again, follow the instructions for “Flushing the System” on page 18.