



Laurel Mountain

# DUAL CORNER PLUS

60" x 60" Drop-In  
Acrylic Air Bath

Model Number

**6060DPAR064**

Right Hand Drain Air Bath in White

**6060DPAL064**

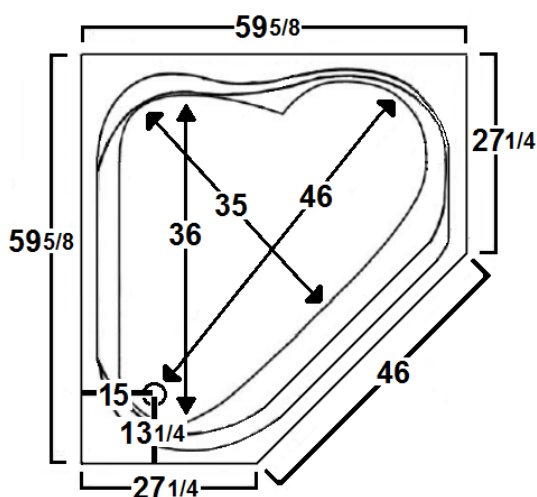
Left Hand Drain Air Bath in White

## Features

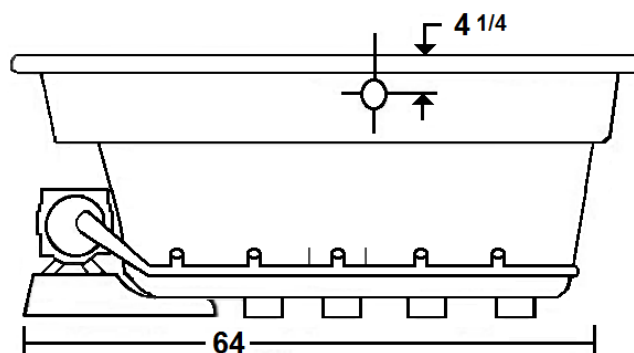
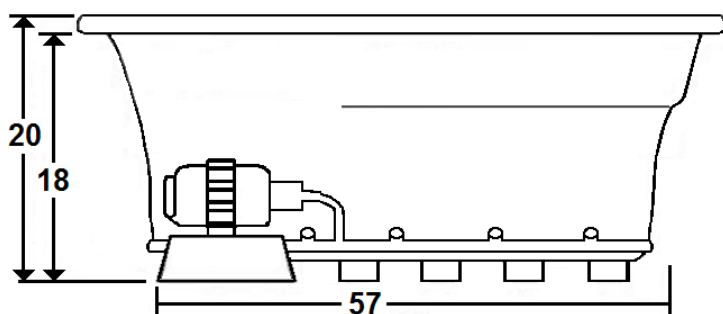
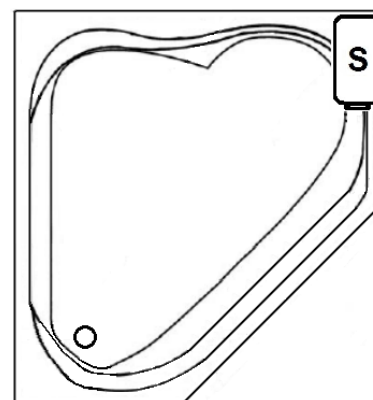
- 28 high output lateral air jets
- Color-matched jet trim
- 12.0 Amp variable speed blower
- Constructed of high-gloss durable acrylic
- Automatic purge cycle with timer
- Pre-leveled base for easy installation
- Made in the USA



**\*All dimensions are +/- 1/2" and subject to change without notice\***  
**Confirm specifications before installation**



Standard (S) Pump Location



## Technical Information

- Weight: 170 lbs.
- Water Depth to Overflow: 13 3/4"
- Water Operating Level: NA
- Water Capacity: 78 gal.
- Sump Dimension: 46" x 35"

## Electrical Requirements.

- Standard Blower: 12 Amps
- 20amp Dedicated GFCI required

\*Cut-Out Dimensions: Use the outer dimensions shown above and come in 1" on all sides.