

**Mainstream® 32" x 32" Shower Base**

**A8018T-COI.011**

**Product Features:**

- Durable Molded Stone™ construction for strength, durability and resistance to peeling and chipping
- Single threshold
- Easy to clean, non-porous surface
- Mold and mildew resistant
- Textured floor for slip resistance
- Preformed support base for easier installation
- Integral drain with quick drain connector
- Color-matched, plastic strainer included
- One-piece with 1-1/2" water retention tiling flange
- 5-Year limited warranty

**Nominal Dimensions:**

32" x 32" x 5"

(813 x 813 x 127 mm)

**Compliance Certifications -**

**Meets or Exceeds the Following Specifications:**

- CSA B45.5/IAPMO Z124
- IAPMO R&T cUPC
- ICC A117.1



**A8018T-COI.011**

SEE REVERSE SIDE FOR ROUGHING-IN DIMENSIONS  
AND PRODUCT SPECIFICATIONS

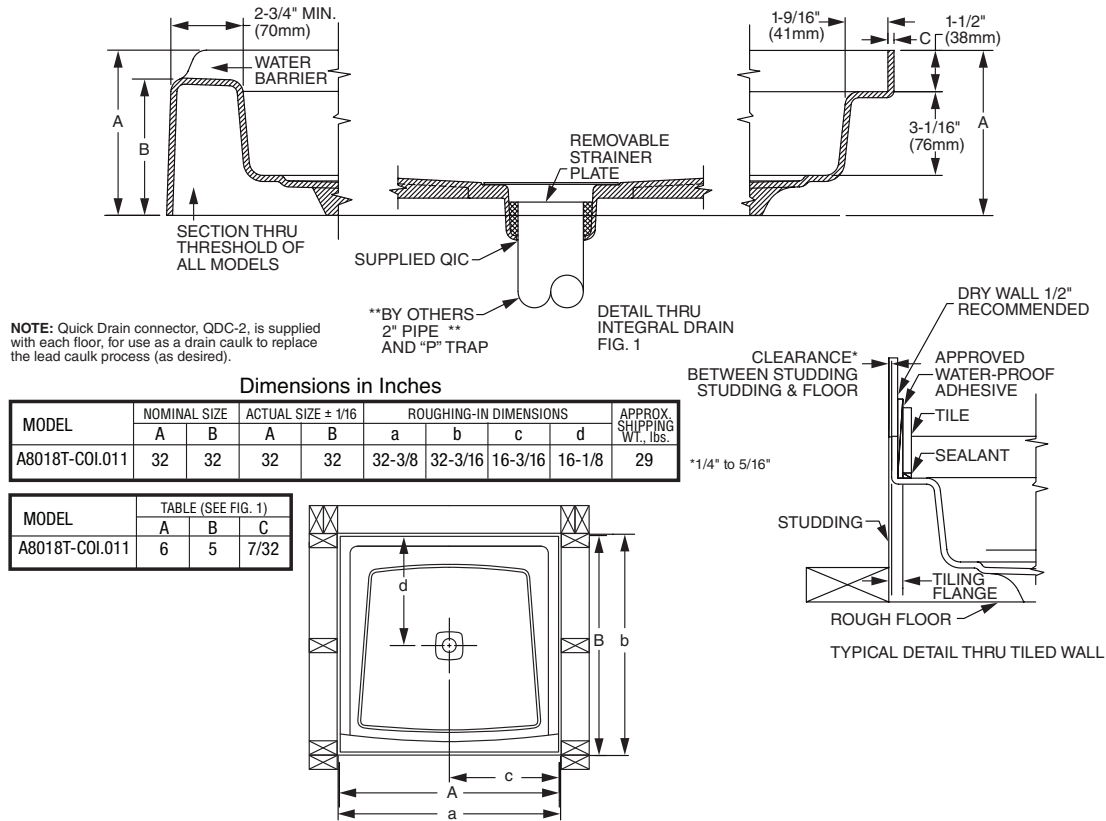
**To Be Specified:**

- ☐ Color: .011 Arctic White

**Optional:**

- ☐ Shower Door: AM00842400.213
- ☐ 4pc Shower Wall Set: 2950SWT32.011

A8018T-COI.011



**IMPORTANT:** Roughing-in dimensions may vary 1/2" and are subject to change or cancellation without prior notice. No responsibility is assumed for use of superseded or voided leaflets.

**NOTES:**  
REFER TO INSTALLATION INSTRUCTIONS SUPPLIED WITH SHOWER BASE FOR ADDITIONAL INFORMATION.

**IMPORTANT:** Dimensions of fixtures are nominal and may vary within the range of tolerances established by ANSI Standard Z124.1 / CSA. These measurements are subject to change or cancellation. No responsibility is assumed for use of superseded or voided pages.

**GENERAL SPECIFICATIONS FOR A8018T-COI.011 SHOWER BASE**  
 INSTALLED SIZE \_\_\_\_\_ 813mm X 813mm X 130mm  
 (32 X 32 X 5 IN.)  
 WEIGHT \_\_\_\_\_ 13 Kg. (28 LBS.)  
 SHOWER WELL AT RIM \_\_\_\_\_ 711mm X 679mm (28 X 26-3/4 IN.)  
 FLOOR LOADING \_\_\_\_\_ 20 Kgs/Sq. m. (4.0 LBS./FT.<sup>2</sup>)  
 (PROJECTED AREA)