

FORIOUS

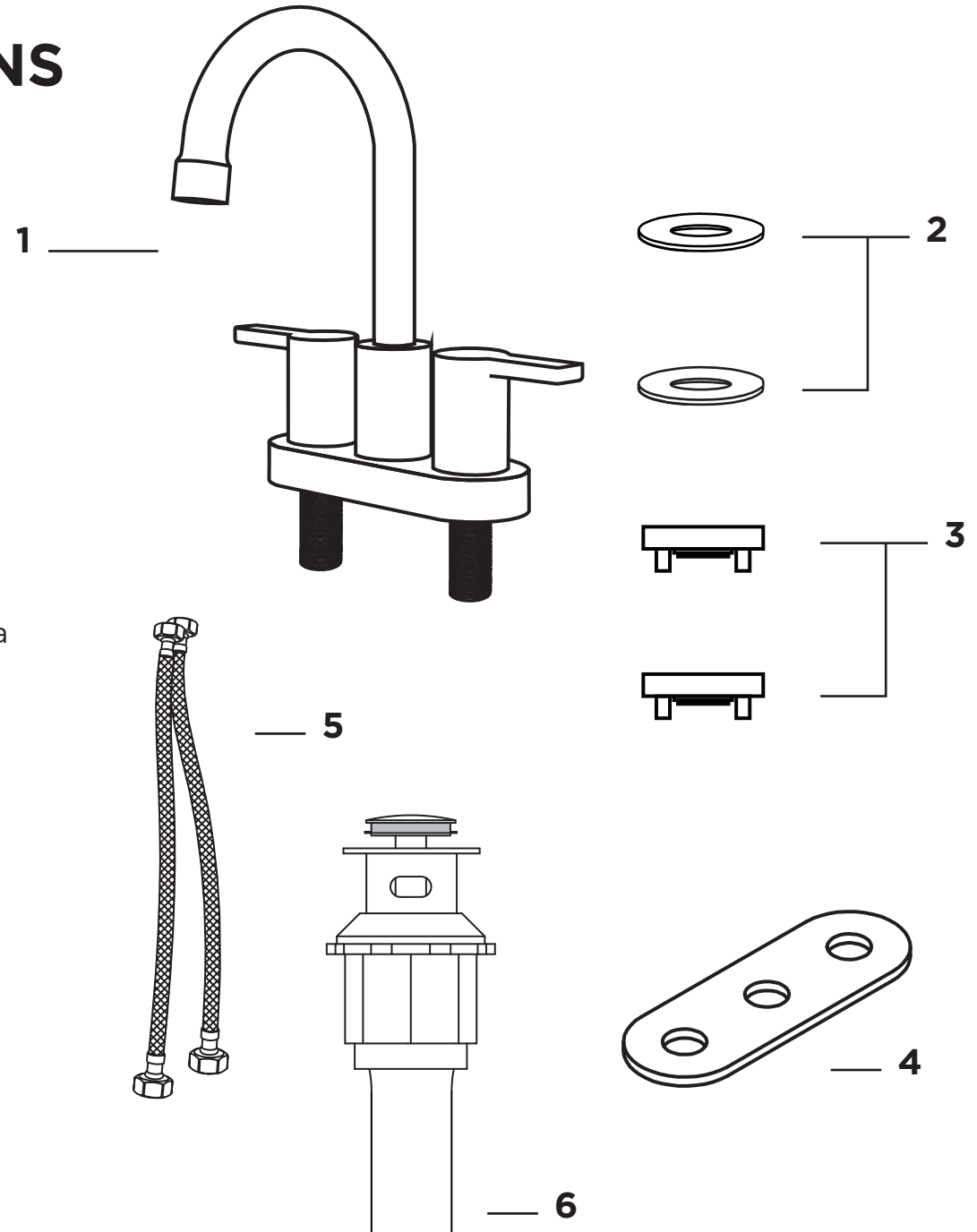
INSTALLATION INSTRUCTIONS

Included In the Package:

1. Bathroom Faucet
2. Rubber Washer x 2
3. Plastic Fixing Nut x 2
4. Plastic Plate
5. Hot and Cold Water Supply Hoses
6. Pop Up Drain

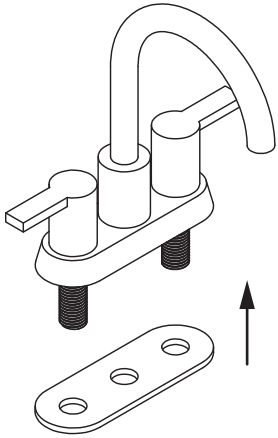
Before Installation:

- Turn off the water supply valves. Clean the mounting area of the sink.
- Recommended width of mounting area is 102mm (4") measured between centers of outside mount holes.
- Diameter of mount holes must be between 25.4mm-38mm (1.00"-1.50").
- Max countertop thickness is 30mm (1.20")
- Water pressure Min 0.05MPa (7 psi) / Max 0.75MPa (109 psi)
- Water temp Min $\geq 20^{\circ}\text{C}$ (68°F) / Max $\leq 85^{\circ}\text{C}$ (185°F)

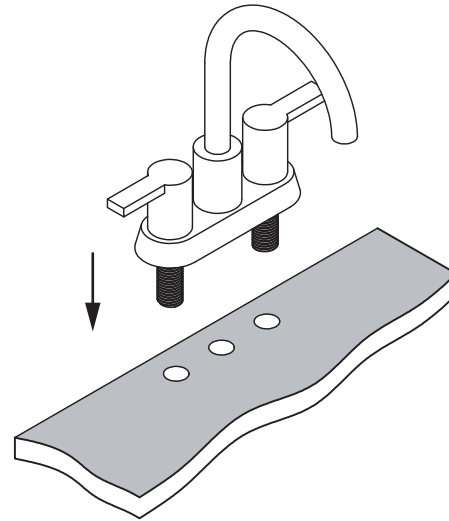


Installation Steps:

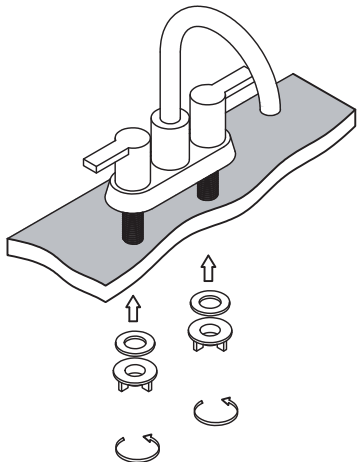
- 1.** Place the plastic plate at the bottom of the tap.



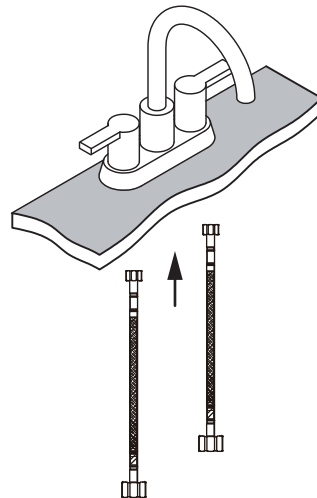
- 2.** Put the faucet in the sink.



- 3.** Place the rubber washer and plastic fixing nut in the bottom of the cold and hot water handles in turn.



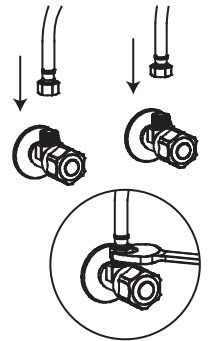
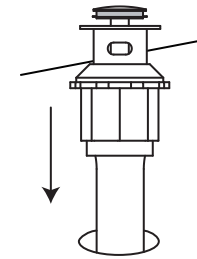
- 4.** Connect the top of the hot and cold water pipes to the bottom of the hot and cold handles.



- 5. Notice:** Open the water valve at this time, to drain out the sewage in the water pipe for 15 seconds and then close it.

- 6.** Screw the water inlet hose nut onto the water valve and tighten it with a wrench. Finally, open the water valve and enjoy your faucet. (If your valve thread doesn't match, please contact the seller to get the thread adapter.)

- 7.** Install the pop-up sink drain stopper.



Maintenance:

- Always operate the faucet gently to ensure years of use.
- To maintain the finish, always blot dry any water on the faucet surface. Clean with a damp non-abrasive sponge and wipe dry with a clean soft cloth.
- Although the finish is very durable, certain cleaners can damage it. DO NOT use detergent powder, polishing powder, a nylon brush, or anything that may scratch the finish.
- DO NOT use acidic cleaners on the faucet.
- If air temperature falls below freezing (0°C / 32°F), run the faucet to prevent freezing.
- Shut off water supply valve when not in use for long periods.
- We reserve the right to make revisions to product design without notice.