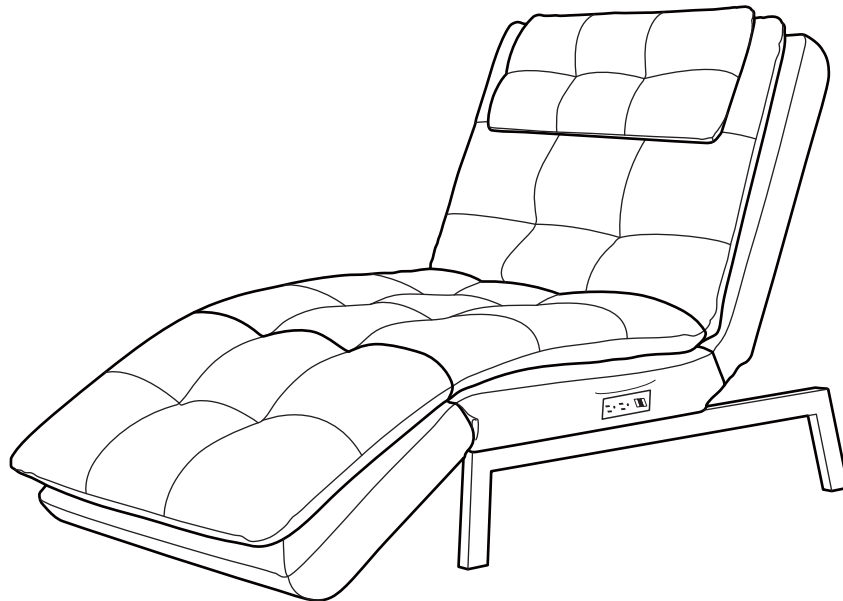


ARES CHAISE

ASSEMBLY INSTRUCTIONS



DO NOT RETURN PRODUCT TO THE STORE

individual stores do not stock parts.

If a part is missing or damaged, call our toll - free customer service line.

Need parts or assistance?

Please call :

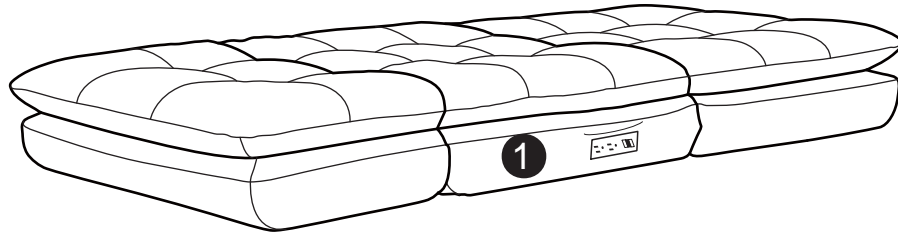
866-626-7826

For prompt, reliable service; please have your assembly manual ready.

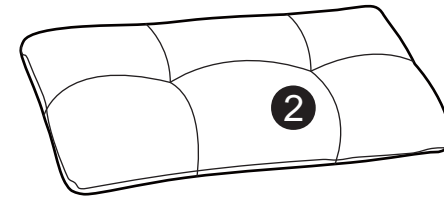
WARNING

- This product has been designed for seating one (1) average adult. To prevent injury and damage to this unit, PROHIBIT jumping on it.
- This product is designed for home use and not intended for commercial use.
- Children under the age of 5, small infants and babies should not sleep alone on this product for safety reasons.
- Recommended # of people needed for handling: 2 (however it is always better to have an extra hand.)
- THIS INSTRUCTION BOOKLET CONTAINS **IMPORTANT** SAFETY INFORMATION. PLEASE READ AND KEEP FOR FUTURE REFERENCE.

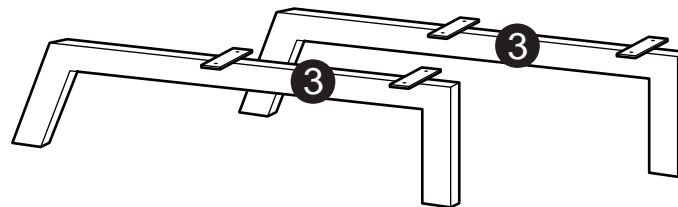
PARTS



Chaise Body
QTY:1

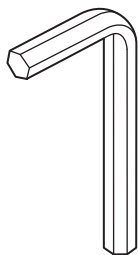


Pillow Cushion
QTY:1

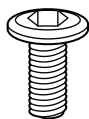


Leg
QTY:1Pair

HARDWARE



A
Allen Key
M4
QTY : 1 PC



B
Bolt
1/4" X 3/4"
QTY : 8 PCS

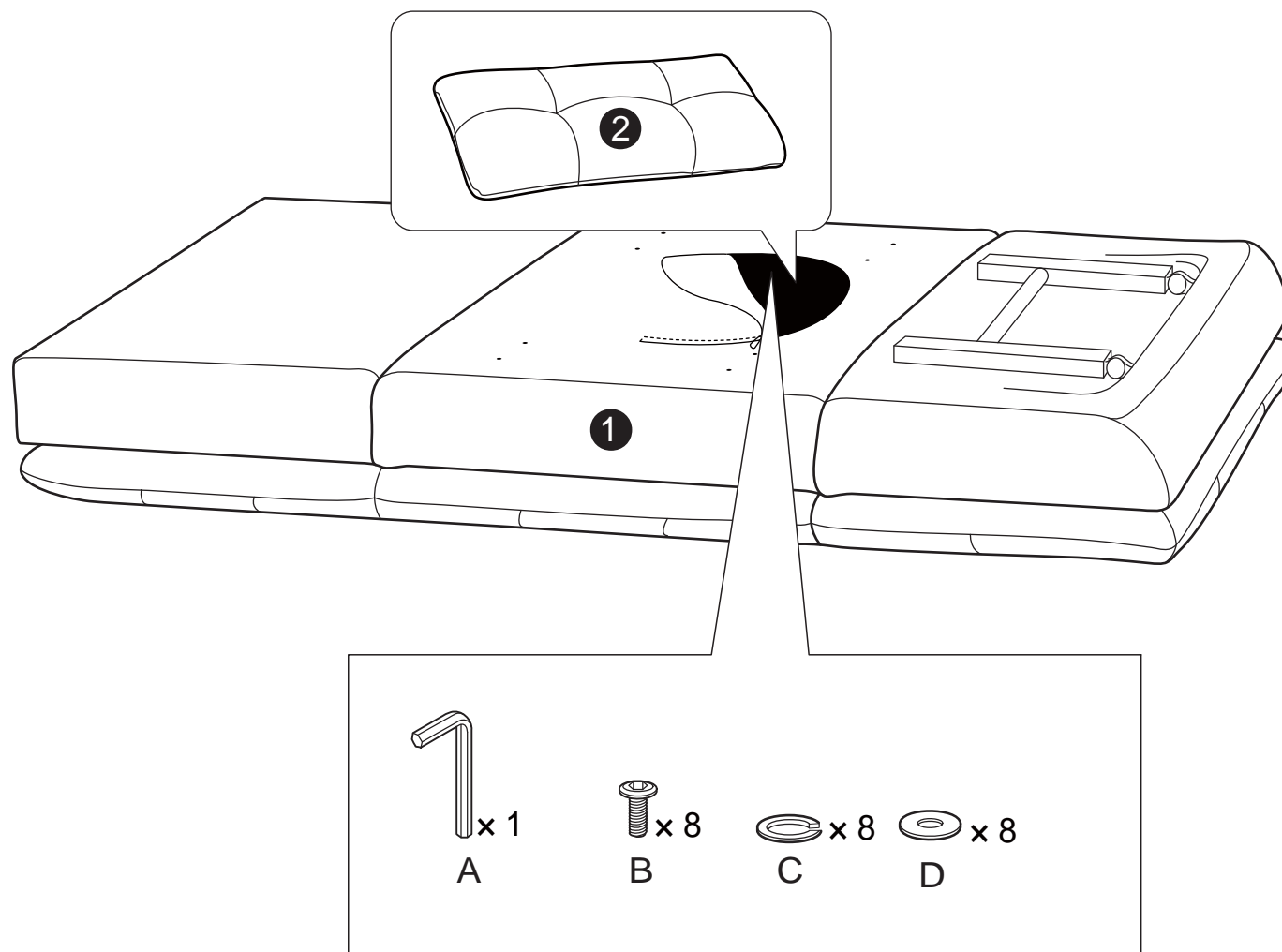


C
Spring Washer
1/4"
QTY : 8 PCS

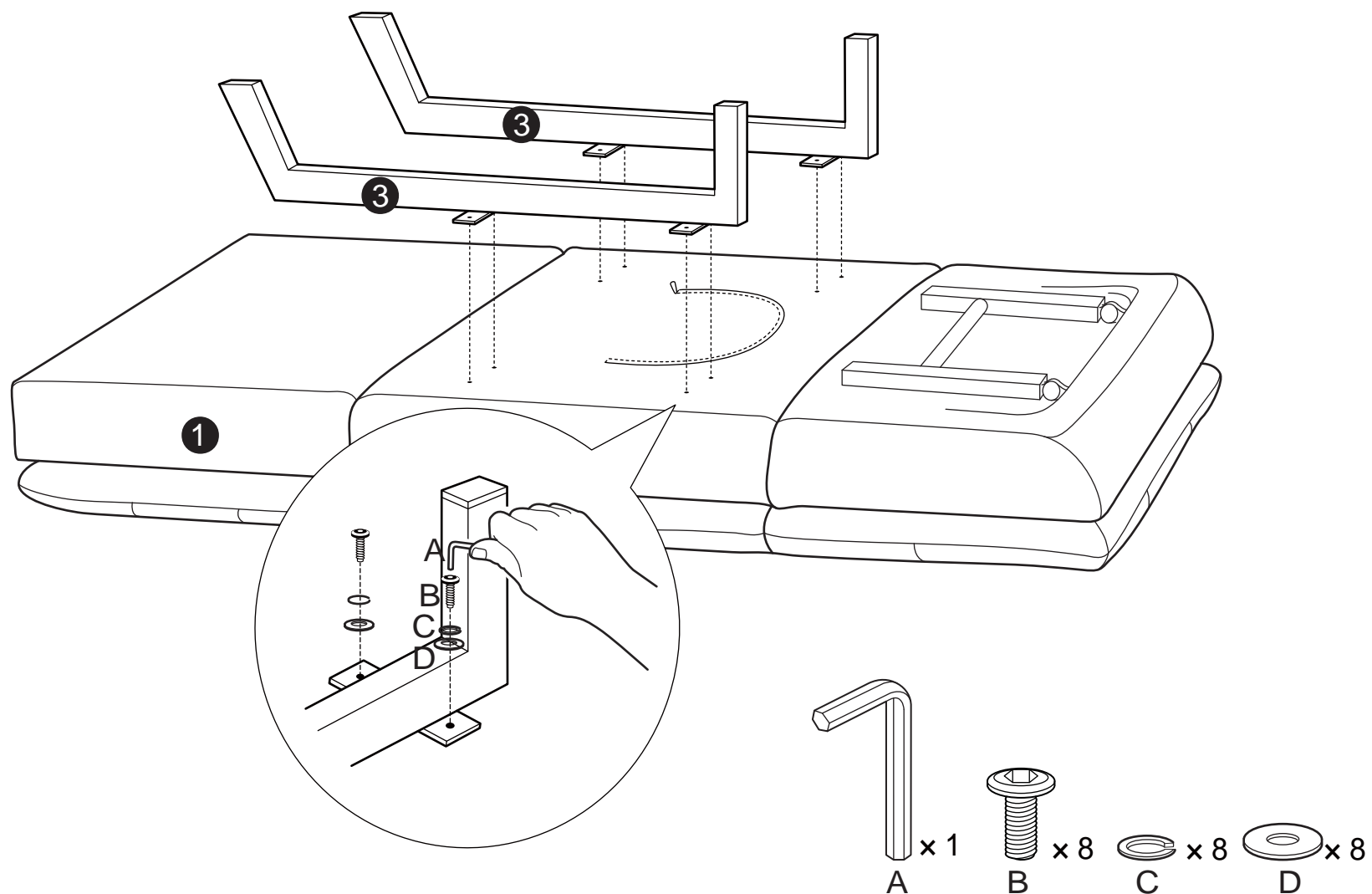


D
Washer
1/4" x 0.63"
QTY : 8 PCS

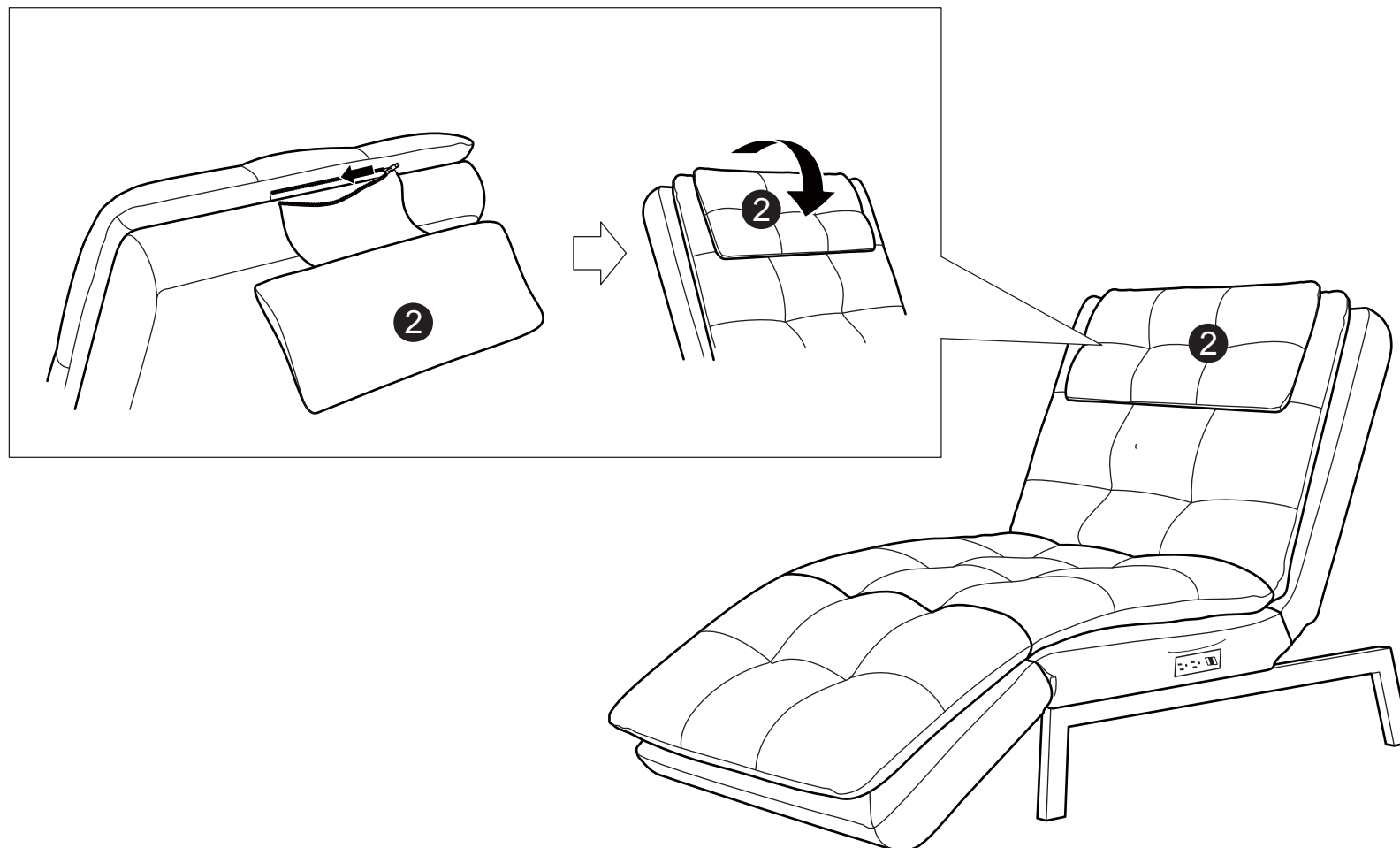
Step 1 :



Step 2 :



Step 3 :



FUNCTIONS :

