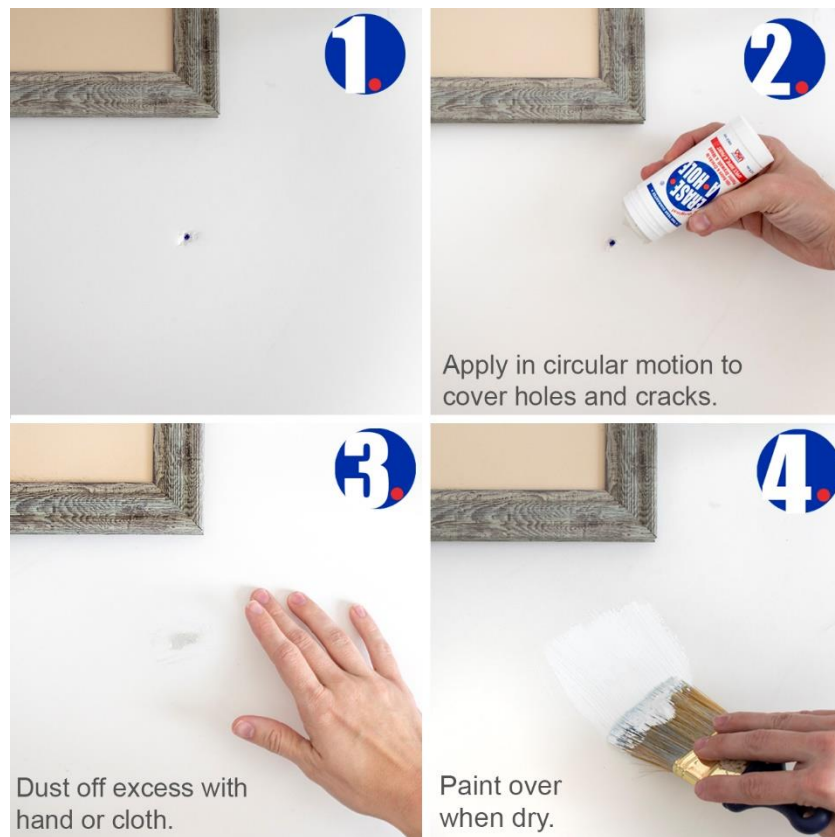


Simply Apply-Wipe-Paint



Pro Tips:

- Use Erase-A-Hole Wall putty for holes or cracks of any size. If the size is larger than your thumb nail then you may need to have two applications allowing each application to dry.
- Use a putty knife or flat edge of any kind to match smooth wall textures.
- Wipe with cloth or sponge for textured walls. You can even over apply or build up the hole when applying and wipe the access off with wet cloth until the texture is matched.
- Use primer to ensure zero flashing