

C

B

A

**Included parts:**

- bidet sprayer head
- T-Valve with flat rubber washer:  
3/8" x 1/8" x 1/2"
- metal spiral bidet hose: 47.2"
- sprayer holster with mounting screws  
and toilet tank clip

**Before getting started,  
you may need:**

- A small towel or bucket to catch  
residual water.
- An adjustable wrench to tighten water  
supply connections.
- Teflon tape to create a watertight seal  
between plumbing connections.

Check the water supply line: If the line  
that connects the toilet tank to the  
water shut-off valve is a rigid pipe, you  
will need to replace it with a flexible  
water supply line before installation.



**WARNING:**

Failure to observe the following warnings may  
result in flooding, leaking, or product damage.

After each use, you must turn the T-Valve off  
to stop the water supply to the bidet hose  
and sprayer.

All hand-held sprayers and hoses have seals  
and parts that can leak from rough handling,  
misuse, dropping the sprayer, or daily wear  
and tear.

To avoid water damage to your home or  
property, never leave the hose and sprayer  
under pressure when not using the product.

Do not disassemble, repair, or modify the  
product yourself.

Do not connect the main water supply to the  
hot water pipe or supply (only connect to the  
cold water supply).

After the installation, make sure to check all  
water supply connections for leaks. Rubber  
washers should be in place for the water  
connection hoses and T-Valve.

Do not use the product if it is not working  
properly. Please close the main water supply  
valve, and call the Brondell Service center at  
(888) 542-3355. Failure to do so may result  
in flooding.

**Brondell®**

Feels better already.

PO Box 470085  
San Francisco, CA 94147-0085  
(888) 542-3355  
brondell.com

#22LES30QSG\_0725

**Brondell®**

**EasySpa®**  
**Essential Hand-held Bidet**

**Quick Start Installation Guide**



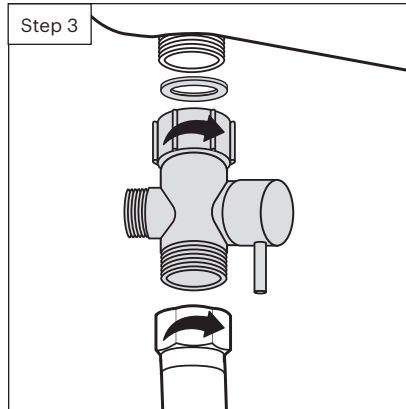
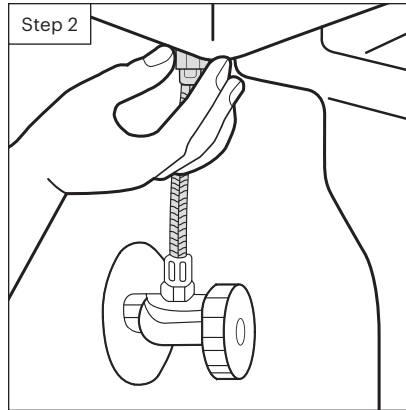
For Owner's Manual and  
Help Center support, scan  
QR code or enter URL.

[www.brondell.com/7vuan7be](http://www.brondell.com/7vuan7be)

This guide saves trees,  
water, and energy.

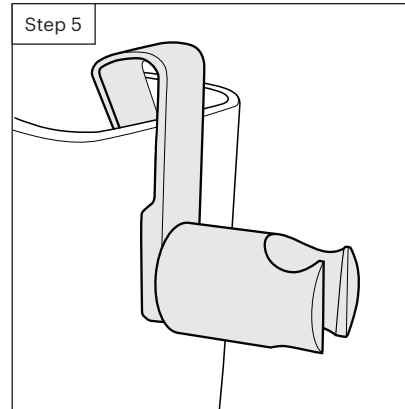
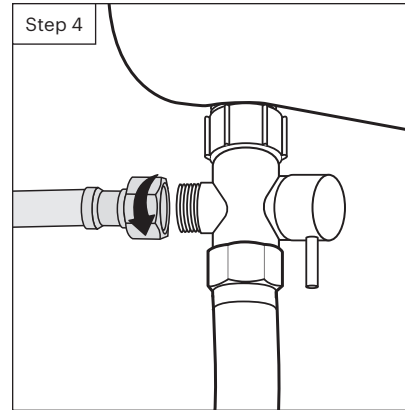
**D****Installation:**

1. Turn off water supply valve and flush toilet. Hold down handle to completely empty tank.  
**NOTE:** Do not continue without completing the above steps. Failure to do so could result in flooding, leaking, or damage to the bidet.
2. Disconnect the water supply line from under the toilet tank. Do not disconnect from water supply valve on the wall.
3. Insert flat rubber washer into the top of the T-Valve and connect to bottom of toilet tank. Reconnect water supply line to the bottom of T-Valve.

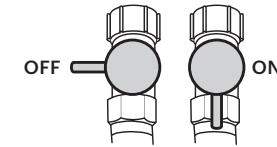
**E**

4. Attach one end of the metal spiral bidet hose to bidet sprayer head and the other end to the open end of the T-Valve.
  5. Mount the sprayer holster.
- Toilet mount:** Attach the holster mount to the toilet tank clip using the small screw provided. Lift the lid of the toilet tank and hang where desired.
- Wall mount:** Attach the holster to the wall with the provided drywall screws and anchors.
6. Turn on the water supply valve slowly and wait for 5 minutes to check for leaks.

**NOTE:** If there is any leaking, check all rubber washers and make sure all water connections are tight and secure. If necessary, you can use Teflon tape for any leaking connections.

**F****To use bidet sprayer:**

1. Open the T-Valve.



2. Press button on front of bidet sprayer to wash.
3. Press button on back of sprayer to stop wash.
4. When finished, close the T-Valve to turn off the water.

**WARNING:**

Always turn off T-Valve when bidet is not in use. Failure to do so may cause flooding and water damage.