



05 : 00

estimated
assembly time



1 or more

people required

Ok, let's
get started!



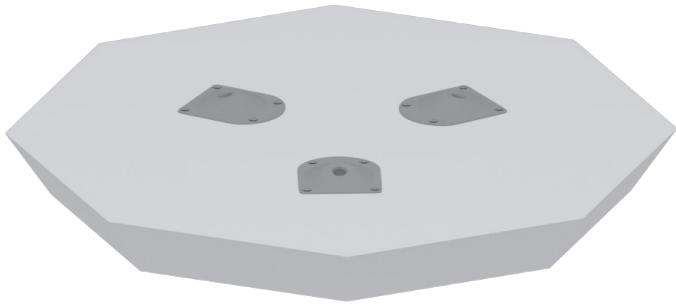
- Put on mood music!
- To prevent damage to product, use the clean side of package carton or rug as working surface for assembly.
- In the event of missing or damaged parts, delivery problems etc., please reach out to our team.
We will be happy to fix the problem!

care guide

- Clean regularly with a soft and dry cloth.
- To protect finish, avoid use of abrasive cleaners.
- Wipe up spills immediately. Please!



product parts



(A)
Tabletop
x1



(B)
Table Legs
x3

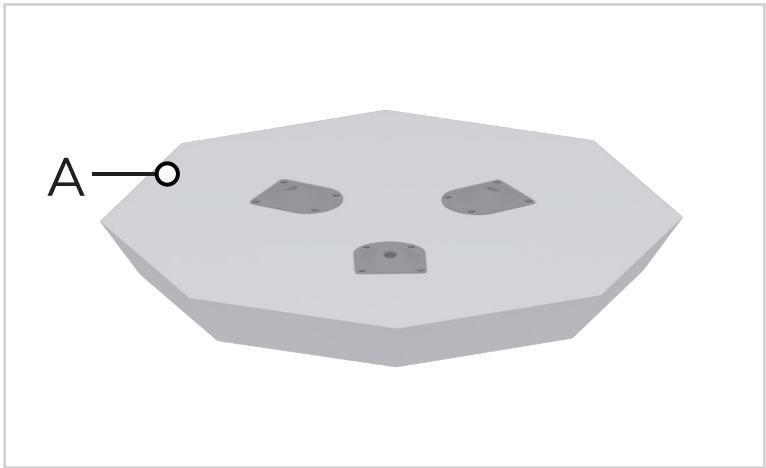
assembly instructions

Friendly Tip: Take a deep breath going in. This may be a tricky part, but nothing too overwhelming. Just follow these steps to the T and the outcome will be worth it!



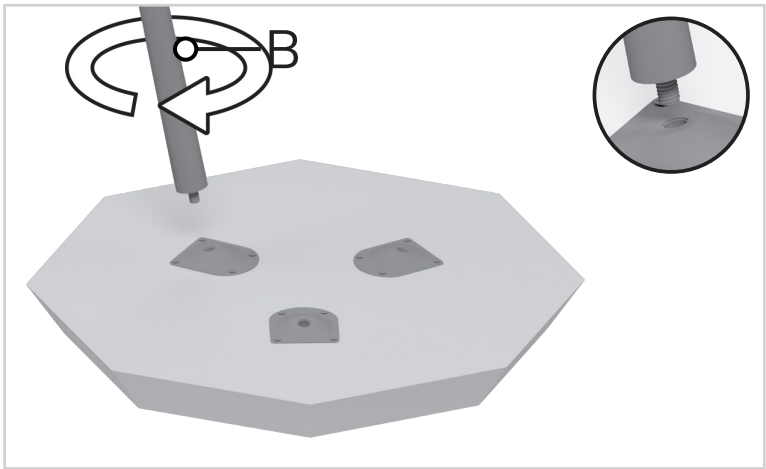
step 1:

Turn the tabletop (A) upside down.



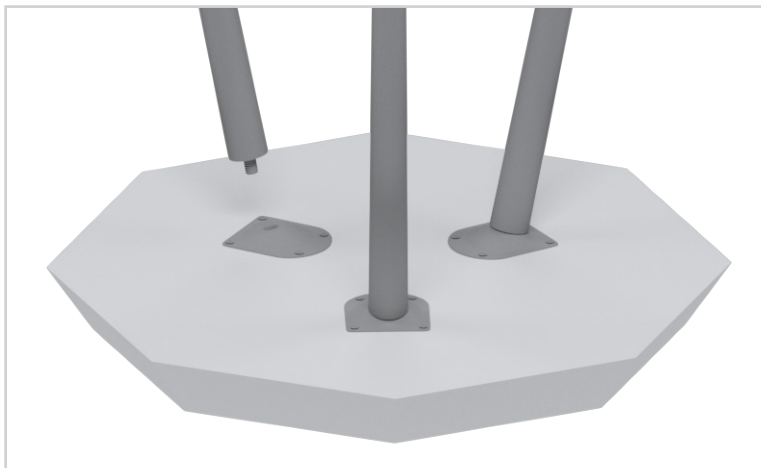
step 2:

Start by attaching any one table leg (B) into any one slot by rotating clockwise. This is a universal assembly; any table leg (B) can fit into any slot on the tabletop (A).



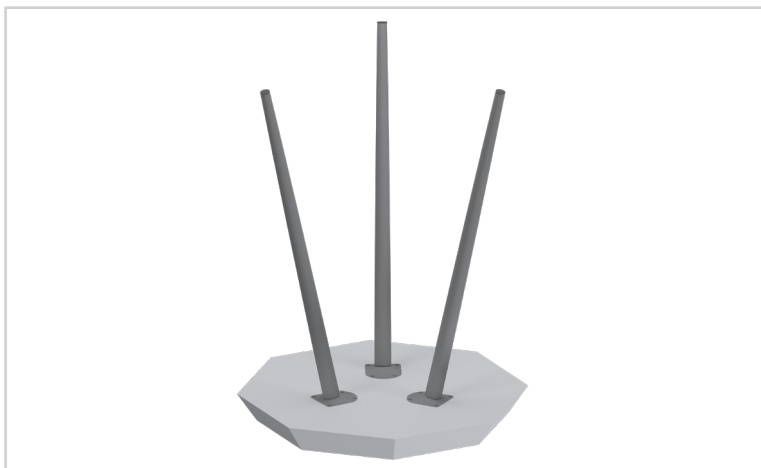
step 3:

Repeat step 2 with the remaining two legs (B).



step 4:

Make sure all the table legs (B) are tight and secure.





Voila! Your table is now assembled and secure!

you've
got
a home
with us

