

# Limited Warranty Information

Thank you for choosing an Alpine product! We aim to please with our wide range of products including Fountains, Birdbaths, Statuary, Pond Supplies & More. All of our products are constructed from the highest quality materials. In the event that we have not achieved our usual standard of excellence, we will repair or replace, at our discretion, within the warranty period. A valid proof of purchase, with the purchase date clearly indicated, must be provided. Photos of defective merchandise will also be required to help distinguish the actual cause of the defect. Please read below for a detailed description of warranty coverage.

## • Water Damage

Alpine products are not manufactured to withstand extreme temperatures. Improper storage that allows water to freeze within a product may cause damage and is considered negligence and will, therefore not be covered under this warranty. The use of "hard water" and/or caustic cleaners can affect the paint or other finishes. Failure to keep the unit clean, and use of such additives/cleaners, will also void the warranty. Please note: for fountains, it is normal for some splashing to occur and protecting the immediate surfaces is not the responsibility of Alpine Corporation

## • Paint & Color (Retention and/or Loss)

The use of water will cause natural erosion to the color. This area can be touched up using standard paint. The paint is designed to protect the entire finish against breakdown of color. As with any product, all finishes with time will gradually fade and discolor. The warranty will only cover against severe or complete fading within the first year from date of purchase with the above exclusion.

## • Procedure/Service

Should a warranty/claim be needed, you should contact the retailer from whom you purchased the product. If that is not an option, you can contact Alpine Corporation at [www.alpine4u.com](http://www.alpine4u.com). When contacting Alpine Corporation, you must be prepared to show proof of purchase, provide photographs and any other information needed to validate your claim. This may be necessary to distinguish between a partial or complete replacement of a defective product. The warranty does not cover any items with multiple parts; the warranty will **ONLY** cover the individual component of the unit/item that may be defective. Replacement parts can be made available to a consumer through the original selling party, or an approved parts retailer. If this is not an option, contact our customer service department. **Item is covered under two year limited warranty from the date of purchase. If your purchase was after our 30-day grace period, payment information will be requested for shipping charges.**

## • Not Covered Under Warranty

The limited warranty will NOT cover cases of damages due to

1. Inadequate care and/or neglect
2. Environmental and/or natural elements
3. Immersion in water, unless specified
4. Improper Installation/Storage and/or Maintenance

*This warranty is void if the product has been damaged by accident, misuse, negligence, improper installation and/or modifications have occurred. This includes any and/or all defects arising out of freezing water damage, hard water damage, failure to keep the unit clean and free of harmful additives such as bleach, chlorine, etc.... which affects the paint and/or parts. This warranty also does not cover any additional charges or installation, removal, disposal and/or shipping costs or consequential damage associated with any warranty claim.*



## Owner's Manual

Item # ZEN882SLR



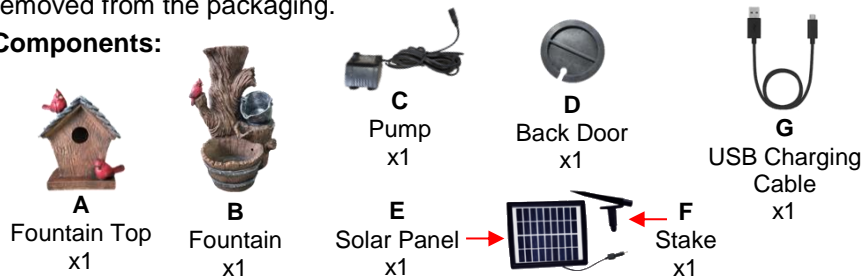
# Solar Cardinal Birdhouse Cascading Barrel Fountain



## Assembling and Using Your Product

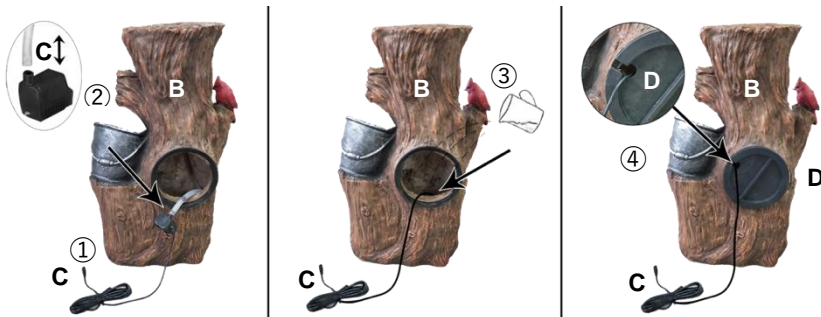
Unpack all components carefully. Please check to ensure all parts have been removed from the packaging.

### Components:

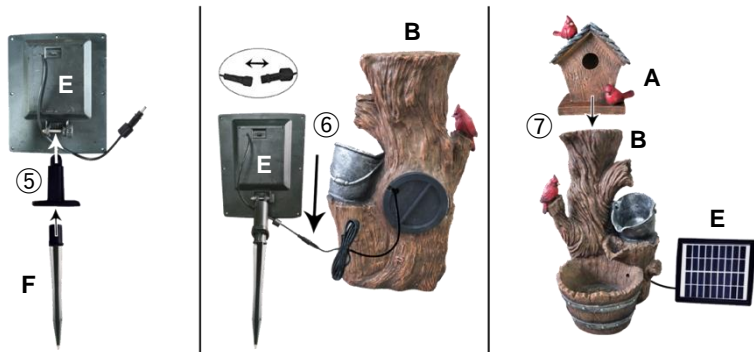


### Assembly:

1. Place the Fountain (B) on a smooth, level surface.
2. Pull the plastic tube through back opening and attach to the Pump (C). Place Pump (C) inside reservoir.
3. Fill with water. We recommend distilled water to prevent scale build-up.
4. Fit Back Door (D) into opening with pump cord tucked into notch and turn clockwise to secure.



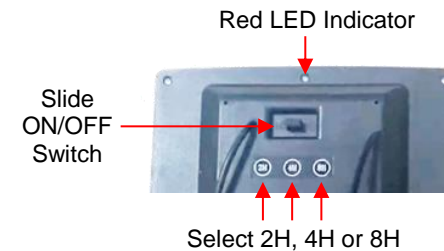
5. Assemble and attach Stake (F) to Solar Panel (E) and place where the solar panel will receive at least 6-8 hours of direct sunlight.
6. Plug the cord from the Solar Panel (E) into the Pump (C).
7. Fit the Fountain Top (A) on Fountain (B).



8. Congratulations. Your Fountain is assembled. Fully charge the Solar Panel (E) in direct sunlight for 6-8 hours or use the included USB Charging Cable (G). Set the Timer for either 2, 4 or 8 hours and enjoy!

### Set the Timer:

Slide the ON/OFF switch on the back of the Solar Panel (E) to the ON position. Press either the 2H, 4H or 8H option below the switch and when you see the red LED flash 3 times, the timer is set. The pump will run for the selected amount of time and automatically turn ON at the same time every day and run for the same amount of time.



### Trouble Shooting and Cautions

If you have any questions and/or problems, please contact the retail store where you purchased this fountain.

- **If your pump fails to run**
  - Check the pump discharge and tubing for any kinks and/or obstructions. Any buildup obstructing the water flow can be flushed with a garden hose
  - Check the rotor by removing the front cover and plate to access the impeller area. Turn the rotor and make sure that the rotor is not jammed or broken.
  - Ensure your solar panel is in direct sunlight and the batteries are getting charged.
- **If your pump "spews"**
  - Check the water level to make sure the pump is completely submerged and there is enough water in the basin to operate your fountain. Not having enough water will cause your pump to spew
- **If your pump is making abnormal loud noises**
  1. Carefully grip the impeller and gently pull the impeller/rotor assembly out of the pump housing.
  2. Rinse the impeller/rotor assembly and clean the cavity with clean water. If breakage or damage is found, contact your local retailer for part.
- **Fountain Care**

We recommend using Alpine Item PPL102's all-natural cleansing formula to eliminate foam, lime scale, and calcium buildup; fight mineral deposits; leave water crystal clear; help prevent staining; remove organic contaminants; and treat discolored water. This formula will help prevent pump damage due to hard water build up. For more information, please visit [www.alpine4u.com](http://www.alpine4u.com).
- **Caution**
  - Always unplug the pump from the solar panel before cleaning & handling.
  - Uses with clean water only, do not place the fountain in any other liquid.
  - Periodically change water & clean pump to keep free from micro-organisms.
  - Disconnect and store the unit in a dry place if not in use for extended time.
  - Do not lift, carry, or pull the pump by the power cord.
  - NEVER LET THE PUMP RUN DRY.