

SLIDING DOORS ASSEMBLY INSTRUCTIONS

IMPORTANT

Please read carefully



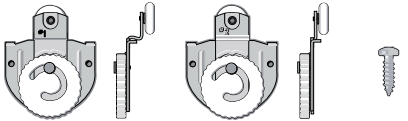

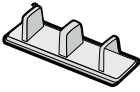
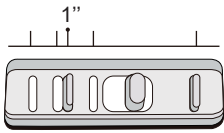
Protect your eyes when handling metal parts, wear safety goggles

Follow all steps in order and complete each step before starting the next step.

✉ Dooraftersale@gmail.com

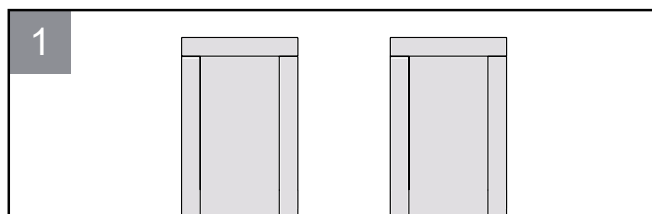


What's Included

Fascia  (x1)	Top Track  (x1) (x12)	Top Connectors  #1 (x2) #2 (x2) (x8)
Door Bumper  (x8) (x2)	Floor Guide  (x1)	 Place the plastic plug at this position

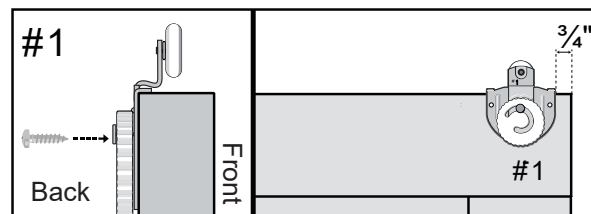
Installation Steps

Step 1

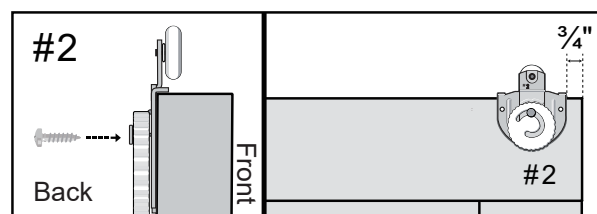


Two slabs are identical.

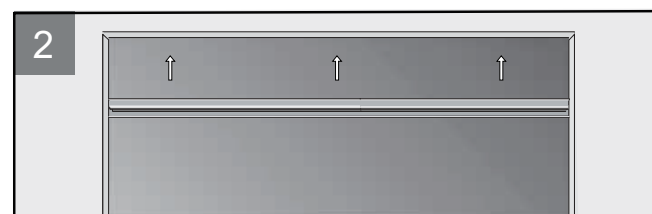
Step 1.1



Step 1.2

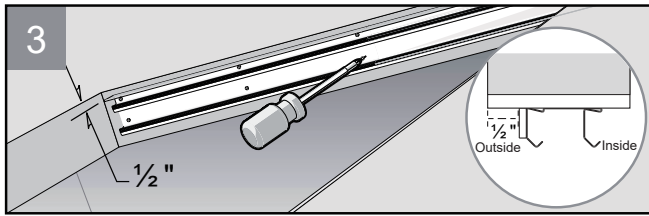


Step 2

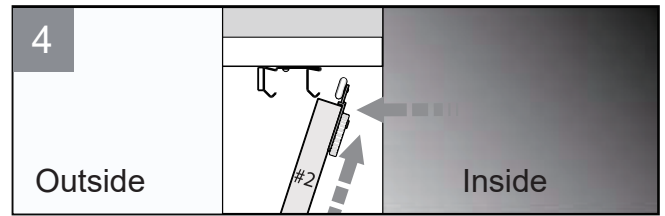


Installation Steps

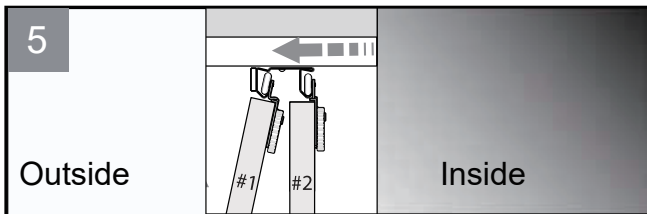
Step 3



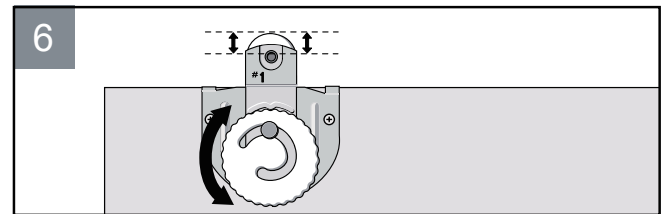
Step 4



Step 5

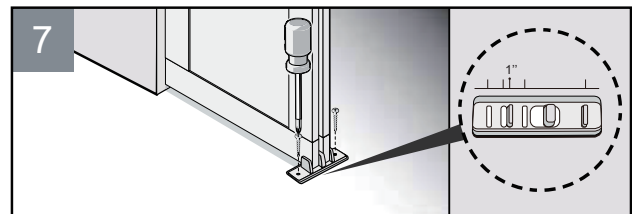


Step 6



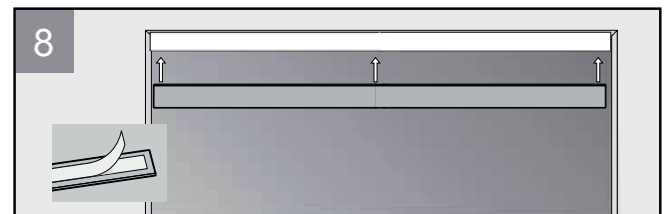
Rotate to adjust door up or down.

Step 7



Place the plastic plug at this position

Step 8



Adhere the Fascia to the track