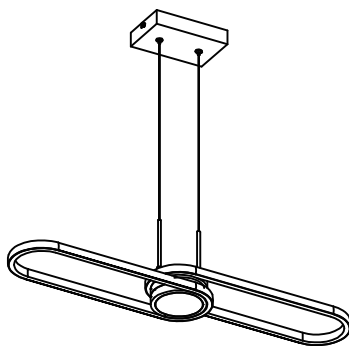
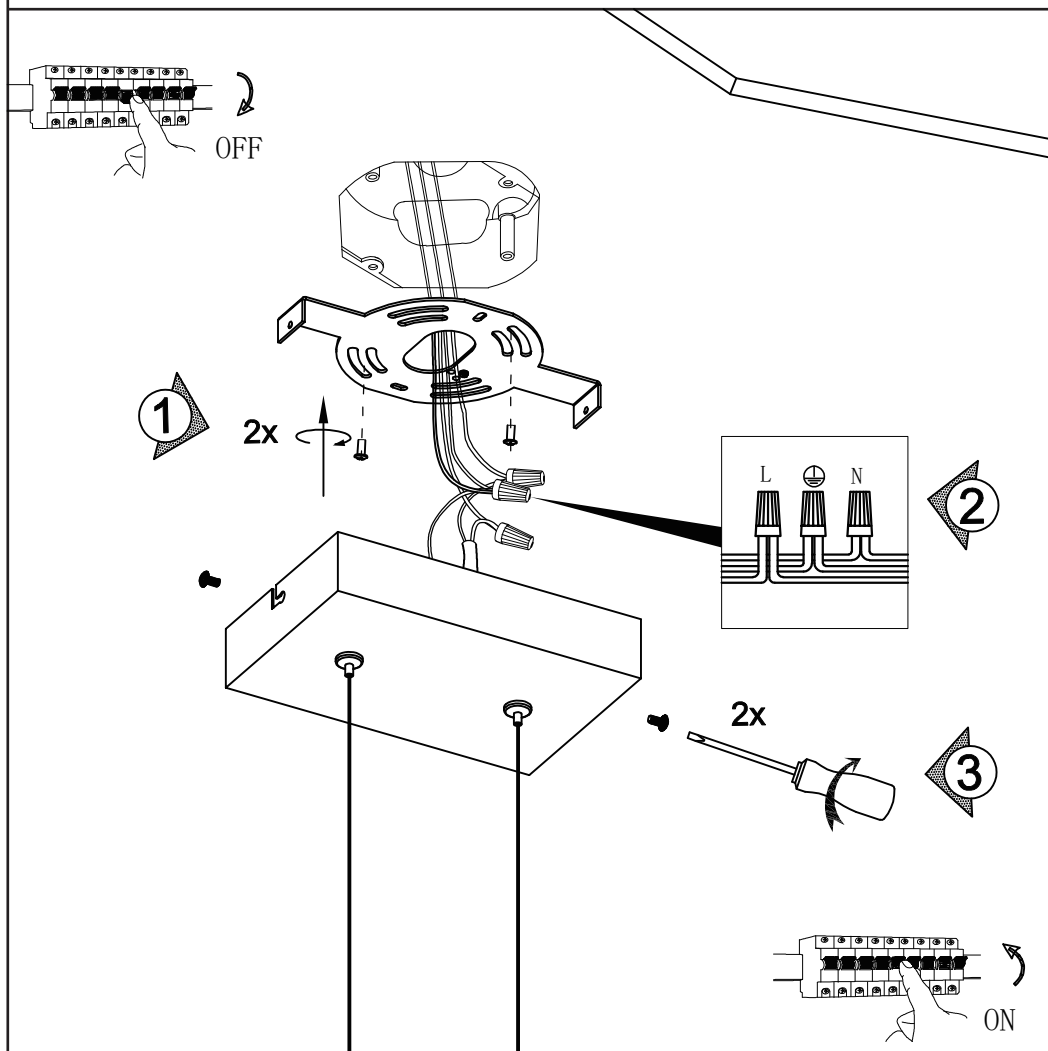


WF0023



WF0014



Installation Manual

Make sure the power is disconnected

1. Remove the wall plate and fix it on the wall.
2. Connect the wires, pay attention to the N and L wires.
3. Fix the base on the wall plate and tighten the screws on both sides.
4. Height adjustable as needed.

Remote control function introduction

1. on/off switch

2. Night Light Key

Short press to enter night light mode (approx. 10% brightness)

3. Brightness adjustable +

4. Brightness adjustable -

5. Color temperature switching

Actual sequence 4000K-6000K-3000K

6. Delay light off key

Press this button briefly to enter the delayed shutdown mode

(Luminaire blinks once and delays for 30 minutes before completely shutting down the output).

Pressing any other key while in time delay mode will clear the time delay mode.

7. Color temperature adjustable +

8. Color temperature adjustable -

9. Need Two AAA batteries (Battery not included)

