

1 Important Safeguards

1. READ ALL INSTRUCTIONS BEFORE USING

DANGER - To reduce the risk of electric shock:

1. Do not place or store this appliance in a location where it can fall or be pulled into a tub or sink.
2. Do not place in, or drop into water or other liquids.
3. Do not touch a product that has fallen into water. Unplug immediately.

WARNING - To reduce the risk of burns, electric shock, fire or injury.

1. Close supervision is necessary when this appliance is used by or is near infants, elders, or handicapped persons. Children should not be permitted to use or touch this appliance without adult supervision. Be sure to adjust the toilet seat's temperature for elders, handicapped persons, or people with sensitive skin.
2. Use this appliance only for its intended purpose as described in this manual. Do not use attachments not recommended by the manufacturer.
3. Do not operate this appliance if the cord is damaged or if the product is dropped into water.
4. Install the unit properly by following the installation procedure.
5. Only authorized persons can install or repair the unit. Do not attempt to service this appliance by yourself. Doing so will void the warranty.
6. Keep the cord away from heated surfaces.
7. Never drop or insert any objects into any opening or hose.
8. Do not use outdoors. Do not use aerosol or oxygen spray products on the unit.
9. Always follow the grounding instructions in this manual before plugging in the unit.

SAVE THESE INSTRUCTIONS

2 Cautions before installation

1. NOTE THE FOLLOWING IMPORTANT POINTS

1. Do not install in a location where water might be splashed on this appliance or in a location exposed to excessive moisture where condensation might form on the product's surface.
2. To avoid damage to electronic components due to high levels of humidity, provide adequate ventilation by opening a window and/or door when bathing.
3. Water supply should have a water pressure of 11.38 psi to 106.68 psi.
4. Connect the product to a pipe carrying potable water. Do not connect to an industrial water line or other water supplies that are not potable.
5. Cool the unit in the room before installation.
6. The thermal protector in the water tank may malfunction when transporting or storing warm water.
7. The rated power voltage is 120V AC, 60Hz.
8. Do not plug the unit in until installation is complete. It may result in malfunction.

2 Cautions before installation

2. WIRING REQUIREMENTS

1. Any other servicing should be performed by authorized service representatives.

2. GROUNDING INSTRUCTIONS

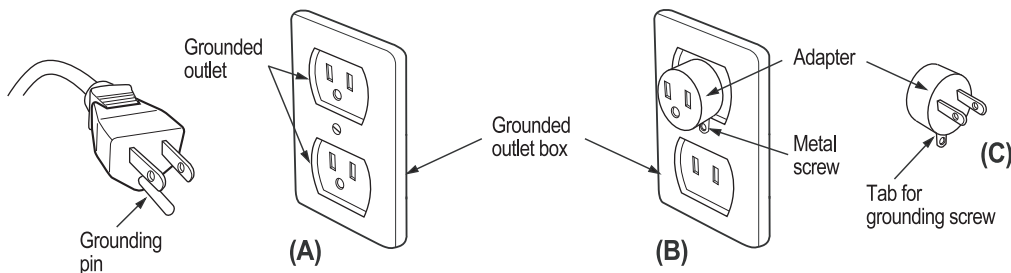
This product should be grounded. In the event of an electrical short circuit, grounding reduces the risk of electric shock by providing an escape wire for the electric current. This product is equipped with a cord having a grounding wire with a grounding plug. The plug must be plugged into an outlet that is properly installed and grounded.

DANGER-Improper use of the grounding plug can result in a risk of electric shock.

If the cord or plug is necessary to repair or needs to be replaced, do not connect the grounding wire to a flat blade terminal. The grounding wire can be identified by its insulated outer surface. It will either be colored green or will not contain yellow stripes.

Check with a qualified electrician or serviceman if you do not understand grounding instructions or if you do not know whether the product is properly grounded.

3. This product is for use on a nominal 120V circuit. It has a grounding plug that looks like the plug illustrated in sketch A. A temporary adapter, which looks like the adapter illustrated in sketches B and C, may be used to connect this plug to a 2-pole receptacle as shown in sketch B if a properly grounded outlet is not available. The temporary adapter should be used only until the properly grounded outlet (sketch A) can be installed by a qualified electrician. The green colored rigid ear, lug and the like extending from the adapter must be connected to a permanent ground such as a properly grounded outlet box cover. Whenever the adapter is used, it must be held in place by the screw.



4. If it is necessary to use an extension cord, use only a three wire extension cord that has a three-blade grounding plug, and a three-slot receptacle that will accept the plug on the product. Replace or repair a damaged cord.

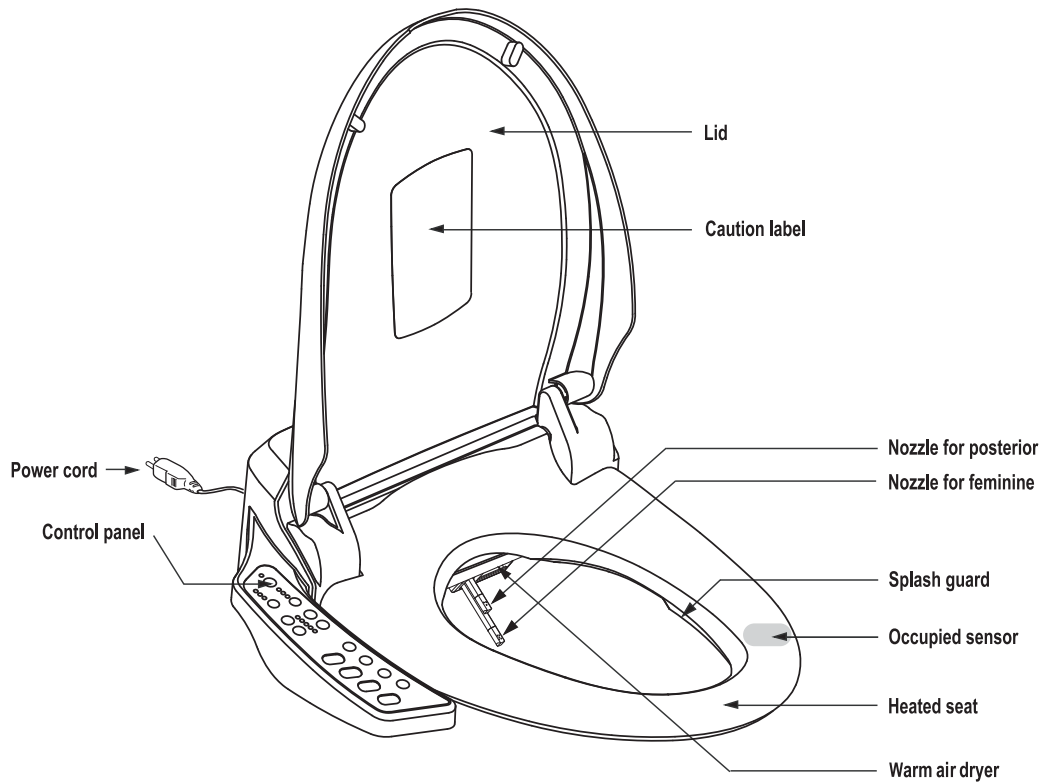
5. Remote control power : AAA(1.5V) , 3EA

CAUTION

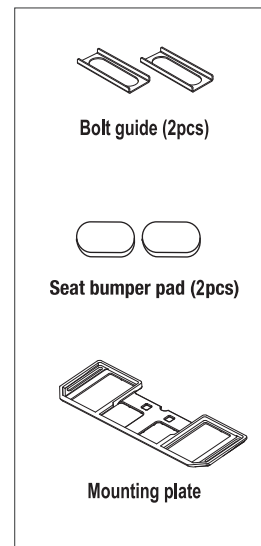
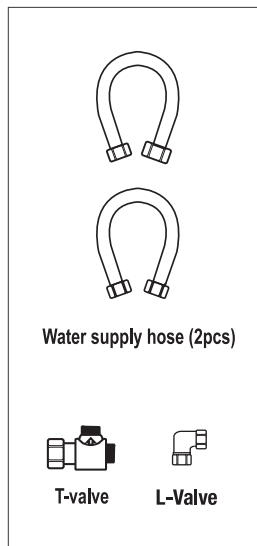
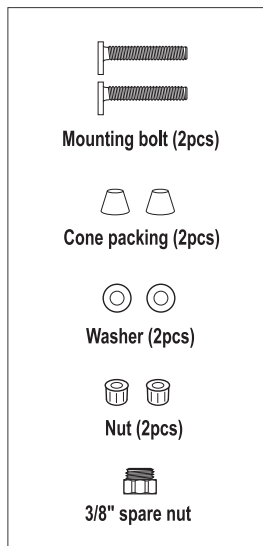
**RISK OF EXPLOSION TO BATTERY IF REPLACED BY AN INCORRECT TYPE.
DISPOSE OF USED BATTERIES ACCORDING TO THE INSTRUCTIONS.**

3 Identification

1. Main unit



2. Accessories



9 How to install



Do not plug in until installation is finished completely. Not doing so may damage the appliance.

※ If electric work is needed, please contact to the qualified electrician or serviceman only.

Remove the existing toilet lid and seat

1. Remove the nuts, washers and cone packings from the toilet seat mounting bolts in the back of the toilet.
2. Remove the toilet seat, lid and mounting bolts.
3. Keep them in case of need.

Balance Pads

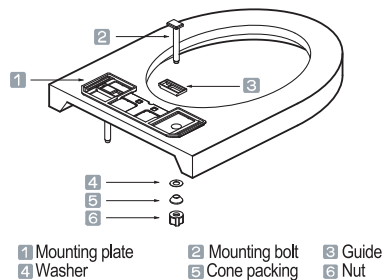
Depending on your toilet model, the toilet bowl may not be even and there could be a small gap on the front side of the bidet seat and toilet bowl. Two(2) white adhesive pads supplied with your installation kit to be used to balance seat. Affix adhesive pad to seat bumper located on the underside of the bidet seat to balance seat with toilet bowl.

Install the appliance

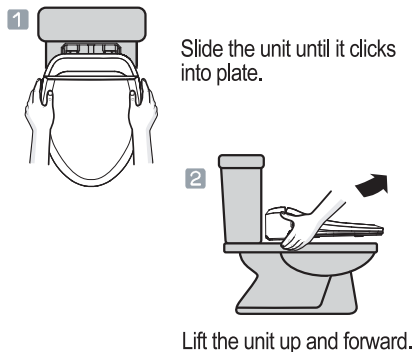
Installation

How to mount the plate

Place the plate and guides over each mounting hole. Insert the mounting bolts through the plate and mounting holes, and slide cone packings and washers onto the bolts.

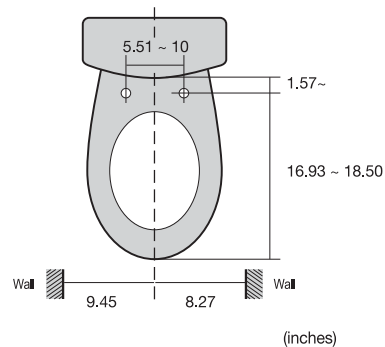


How to attach and detach the unit



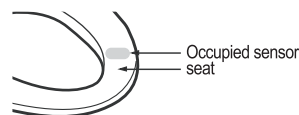
Toilet size (elongated & round front)

The toilet dimensions must be within those shown below. Do not install this appliance on a toilet that does not meet those dimensional requirements.

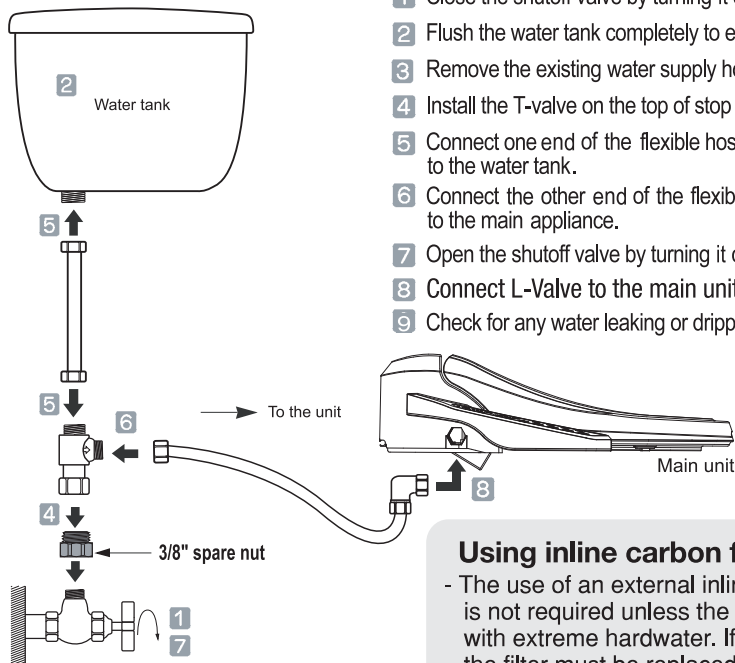


Occupied sensor

- This appliance is equipped with occupied sensor.
- Unit will not work unless seat is occupied.



Connecting the water hose



- 1 Close the shutoff valve by turning it clockwise.
- 2 Flush the water tank completely to empty.
- 3 Remove the existing water supply hose from the tank.
- 4 Install the T-valve on the top of stop valve.
- 5 Connect one end of the flexible hose from the T-valve to the water tank.
- 6 Connect the other end of the flexible hose from the T-valve to the main appliance.
- 7 Open the shutoff valve by turning it counter clockwise.
- 8 Connect L-Valve to the main unit.
- 9 Check for any water leaking or dripping.

Using inline carbon filter

- The use of an external inline carbon water filter is not required unless the unit is used in an area with extreme hardwater. If a carbon filter is used, the filter must be replaced every 6 months. Inline carbon filters can be purchased from any authorized Bio Bidet reseller.

Trial operation

1. Preparation

Plug the power cord into the outlet, and then the water tank will be filled with water in 2 minutes.

2. Checking all functions

Cover the toilet bowl using the sheet of plastic wrap on the unit to prevent the washing water from being sprayed out of the toilet.

Then check for all functions described in this manual.

3. There are possibilities of water coming out that remains in the unit while heating.

Check the following troubleshooting guide before calling in for service

| PROBLEM | POSSIBLE CAUSE | POSSIBLE SOLUTION |
|-----------------------------------------------|----------------------------------------------------------------------------------------------------------------------------------------------------------------------------------------------------------------------------------------------|----------------------------------------------------------------------------------------------------------------------------------------------------------------------------------------------------------------------------------------------------------------------------------------------------------------------------------------------------------------------------------------------------------------------------------------------------------------------------|
| Unit completely fails to work or power on | <ol style="list-style-type: none"> 1. Power outage 2. Unit is not plugged in 3. Faulty receptacle 4. Skin sensor is not activated | <ol style="list-style-type: none"> 1. Reset the GFI outlet 2. Plug the power cord in to a GFI outlet 3. Test another appliance in the outlet 4. Activate the skin sensor on the unit |
| Nozzle does not extend | <ol style="list-style-type: none"> 1. Remote control is not working 2. Nozzle is dirty 3. External bidet filter 4. Skin sensor is not activated 5. Seat riser is covering the skin sensor | <ol style="list-style-type: none"> 1. Replace the remote control batteries - try to operate the unit with the side control panel 2. Clean the nozzle 3. Remove the external bidet filter 4. Activate the skin sensor on the unit 5. The seat riser must go underneath the bidet seat |
| Low water pressure | <ol style="list-style-type: none"> 1. Clogged nozzle tip 2. Water pressure is set to low on remote | <ol style="list-style-type: none"> 1. Clean the nozzle tip 2. Raise the water pressure on the remote control |
| Seat is not heating | <ol style="list-style-type: none"> 1. Unit is set on Economy mode | <ol style="list-style-type: none"> 1. Turn off Economy mode 2. Unplug the unit for 10 sec. |
| Stops in the middle of use | <ol style="list-style-type: none"> 1. Washing or drying exceeded cycle time 2. Skin sensor lost contact 3. Clogged nozzle tip | <ol style="list-style-type: none"> 1. Press the wash or dry mode again 2. Activate the skin sensor with full skin contact through the entire cleansing period 3. Clean the nozzle tip |
| Water coming out from the nozzle unexpectedly | <ol style="list-style-type: none"> 1. Self-cleaning | <ol style="list-style-type: none"> 1. The unit will self-clean the nozzle before and after each use automatically |
| Water leaking continuously | <ol style="list-style-type: none"> 1. Leaking from hose connection at the unit 2. Leaking from T-valve 3. Leaking from behind or under the tank | <ol style="list-style-type: none"> 1. Check to make sure that all rubber washers are in place and do not over tighten the connection but it should be secure 2. Check to make sure that the rubber washer is in place with the flat side pointing up 3. Check that the drain is not opened on the unit if the unit continues to leak, immediately disconnect it from the water supply, drain the tank, and contact the BBC service center |