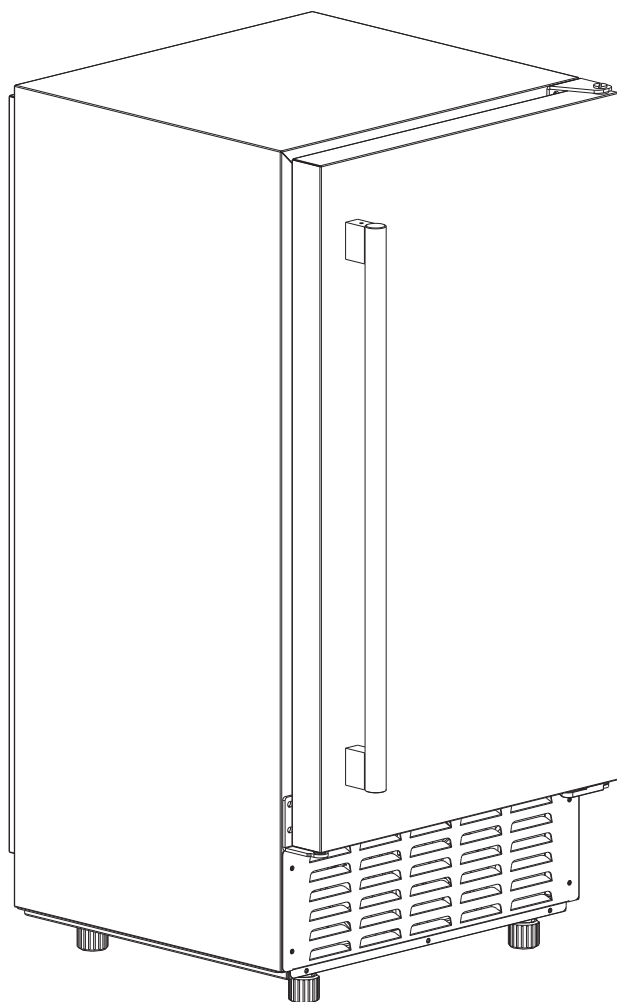


# Automatic Ice Maker

## Instruction Manual

SKU: CIM007-66SI-USZX

MODEL: HBZB-30N



[support@homyd.com](mailto:support@homyd.com)



1-833-632-0897



# Congratulations

Dear Customer:

Welcome to Our family. Thank you for purchasing one of our products.

Our goal is to provide you with superior service. If there is anything missing from or wrong with your order, or if you have any questions about using our product, PLEASE contact us.

Email: [support@homyd.com](mailto:support@homyd.com)

Our team is available 24/7 to address your questions, comments, and concerns. Your satisfaction is our ultimate goal, We want to make everything right so you'll share your positive experience with other shoppers.

If you experience any problems, please send an email to [support@homyd.com](mailto:support@homyd.com).

Our mission:

- \* To be the most trusted appliance brand.
- \* To create practical, compact appliances that better your life.

# Contents

Important Safety Instructions	01
Key Components and Structure	04
Control Panel and Display Overview	05
Installation Guide	07
Cleaning Your Ice Maker before Using For the First Time	11
Preparing Your Ice Maker For Long-Term Storage Or Relocation	12
Clean Your Ice Maker	13
FAQs	15
Troubleshooting	17
Specifications	19
Warranty Policy	20



# IMPORTANT SAFETY INSTRUCTIONS

1. When using electrical appliances, basic safety precautions should be followed to reduce the risk of fire, electric shock, and injury to persons or property. Read all instructions before using any appliance.
2. Use this appliance only for its intended purpose as described in this owner's manual. This ice-maker must be properly installed in accordance with the installation instructions before it is used.
3. This unit must be positioned so that the plug is accessible. **DO NOT** run cord over carpeting or other heat insulators. **DO NOT** cover the cord. Keep cord away from traffic areas, and do not submerge in water. No other appliance should be plugged into the same outlet, and be sure that the plug is fully inserted into the receptacle.
4. We do not recommend the use of an extension cord as it may overheat and cause a risk of fire. If you must use an extension cord, use a No.14AWG minimum size, rated no less than 1875 watts.
5. If the power supply cord is damaged, it must be replaced by the manufacturer or its service agent or a similarly qualified person to avoid a hazard.
6. Disconnect the power plug before cleaning or servicing the appliance. If for any reason this product requires maintenance, we strongly recommend that a certified technician perform the service.
7. Never unplug your unit by pulling on the power cord. Always grasp the plug firmly and pull straight out from the outlet.
8. **DO NOT** use your unit outdoors. Keep the unit away from direct sunlight.
9. Make sure there is at least 2 inches of space between the back of your unit and the wall and keep the front free. Keep ventilation opening in the appliance enclosure, or in the built-in structure, clear of obstruction.
10. **DO NOT** tip or slant the unit, which will cause excessive noise and make abnormally sized ice cubes. And more seriously, it may cause water to leak from the unit.
11. If the unit is brought in from outside in the winter, give it a few hours to warm up to room temperature before plugging it in.
12. **DO NOT** use liquids other than water to make ice cubes.
13. **DO NOT** clean your ice maker with flammable fluids. The fumes can create a fire hazard or explosion.

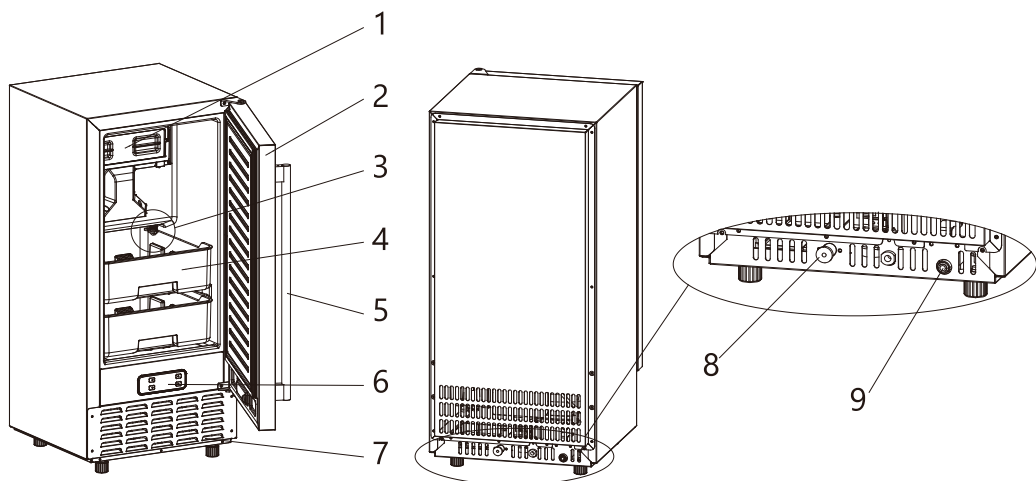
## **WARNINGS**

1. WARNING: This appliance must be earthed. Use the proper power source according to the nameplate.
2. WARNING: Keep ventilation openings, in the appliance enclosure or in the built-in structure, clear of obstruction.
3. WARNING: **DO NOT** damage the refrigerant circuit.
4. WARNING: This appliance is not intended for use by persons (including children) with reduced physical, or mental capabilities, or lack of experience and knowledge, unless they have been given supervision or instruction concerning the use of the appliance by a person responsible for their safety.
5. WARNING: Children should be supervised to ensure that they do not play with the appliance.
6. WARNING: This appliance must be earthed; use the 110-120V/60Hz earthed power supply.
7. WARNING: **DO NOT** store explosive substances such as aerosol cans with a flammable propellant in this appliance.
8. DANGER- Risk of Fire or Explosion. Flammable Refrigerant Used. **DO NOT** use a mechanical device to defrost the ice maker. **DO NOT** puncture refrigerant tubing.
9. CAUTION- Risk of Fire or Explosion. Flammable Refrigerant Used. Consult repair manual/ owner's guide before attempting to install or service this product. All safety precautions must be followed.
10. CAUTION- Risk of Fire or Explosion. Dispose of property in accordance with federal or local regulations. Flammable refrigerant used.
11. CAUTION- Risk of Fire or Explosion. Due to puncture of refrigerant tubing; Follow handling instructions carefully. Flammable refrigerant used.
12. The ice maker should be installed in accordance with the safety standard for refrigeration systems ASHRAE15. The ice maker shall not be installed in corridors or hallways of public buildings.
13. If the unit requires maintenance, replacing with like components and servicing shall be done by factory authorized service personnel so as to minimize the risk of possible ignition due to incorrect parts or improper service.

14. WARNING: Keep ventilation openings, in the appliance enclosure or in the built-in structure, clear of obstruction.
15. WARNING: This appliance is intended to be used in household and similar applications.
16. To avoid a hazard due to instability of the the appliance, it must be placed on an even, flat surface.

# KEY COMPONENTS AND STRUCTURE

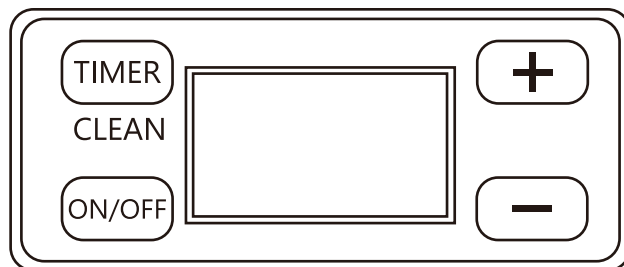
- ① Reservoir
- ② Door
- ③ Drain Plug
- ④ Ice Bin
- ⑤ Handle
- ⑥ Control Panel
- ⑦ Air outlet
- ⑧ Water Draining Port  
Plugged with a cap. When you install the machine, unplug the cap and connect the grey drain pipe.
- ⑨ Water inlet port for water supply  
Use to connect the water supply pipe.



## Accessories

- 1 x Grey Water Drain Pipe (2 meters long)
- 1 x White Water Supply Pipe ( $\Phi 6.35\text{mm} \times 3\text{m}$ )
- 1 x Water Quick Connector (4 Ways to 2 Ways)
- 1 x Rubber Gasket 2 x Blue Hose Clamps 1 x Ice Scoop
- 1 x Water Reservoir Sealing Gasket (replacement)

# CONTROL PANEL AND DISPLAY OVERVIEW



## "TIMER/CLEAN" Button

Press Once: Access the Timer Setting program.

Press and Hold (5+ Seconds): In standby mode, start the Cleaning program.

## "ON/OFF" Button

Press once to turn on the machine when it is off.

Press once to turn off the machine when it is making ice or running in cleaning mode.







If a timer is set, press once to cancel the timer setting.

## "+" and "-" Buttons

Adjust Timer Delay: Press to increase or decrease by 1 hour per press.

Switch Temperature Units: Press and hold the "+" buttons for 5 seconds to toggle between Fahrenheit (°F) and Celsius (°C).

## LCD Display Guide

1	2	3	4
			
			
8	7	6	5

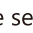
### 1. Environmental Temperature

- The panel shows the environmental temperature in Fahrenheit (displayed as "F").The environmental temperature can't switch.

### 2. Ice-Making and Deicing Symbol

- When the symbol rotates, the machine is making ice.
- When the symbol keep light, the ice bin is full, and the machine is stopping the process.

### 3. Automatic Self-Cleaning Symbol

- Default cleaning time is 15 minutes. When the machine is stand by, Hold the TIMER/CLEAN button for more than 5 seconds to start the self-cleaning program. And the  symbol rotates, and the countdown begins (e.g., 15M).

### 4. Power On/Off Symbol

- The symbol lights up when the machine is on. If it flashes, the machine is in standby mode.

### 5. Error Code Display

- E1: Ice-making malfunction.
- E2: Ambient temperature sensor fails when the symbol is always on. Or the ice full probe fails when the symbol flashes.

### 6. Water Flow and Water Shortage Symbol

- A flashing arrow indicates water is flowing into the machine.
- A steady symbol indicates a water shortage.

### 7. Ice Full Alarm

- Alerts when the ice bin is full. Timely removing ice resumes ice-making; prolonged inactivity stops ice-making and melts the ice to extend product lifespan.
- If F is displayed alone, it means that the infrared detects that the ice is full.
- If the ice bucket is displayed alone, it means that the probe detects that the ice bin is full.
- If both are displayed at the same time, it means that both the infrared and the probe detect that the ice bin is full.

## 8. Settings Display

- **H (Timer):** 1-24H. In standby, press Timer and "+" to set the start delay (e.g., "1H" = starts in 1 hour). During ice-making, press Timer and "+" to set the stop delay (e.g., "1H" = stops in 1 hour).

# INSTALLATION GUIDE

## 1. Setup the Ice Maker

### A. Unpack and Inspect

Remove all exterior and interior packaging. Confirm all accessories are included: instruction manual, ice scoop, white water inlet pipe, 4-way to 2-way water quick connector, water draining pipe, etc. If anything is missing, contact our customer service. (For Customer Service Support call: 1-833-632-0897 email: support@homyd.com)

### B. Prepare the Ice Maker

Remove any tape securing the door, inner cabinet, and ice scoop. Clean the inner cabinet and ice scoop with a damp cloth.

### C. Position the Ice Maker

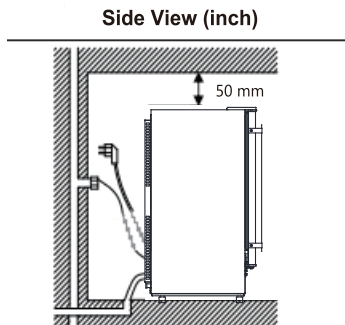
Place the unit on a level, flat surface away from direct sunlight and heat sources (e.g., stove, furnace, radiator). Ensure a clearance of at least **25 cm (10 inches)** at the air outlet and **allow 5 cm (2 inches)** between the left/right sides and the wall.

### D. Allow Refrigerant to Settle

If the unit was tipped during shipping or transportation, let it sit upright for **24 hours** to allow the refrigerant to settle before plugging it in.

### E. Plug Accessibility

Position the appliance so that the plug is easily accessible.



## TIPS

1. This ice maker is not designed for outdoor use. Maintain the room and inlet water temperature as specified to ensure optimal performance.
2. Ensure unobstructed ventilation at the front of the unit, with at least **25cm (10 inches)** of clearance. Allow **5 cm (2 inches)** of space at the back, top, and sides for proper air circulation. DO NOT place any objects on top of the ice maker.
3. Follow the recommended spacing dimensions for adequate ventilation and to allow the unit to be pulled forward for servicing.
4. The ideal ambient temperature is between 50°F and 90°F. Operating outside this range may affect performance or ice-making efficiency. This unit must be installed in an area protected from the elements, such as wind, rain, water spray, or drips.
5. A continuous water supply with a pressure of 0.04-0.6 Mpa is required. The water temperature should be between 41°F and 77°F for best results.

## 2. Install the Handle

### A. Install the Screws

Open the accessories supply and locate the two screws, then screw into the screw holes.

### B. Align the Handle

Align the door handle with the screw hole.

### C. Tighten the Screws

Find the hexagonal screw and tighten it in the specified position.

## 3. Connecting the Water Supply Hose

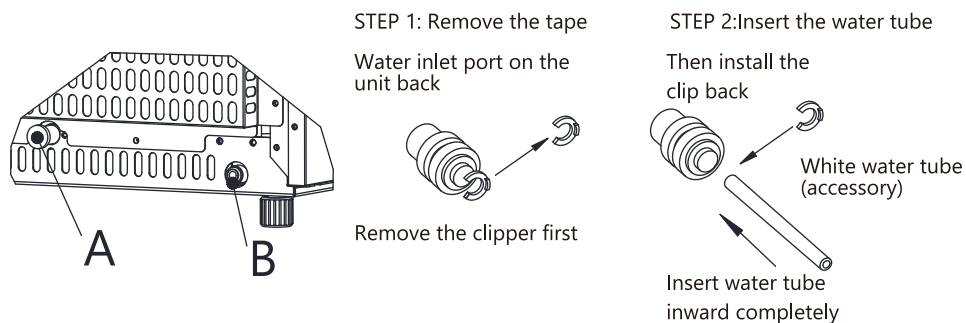
### A. Prepare the Water Inlet Port

Locate the water inlet port for water supply at the back of the unit (marked as "B" in the illustration). Remove the clipper attached to the port by pressing the outer circle of the port with one hand.

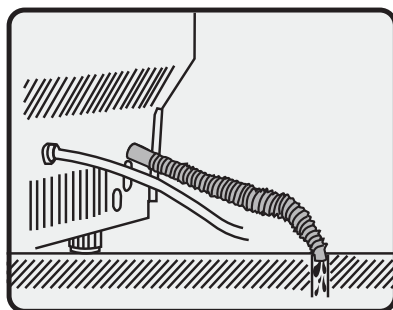


## B. Attach the Water Hose

Insert one end of the white water hose firmly into the water inlet port, ensuring it is secure. Reattach the clipper to lock the hose in place. Your water supply connection is now complete.



## 4.Connecting the Water Drain Pipe



### A. Prepare the Water Drainage Port

Locate the black-colored drainage cap (marked as "A" in the illustration). Remove it carefully.

\*Please ensure the drain pipe lower than the water drainage port.

### B. Attach the Drain Pipe

Connect the provided grey drainage pipe to the exposed drainage port. Ensure the other end of the pipe is securely connected to your main water drainage system.

## 5.Connecting the Water Hose to the Faucet

### A. Install the Quick-Connector

Attach the supplied quick-connector to the water faucet by screwing it on tightly.

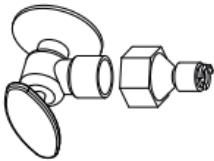
### B. Connect the Water Hose

Remove the clipper from the quick-connector. Insert the free end of the water supply hose into the quick-connector port until it fits securely. Reattach the clipper to lock the connection in place.

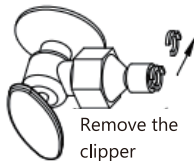
Important: Ensure the water pressure of the main supply system is between **0.04 MPa and 0.6 MPa** for proper operation.

\*The drain pipes must **all** be lower than the drain outlet, and the length of the drain pipes can be appropriately cut according to usage.

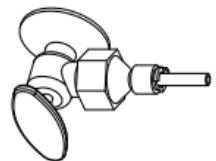
STEP 1: Quick-connector and the water faucet



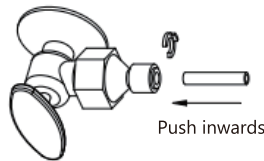
step 2: Screw the quick-connector on the water faucet by the screw thread, and remove the clipper



STEP 4: Install back the clipper



STEP 3: Insert the waterhose completely Push inwards



# CLEANING YOUR ICE MAKER BEFORE USING FOR THE FIRST TIME

\* We highly recommend using our cleaning solution for product maintenance.

## Initial Cleaning

Use a diluted detergent, warm water, and a soft cloth to clean the ice maker. Thoroughly clean all inner parts that come into contact with water.

## Draining and Rinsing

Pull the water drainpipe of the water reservoir (indicated as "3" in the above illustration) to drain the clean water from the reservoir.

Clean the inner ice-storing cabinet and all inner parts until they are completely clean.

Drain the water from the water drain port located at the back of the unit (indicated as "8" in the above illustration).

## Reassembly

Reinstall the water drain plug of the water reservoir and the cap of the unit's water drain port. Failure to do so may result in the unit not making ice properly.

## Discard the First Batch of Ice

After cleaning, it is recommended to discard the ice cubes made during the first 10 minutes of the ice-making cycle.

## Final Step

Dry the ice maker's interior and exterior with a clean, soft cloth.

# PREPARING YOUR ICE MAKER FOR LONG-TERM STORAGE OR RELOCATION

**If your ice maker will not be used for an extended period or if it needs to be moved to a different location, it's essential to prepare it correctly. Follow these steps:**

## Step 1: Drain All Water

**Remove All Ice:** Empty the ice bin. Wait 2 hours for the ice on the evaporator to fully melt.

**Power Off:** Unplug the ice maker from the power source.

**Turn Off Water Supply:** Shut off the water supply to the ice maker.

**Disconnect Water Line:** Disconnect the water line connected to the ice maker.

**Drain Water Tank:** Pull out the water drain plug from the water reservoir, marked as "3" in the illustration above, to drain the water from the water reservoir.

**Drain Water Pump:** Drain any remaining water from the water pump and drain plug.

**Leave Door Open:** Prop the door open to allow for air circulation and to prevent mold.

## Step 2: Clean and Maintain

**Unplug Before Cleaning:** Always unplug the ice maker before cleaning.

**Avoid Harsh Chemicals:** Please use a specialized ice machine cleaner for the best performance.

**Avoid using harsh chemicals,** including alcohol, vinegar, or other acids, as they can damage the evaporator and shorten the life of the unit's life.

**Clean Condenser Coil:** Clean the condenser coil **at least once a year** to ensure optimal performance.

**Deep Clean Before Storage:** If the ice maker has been sitting idle for a long time, thoroughly clean it before using it again.

## Step 3: Store Properly

**Dry Completely:** Ensure the ice maker is completely dry before storing.

**Cover:** Use a plastic bag to cover the ice maker, protecting it from dust.

## Daily Use Tips

**Ice Only:** Use the ice storage bin exclusively for ice. Avoid storing other items like bottles or cans.

**Mild Detergent:** When cleaning the exterior, use a mild detergent and warm water. Avoid abrasive cleaners. Never use abrasive cleaning agents.

**Stainless Steel Care:** If your ice maker has stainless steel components, clean them with a stainless steel cleaner and a soft cloth.

# CLEAN YOUR ICE MAKER

## General Cleaning

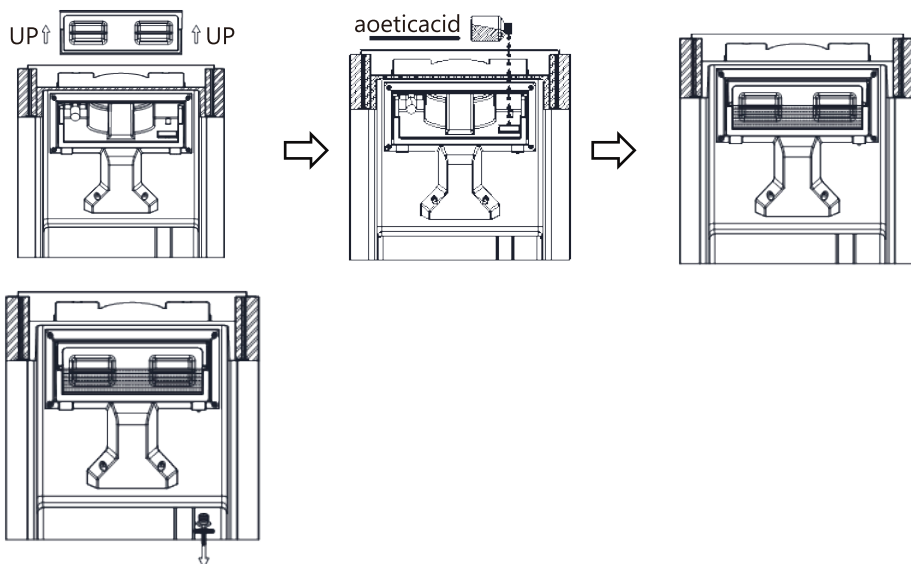
1. Clean the door and cabinet using our cleaning solution for optimal maintenance.
2. Avoid using solvent-based or abrasive cleaners. We strongly recommend using our cleaning solution for product maintenance.
3. Use a soft sponge to clean, then rinse thoroughly with clean water.
4. Wipe dry with a soft, clean towel to prevent water spots.
5. Stainless steel models can discolor when exposed to chlorine gas.

## Cleaning the Ice Storage Bin

- 1. Disconnect power:** Unplug the ice maker from the power source.
- 2. Clean the bin:** Wipe down the inside of the bin with our cleaning solution.
- 3. Rinse:** Thoroughly rinse the bin with clean, cold water.
- 4. Reconnect power:** Plug the ice maker back in.

## Cleaning the Ice Making Parts

- 1. Disconnect power:** Unplug the ice maker.
2. Remove the drain plug: Wait until all the water has completely drained. Once draining is finished, securely reinstall the drain plug securely back into place.
- 3. Clean the water reservoir and other parts:** Use both thumbs to open the transparent window. Thoroughly clean all the inner parts that come into contact with water. Appropriate amounts of acetic acid solution have been added at the marked locations. After cleaning, carefully reinstall the transparent windows. To prevent water leakage, ensure it is properly and securely fitted.
- 4. Start the clean program:** Press the cleaning button on the operation panel for more than 5 seconds to start the cleaning program, and the cleaning will end after 15 minutes. Pull the drain plug to drain the cleaned water in the water reservoir. Prepare for a second round of cleaning to drain out the remaining acetic acid solution. Start the cleaning program, which will be completed in approximately 15 minutes. Once finished, press the power button to begin the ice-making process.



## Weekly Cleaning

Clean the ice shovel, ice bin, water reservoir, and run the self-cleaning program to clean the surface of the evaporator every week. Operate the cleaning program.

## Bi-Monthly Cleaning

**Every 2 months**, deep clean all parts that come into contact with water or ice, including the ice storage bin, water reservoir, door, evaporator, water pump, and silicone tube. It is recommended to have a professional technician perform this cleaning.

### Note:

- 1. Avoid harsh chemicals: DO NOT** use harsh chemicals or abrasive cleaners on any part of the ice maker. These can damage the surface and affect the taste of the ice.
- 2. Regular cleaning:** For optimal performance, clean your ice maker regularly.
- 3.** By following these simple steps, you can keep your ice maker clean and hygienic, ensuring that you always have a supply of fresh, clean ice.

## CORRECT DISPOSAL OF THIS PRODUCT



When the unit is taken out of service, its disposal and the handling of its materials must comply with national regulations.

# FAQs

## 1. How often should I clean my ice maker?

To ensure optimal performance, clean your ice maker at least once a week, depending on usage. Regular cleaning prevents scale buildup, which can block the pump and cause the machine to malfunction.

## 2. How do I clean the ice maker?

### Daily Cleaning

- In standby mode, press and hold the "TIMER/CLEAN" button for 5 seconds to activate the Cleaning Mode.
- After draining the water, return the drainage plug (on the right side of the water tank) to its normal position. Repeat cleaning if needed.

### Deep Cleaning

Turn off the water supply and drain the water box. Dilute the acetic acid and pour it into the water box. Then start the cleaning mode. After cleaning is complete, remove the drain plug to empty the water box, refill it with clean water, and run the cleaning mode twice. After that, you can resume ice production, but please discard the ice produced in the first 15 minutes.

## 3. Can I put milk and juice into the reservoir to make ice cubes?

Using liquids other than water to make ice cubes is not recommended. Our research has found that the particles in milk and beverages can easily block the pump and reduce its service life. Also, the protein in milk is prone to calcification, which chemically reacts with the PU water pipe inside the machine, causing it to break and making the product unable to continue working.

## 4. Why do my ice cubes melt quickly?

The ice maker does not have a refrigeration function. High ambient temperatures, especially in summer, can accelerate melting.

- Close the door to maintain the internal.
- Place a fan near the machine to disperse heat.
- For long-term storage, transfer ice cubes to a refrigerator/freezer.

## 5. Why does the ice cubes have a plastic smell?

The ice cube itself has no taste. If you think there is a plastic smell, try to clean the inside of the machine with our cleaning solution, then run a few cycles, and finally rinse with distilled water. Discard the first batch of ice to ensure no cleaning solution residue remains.

## **6.Why is water leaking from the machine?**

It may be that the tube inside the machine came loose during transport. You can remove the back cover and reconnect the tube yourself. If you are unsure how to do this, please contact our team. We will refer you to a professional video to help you solve the problem.

## **7.Does it make ice automatically and stop when the ice bin is full?**

Our ice maker is equipped with a sensor that automatically stops ice production when the ice bin is full.

## **8.Why is the ice maker white instead of stainless steel?**

The machine is made of stainless steel but has a white protective film to prevent scratches and fingerprints. If you prefer the stainless steel appearance, simply peel off the protective film.

## **9.Why is there water flowing but not making ice?**



If the ambient temperature and the refrigeration pipe are in good working order, it is likely that the refrigerant within the machine has experienced a leak. Please provide us with a video or photo of the issue to assist you further. The after-sales will be happy to offer guidance and support.

## **10.Why does the machine make crushed ice, not nugget ice?**

Try Resetting the machine: Unplug it for 2 hours, then plug it back in. Contact the after-sales if these steps don't resolve the issue.



# TROUBLESHOOTING

Problem	Possible Cause	Solution
"  " indicator is on.	No water supply.	Check the main water supply pressure or check whether the water supply hose is blocked, adding the water pressure or cleaning the hose if necessary.
"  " indicator is on.	The upper ice tank is full of ice cubes.	Remove the ice cube or switch the empty ice tank from the bottom to the top.
<b>E1</b>	Ambient temperature or water temperature in inner tank is too high.	Please run the ice maker below 90°F ambient and pour colder water into the tank.
	Refrigerant liquid leakage	Press the ON/OFF button twice and restart the ice making program; if this problem persists, please contact support@homyd.com.
	Motor cover is broken	
	Pipe in the cooling system is blocked	
<b>E2</b>	The environmental temperature sensor is damaged	Please contact support@homyd.com.
Making Ice too slowly	Hot air outlet is blocked by something	Hot air outlet must have at least 10 inches of ventilation distance.
	Water temperature in inner tank is too high.	Water temperature requirement between 41-77°F.
	Refrigeration system malfunction	Please contact support@homyd.com.
Plastic pieces in the water/ice	Internal parts damaged	Please contact support@homyd.com.

Water leakage	Drain pipe is not in place correctly	Our machine uses gravity drainage. We recommend connecting the drainage pipe to a floor drain. This way, the drainage pipe will slope downward, ensuring water can drain correctly and not remain inside the machine. Alternatively, you could elevate the machine so its drainage outlet is higher than your home's drainage outlet.
	Pipe joint in the appliance may be loose	Please contact support@homyd.com.
	The seal has reached service life	Please contact support@homyd.com.
Ice-making cycle is normal, but no ice forms.	Room temperature or water temperature in inner tank is too high	Ideal room temperature is below 90 °F. Ideal water temperature is 41-77 °F.
	Refrigerant leak in cooling system	Please contact support@homyd.com.
	Pipe in the cooling system is blocked	Please contact support@homyd.com.
Ice maker noise	Ice Maker Compressor Noise: Quiet when self-cleaning	Please contact support@homyd.com.

# SPECIFICATIONS

Specification	Value
SKU	CIM007-66SI-USZX
Model	HBZB-30N
Refrigerant	R290 1.34Oz/38g
Voltage/Frequency	115V/60HZ
Rated Ice-Making Power/Current	3.6A
Product Dimensions	15.1*16.2*32.7in
Net/Gross Weight	60/68.6lbs

# WARRANTY POLICY

## 1-Year Limited Warranty

**Toll-Free Call: 1-833-632-0897 Mon to Fri, 9AM - 6PM ( ET )**

**Email: [support@homyd.com](mailto:support@homyd.com)**

Thank you for choosing our products. We provide a 1-Year Limited Warranty for items purchased through our official channels. Please kindly note that this warranty is for the original purchaser and is non-transferable. If you purchase from an unauthorized seller, please get in touch with them directly.

We are committed to ensuring that our products are free from defects in materials and workmanship for one year from the date of purchase, as long as they are used under normal household conditions and maintained according to the User Manual. **Please note that certain conditions and exclusions apply:**

Should you find any defects in the original product or its non-wearable parts, we will be happy to repair or replace the item within one year of purchase. If a replacement is necessary, the warranty period will continue from the original purchase date. Please be aware that normal wear and tear or damage due to mishandling, accidents, or failure to follow instructions are not covered. However, replacement parts are available for purchase. Feel free to contact us for more information.

Please also note that this warranty does not cover damage caused by exposure to liquids or foreign materials, unauthorized repairs or modifications, or use in commercial or non-household environments (unless specified for commercial use).

If you encounter any issues with your product, we are here to help. You can reach us by phone at **1-833-632-0897(US)** or email us at **[support@homyd.com](mailto:support@homyd.com)**. For certain product categories, we also offer the option to upgrade your warranty to our VIP service.

Our friendly phone support team is available from **Monday to Friday, 9 AM - 6 PM (ET)**. To assist you more efficiently, please have your product with you when you call. We aim to respond to emails within 24 business hours. If you don't receive a reply after sending us an email within this time frame, kindly check your spam folder to ensure you don't miss our response.

In addition to the one-year warranty, we also offer lifetime technical support. After the warranty period, service is still available at an additional cost. Please don't hesitate to contact us with any questions or concerns.



SKU:CIM007-66SI-USZX

MODEL:HBZB-30N

