



Laurel Mountain

HUNTLAND 40" x 38" x 78" Zero Threshold Shower

Drain	Model #
R	LM3637BF3PR064
L	LM3637BF3PL064

Features

- Barrier free, easy entry threshold.
- Patented, pre-leveled base with ArmorCore reinforcement, and textured finish floor.
- Includes collapsible dam with end caps, stainless steel curtain rod, weighted shower curtain, chrome plated brass drain, 2 stainless steel grab bars, and HDPE fold-up seat.
- Simple, easy 3 piece installation from front or rear
- Full wood reinforced walls for extra strength that enables bars to be located to fit your individual needs.
- Premium, durable applied acrylic/fiberglass construction
- Attractive and easy to clean
- Meets or exceeds UPC, IPC, ANSI Z124.1, NAHB, & SBC
- Made in the USA with a lifetime limited warranty



Components Included (Field Installed)

★ Stainless Steel Curtain Rod



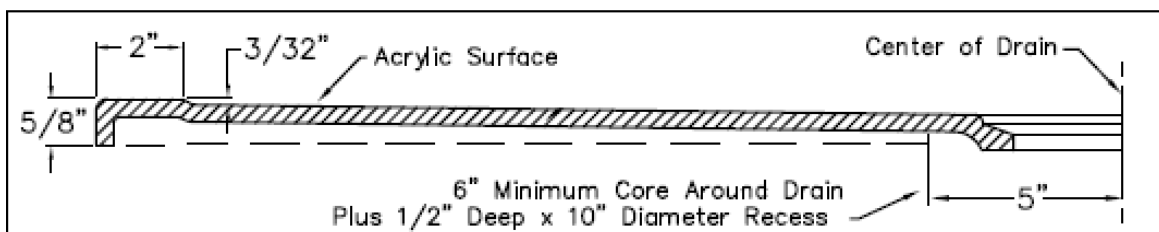
★ Stainless Steel Grab Bars



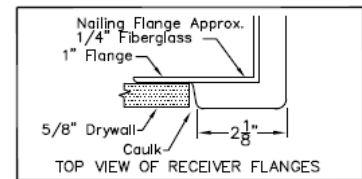
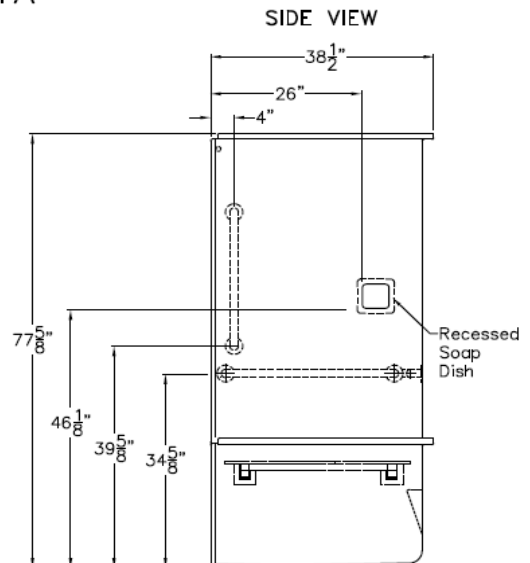
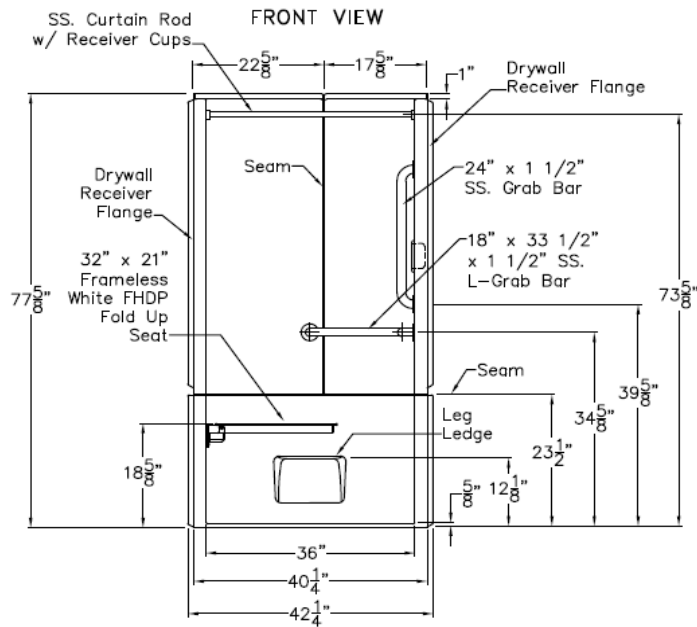
★ Chrome Plated Brass Drain



THRESHOLD



SUBMITTAL DATA



Transfer Shower Stall

The enclosure shall be Laurel Mountain Whirlpools Model LM 3637 BF three piece right or left. The surface shall be of a finished surface of sanitary grade applied acrylic.

The unit shall have the outside dimensions of: 40 1/4\" x 38 1/2\" x 77 3/8\".

The unit shall meet ANSI Z124.1-2, ADA, ANSI A117.1, and Home Innovation Research Lab.

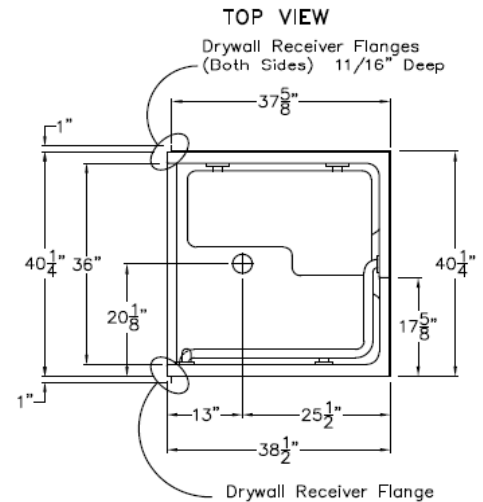
The enclosure shall be equipped with the following installed accessories

- 1) One 18\" x 33 1/2\" x 1 1/2\" diameter stainless steel L-grab bar, 2) One 24\" x 1 1/2\" diameter stainless steel grab bar vertical on the valve wall, both with 1 1/2\" statute clearance, secured from the rear with stainless steel bolts, and 3\" x 3\" x 11 gauge metal mounting plate, 3) Three piece sectional design, 4) 32\" x 21\" frameless white HDPE fold up seat, 5) One inch diameter stainless steel curtain rod with receiver cups, 6) Stainless steel recessed soap dish in the valve wall, 7) Drywall receiver flanges on each side, 8) leg ledge, 9) Tri-Cell backing, 10) 5/8\" threshold.

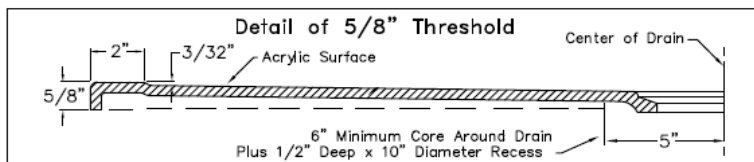
THIS UNIT FEATURES THE OUTSIDE DIMENSIONS OF 40 1/4\" OF OVERALL WIDTH. THIS DOES NOT ALLOW FOR FULL ENCLOSURE OF THE BOLTS THAT ARE USED TO SECURE THE BARS AND SEAT IN PLACE. THE BOLT AND NUT COMBINATION SHOULD NOT PROTRUDE ANY MORE THAN 3/4\" ON EITHER SIDE.

THIS SHOULD NOT CREATE ANY TYPE OF INSTALLATION PROBLEMS EXCEPT FOR A DRY WALL ENCLOSED FIRE WALL INSTALLATION AREA THAT WOULD NOT ALLOW FOR ANY VARIATIONS. IN A STANDARD STUD/OPENING INSTALLATION THE EXTENSION OF THE HARDWARE SHOULD NOT CAUSE ANY TYPE OF PROBLEM.

NOTE: THIS UNIT WILL NOT ACCEPT A DOOR!



DUE TO THE NATURE OF THE MATERIALS
DIMENSIONS MAY VARY ± 1/2"



LAUREL MOUNTAIN

Drawing#: LM 3637 BF 3P

Date: 5-18-07

Revised: 1-13-19

Huntland

LAUREL MOUNTAIN WHIRLPOOLS
2418 Wilmington Road Suite C New Castle Pa. 16105
1 (800) 930 0050 - FAX 1-(800) 930 0051