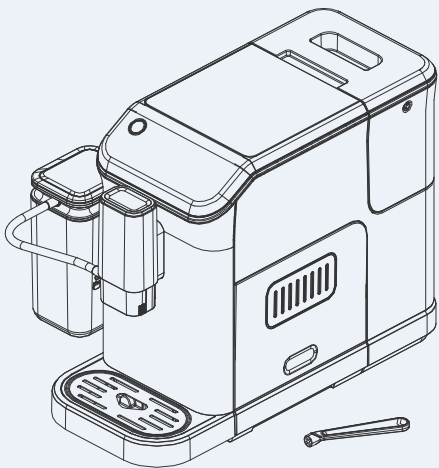


Fully Automatic Coffee Machine

QUICK GUIDE



1-833-632-0897

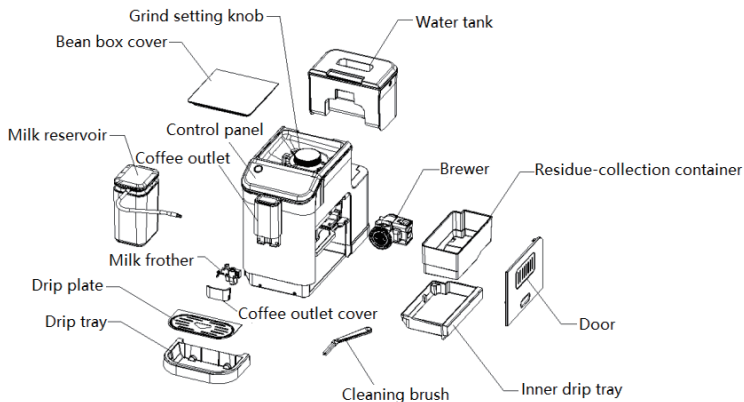


support @homyd.com

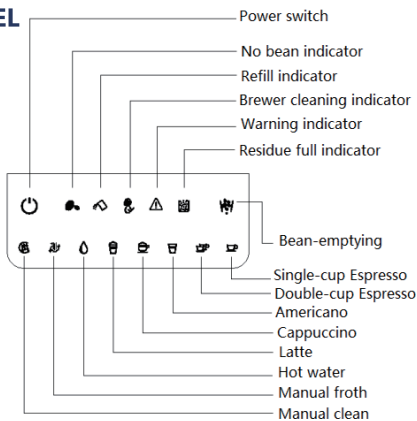
SKU:

CM003-20SI-USZX

WHAT'S IN THE BOX



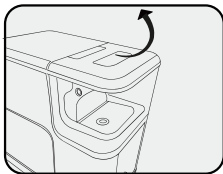
CONTROL PANEL



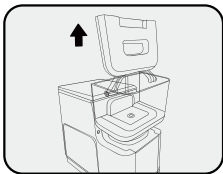
OPERATING & MAINTAINING

1. Adding Water

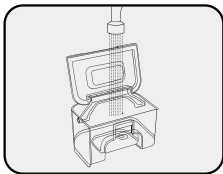
1. Adding Water



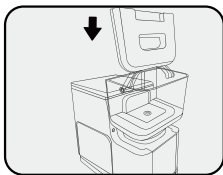
2. Lift the water tank



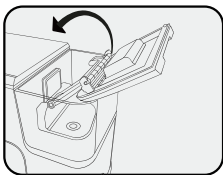
3. Clean the water tank and fill it with drinking water



4. Insert the water tank into the machine

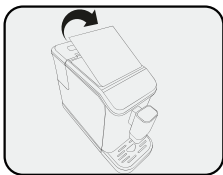


5. Close the water tank lid

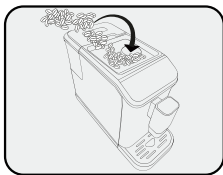


2. Adding Coffee Beans

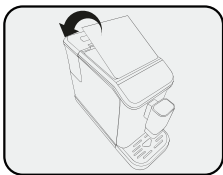
1. Open the bean hopper lid



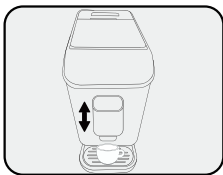
2. Add coffee beans



3. Close the bean hopper lid

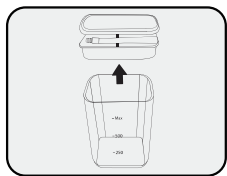


4. Place a cup and adjust the coffee spout height

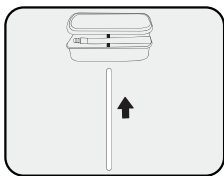


3. Milk Container & Tube: Operation & Cleaning

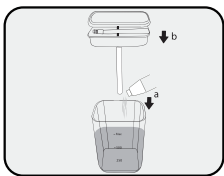
1. Remove the milk container lid



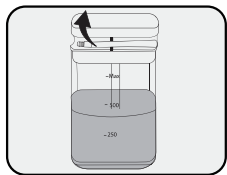
2. Attach the milk suction tube



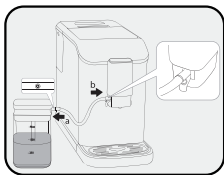
3. Pour in milk



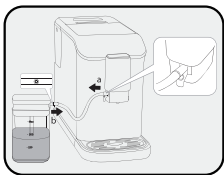
4. Remove the milk tube



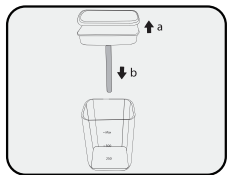
5. Connect the milk tube between the milk container lid and the milk frother



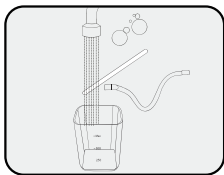
6. Pull out the milk tube



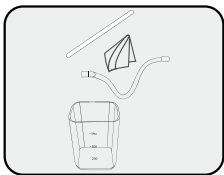
7. Open the milk container lid















8. Rinse under the faucet



9. Dry and store after cleaning

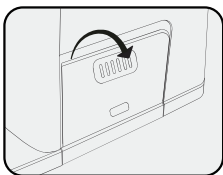


4. Power On & Preheat

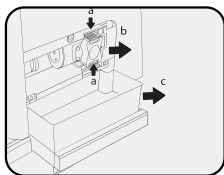
1. Connect to rated voltage and press the rear On/Off switch.
2. Long-press the Power switch  for $\geq 0.3s$ until its indicator flashes (self-check starts).
3. Place a container under the coffee outlet.
4. Manual Clean indicator  stays on + Power indicator  flashes → enters preheating (coffee/steam boilers) + auto-clean.
5. Coffee boiler preheating: the indicators of Single-cup Espresso “”, Double-cup Espresso “”, Americano “” and Bean-emptying “” illuminate solidly, and the appliance can be operated normally.
6. Steam boiler preheating: Cappuccino  , Latte  , Hot Water  , Manual Froth  , Manual Clean  indicators flash (functions locked). Once ready, these indicators stay on (steam functions operable).

5. Brew System & Milk Frother: Disassembly & Cleaning

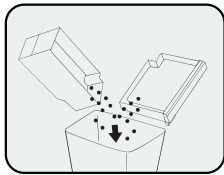
1. Open the brewing door



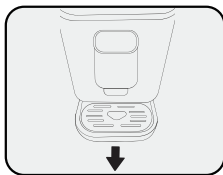
2. Remove the brew group and dregs container



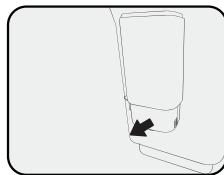
3. Empty coffee grounds into the trash



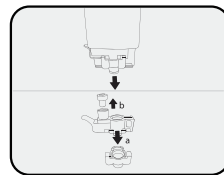
4. Remove the drip tray



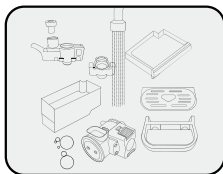
5. Remove the coffee spout cover



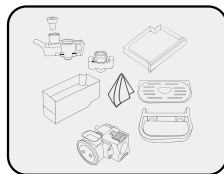
6. Remove the milk frother cover



7. Rinse under the faucet

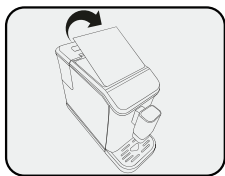


8. Dry after cleaning

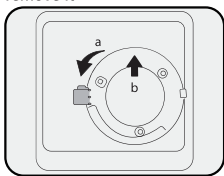


6. Grinder Assembly: Cleaning & Reassembly

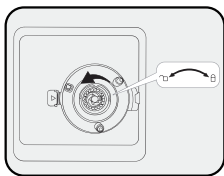
1. Open the bean hopper lid



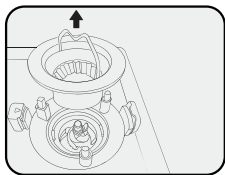
2. Rotate the bean grinding knob counterclockwise and remove it



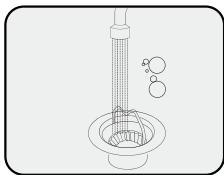
3. Rotate the blade disc counterclockwise



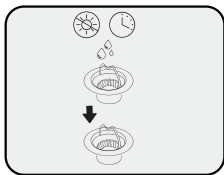
4. Remove the blade disc



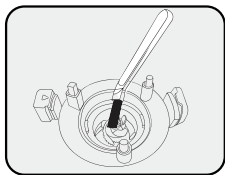
5. Clean the blade disc



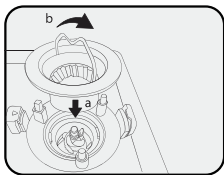
6. Air-dry the blade disc



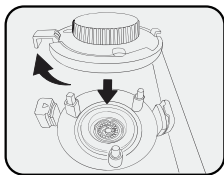
7. Use a cleaning brush to remove coffee grounds from the conical burr





8. Reinsert the blade disc into the machine



9. Reattach the bean grinding knob

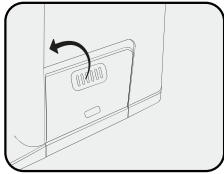
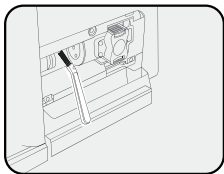
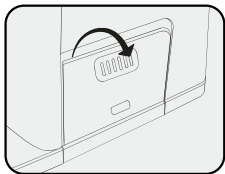


7. Brew Head Cleaning

1. After long-pressing the Clean  and Double Cup  buttons, open the brew door.

2. Clean the brew head with a cleaning brush.

3. Close the brew door.

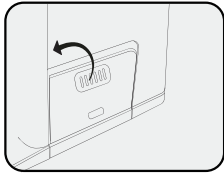
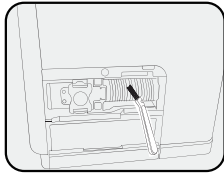
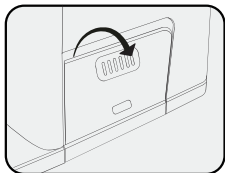


8. Brew Chamber Cleaning

1. After long-pressing the Clean + Double Cup buttons, open the brew door.

2. Clean the internal brew chamber with a cleaning brush.

3. Close the brew door.



NOTE

1. Prior to use, verify the completeness of all accessories and the undamaged condition of the unit. Next, familiarize yourself with all parts and their respective functions. We advise retaining the original packaging materials for potential future use.
2. The appliance will perform cleaning automatically to make preparation for operation when it is started each time.
3. This appliance is a multifunctional coffee machine, it has the functions of "Single-cup Espresso", "Double-cup Espresso", "Americano", "Cappuccino", "Latte", "Hot water", "Manual froth", "Manual clean" and "Bean-emptying". Detailed brewing procedures for these functions are outlined in the Operation section of INSTRUCTION MANUAL; follow the instructions therein for optimal results.
4. Use espresso-specific beans and maintain proper milk temperature (5–10 °C) for best results.

HINTS FOR GREAT-TASTING COFFEE

1. A clean coffee machine is essential for making tasty coffee. It is necessary to clean the coffee machine as specified in the "**CLEANING AND MAINTENANCE**"-section regularly. Always use fresh, room-temperature water when brewing coffee.
2. Store unused ground coffee at a cool and dry place. After a new bag of ground coffee is unpacked, reseal it tightly and store it in a refrigerator to maintain its freshness.

FAQs

? Why do two indicators flash together (e.g., “Single-cup Espresso” + Warning)?

A: Likely a component error. Restart the machine; if unresolved, contact service.

? Why does coffee drip slowly or in drops?

A: The grind is too fine. Turn the grind setting knob counterclockwise to coarsen it.

? Why is milk foam too large or spraying?

A: Use cold milk (5–10 C, protein $\geq 3\%$) suitable for frothing. Clean the milk frother if dirty.

? Why does the machine prompt to empty the residue container when it's not full?

A: The counter isn't reset. Empty/clean the container/brew group with the machine ON; the counter resets when powered off.

? Why is the machine making loud noise?

A: Slight operational noise is normal. If abnormal, lubricate the brew system or contact service.

Please refer to the product manual for more detailed information on:



usage



cleaning



maintenance



troubleshooting



support@homyd.com



1-833-632-0897

SKU:
CM003-20SI-USZX

