

APP Connecting Instruction

1. App download

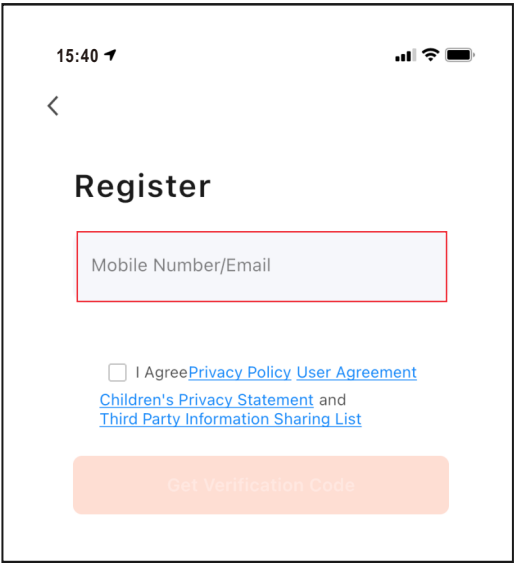
- Download "Tuya Smart" from the app store.
- Scan the QR code.
- Turn on the "GPS" from your mobile device.

Note: make sure your mobile phone is well connected to the nearest WIFI signal.



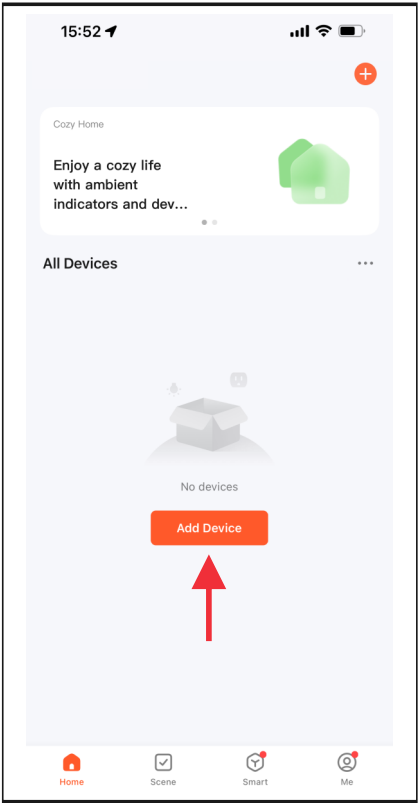
2. Login

- Register with your email ID or Mobile phone number as the user name.
- Setup your account password.



3. Add device

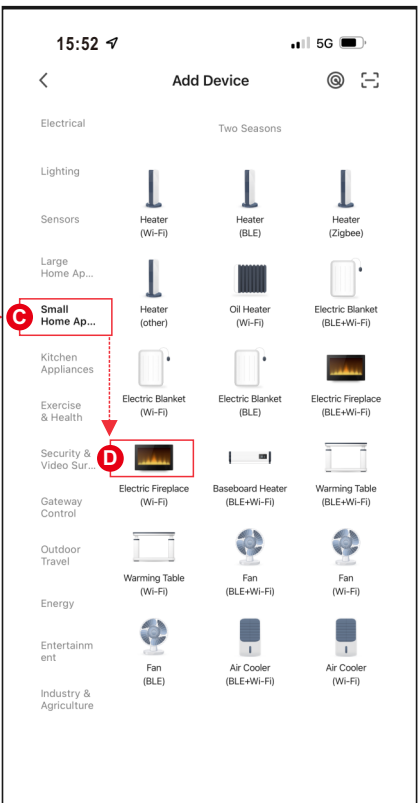
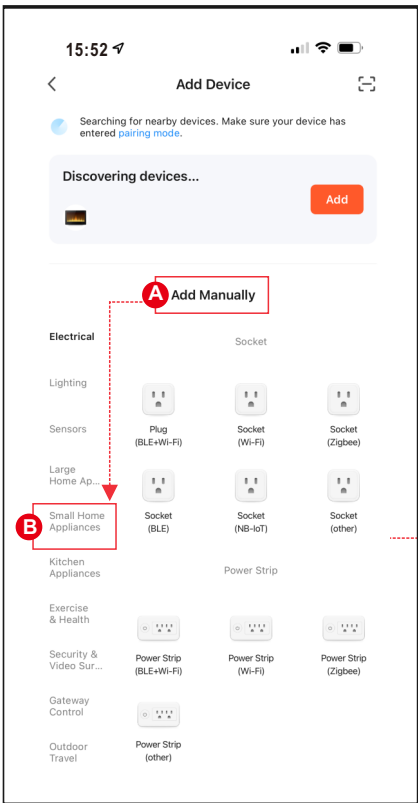
After account is created, log into account and select the "Add Device" button.




3. Add device - Continued

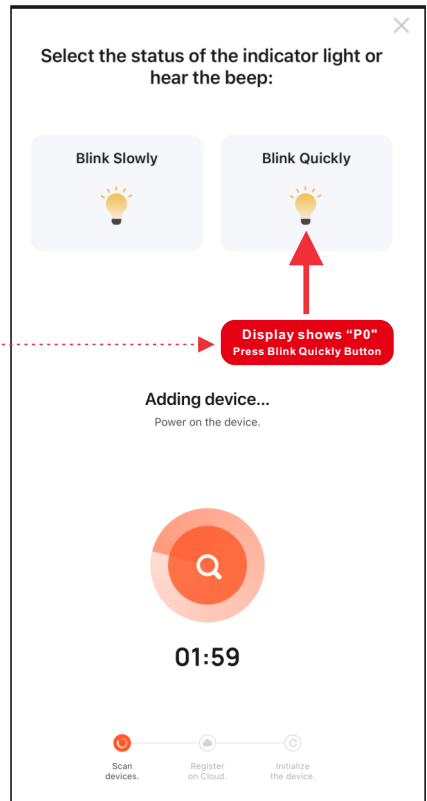
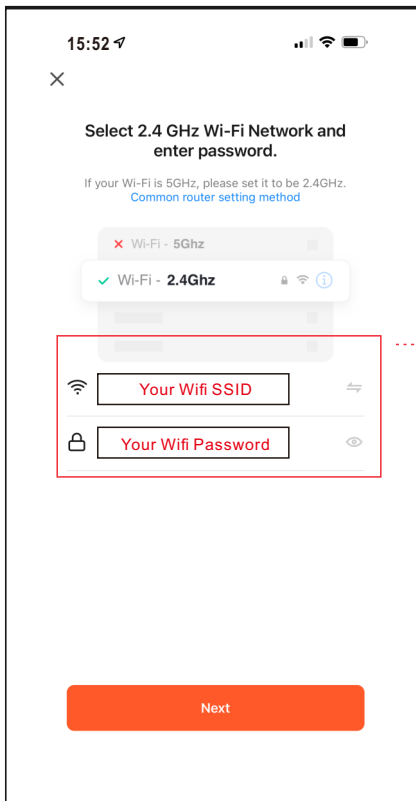
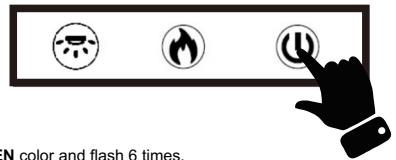
There are three methods to add your Aerus Fireplace.

- Method 1: Add Manually on "P0" mode. Please follow below step A,B,C,D.
- Method 1: Add Manually on "P1" mode. Please follow below step A,B,C,D.
- Method 3: Add by Bluetooth. (Open Bluetooth on your mobile phone before adding)




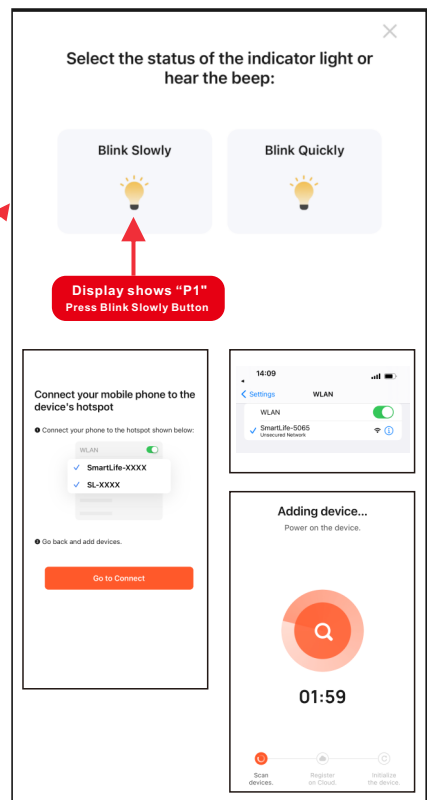
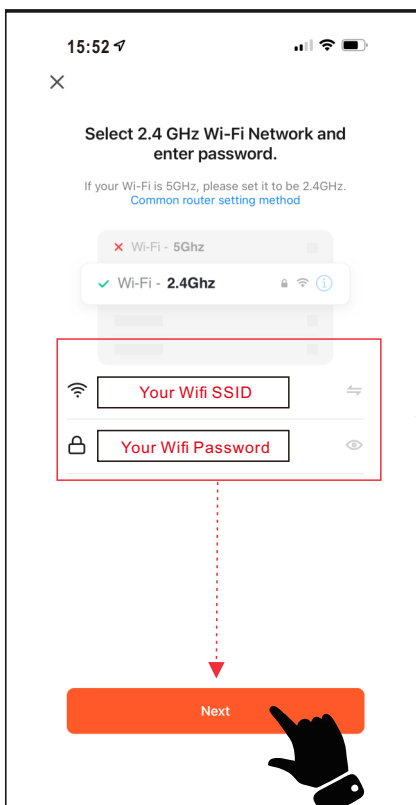
4. Connecting method 1 - (P0)

- Press & hold  from remote control or control panel till display on control panel shows “P0”.
- Enter the WIFI name and password, then press “Next” button for pairing.
- Press the **Blink Quickly** button for “P0”, device being added.
- When complete, display on control panel shows “P4”, LED Ember-light shows **GREEN** color and flash 6 times.




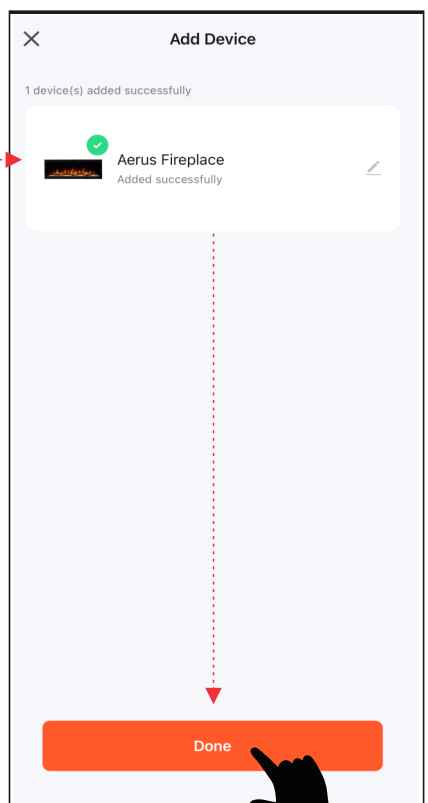
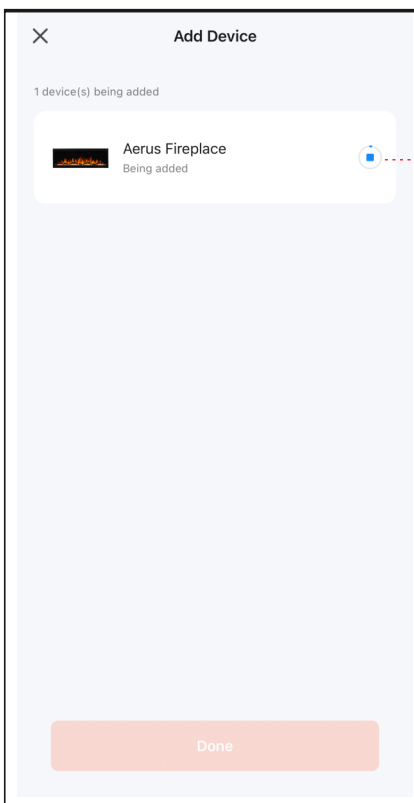
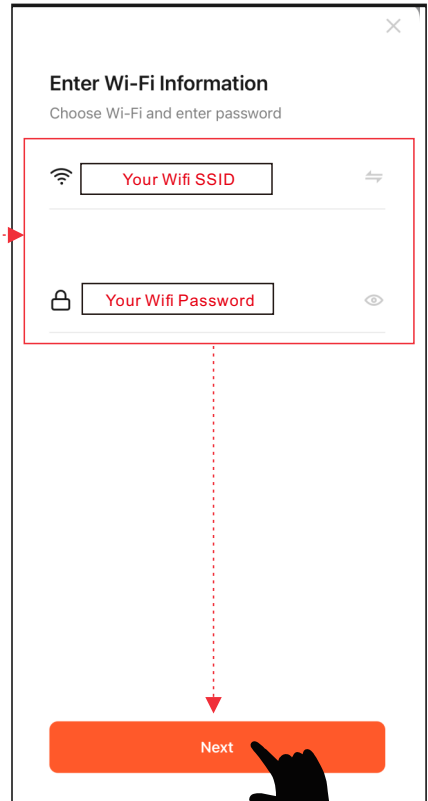
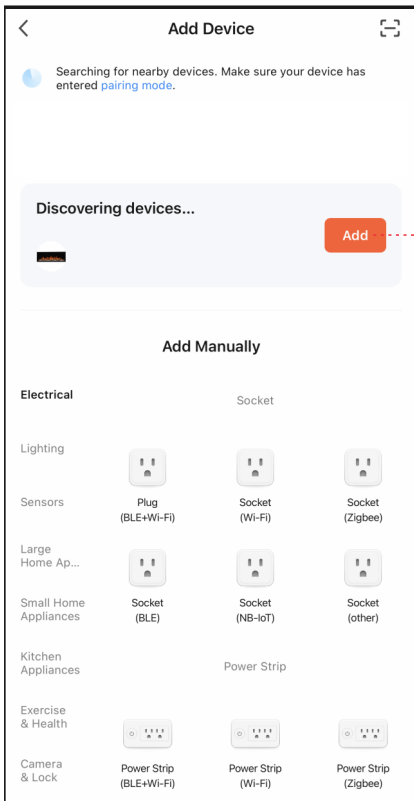
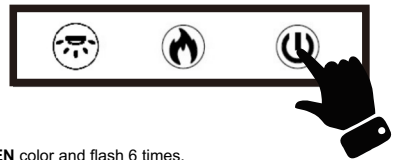
4. Connecting method 2 - (P1)

- Press & hold  from remote control or control panel till display on control panel shows “P1”.
- Enter the WIFI name and password, then press “Next” button for pairing.
- Press the **Blink Slowly** button for “P1”, go to connect your mobile phone to the device's hotspot.
- Select device's hotspot (**SmartLife-xxxx**), then back to device. Device being added.
- When complete, display on control panel shows “P4”, LED Ember-light shows **GREEN** color and flash 6 times.



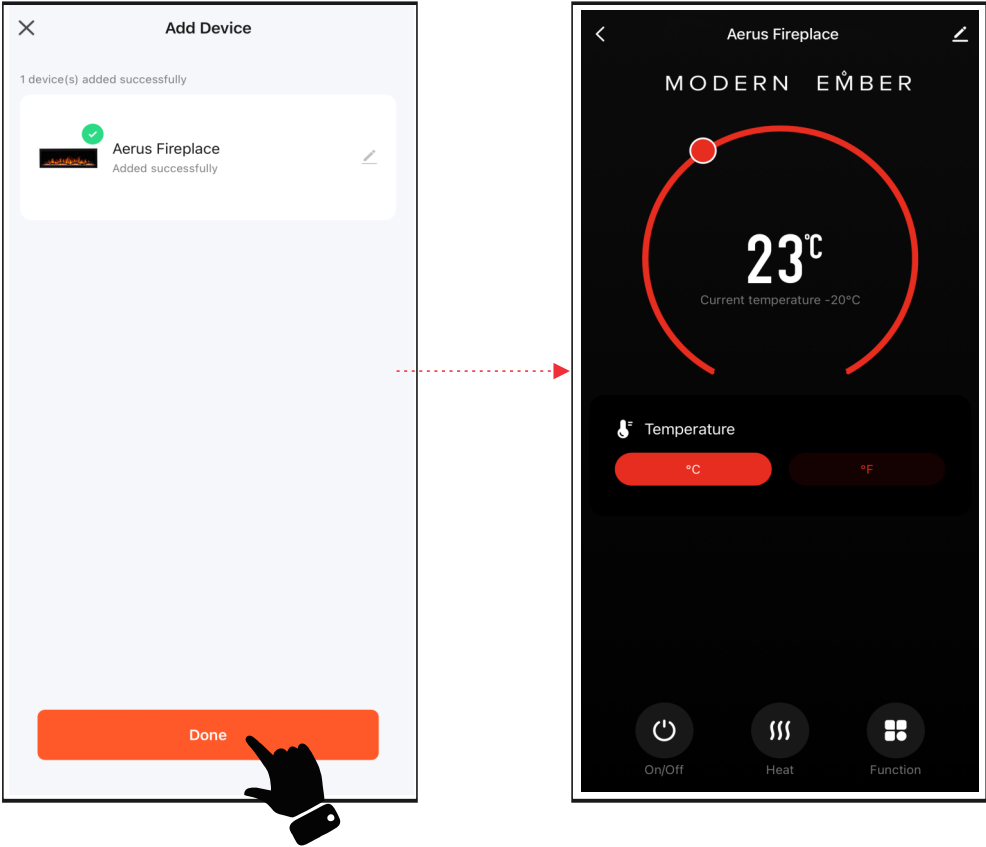
4. Connecting method 3 - (Bluetooth)

- Press & hold  from remote control or control panel till display on control panel shows **"P0"**.
- Press the **Add** button when you see the device named **"Aerus Fireplace"**.
- Enter the WIFI name and password, then press "Next" button for pairing.
- When complete, display on control panel shows **"P4"**,LED Ember-light shows **GREEN** color and flash 6 times.



5.Complete

● Press Done to complete.



APP Operating Instruction

