

FloorLyft ULTRA



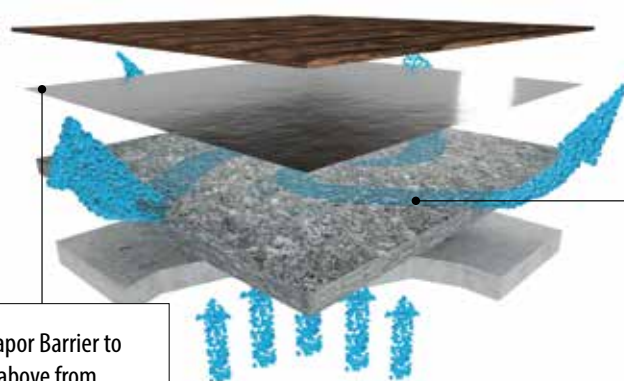
Raises the subfloor to reduce trip hazards while providing the benefits & moisture protection of a premium underlayment.



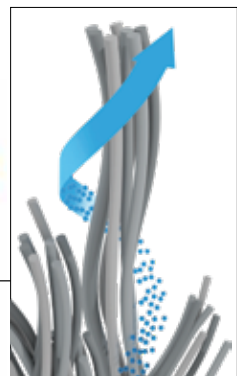
REDUCES GAPS & LEVELS FLOORING



FEATURING  EXCLUSIVE
DRI-WICK
TECHNOLOGY



Built-in Class I Vapor Barrier to protect flooring above from damaging subfloor vapor



Hydrophilic fibers prevent build up of harmful bulk moisture

- Integrated film adds moisture protection and thermal reflective properties
- Acoustical and impact noise barrier
- Adds insulation and energy efficiency
- Makes floors solid & comfortable underfoot
- Closes the gap between trim and floors
- Lightweight construction that's easy to work with & cuts with a utility knife

- Maintains structural integrity
- Approved for use with In-Floor Heating Systems
- Made with 100% recycled materials
- Patent pending

APPROVED FLOOR COVERINGS

All Vinyl Planks & Tiles, Laminate, Floating & Glue Down Wood, Cork, Bamboo, Carpet & Carpet Tile

FloorLyftULTRA



INDUSTRY LEADING SOUND ABSORPTION



IMPACT Insulation Class (IIC)

This method is to measure the impact sound transmission performance of a floor-ceiling assembly (sound transmission through the floor).

* The higher the number, the better the noise control!

IIC	Flooring	Structure
72	5.5mm Vinyl Plank	8" Concrete slab - with ceiling
59	5.5mm Vinyl Plank	8" Concrete slab - no ceiling
56	5.5mm Vinyl Plank	6" Concrete slab - no ceiling
54	5.5mm Vinyl Plank	Wood Structure



SOUND TRANSMISSION Class (STC)

This method is to measure the air-borne sound insulating property of a partition element for effectiveness in blocking sound.

* The higher the number, the better the noise control!

STC	Flooring	Structure
64	5.5mm Vinyl Plank	8" Concrete slab - with ceiling
60	5.5mm Vinyl Plank	Wood Structure
56	5.5mm Vinyl Plank	8" Concrete slab - no ceiling
52	5.5mm Vinyl Plank	6" Concrete slab - no ceiling



DELTA IIC TEST

Tests the impact insulation difference between a bare concrete subfloor with no flooring materials and the same concrete subfloor with flooring and underlayment.

* The higher the number, the better the noise control!

Delta IIC	Flooring	Structure
25	5.5mm Vinyl Plank	6" Concrete slab - no ceiling

FloorLyft Ultra Installation Methods:

Can be floated, stapled, or glued over wood or concrete subfloors. See full installation guide for complete instructions.



Size:

2'x3' panels (part # FLY6ULTRA) & 4'x6' panels (part # FLY6ULTRA)

Packaging:

- (4'x6') 23 Pallets per truck / 150 panels per pallet / 3,450 total panels per truck (82,800 sqft)
- (2'x3') Inner pallet pack out - 44 pallets per truck / 80 panels per box / 4 boxes per pallet / 14,080 total panels per truck (84,480 sqft)
- (2'x3') Retail pack out - 58 pallets per truck / 15 panels per box / 16 boxes per pallet / 13,920 total panels per truck (83,520 sqft)

SPECIFICATIONS

Materials:
100% Recycled Fibers

Thickness
1/4" (6mm)

Density
22.608lbs/ft³

Weight
0.55lbs/ft²

Moisture Emissions Protection
7lbs/1000ft²/24hrs

R-value
0.73-Hr-ft²-degf/btu

Force Reduction:
13.1%

No Vocs / Antimicrobial Treated Fibers

Castor Chair Test Reached 25,000 Cycles

Compression Resistance
496.8 Psi

Meets Federal Flammability Standard:
1-70 (Pill Test)

Approved For Use With In-floor Heating Systems



LEED CREDITS

- MR 4.1 10% recycled content
- MR 4.2 20% recycled content
- MR 5.1 10% content manufactured within 500 miles of project
- MR 5.2 20% content manufactured within 500 miles of project
- MR 6 Rapidly renewable resource EQ 4.3 low emitting VOC's

DOC#859709 REV1024