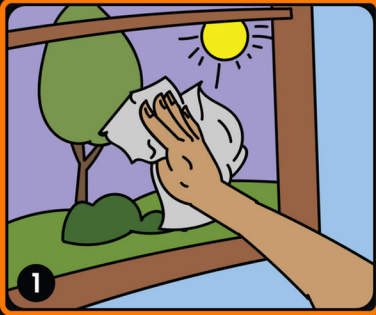




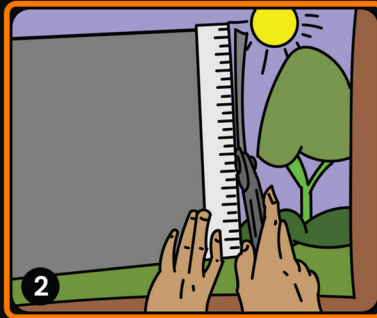
## How To Install

Step 1:



Clean Glass

Step 2:



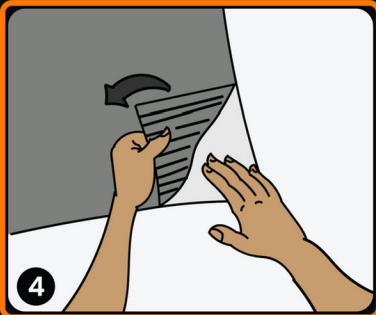
Take Stealth Tint out of the box and trim to fit the glass surface using a razor knife

Step 3:



Wet glass with included install solution

Step 4:



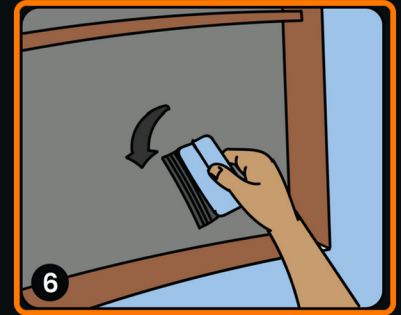
Separate the release liner from the adhesive side of the film using tape pull tab

Step 5:



Place film with adhesive side on wet glass and align for final placement

Step 6:



Squeegee excess liquid from behind film removing all air bubbles with included Hard Card



# Stealth Tint®

www.stealthtint.com