

The shower is delivered in two wood crates with carton box contents as follows:

Box 1:

- 2 front flat glass panels attached to an aluminum frame on one side,
- 2 curved glass doors, 2 wall mounting aluminum anchor strips,
- 4 door seals (2 magnetic and 2 clear).

Box 2:

- Shower base,
- 2 aluminum door tracks tucked under the base,
- 8 door rollers (4 double rollers for the top track and 4 single rollers for the bottom track),
- 2 sets of door handles,
- 8 iron screws (7/8") for constructing the front frame,
- 4 chromed plastic clips and four 1/2" metal screws,
- 6 drywall anchors and 6 1-1/4" screws,
- 10 pieces of 1/4" screws,
- Drain with flexible hose (for 1-1/2" option only).

Shower & Bath Enclosure Installation Instructions

Thank you for purchasing Heirloom Home Showers' products. We are committed to providing our customers with high quality products at a competitive price.

Please read all instructions carefully before and during installation.

Professional help is required for installation.

These installation instructions should be used as a guideline. Your specific shower or bath enclosure may differ from the figures shown in these instructions. These instructions are for the following shower models: SF-3636 and SF-3838.

1. Pre-installation

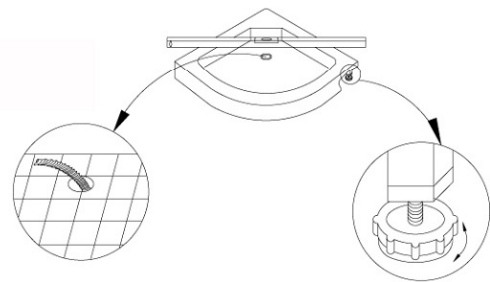
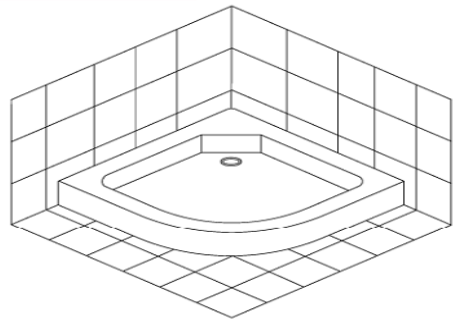
Additional Installation Tools:

Check the area you want to install your unit for the following:

- a. • Water hook-ups
 - b. • Floor drain (2" hard-plumbed drain is the US standard)
 - c. • Measure the area to ensure that once the unit is installed, the wall studs or drywall anchors are lined up with front panel aluminum vertical frames.
- Dry wall screws
• Silicone sealant
• Philips head screwdriver
• Flat head screwdriver
• Power drill

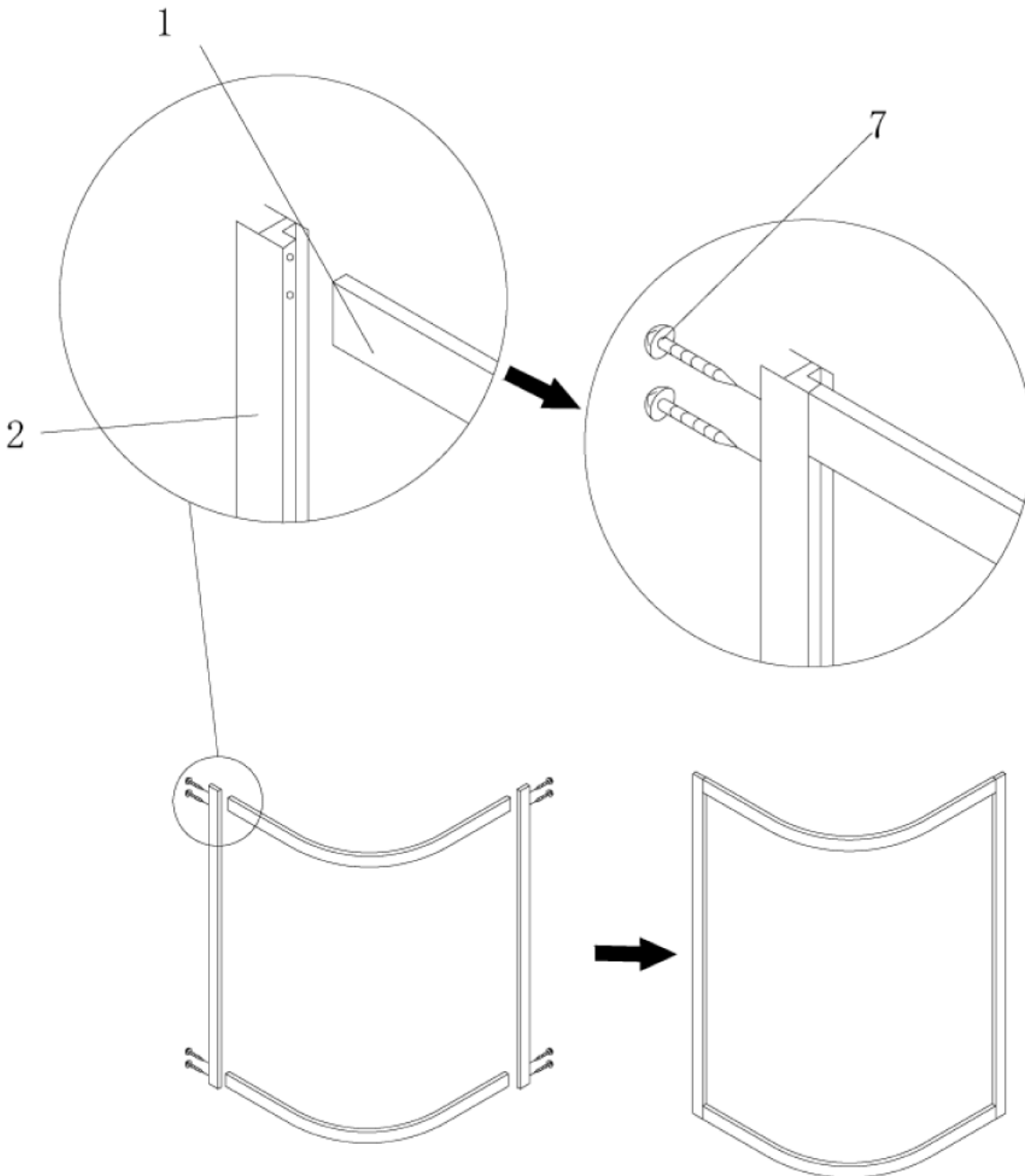
the white plastic drain.

- f. Place the top portion into the drain hole in your base.
- g. Apply silicone sealant to the bottom portion of the white plastic drain (about 1/4" from the edge of the rim) and place it over the drain hole from the underside of the base.
- h. Screw the top of the plastic drain into the bottom until tight. Do not over tighten as this may crack the plastic.
- i. Reattach the plastic piping to the plastic drain.
- j. Extend the piping and feed it into the floor drain. You may use 1-1/4" to 2" coupling to secure the drainpipe to your floor drain.
- k. For 2" drain, simply hard-plumb the 2" drain with PVC pipe to the base. The base is set and secured to its designed location.



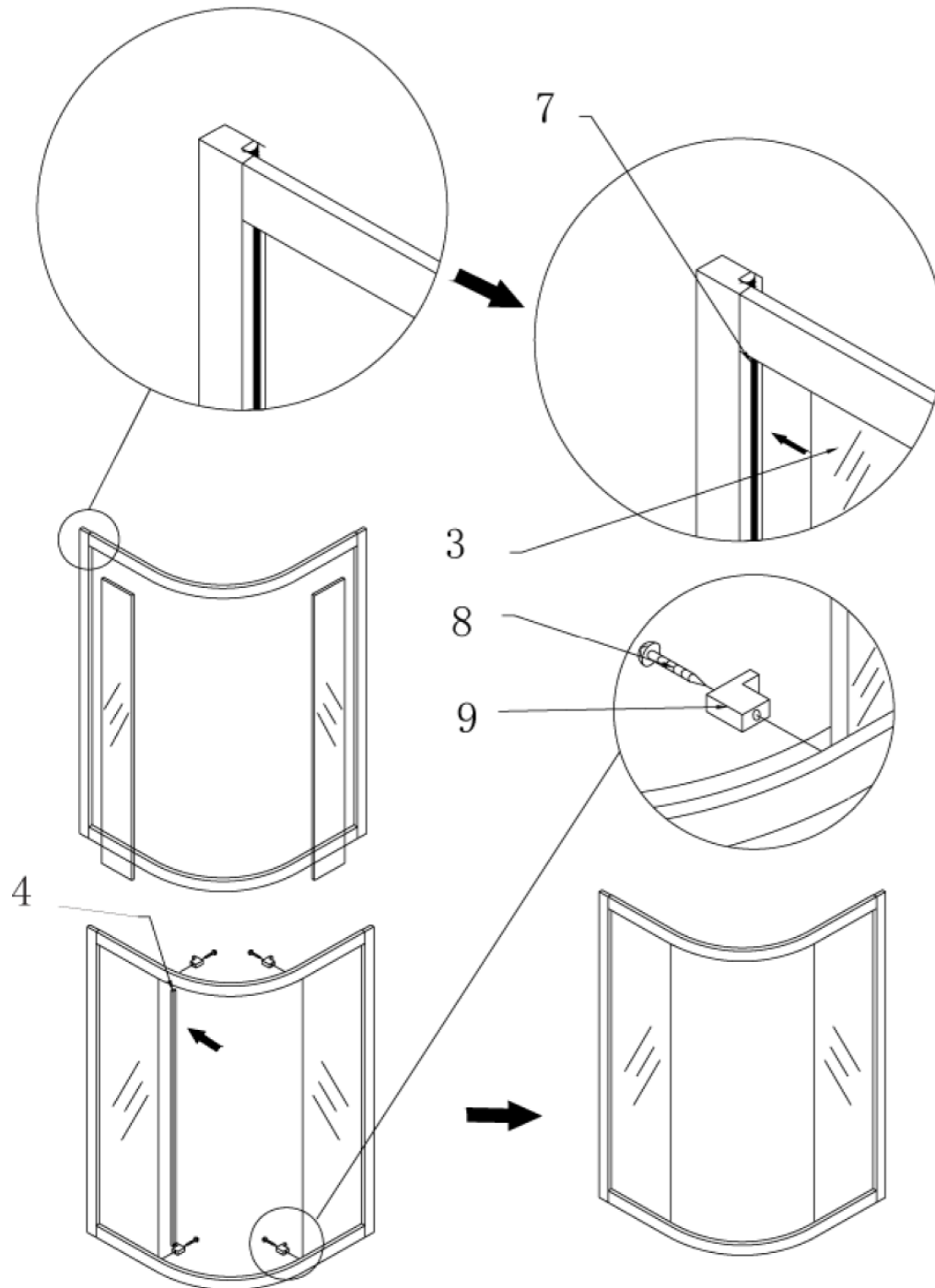
3. Front Frame Assembly: connection of big stiles to tracks

- a. Now let's assemble the front frame of two front panels (aluminum frames are already installed) and two door curved tracks.
- b. It is recommend working on a big working table covered with a soft blanket
- c. The wide track is the top track and narrow track is the bottom.
- d. Connect tracks to the vertical stiles (wider stiles at the end) with two metal screws as shown by the illustration.
- e. The longer straight sides of the tracks are for the bigger panel
- f. The pictures below are for illustration of how stiles and tracks are attached only.



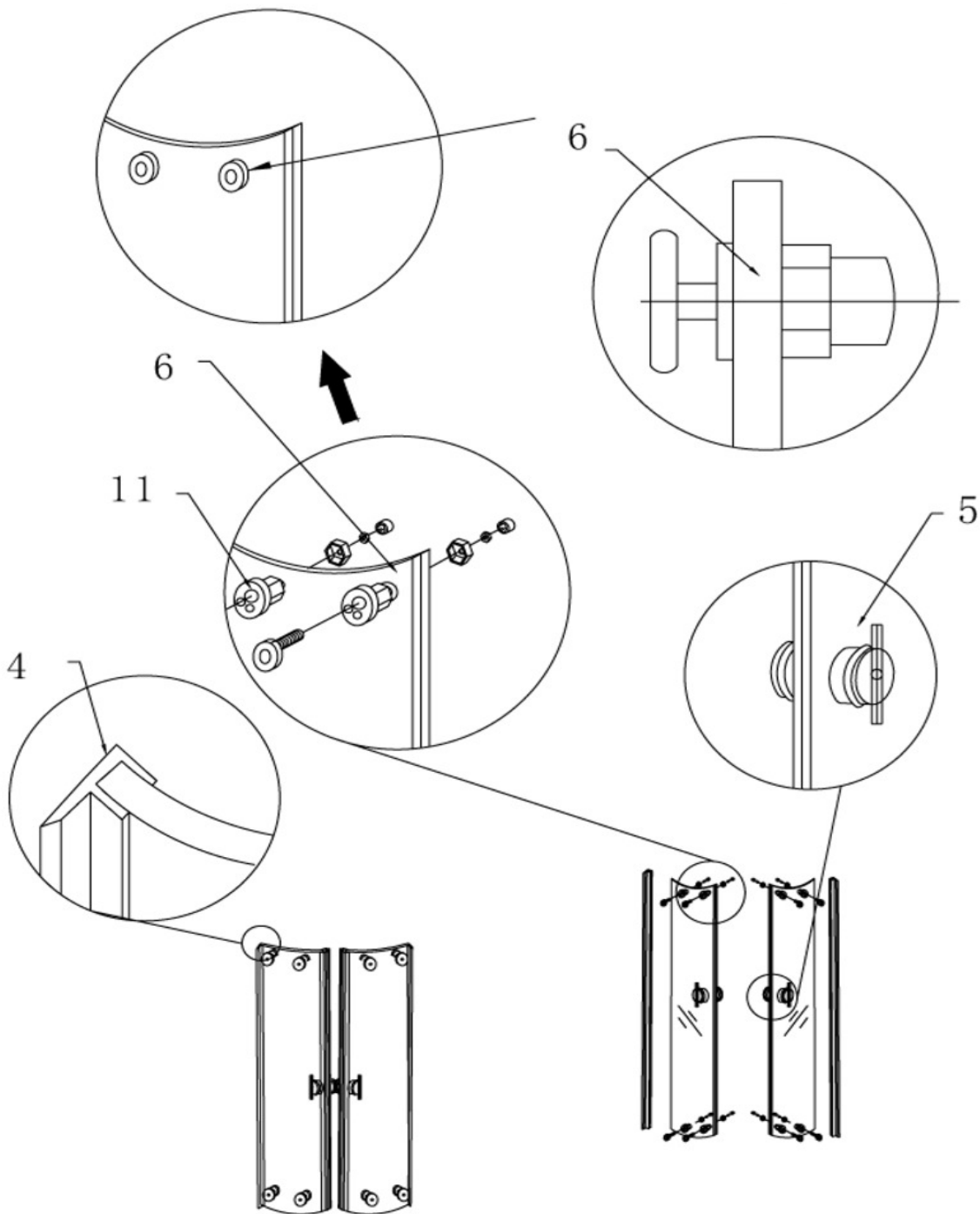
4. Front frame assembly: connection of small stiles to tracks

- a. The pictures are for illustration only. The glass is already framed in for our situation.
- b. We now need to attach the small stiles on the front panels to tracks. Part#9 is not needed for this model. The small stiles are already attached to the end of glass panels as shown by part#4.
- c. Use clamps to clamp the small stiles to the top and bottom tracks.
- d. Drill pilot (3/16") holes on the first aluminum layer of the small stiles THROUGH pre-drilled big holes on the tracks.
- e. Use 1/2" screw to attach the Top track to the small stile. The screw head will not be sunk into the top track.
- f. Use 1/4" screw to attach the Bottom track to the small stile. The screw head will be sunk into the bottom track clear



5. Glass Door Assembly

- a. Install the door rollers as shown by 6, putting double rollers are on the top and single rollers are on the bottom of the door, but do not tighten them too tight yet.
- b. Locate handle holes on the doors and install water seal strips with magnets (dark brown) on the edges near the door handles and clear strips (4) to the other edges as shown by the illustration.



6. Unit installation

- a. Put wall mounting aluminum anchor strips into the front panel's vertical frames.
- b. Move the whole front frame onto the top of the base.
- c. Set the whole front frame to the correct place. Use mark to trace the edges of the anchor strips onto the walls.
- d. Take the whole front frame off the base and take the anchor strips off the panel frames.
- e. Use screw-anchors and drywall screws to install the anchor strips to the wall inside the marker lines.
- f. Replace the whole front frame back onto the base. Push the anchor strips inside the panel frames
- g. Use 3/32" metal drill bit to drill three pilot holes on the inner sides of the panel frames. The pilot holes will go through the inside layers of the anchor strips too.
- h. Use 1/4" on these pilot holes.

6. Caulking

Use silicon sealant to seal all the seams and joints from inside shower. Seal the joint between the base and floor