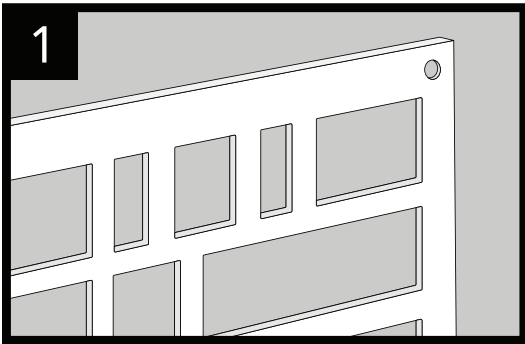


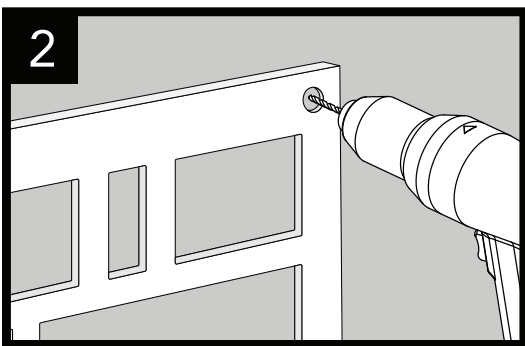
Decorative Panel 2' x 4'

Installation Instructions:

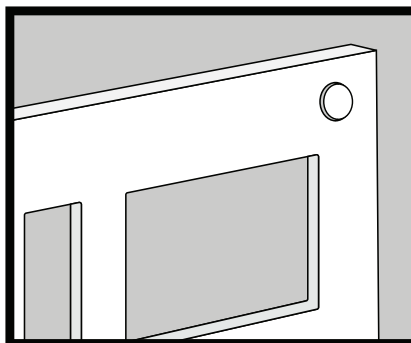
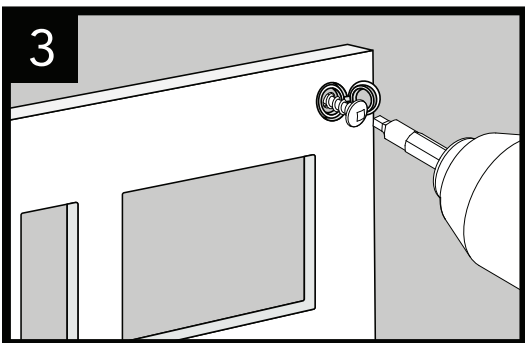
- Easy to install.
- Each panel requires four (4) #8, 1½" stainless steel screws (sold separately).
- Leave a 1/16" gap between sheets for expansion and contraction.
- Secure all four corners of the panel to the mounting surface.
- Product expands and contracts with temperature changes.
- Do not nail; mount loosely to allow movement.
- Easy to cut with a fine-tooth saw.
- Made from durable, high-quality, low-maintenance polypropylene plastic.
- Fully paintable—consult your local paint store for proper instructions.
- C & H channels available in matching colors (sold separately).



Indentation identifies the recommended fastener location.



Pre-drill using a 1/8" bit.



Place the screw into the hole of the cap, fasten, then cap.