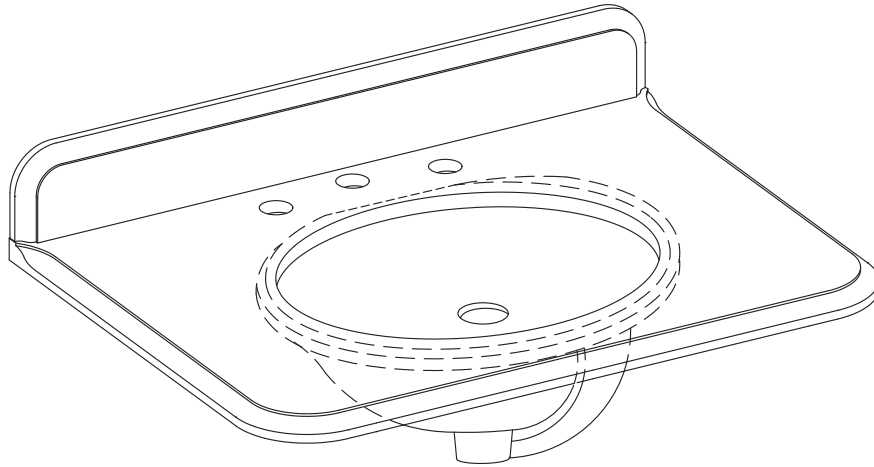


welcoming • sophisticated • inspiring



MODEL NUMBER	DESCRIPTION
1116VT-30-900	30" Carrara Marble Top with Backsplash
1116VT-30-901	30" Engineered White Top with Backsplash
1116VT-30-905	30" Terrazzo Top with Backsplash

STONE TOP WITH BACKSPLASH

MODEL #1116VT-30-900; 1116VT-30-901; 1116VT-30-905

ATTACH YOUR RECEIPT HERE

Serial Number _____ Purchase Date _____

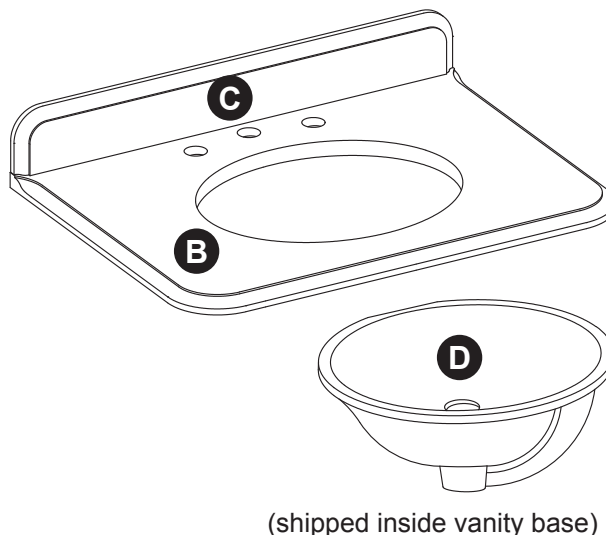
Questions, problems, missing parts? Refer to Vanity Base Instruction Manual for Customer Service Contact Information.

TABLE OF CONTENTS

Package Contents.....	3
Hardware Contents.	3
Safety Information.	3
Preparation	3
Assembly or Installation Instructions	4
Replacement Parts List	6

PACKAGE CONTENTS

PART	DESCRIPTION	QUANTITY
B	Top	1
C	Backsplash	1
D	Sink (shipped inside vanity base)	0



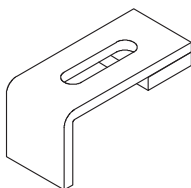
HARDWARE CONTENTS (NOT SHOWN ACTUAL SIZE)

AA



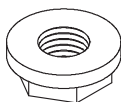
Bolt
Qty. 4

BB



Sink Bracket
Qty. 4

CC



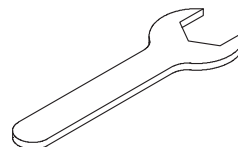
Nut
Qty. 4

DD



Lock Washer
Qty. 4

EE



Wrench
Qty. 1

! SAFETY INFORMATION

Please read and understand this entire manual before attempting to assemble, operate or install the product.

! WARNING

- Some steps are more easily handled with 2 adults.

CAUTION

- Use care when assembling the stone top and sink; take your time and follow the assembly instructions closely.

KEEP THESE INSTRUCTIONS FOR FUTURE REFERENCE.

PREPARATION

Before beginning assembly of product, make sure all parts are present. Compare parts with package contents list and hardware contents list. If any part is missing or damaged, do not attempt to assemble the product.

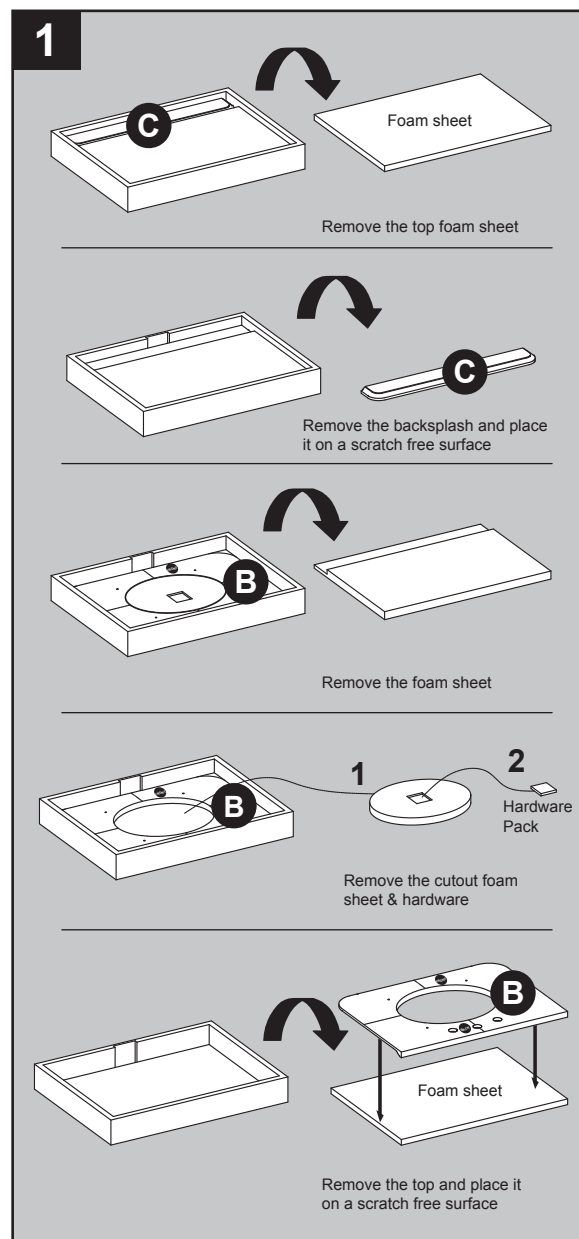
Estimated Installation Time: 10 minutes (24 hours for silicone caulk to dry).

Tools Required for Installation (not included): Phillips screwdriver, utility knife or scissors.

INSTALLATION INSTRUCTIONS

Follow the assembly instruction manual inside the vanity base to security the vanity to the wall before installing the top (B) onto the vanity base.

1. Take out the top (B) and backsplash (C) according to the steps indicated by the drawings on the right, and place them face down onto a scratch free surface such as a foam sheet that came in the packaging.

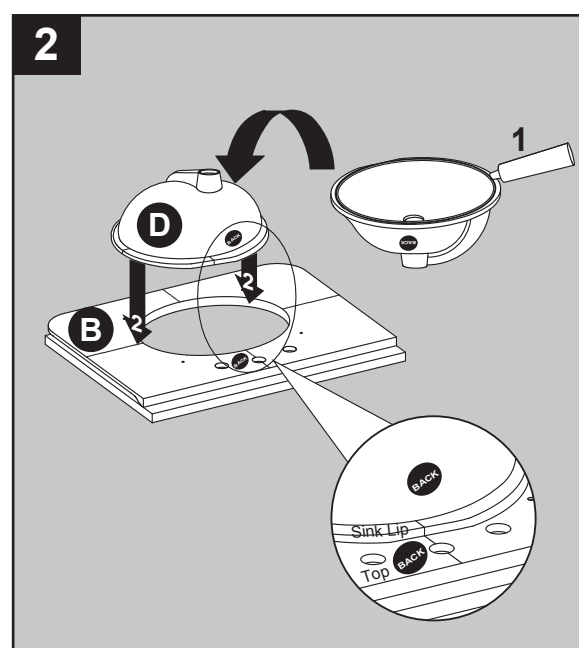


2. Apply silicone caulk (not included) to the top edge of sink (D). With the help of another adult, lower the sink onto the back side of the stone top.

Make sure the sink over-flow hole is facing the front of stone top.

Be sure to align the sink well with the stone top cut out allowing for equal stone overhang on the front, back and sides of the ceramic sink (D).

Note: To install the sink onto the top correctly, ensure that the two "BACK" stamps on the sink and the top are aligned on the same sides. Use the guide lines marked on the sink and bottom side of stone top to assist with sink location.

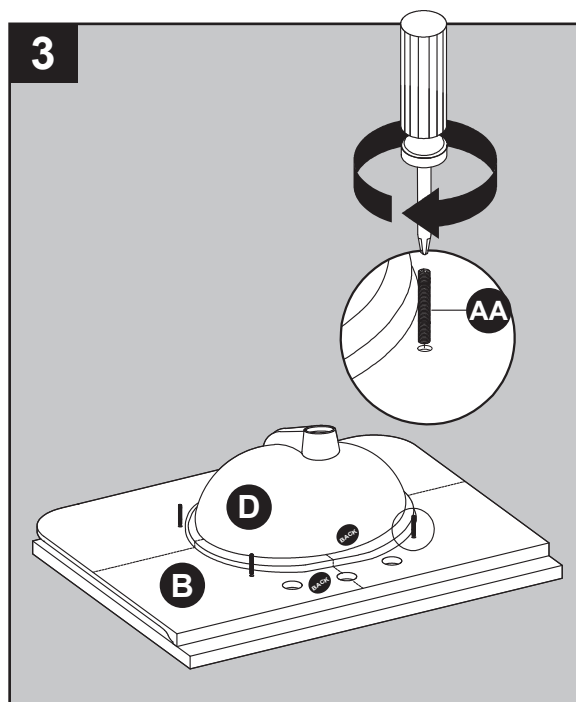


INSTALLATION INSTRUCTIONS

3. Screw bolts (AA) into the threaded holes of stone top (B)

Hardware Used

AA Bolt  x 4

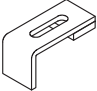



4. Lower the sink brackets (BB) over the bolts (AA) and allow to rest on the sink lip. Adjust location of bracket to firmly grasp sink lip. Lower lock washers (DD) over bolts (AA) and secure with nuts (CC). Hand tighten nuts (CC) with included wrench (EE). DO NOT OVER TIGHTEN!


Tip: check that the sink placement is well centered front to back and side to side of the stone top cut out before allowing the silicone caulk to dry. If the sink is not centered well unscrew sink clamps, re-adjust the sink position and re-tighten the sink brackets.


At this time, refer back to the Instruction Manual that came in the carton with the Vanity Base to complete installation.

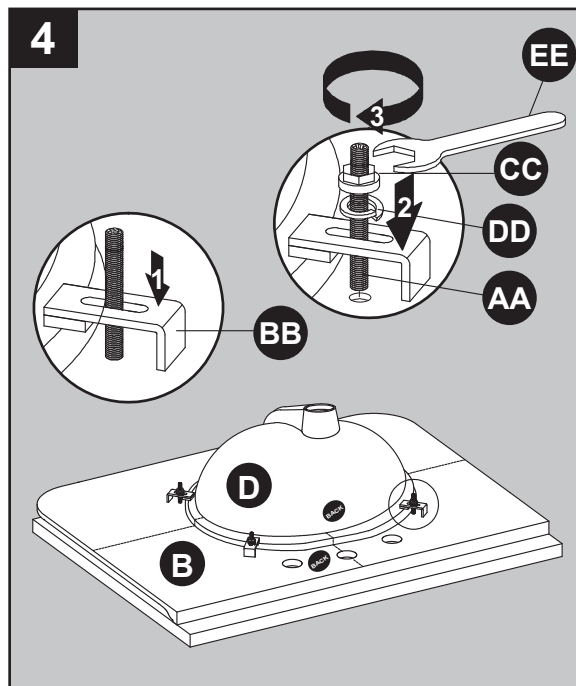
Hardware Used

BB Sink bracket  x 4

CC Nut  x 4

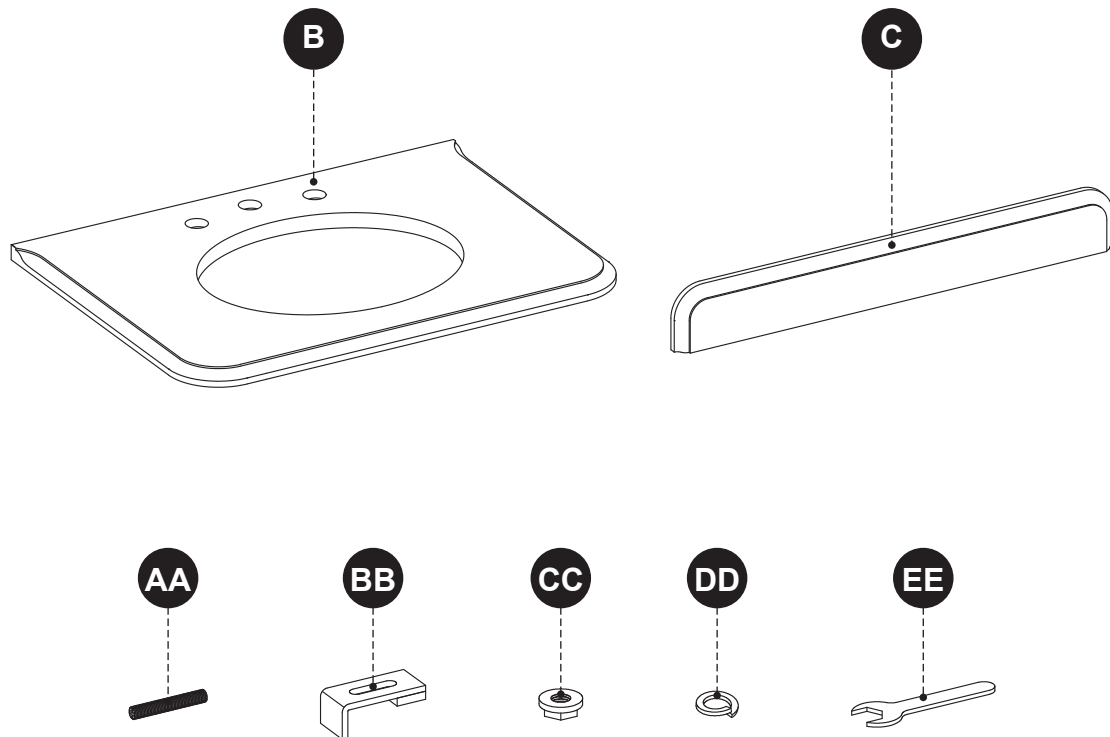
DD Lock Washer  x 4

EE Wrench  x 1



REPLACEMENT PARTS LIST

For replacement parts, refer to Vanity Base Instruction Manual.



PART	DESCRIPTION	PART#
B	Complete Set 30" Carrara Marble Top	1116VT-30-900
	Complete Set 30" Engineered White Top	1116VT-30-901
	Complete Set 30" Terrazzo Top	1116VT-30-905
C	30" Carrara Marble Backsplash	PU1116BS-30-900
	30" Engineered White Backsplash	PU1116BS-30-901
	30" Terrazzo Backsplash	PU1116BS-30-905
AA	Bolt	GTC-SINK CLIPS
BB	Sink Bracket	
CC	Nut	
DD	Lock Washer	
EE	Wrench	