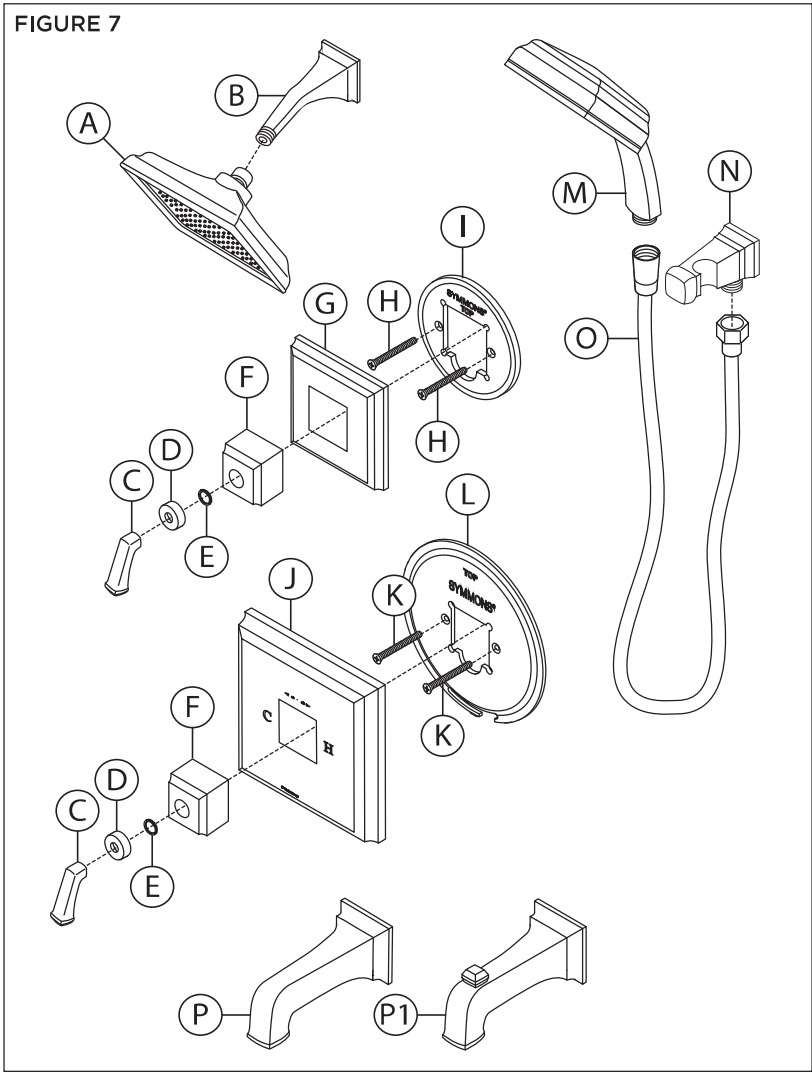


7. Parts Breakdown

FIGURE 7



*Order in-line vacuum breaker (EF-109) for hand shower systems without dual checks.

Replacement Parts		
Item	Description	Part Number
A	Showerhead	422SH
B	Shower Arm	422SA
C	Diverter Handle	T-549-DIV
D	Diverter Handle Flange	T-549
E	Lock Nut	T-543
F	Dome Cover	T-543
G	Diverter Escutcheon	LD-132-NS
H	Screws	
I	Mounting Plate	
J	Dial	T-542-NS-K001
K	Screws	
L	Mounting Plate	
M	Hand Shower	422W
N	Wall Cradle	T-547
O	60" Hose	RTS-045
P	Tub Spout	422TS
P2	Diverter Tub Spout	422TSD

Notes:

- 1) Append appropriate suffix for premium finish.
- 2) Append appropriate flow rate to showerhead or hand shower for low flow.
- 3) Apply a bead of silicone around the perimeter of all shower trim installed flush to the finished wall. Leave opening on bottom of escutcheons for weep hole.
- 4) Apply plumber tape to all threaded connections.

WARNING: This product can expose you to chemicals including lead, which is known to the state of California to cause cancer, birth defects, or other reproductive harm. For more information, go to www.P65Warnings.ca.gov.