



SIMPLE MANUAL

Wireless Rear Speakers Kit

Please read this manual carefully before operating your set and retain it for future reference.

To view the instructions of advanced features, visit <http://www.lg.com> and then download Owner's Manual. Some of the content in this manual may differ from your unit.

LG Customer Information Center

1-800-243-0000	USA, Consumer
1-888-865-3026	USA, Commercial

Register your product Online!

www.lg.com

MODEL
SPK8-S

FCC Compliance Statement

This equipment has been tested and found to comply with the limits for a Class B digital device, pursuant to Part 15 of the FCC Rules. These limits are designed to provide reasonable protection against harmful interference in a residential installation. This equipment generates, uses, and can radiate radio frequency energy and, if not installed and used in accordance with the instructions, may cause harmful interference to radio communications. However, there is no guarantee that interference will not occur in a particular installation. If this equipment does cause harmful interference to radio or television reception, which can be determined by turning the equipment off and on, the user is encouraged to try to correct the interference by one or more of the following measures:

- Reorient or relocate the receiving antenna.
- Increase the separation between the equipment and the receiver.
- Connect the equipment to an outlet on a circuit different from that to which the receiver is connected.
- Consult the dealer or an experienced radio/TV technician for help.

This device complies with part 15 of the FCC Rules. Operation is subject to the following two conditions:

(1) this device may not cause harmful interference and
(2) this device must accept any interference received, including interference that may cause undesired operation. Any changes or modifications in construction of this device which are not expressly approved by the party responsible for compliance could void the user's authority to operate the equipment.

FCC RF Radiation Exposure Statement : This equipment complies with FCC radiation exposure limits set forth for an uncontrolled environment. This transmitter must not be co-located or operating in conjunction with any other antenna or transmitter.

This equipment should be installed and operated with minimum distance 20 cm (7.8 inches) between the antenna and your body. Users must follow the specific operating instructions for satisfying RF exposure compliance.

FCC Radio Frequency Interference Requirements :

High power radars are allocated as primary users of the 5.25 to 5.35 GHz and 5.65 to 5.85 GHz bands. These radar stations can cause interference with and/or damage this device. This device cannot be co-located with any other transmitter.

Supplier's Declaration of Conformity

Trade Name	LG
Responsible Party	LG Electronics USA, Inc.
Address	1000 Sylvan Ave Englewood Cliffs, NJ 07632
Telephone	(201)266-2215

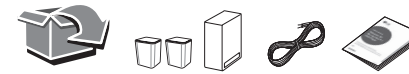
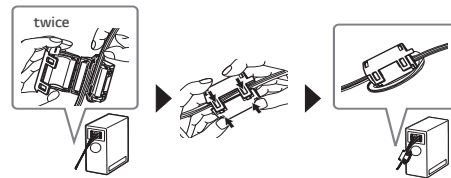
Additional Information

Specification of Wireless receiver

Power requirement	Refer to the main label on the wireless receiver.
Power consumption	Refer to the main label on the wireless receiver.
Dimensions (W x H x D)	Approx. 60.0 mm x 220.0 mm x 175.0 mm (2.4 inch x 8.7 inch x 6.9 inch)

Design and specifications are subject to change without notice.

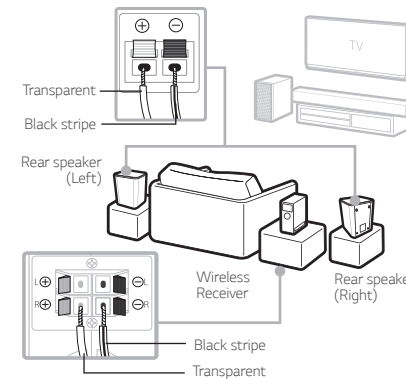
About Ferrite Core (Optional)



1

Rear Speakers Connection

Speaker design and connection method may be different according to models.



- 1 Connect the speaker cables to rear speakers correctly.
- 2 Connect the Wireless Receiver and the rear speakers (Grey: right, Blue: left) with the speakers cables.
- 3 Turn on the Surround function to enjoy surround sound.

2

Wireless Receiver Connection

- 1 Connect the power cord of the wireless receiver to the AC outlet.
- 2 Turn on the unit: The unit and wireless receiver will be **automatically** connected. The receiver's yellow - green LED turns on

Wireless Receiver Connection Manually

If the rear speakers do not make sound, try to connect manually.

- 1 Press **PAIRING** button on the rear of the wireless receiver.
 - The yellow - green LED on the wireless receiver blinks quickly.
- 2 Turn on the main unit.
- 3 Pairing is completed.
 - The yellow - green LED on the wireless receiver turns on.

Surround Sound On/Off

When you turn on surround function, you can enjoy magnificent surround sound for all the input sound source with rear speakers.

The initial setting for the surround function is OFF, turn the surround function ON to use it.

SK5Y

Surround On: Press and hold **REAR +** button on the remote control about 2 seconds.

Surround Off: Press and hold **REAR -** button on the remote control about 2 seconds.

SK10Y/SK9Y/SK8Y/SK6Y

Surround On: Press and hold **AUTO VOL** button on the remote control about 2 seconds and then press **AUTO VOL** button repeatedly to select ON - SURROUND in the display window.

Surround Off: Press and hold **AUTO VOL** button on the remote control about 2 seconds and then press **AUTO VOL** button repeatedly to select OFF - SURROUND in the display window.

SL4Y/SL5Y/SL5YF/SL6Y/SL6YF/SL7Y/SL7YF/SL8Y/SL8YG/SL9Y/SL9YG/SL10Y/SL10YG

Surround On: Press and hold **↕↕** button on the remote control about 3 seconds and then press **↕↕** button repeatedly to select ON - SURROUND in the display window.

Surround Off: Press and hold **↕↕** button on the remote control about 3 seconds and then press **↕↕** button repeatedly to select OFF - SURROUND in the display window.