

Diagram and Parts List

Before Installation

- A. Make sure you have all necessary parts by checking the diagram and parts list.
- B. Turn off the hot and cold water supply at the angle stops and turn on the old faucet to release any built up pressure. Remove existing faucet. Clean sink or countertop in preparation for new faucet.
- C. Shut off angle stops.
- D. Pre-drilled size requirement: 1-3/8" (min)-1-1/2"(max)
 Max countertop thickness without deck plate: 1-1/2"(1 hole install)
 Max countertop thickness with deck plate: 1"(1, 2or 3 hole install)

1/16" (1 mm) min
 1-1/2" (38 mm) max
 ϕ 1-3/8" (35 mm) min
 ϕ 1-1/2" (38 mm) max



1/16" (1 mm) min
 1" (25.4 mm) max
 ϕ 1-3/8" (35 mm) min
 ϕ 1-1/2" (38 mm) max



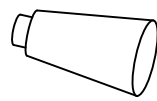
Tools you will need:



Adjustable Wrench



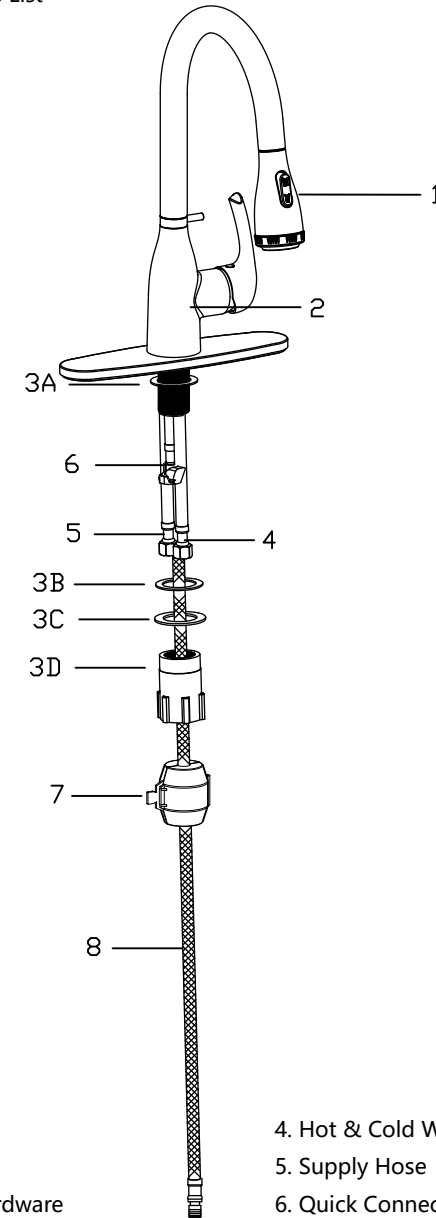
Safety Goggles



Silicone Sealant



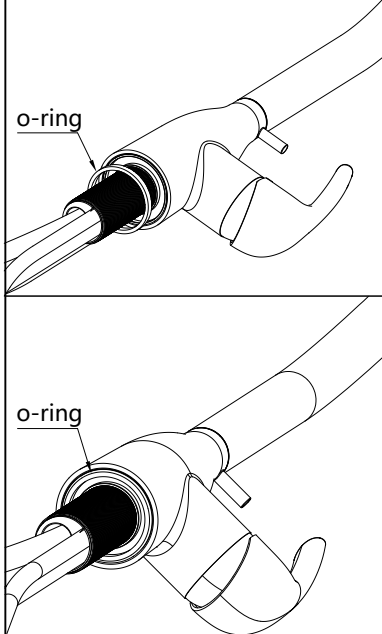
Bucket



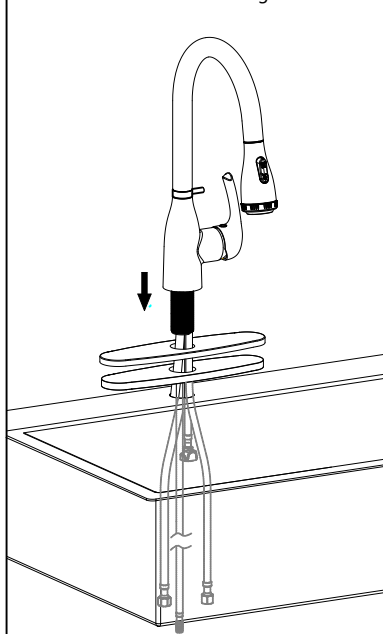
1. Sprayer Head
2. Faucet Body
3. Mounting Hardware
 - A. Black Washer
 - B. Clear Washer
 - C. Metal Washer
 - D. Mounting Nut

4. Hot & Cold Waterlines
5. Supply Hose
6. Quick Connect
7. Weight
8. Sprayer Hose

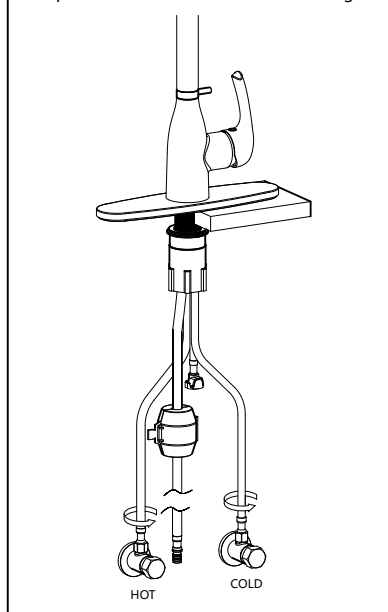
1. Check if there is an O-ring at the bottom of the faucet that seals the water.



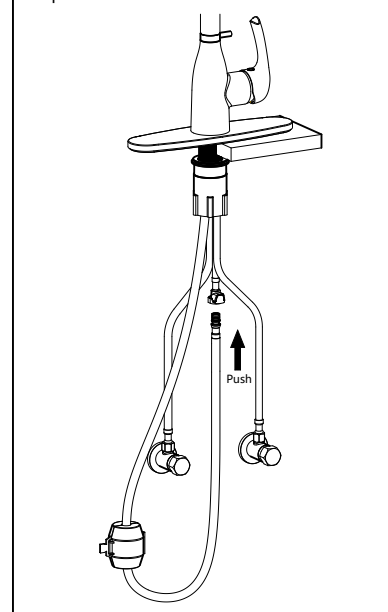
2. Slide the washer (O-ring) to faucet base. Insert the new faucet through sink.



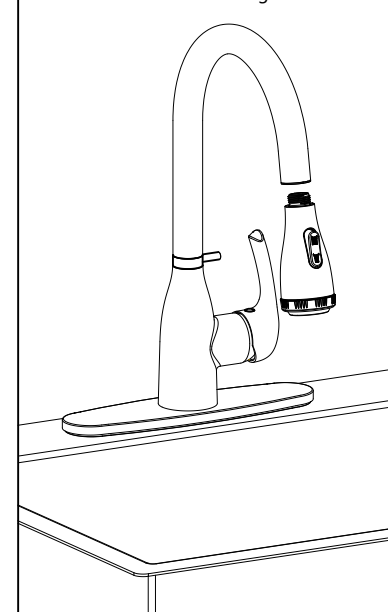
3. Correct and tighten hot and cold water hose.
Note: Made sure that a small washer (O-ring) is put on each water-line before screwing.



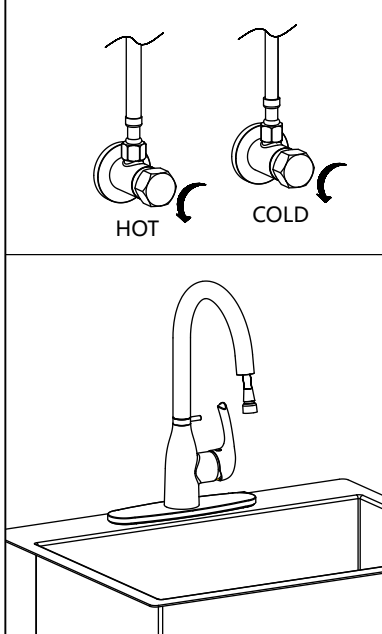
4. Push the sprayer hose to the quick connect.
Note: Please do not use the tape for the quick connect.



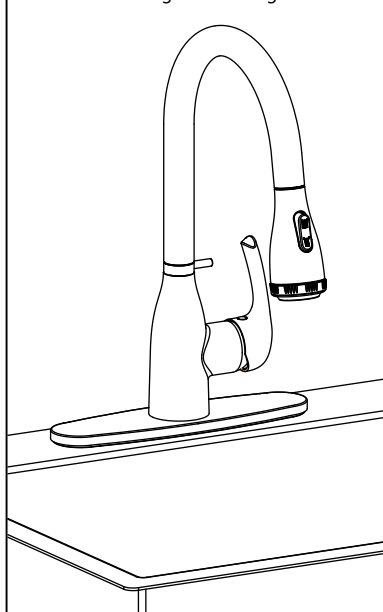
5. Place handle in off position. Screw off the sprayer head.
Note: Don't lost the O-ring.



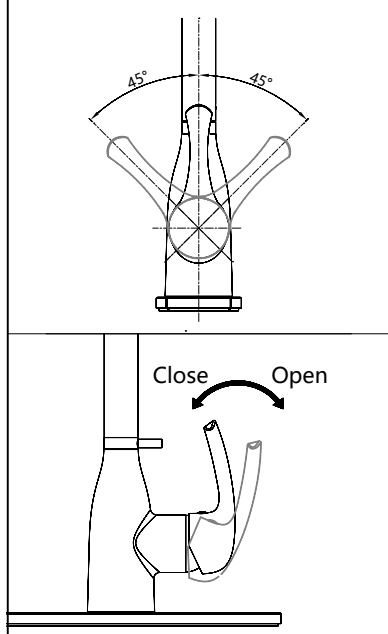
6. Turn on water supply. Check for leaks and flush hoses and flush the faucet for 30s.



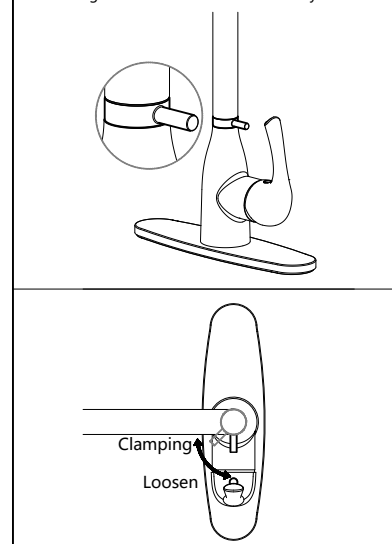
7. Turn off the faucet, screw the sprayer head back the sprayer hose.
Note: Don't forget the O-ring.



8. Angle of faucet handle.
Switch direction of the handle.



9. **The function of this device:** When in use, if you want to pull the hose without retracting, move the handle of the device in the direction of clamping to tighten the hose and prevent it from retracting. Pulling back the device handle can release the hose, allowing it to retract and retract normally.



Care and Clean

For best results, keep the following in mind when caring for your faucet:

Use a mild detergent such as liquid dish washing soap and warm water for cleaning. Do not use abra-sive cleaners that may scratch or dull the surface.

Carefully read the cleaner product label to ensure the cleaner is safe for use on the entire surface.

Always test your cleaning solution on an inconspicuous area before applying to the entire surface.

Do not allow cleanere to sit or soak on the surface, wipe surface clean and rinse completely with water immediately after cleaning application. Rinse and dry any overpray that lands on nearby surface.