



Installation Instructions

Replacement Filter for Undersink Water Filtration System



Certified by WQA against NSF/ANSI Standards 42 in model EWF-8016S/EWF-8017S/EWF-8018S for the reduction of the claims specified on the Performance Data Sheet, and to NSF/ANSI 372 ($\leq 0.25\%$ lead).

Specifications

Operating temperature	2-38°C/35-100°F
Working pressure	10-100psi (0.7-6.8bar)
Flow rate	0.75gpm (2.83lpm)
Filter capacity	WD-RF10/WD-RF10-UF/MZ/AK: up to 11,000 gallons
	WD-RF15/WD-RF15-UF/MZ/AK: up to 19,000 gallons
	WD-RF17/WD-RF17-UF/MZ/AK: up to 24,000 gallons
Feed water requirement	Municipal tap water

Note:

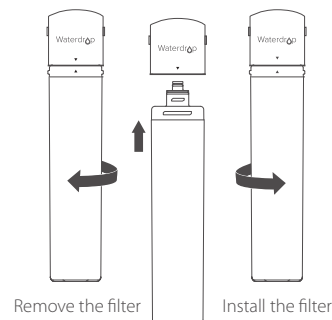
1. If using well water as the source, please make sure the feed water has been through a pre-filtration system, otherwise, large particles in well water will clog the filter easily and shorten filter life.
2. The above form lists model numbers of only black filters. Please note that the white filter is different from the black filter only in color. They have the same filter material and filtration capacity.
3. Actual filter life varies according to local water quality.

Precautions

- Do not use it with water that's microbiologically unsafe or of unknown quality without adequate disinfection.
- For use only with cold water.
- Do not freeze the filter, as this can cause cracking and water leakage.
- Do not allow children under 3 years old to have access to small parts during installation of this product.
- This installation must comply with all applicable state and local regulations.
- Turn off the water supply while replacing the filter.

Filter replacement

1. It's recommended to turn off the water supply and turn on the faucet to release the water pressure.
2. Rotate 1/4 turn to the left to remove the filter.
3. Take out the new filter and remove the protective cap.
4. Rotate 1/4 turn to the right to install the filter. Ensure that the filter's triangle mark is aligned with the connection mark.
5. Turn on the cold water valve and flush for 5 minutes.



Frequently Asked Questions

Q: Why doesn't the TDS value lower after filtration?

A: The main purpose of this Waterdrop filter is not to remove TDS. TDS stands for total dissolved solids, and it is basically composed of inorganic salts and a small amount of organic matter. The filter can remove harmful substances while keeping beneficial trace elements. Please choose Waterdrop RO system if you are looking for physical removal of TDS.

Q: When should I replace the filter?

A: The filter's service life is related to the water quality. If the flow rate is significantly reduced or if the water has a peculiar smell, we suggest that you replace the filter. The recommended service life of the filter is as follows: 1 year for WD-RF10, WD-RF10-UF, WD-RF10-MZ and WD-RF10-AK, 2 years for WD-RF15, WD-RF15-UF, WD-RF15-MZ and WD-RF15-AK, 3 years for WD-RF17, WD-RF17-UF, WD-RF17-MZ and WD-RF17-AK.

Q: Why does my water taste bad?

A: The filter will produce unpleasant odor if it hasn't been used for a long time, especially for WD-RF10-UF, WD-RF15-UF, and WD-RF17-UF. If such a problem occurs, please flush the filter for 5 minutes before use. It could also be time to change the filter cartridge.

Performance data sheet (Filter Model No.)

WD-RF10-MZ/WD-RF10-AK/WD-RF10/WD-RF10W/WD-RF10-UF/WD-RF10W-UF/WD-RF10W-AK/
WD-RF10W-MZ/WD-RF15/WD-RF15-UF/WD-RF15W/WD-RF15W-UF/WD-RF15-AK/WD-RF15-MZ/
WD-RF15W-AK/WD-RF15W-MZ/WD-RF17/WD-RF17-UF/WD-RF17W-UF/WD-RF17W/WD-RF17-MZ/
WD-RF17-AK/WD-RF17W-AK/WD-RF17W-MZ

Substance reduction

The system has been tested and certified by WQA according to NSF/ANSI Standard 42 and NSF/ANSI Standards 372. The concentration of the indicated substances in water entering the system was reduced to a concentration less than or equal to the permissible limit for the water leaving the system, as specified by NSF/ANSI Standard 42. While testing was performed under standard laboratory conditions, actual performance may vary.

Performance Data Sheet			
Substance	Inf. Average	Specified Challenge Concentration	Ave. % Reduction
Chlorine Taste and Odor	2.0 mg/L	2.0 mg/L \pm 10%	92.7%
Average Product Water		Max Permissible Product Water	Reduction Requirements
0.05mg/L		N/A	$\geq 50\%$

System to be used with municipal or well water sources treated and tested on regular basis to ensure bacteriological safe quality. Do not use with water that is microbiologically unsafe or of unknown quality without adequate disinfection before or after the system.

Testing was performed under standard laboratory conditions, actual performance may vary.

WARNING Please read it carefully before installation.

The system and installation shall comply with applicable state and local regulations. Designed by Hongkong Ecoaqua Co., Limited.

Customer service:

- ☎ 1-888-352-3558 Mon-Fri 8:00 AM-5:00 PM (PST)
- ✉ service@water-filter.com
- 🌐 www.waterdropfilter.com (live chat available)