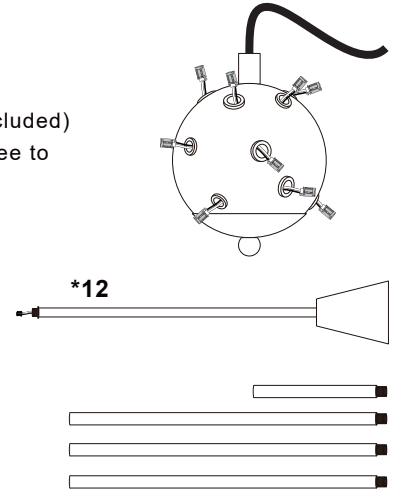
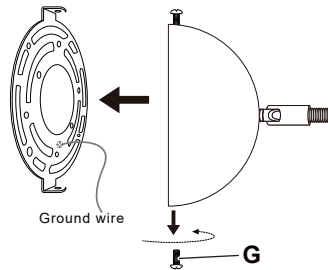
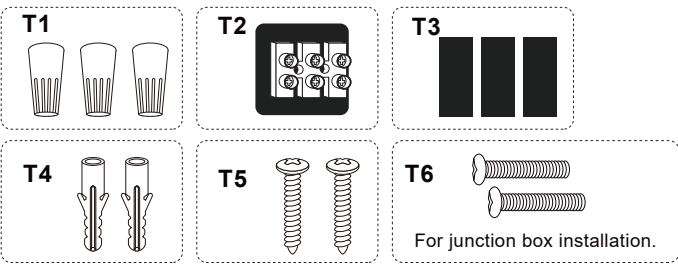


INSTRUCTIONS (* Please turn off the breaker before starting the installation.)

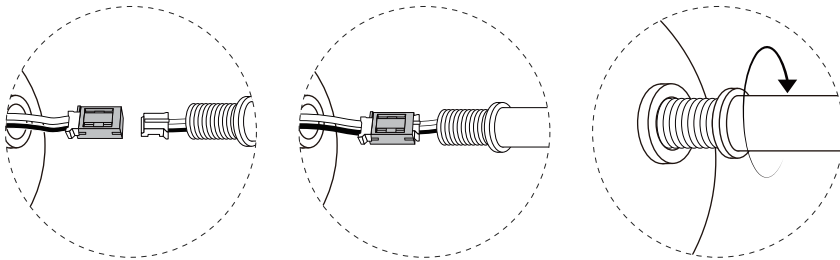
It is recommended to install it with 2 people due to the weight of the lamp.

NOTE :1. Please Check whether the accessories are missing in time after unpacking.(Bulbs not included)

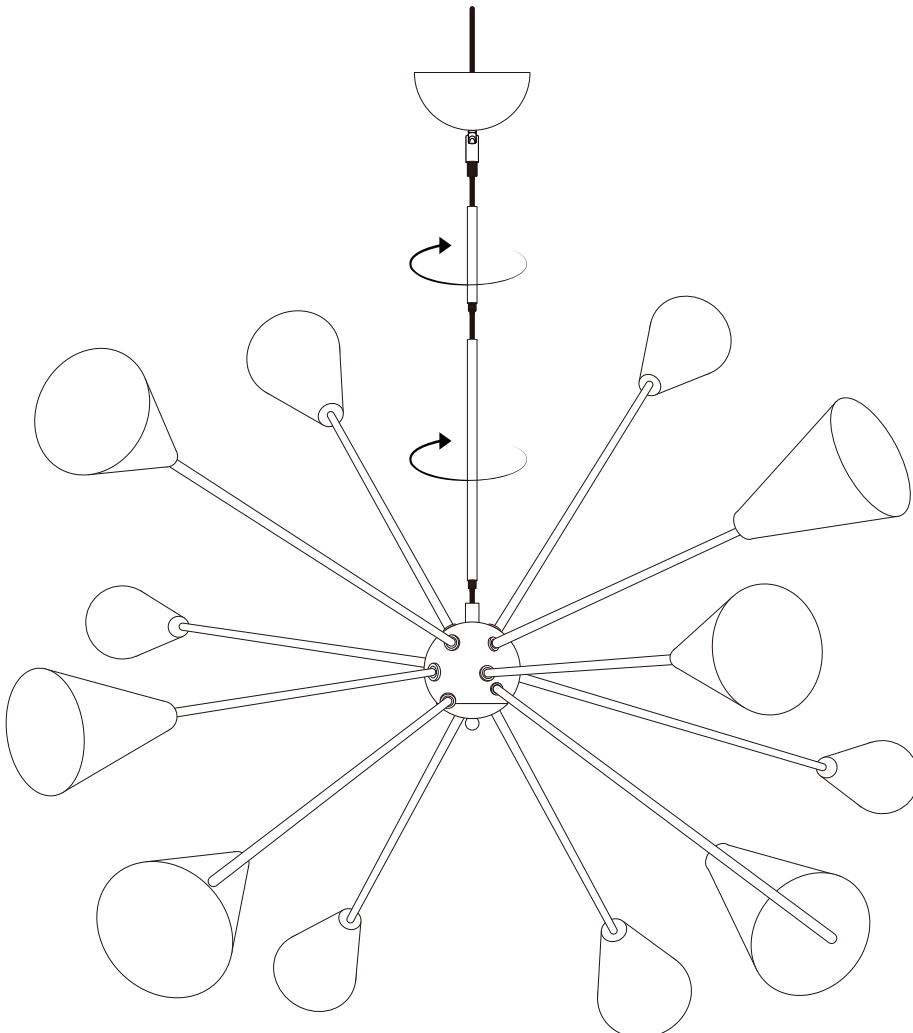
2. We offer 12 months guarantee. If you find any damaged or missing parts in transit, please feel free to contact us by email , we will solve it ASAP!



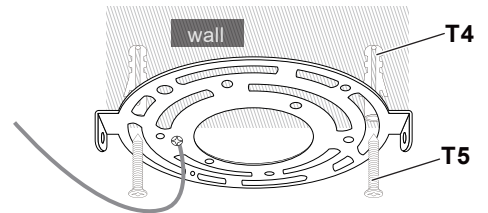
01 Fasten the snaps and tighten the 12 lamp arms



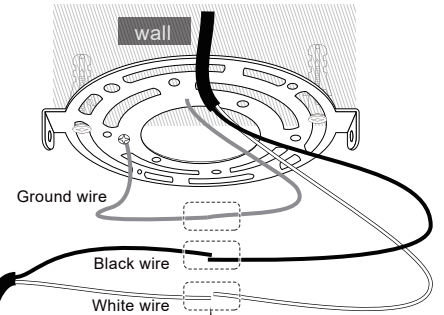
02 You can choose how many poles to install based on the hanging height you desire after tightening the lamp arms.



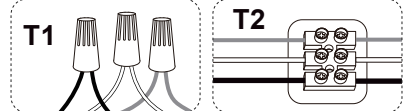
03 Screw the Mounting Bracket to the ceiling or ceiling box.(There are many gaps,you can screw it to the ceiling)



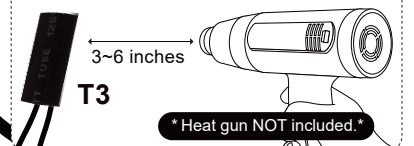
04 Fixture wires should be connected to ceiling wires by color, black wire to be attached to the black wire, white to white and ground wire to ground wire.



For your safety, you should use wire connector T1, T2 or T3 as you like. If you choose connector T1 you need to use electric tape for it.



Tips: 1.Hold the heat gun about 3~6 inches away from the tubing, and keep it moving back and forth. 2.Continue heating the tubing until it is tightly secured to the wire.



05 Fix the light to the ceiling

