



Buy it for looks. Buy it for life.®

## FAUCET DESCRIPTION

- Metal construction with chrome plated, LifeShine® brushed nickel or oil rubbed bronze finish
- Includes showerhead, arm and flange

## OPERATION

- Handle operates counterclockwise through a 270° arc with off at 6 o'clock and maximum hot at the 9 o'clock position. Shut off in clockwise direction
- Adjustable temperature limit stop to control maximum hot water temperature
- Pressure balancing mechanism maintains selected discharge temperature to  $\pm 3^\circ$

## FLOW

- Showerhead limited to 2.5 gpm max. (9.5 L/min)

## CARTRIDGE

- 1222 cartridge design
- Nonmetallic/nonferrous and stainless steel materials
- Accommodates back to back installations

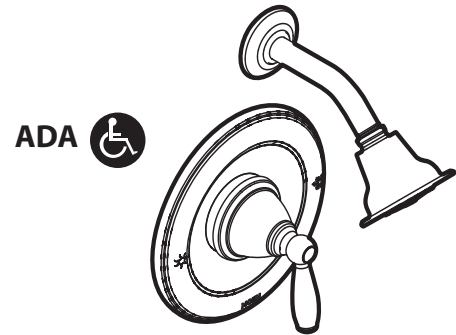
## STANDARDS

- Third party certified to meet CSA B-125, ASME A112.18.1M, ANSI A117.1 and all applicable requirements referenced therein

## WARRANTY

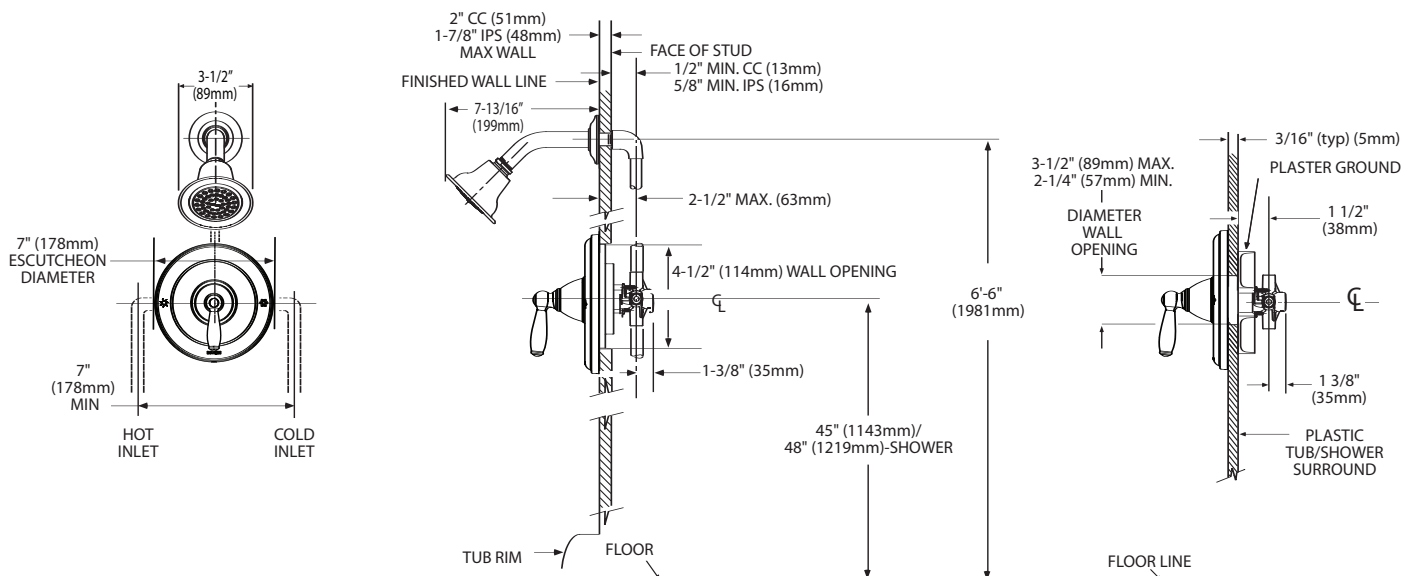
- Lifetime limited warranty against leaks, drips and finish defects to the original consumer purchaser
- 5 year warranty if used in commercial installations

# Specifications



## BRANTFORD™ POSI-TEMP® Single-Handle Shower (Trim Only)

**Models:** T2152, T2152BN, T2152ORB  
T62152 (Bulk pack -12 per carton)



## THICK WALL APPLICATION

## THIN WALL APPLICATION



## CRITICAL DIMENSIONS

(DO NOT SCALE)

## DESCRIPTION

- Brass construction
- 1/2" CC or IPS connections
- Pressure balancing, four port, cycle valve

## OPERATION

- Adjustable temperature limit stop to control maximum hot water temperature
- Pressure balancing mechanism maintain selected discharge temperature to  $\pm 2^{\circ}\text{F}$

## CARTRIDGE

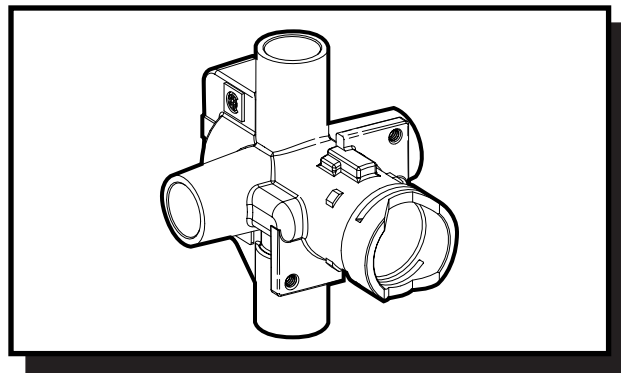
- 1222 cartridge design
- Nonmetallic/nonferrous and stainless steel materials
- Accommodates back to back installations

## STANDARDS

- Third party certified by CSA to meet CSA B-125, ASME A112.18.1M and all applicable requirements referenced therein

## WARRANTY

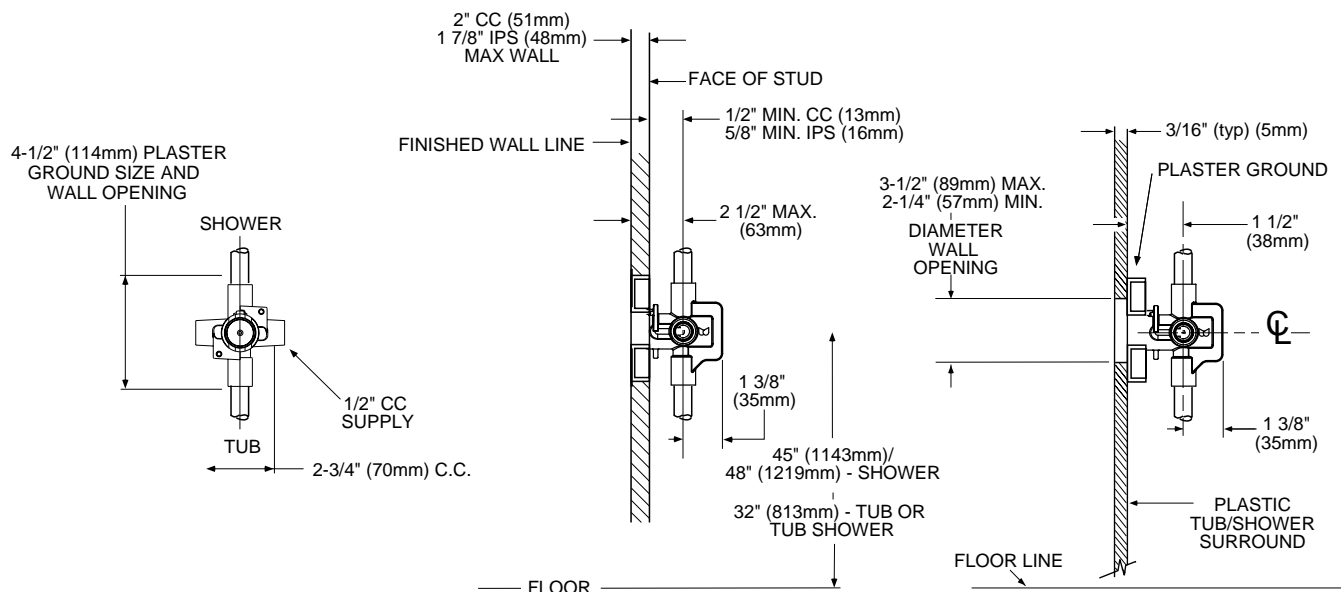
- Lifetime limited warranty against leaks, drips and finish defects to the original consumer purchaser
- 5 year warranty if used in commercial installations



**POSI-TEMP® VALVE**  
Pressure-Balancing Valve

**Models: 2520 (CC), 2510 (IPS) - Single Pack**  
**62320 (CC), 62300 (IPS) - Bulk Packed**  
(Bulk packed 12 per carton)

**NOTE: See reverse side**  
for illustrated parts



## CRITICAL DIMENSIONS

(DO NOT SCALE)