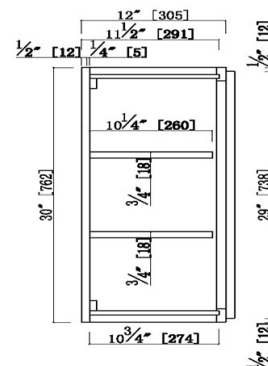
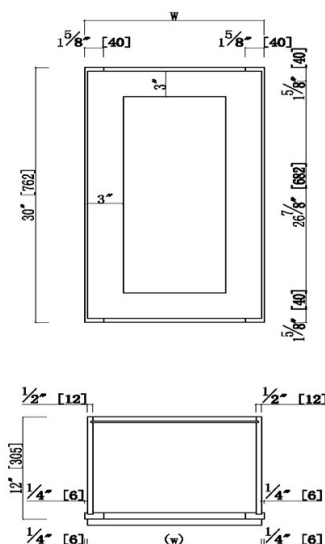


## Brookings Unassembled Shaker Tall Wall Kitchen Cabinet 15x30x12

White



W2130	21"	20.5"
W1830	18"	17.5"
W1530	15"	14.5"
W1230	12"	11.5"
Item Name	W	(w)

## SPECIFICATIONS

MATERIAL CONSTRUCTION:	Wood
WOOD SPECIES:	Maple
ASSEMBLED DIMENSIONS:	30" H x 15" L x 12" D
ASSEMBLED WEIGHT:	28.17 lbs.
KITCHEN CABINET TYPE:	Wall
MOUNTING TYPE:	Wall Mount
CONSTRUCTION TYPE:	Face Frame
HINGE STYLE:	Soft Close
DOOR STYLE:	1 HDF shaker door; reversible

DRAWER DIMENSIONS 1:	N/A
DRAWER DIMENSIONS 2:	N/A
DRAWER DIMENSIONS 3:	N/A
DWR BOX MATERIAL:	N/A
DWR CONSTRUCTION:	N/A
DWR GLIDE:	N/A
FAKE DWR QTY:	0
FAKE DWR LOCATION:	N/A

WARRANTY:	1-Year limited warranty
LEGAL FOR SALE IN CALIFORNIA:	Yes
CARB COMPLIANT:	CARB Phase 2
TSCA TITLE IV COMPLIANT:	Yes

NUMBER OF SHELVES:	2
SHELF STYLE:	Flat
ADJUSTABLE SHELVES:	Yes
SHELF ADJUSTIBILITY INCREMENTS:	2.5"
SHELF DIMENSIONS:	13.5" W x 10.25" D
SHELF THICKNESS:	0.75"
SHELF MATERIAL:	Plywood
FACE FRAME MATERIAL:	Solid Maple
SIDES MATERIAL:	Plywood
BOTTOM MATERIAL:	Plywood
BACK PANEL MATERIAL:	Plywood
BACK BRACE MATERIAL:	Wood
TOE KICK INSET WIDTH:	N/A
TOOLS NEEDED FOR INSTALLATION:	Phillips Screwdriver Mallet Wood Glue
FASTENER TYPE:	Wood Screw



TYPE:  
JOB:  
ORDER CODE:  
APPROVALS: