

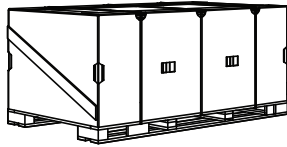


**IMPORTANT:** Read the Operator's manual thoroughly, and follow safe operating practices.

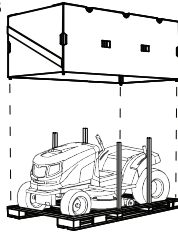


**WARNING:** When working with the product, wear the required personal safety equipment.

1A



1B

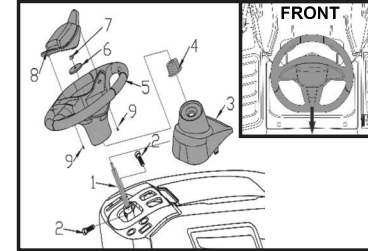


## 1. OPENING THE PACKAGING

The machine is shipped partially dismantled and packaged in a crate to protect it during transport. The packaged machine will appear as in Fig 1A.

- Remove all shrink wrap and cut the three plastic straps that surround the package.
- Lift off the corrugated exterior cover assembly and discard the four wooden support posts. (Fig 1B)
- Review contents to ensure all required parts and tools are present.

**NOTE** WEAR HEAVY GLOVES.

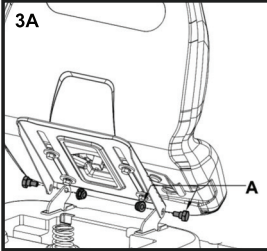


**NOTE** PAY ATTENTION TO THE ORIENTATION OF THE PARTS.

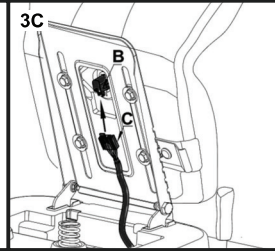
## 2. FITTING THE STEERING WHEEL

- Fit the shaft (1) onto the couplings and tightening the screw M8x25 (2) (Use the open end wrench 8-10 in accessories tools).
- Fit the steering shaft cover (3).
- Insert the splined hub (4) to shaft (1), mounting steering wheel (5), spacer (6) and tightening nut M8 (7) (Use the open end wrench 13-15 in accessories tools).
- Insert the steering wheel cover (8) into steering wheel and tighten two screws ST4,8x16 (9) (Use the Phillips screwdriver in accessories tools).

3A



3C

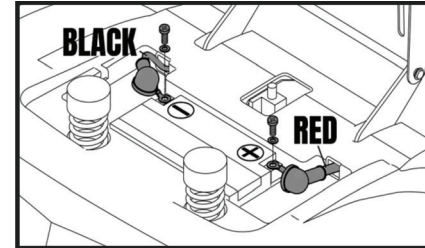


## 3. MOUNT THE SEAT AND CONNECT THE OPERATOR PRESENCE SWITCH

- Unfasten the two M8 nuts and bolts (A) from the Seat Brackets located on top of the mower. (Use the 13-15 open-end wrench in accessories tools kit)
- Mount the Seat onto the Seat Brackets using the released two M8 nuts and bolts (A) as illustrated.
- Connect the Wire Harness (B) to the Operator Presence Switch (C) located under the seat as illustrated.

**NOTE** BE SURE THAT THE CONNECTION IS COMPLETE.

**IMPORTANT!** THE TOTAL WEIGHT (TRAILER AND LOAD, INCLUDING THE OPERATOR) MUST NOT EXCEED 136 KG (300 LBS.). SEE COMPLETE NOTES UNDER REGULATIONS FOR TOWING IN THE OPERATOR'S MANUAL.



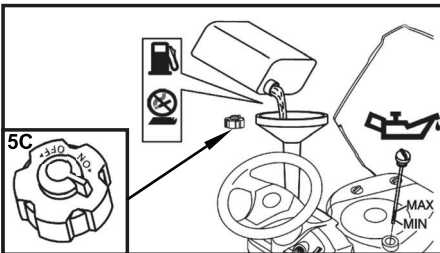
## 4. CONNECTING THE BATTERY

- Fit the battery in its housing.
- Connect the battery connectors to the machine connection leads and tighten the two screws. Then cover the protective cap for the two wires in place. (Use the open-end wrench 8-10 and cross screwdriver in accessories tools)
- Secure the battery with the small rubber strap.

**NOTE** POSITION THE BATTERY WITH THE POLARITIES (+) AND (-) AS INDICATED.

**HAZARD!** SULFURIC ACID IS POISONOUS. THE ELECTROLYTIC FLUID IS A SOLUTION OF SULFURIC ACID.

**HAZARD!** SULFURIC ACID IS CORROSIVE. SULFURIC ACID CAN CAUSE BLINDNESS OR SEVERE BURNS.



## 5. CHECKING THE FUEL AND OIL

### OIL:

- Locate the machine on level ground.
- With the engine off, check the oil level.
- Use oil grade according to the instructions in the engine manual.
- Fill between the MIN and MAX marks on the dipstick.

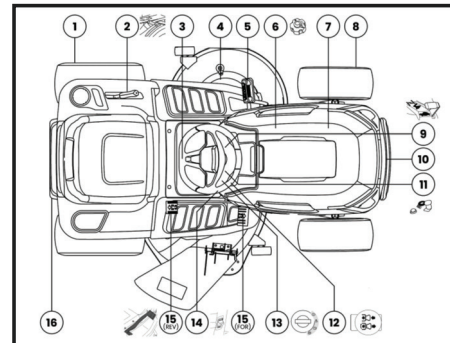
### FUEL:

- Refuel using a funnel, but do not completely fill the tank.
- The tank's capacity is approximately 7.5 liters.
- Before operating the mower, open the Fuel Shut Off Valve on the fuel cap to ON (Fig 5C).

**IMPORTANT!** THE MACHINE IS SHIPPED WITHOUT LUBRICATING OIL IN THE ENGINE.

**CAUTION!** IRREPARABLE DAMAGE TO THE ENGINE: FILL UP WITH OIL BEFORE STARTING THE ENGINE.

USE 4-STROKE AUTOMOTIVE DETERGENT OIL. SAE 30 (5° TO 35° C), SAE 5W-30 OR 10W-30 (-15° TO + 5° C), SYNTHETIC OILS 5W-30 OR 10W-30 (-25° TO + 35° C)



## 6. STARTING THE ENGINE

- Open the Fuel Shut Off Valve (5C) on Fuel Cap (6) to ON.
- Close the Engine Cover (7).
- Use Cutting Height Adjustment Lever (2) to lift the cutting deck as high as possible.
- Use Blade Start / Stop Knob (12) and disengage the blades.
- Shift the Drive Engagement (15) to neutral N.
- Depress the Brake Pedal (5) and then engage the Park Brake Lever (14).
- When starting from cold, move the Throttle Lever (9) to the CHOKE position shown on the label.
- If the engine is already warm, position the Throttle Lever (9) between SLOW and FAST.
- Put in the Ignition Key (13) and turn to ON to make electrical contact and engage the starter motor, then turn to START to start the engine.
- Release the Ignition Key (13) once the engine has started.
- After the engine has started, move the Throttle Lever (8) to SLOW.

