

Majestic - Single Handle Pressure Balanced Tub & Shower Set



- * Pressure Balanced & Ceramic (Type F)
- * Solid Brass Waterway Construction with 1/2" -14 NPT Connection
- * Integral Stops, Diverter Tub Spout
- * 4-7/8" Three Function Plastic Shower Head, Zinc Handle
- * Stainless Steel Shower Arm
- * Stainless Steel Escutcheon
- * Zinc Die Cast Tub Spout
- * Shower Head Flow Rate: 1.5GPM @ 80PSI
- * Tub Spout Flow Rate: 6.5GPM @ 80PSI
- * 100% Pressure System Tested
- * Lifetime Limited Warranty; 5 year warranty from date of purchase for Commercial users.

Project / Job Name	
Architect / Engineer	
Contractor	
Model	
Quantity	

Model No. :



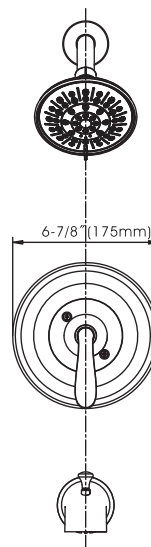
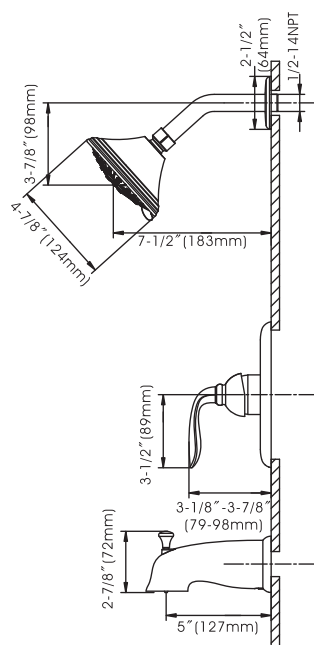
211-6623 (CH)
(Shown Model)



211-6624 (BN **Spotless PVD**)



211-6625 (ORB)



Cartridge (Type F)



Product Compliance:

- ASME A112.18.1 / CSA B125.1
- ANSI A117.1 (ADA)
- ASSE 1016

Majestic - Single Handle Pressure Balanced Tub & Shower Set



- * Pressure Balanced & Ceramic (Type F)
- * Solid Brass Waterway Construction with 1/2" -14 NPT Connection
- * Integral Stops, Diverter Tub Spout
- * 4-7/8" Three Function Plastic Shower Head, Zinc Handle
- * Stainless Steel Shower Arm
- * Stainless Steel Escutcheon
- * Zinc Die Cast Tub Spout
- * Shower Head Flow Rate: 1.5GPM @ 80PSI
- * Tub Spout Flow Rate: 6.5GPM @ 80PSI
- * 100% Pressure System Tested
- * Lifetime Limited Warranty; 5 year warranty from date of purchase for Commercial users.

Project / Job Name	
Architect / Engineer	
Contractor	
Model	
Quantity	

Model No. :



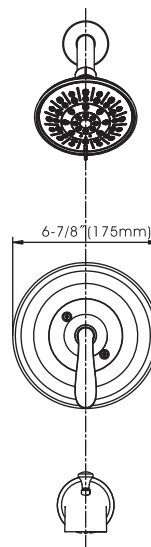
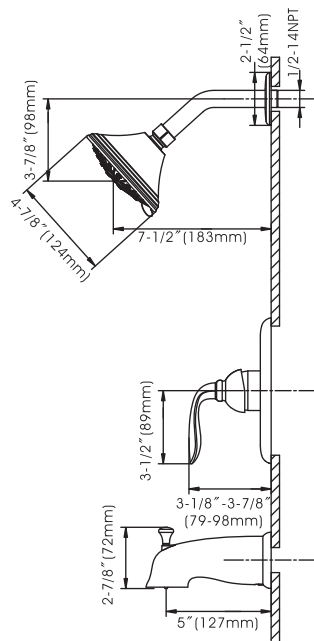
211-6623 (CH)



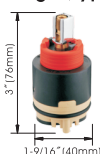
211-6624 (BN **Spotless PVD**)
(Shown Model)



211-6625 (ORB)



Cartridge (Type F)



Product Compliance:

- ASME A112.18.1 / CSA B125.1
- ANSI A117.1 (ADA)
- ASSE 1016

Compass Manufacturing International LLC

www.cmiproduct.com

6702 Enterprise Drive, Louisville, Kentucky 40214

Toll Free Number: 800-626-3525

Majestic - Single Handle Pressure Balanced Tub & Shower Set



- * Pressure Balanced & Ceramic (Type F)
- * Solid Brass Waterway Construction with 1/2" -14 NPT Connection
- * Integral Stops, Diverter Tub Spout
- * 4-7/8" Three Function Plastic Shower Head, Zinc Handle
- * Stainless Steel Shower Arm
- * Stainless Steel Escutcheon
- * Zinc Die Cast Tub Spout
- * Shower Head Flow Rate: 1.5GPM @ 80PSI
- * Tub Spout Flow Rate: 6.5GPM @ 80PSI
- * 100% Pressure System Tested
- * Lifetime Limited Warranty; 5 year warranty from date of purchase for Commercial users.

Project / Job Name	
Architect / Engineer	
Contractor	
Model	
Quantity	

Model No. :



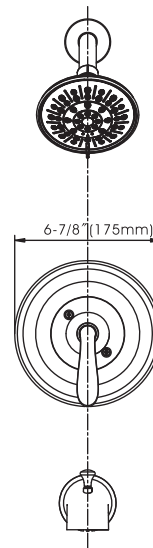
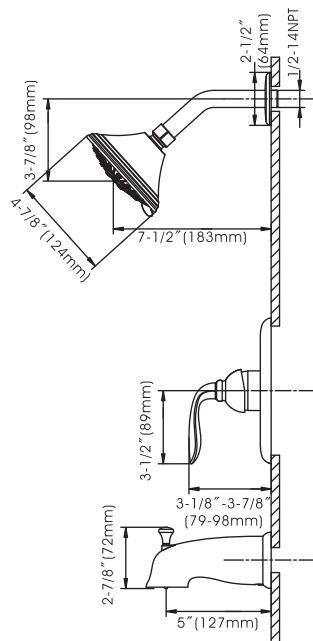
211-6623 (CH)



211-6624 (BN **Spotless PVD**)



211-6625 (ORB)
(Shown Model)



Cartridge (Type F)



Product Compliance:

- ASME A112.18.1 / CSA B125.1
- ANSI A117.1 (ADA)
- ASSE 1016

Compass Manufacturing International LLC

www.cmiproduct.com

6702 Enterprise Drive, Louisville, Kentucky 40214

Toll Free Number: 800-626-3525

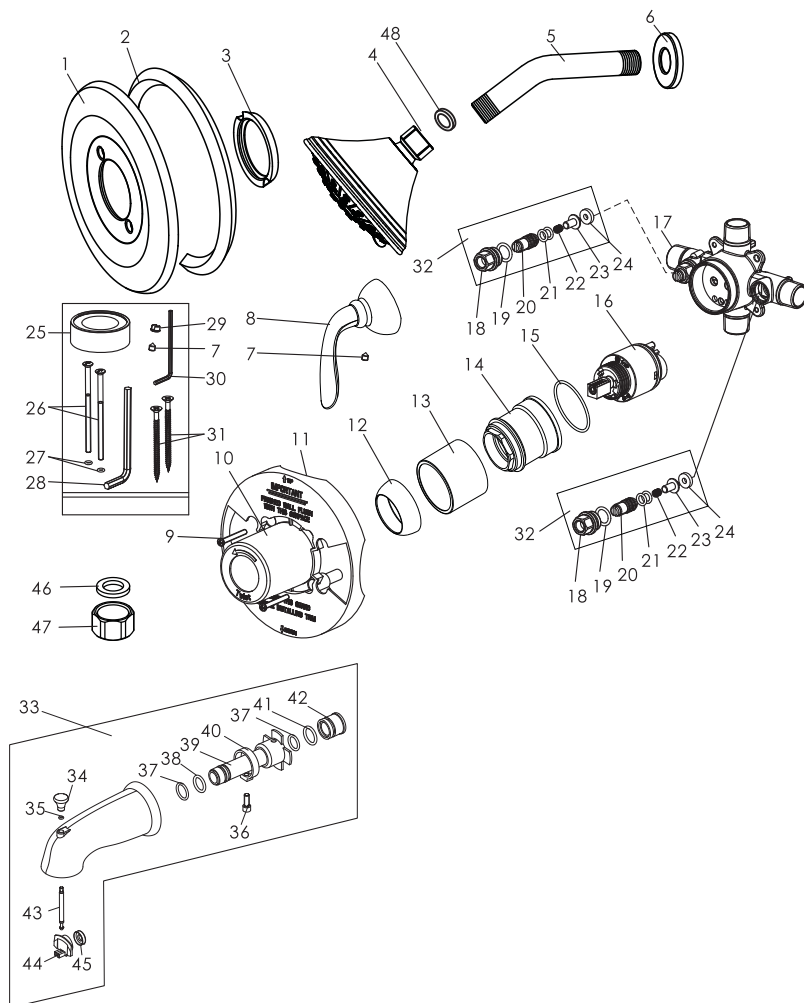
Majestic - Single Handle Pressure Balanced Tub & Shower Set

Model No. :

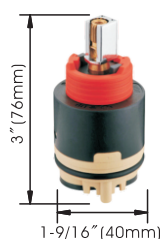
211-6623 (Polished Chrome)

211-6624 (Brushed Nickel **Spotless PVD**)

211-6625 (Oil-Rubbed Bronze)



Cartridge (Type F)



No.	Part Name	Material
1	Escutcheon	Stainless Steel
2	Escutcheon Gasket	Sponge
3	Sealing Ring	Rubber
4	Shower Head	Plastic
5	Shower Arm	Stainless Steel
6	Shower Arm Flange	Stainless Steel
7	Set Screw	Stainless Steel
8	Handle	Zinc
9	Screw	Stainless Steel
10	Protective Sleeve	Plastic
11	Plaster Guard	Plastic
12	Trim Cap	Plastic
13	Cartridge Sleeve	Zinc
14	Lock Nut	Brass
15	O-ring	Rubber
16	Cartridge	Ceramic
17	Valve Body	Brass
18	Integral Stop Lock Nut	Brass
19	O-ring	Rubber
20	Adjuster	Brass
21	O-ring	Rubber
22	Spring	Stainless Steel
23	Stopper	Brass
24	Sealing Washer	Rubber
25	Teflon Tape	Plastic
26	Screw	Stainless Steel
27	O-ring	Rubber
28	Allen Wrench	Steel
29	Handle Button	Plastic
30	Allen Wrench	Steel
31	Screw	Stainless Steel
32	Stop Valve	Brass+Rubber+Stainless Steel
33	Spout	Zinc
34	Knob	Zinc
35	O-ring	Rubber
36	Screw	Stainless Steel
37	O-ring	Rubber
38	O-ring	Rubber
39	Plastic Core	Plastic
40	Ring	Zinc
41	O-ring	Rubber
42	Core Cover	Plastic
43	Pulling Core	Brass
44	Sealing Plate	Plastic
45	Washer	Rubber
46	Washer	Rubber
47	End Cap	Stainless Steel
48	Washer	Rubber

Technical Support: warranty@cmiproduct.com
Hour of Operation: Mon - Fri 8:30 a.m - 5:00 p.m. EST