

Installation instructions

Refrigerator water filter

A replacement for the following water filters:

Samsung® filters

DA29-00003G, DA29-00003D, DA29-00003B, DA29-00003A, DA29-00003A-B, DA2900003A, DA2900003B, TADA29-00003A, TADA29-00003B, DA97-06317A, DA61-00159, DA61-00159A, DA61-00159A-B, HAFUCU1, HAFUCU1/XAA, HAFIN2/EXP, WF289, WSS-1



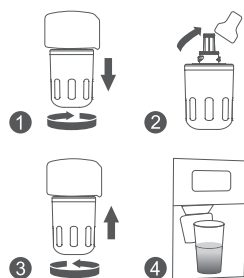
Tested and Certified by NSF International against **NSF/ANSI Standard 42** in model EFF-6011S for the reduction of the claims specified on the Performance Data Sheet, and to **NSF/ANSI 372 (≤0.25% lead)**.

Installation instructions

Before installation:

- Shut off the cold-water supply to the refrigerator before installation. Turn on the refrigerator water dispenser to release water pressure, letting water drain from the pipe completely.
- It is normal for black carbon fines (particles) to appear on the outside of your filter. This happens when the filter is jarred in shipping. It is safe to simply wipe it off.
- The filter connectors are larger to prevent leaks. You might have to twist the filter hard to make sure the connection is secure.

1. Locate existing filter and remove it by turning it counter clockwise as shown in the graphic.
2. Holding the new filter in your hands, carefully remove the packaging and sanitary end-cap from the new filter.
3. Apply slight upward pressure and rotate the filter clockwise. Ensure filter is fully installed in refrigerator head a full 1/4 turn. This is required to activate the internal valve inside the refrigerator. If the filter is not turned a full 1/4, the valve will not fully open and may cause the water flow to be slow, or even cause the valve to make a chattering noise during use.
4. Dispense water into glass looking for good water flow. If flow



6011S-42 | V040

is slow, remove and reinstall filter ensuring that the filter is a full 1/4 turn.

- Note:** Initial flow rate may be slower than expected. Full flow rate should be restored within 24-36 hours.
5. Check filter one more time for any leaks.
 6. Run water from the dispenser for 5 minutes at 0.5 gpm (about 2.5 gallons) to clear the system and prevent sputtering.

Resetting your filter indicator:

Note: These are the most common filter reset instructions. If the instructions don't work for your refrigerator brand, see the documentation that came with your refrigerator.

Refrigerator brand	Instructions
Samsung® systems	Press and hold the ICE TYPE and CHILD LOCK buttons for three seconds. The water filter indicator should turn green. Note: Only hold these buttons for three seconds. Holding these buttons for five seconds cancels the reset. If you cancel the reset, repeat the procedure.

Storage and maintenance:

- Replace your filter every 6 months or 300 gallons to prevent bacteria and fungus growth in your filter, supply lines, and storage tank.
- Keep your unused filters in a cool, dark, and dry place until you need them.
- If you do not use your water dispenser for more than four days, run two gallons of water before using it to prevent bad tasting water.

Frequently asked questions:

- Q:** Why is it difficult to twist the new filter into the filter housing?
A: The connector may expand because of water pressure. Therefore, it is recommended you push the new filter in with a little bit of force, but not too hard. Then turn it clockwise.
- Q:** Do I need to flush the filter after installation?
A: After installation, it is highly recommended you run water for a few minutes before using. Water filters are made from advanced coconut carbon block, so there are some carbon fines in the filter. Flushing removes the carbon fines to produce clean water.
- Q:** Must the filter be changed every 6 months?
A: Yes, you must replace the filter every six months or sooner if water flow is reduced or if there is heavy sediment / rust present. Over-used filters will degrade the filtration performance.

⚠ Warning:

To reduce the risk of property damage due to water leakage, this filter **MUST** be installed in accordance with the manufacturer's specifications and instructions. This filter unit must be replaced every 300 gallons or 6 months. Failure to follow instructions and operating specifications will void your warranty. Further, manufacturer assumes no responsibility or liability for damages arising out of misuse of the product. Samsung® is a registered trademark of Samsung Electronics Co.,Ltd. Samsung® is used for reference purposes only.

*The service life mentioned above is subject to chlorine reduction. Actual result varies according to the local water quality.

Performance data sheet

System Model No.: **EFF-6011S**

Operating specifications:

Operating Temperature: 33 -100°F/0.6 - 38°C
Working Pressure: 20 -100 psi/140 - 689 kPa
Rated Capacity: 300 gallons/1,137 litres
Flow Rate: 0.5 gpm/1.9 lpm

Substance reduction:

The system has been tested and certified by the NSF International according to NSF/ANSI Standard 42 for the reduction of the substances listed below. The concentration of the indicated substances in water entering the system was reduced to a concentration less than or equal to the permissible limit for the water leaving the system, as specified by NSF/ANSI Standard 42. While testing was performed under standard laboratory conditions, actual performance may vary.

Substance	Inf. Average	NSF Specified Challenge Concentration	Ave. % Reduction(%)	Average Product Water Concentration	Max Permissible Product Water Concentration	NSF Reduction Requirements	NSF Test Report
Chlorine Taste and Odor	2.1 mg/L	2.0mg/L±10%	97.0%	0.063mg/L	N/A	≥50%	J-00295502



Do not use with water that is microbiologically unsafe or of unknown water quality without adequate disinfection before or after the system. Systems certified for cyst reduction may be used with disinfected water that may contain filterable cysts.

Manufacturer Technical Support

Tel: 1-888-352-3558 (U.S.)
E-mail: service@water-filter.com



Made in China V040
Qingdao Ecopure Filter Co., Ltd.