

# INSTALLATION GUIDE

## ZPFL5215DCFMLED

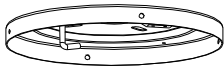
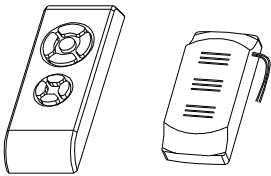


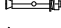



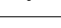
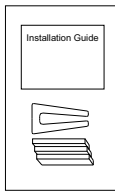
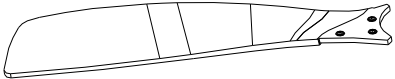
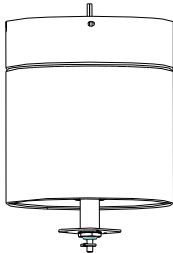
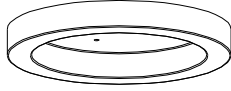
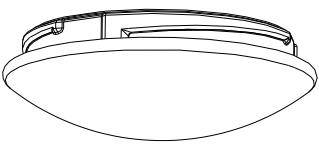
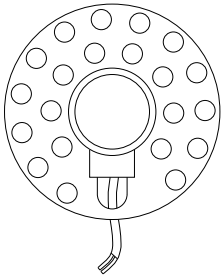
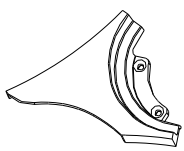
# Cautions and Warnings

- **READ THIS ENTIRE MANUAL CAREFULLY BEFORE BEGINNING INSTALLATION. SAVE THESE INSTRUCTIONS.**
- Use only **ExBrite** replacement parts.
- To reduce the risk of personal injury, attach the fan directly to the support structure of the building according to these instructions, and use only the hardware supplied.
- To avoid possible electrical shock, before installing your fan, disconnect the power by turning off the circuit breakers to the outlet box and associated wall switch location. If you cannot lock the circuit breakers in the off position, securely fasten a prominent warning device, such as a tag, to the service panel.
- All wiring must be in accordance with national and local electrical codes and ANSI/NFPA 70. If you are unfamiliar with wiring, use a qualified electrician.
- To reduce the risk of personal injury, do not bend the blade attachment system when installing, balancing, or cleaning the fan. Never insert foreign objects between rotating fan blades.
- To reduce the risk of fire, electrical shock, or motor damage, do not use a solid-state speed control with this fan. Use only **ExBrite** speed controls.

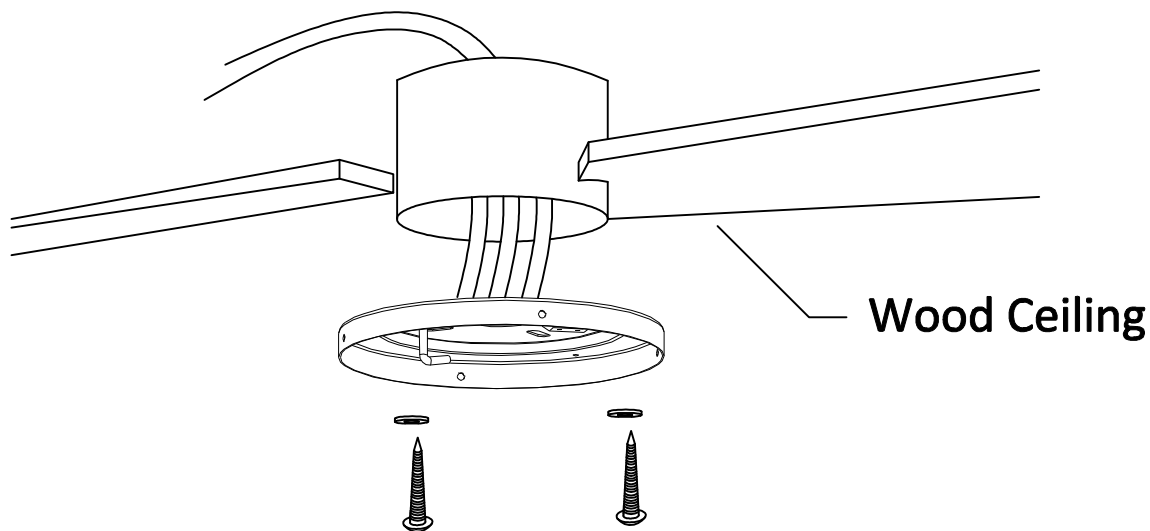
**NOTE:** The important safety precautions and instructions appearing in the manual are not meant to cover all possible conditions and situations that may occur. It must be understood that common sense and caution are necessary factors in the installation and operation of this fan.

## Parts Inventory

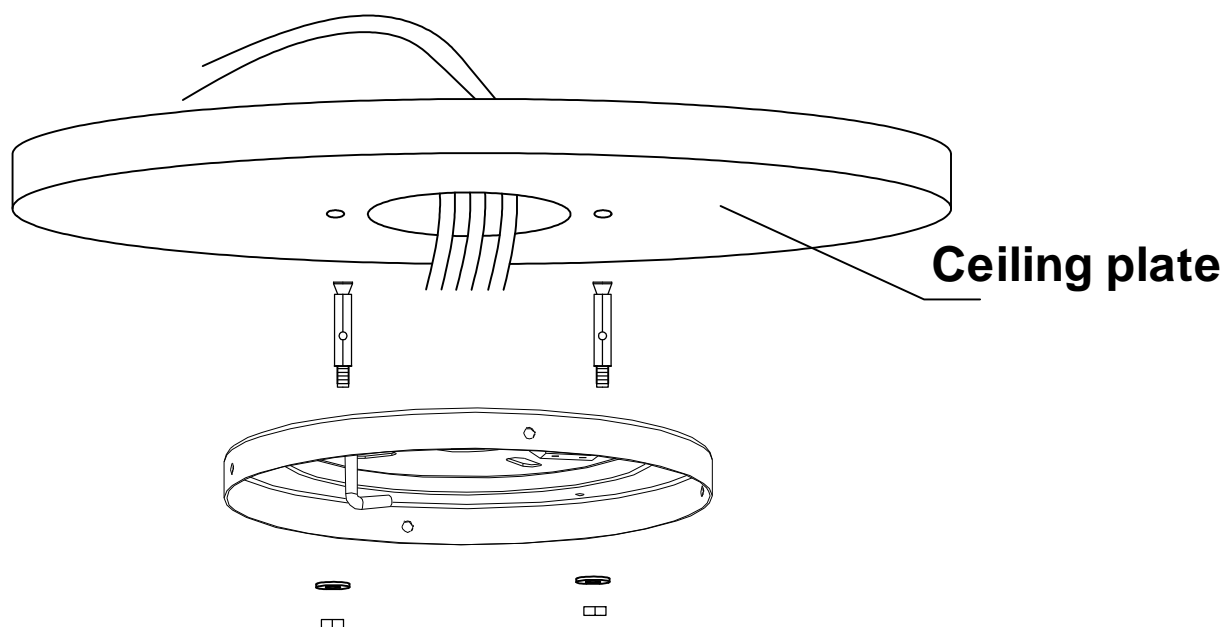
Carefully open the packaging. Remove items from Styrofoam inserts. Remove motor housing and place on carpet or Styrofoam to avoid damage to finish. Check against parts inventory that all parts have been included.

		 x4  x4  x2  x7  x10  x10  x5  <b>Balance pieces x1</b>
Ceiling plate x1	Remote control x1	Spiral package
		
Blade x3	Motor x1	Lamp panel x1
		
Glass shade x1	LED light source x1	Leaf Fork X3

## Step1: Installing the Hanger Bracket



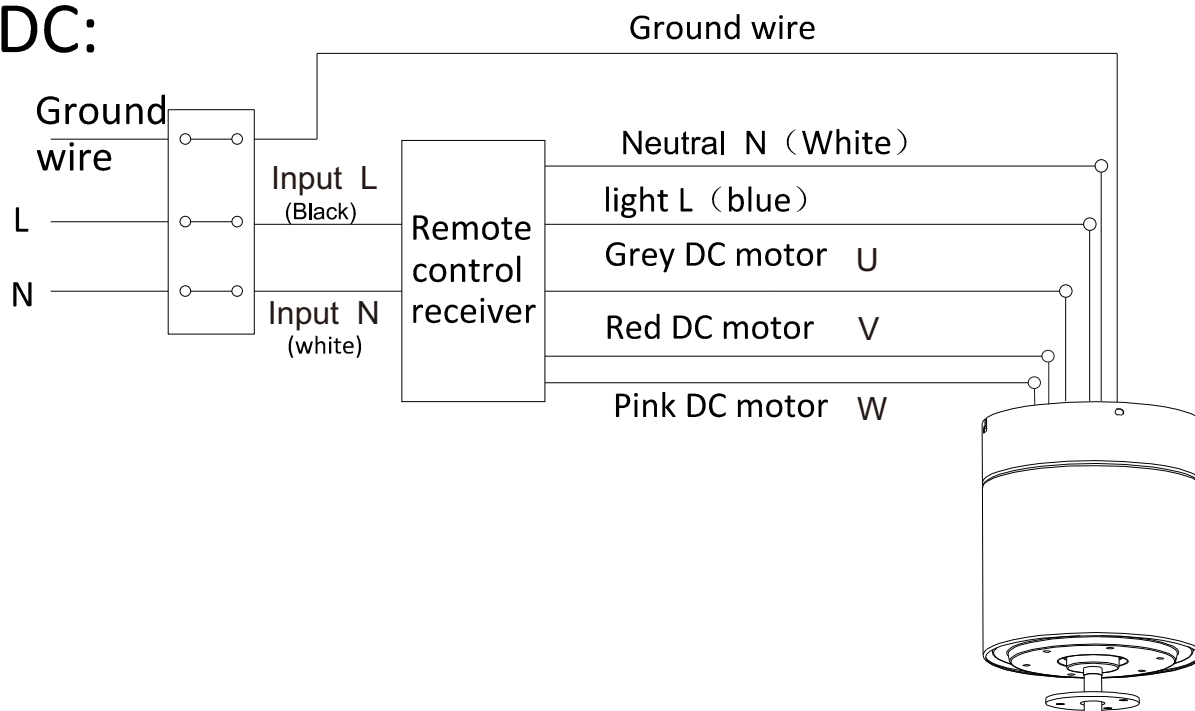
**Use self-tapping screws to lock the hanger to the wood ceiling**



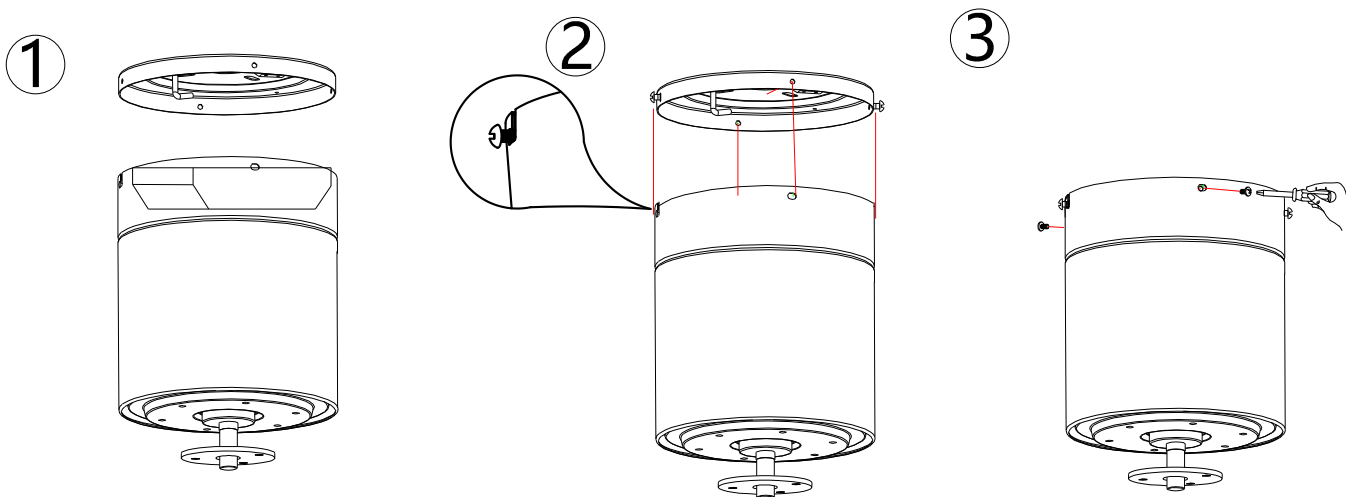
**Please drill  $\phi 8\text{mm}$  hole on the concrete ceiling, and insert the bolt.  
Align bracket with the hole, then tighten with nut.**

## Step2: Remote control connection

DC:

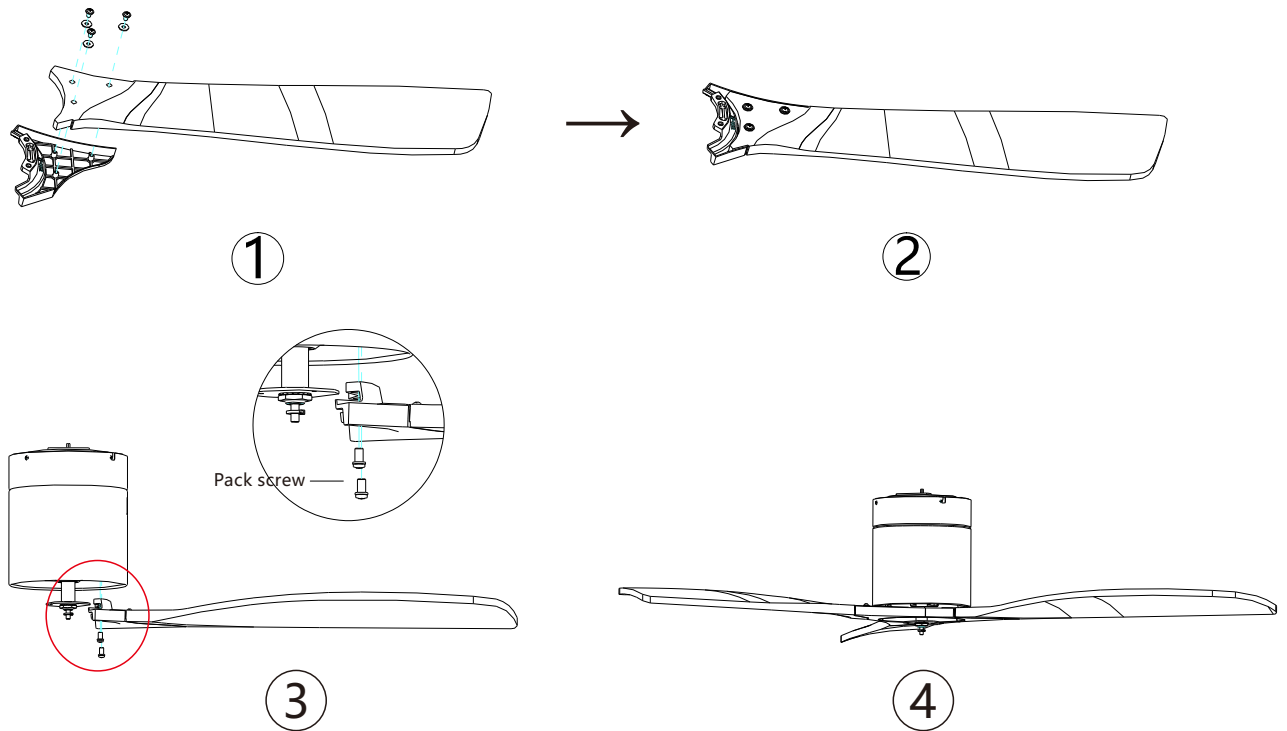


Receiver place: Hook the motor on the left hook, and then conduct wiring



- 1.The remote control receiver is wired according to the diagram above.  
After connecting, put the remote control receiver on the motor
- 2.Align the latch on the top of the motor with the screw on the ceiling plate and turn it to the right
- 3.Use screws to lock the motor and ceiling plate

## Blade Assembly

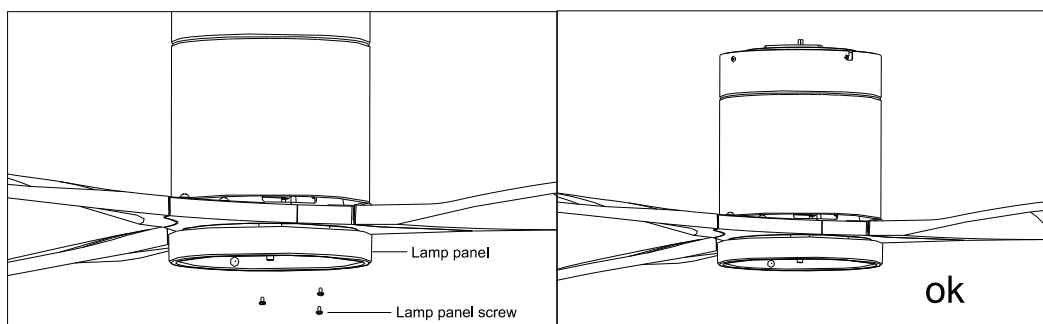


Align the blade holes with the motor screw holes, tighten the screw and secure all blades.

Place a paper pad on each screw and then secure the blade arm to the blade.

Note: Tighten the blade screw twice

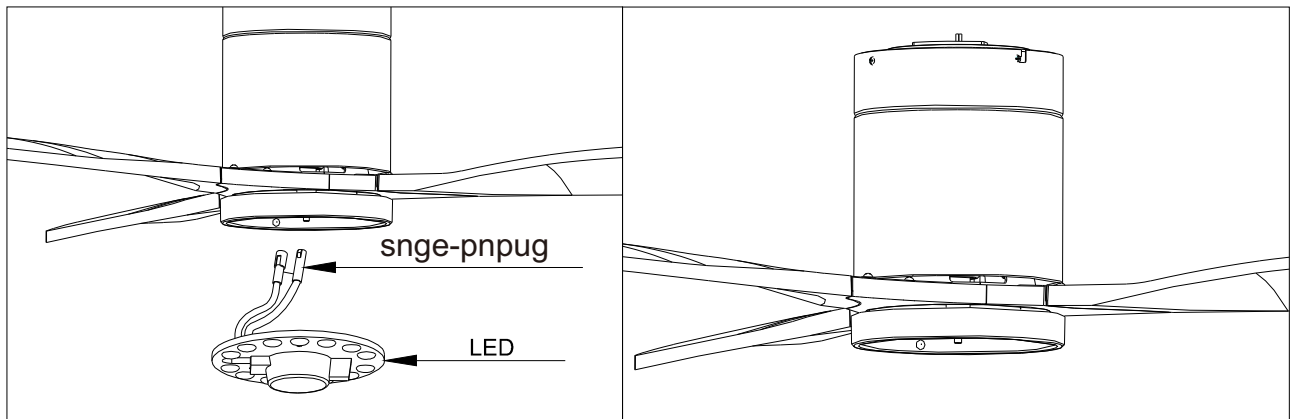
## LED Pan Assembly



Unscrew a set screw. Attach the LED pan up to the bottom of the fan by inserting the other two set screw heads into key hole slots, rotate it to place, then secure the previous set screw by aligning screw hole and the hole at the bottom of the fan, tighten the rest two set screw to secure LED pan.

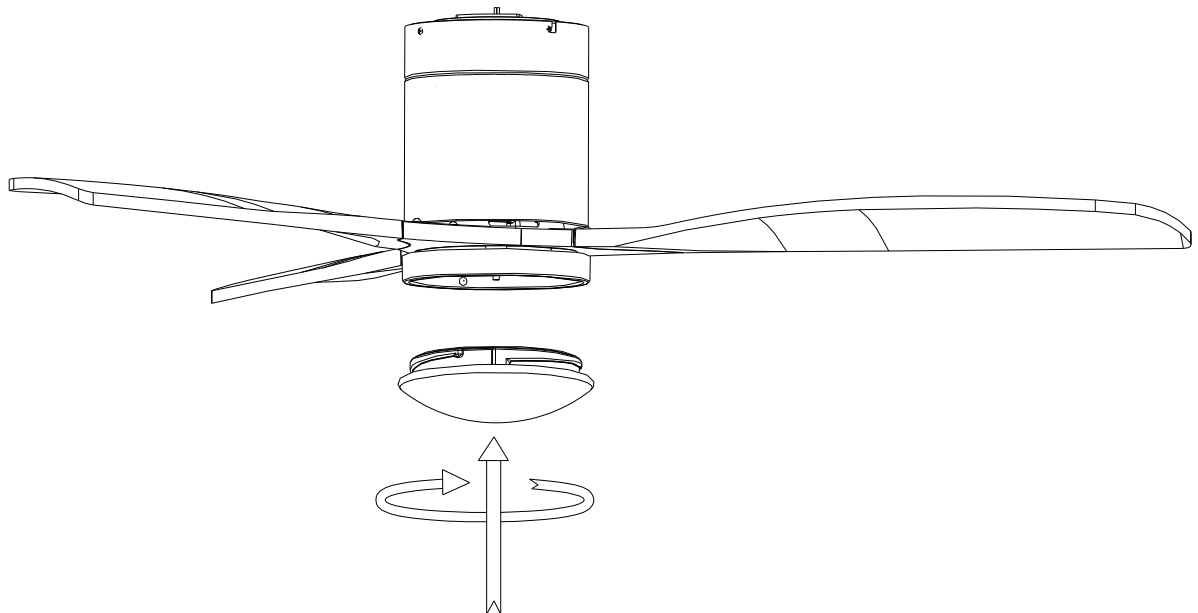
NOTE: While install or remove the LED pan, please keep the insulation pads intact carefully. Turning the set screws over-tightly or fast will damage the insulation pads.

## Lamp Shade Assembly



Restore the cover and the lamp shade back to the LED pan.

## Decorative Pan Inventory



Turn the glass lampshade to lock the lamp pan