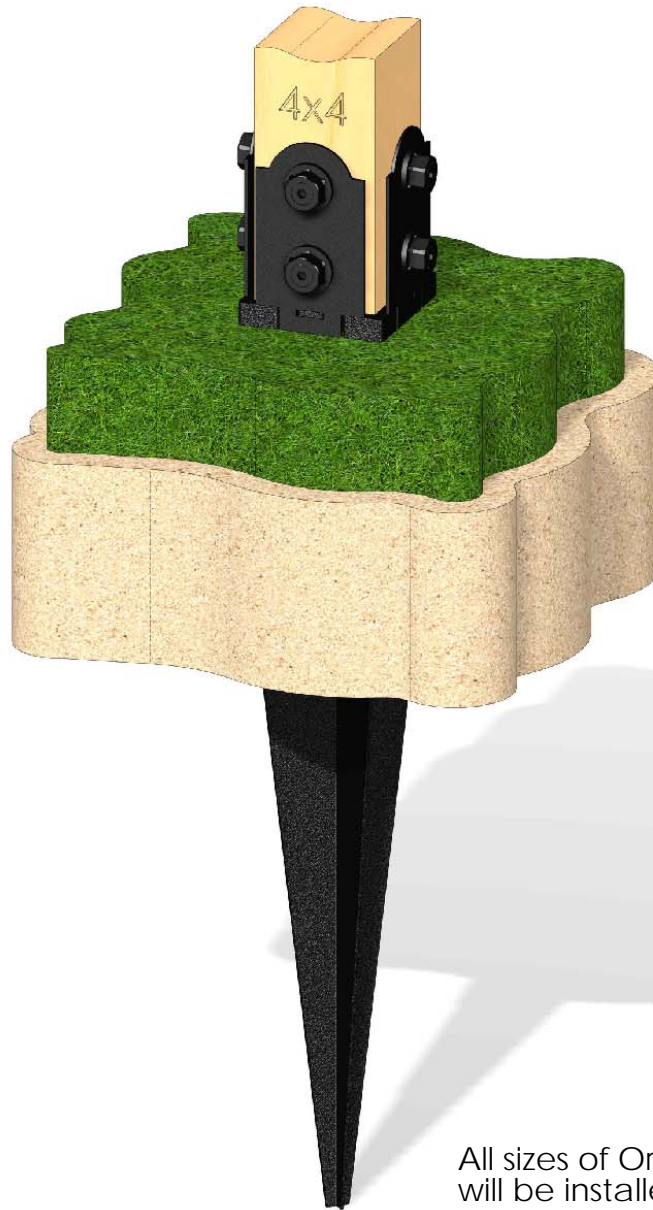


DESIGN

PURCHASE

CONSTRUCT

ENJOY



Installation Instructions,
4x4 Post Anchor Kit (4x4-OPAK-LS) (56632)
6x6 Post Anchor Kit (6x6-OPAK-LS) (56633)
8x8 Post Anchor Kit (8x8-OPAK-LS) (56634)

All sizes of Ornamental Post Anchors
will be installed the same.

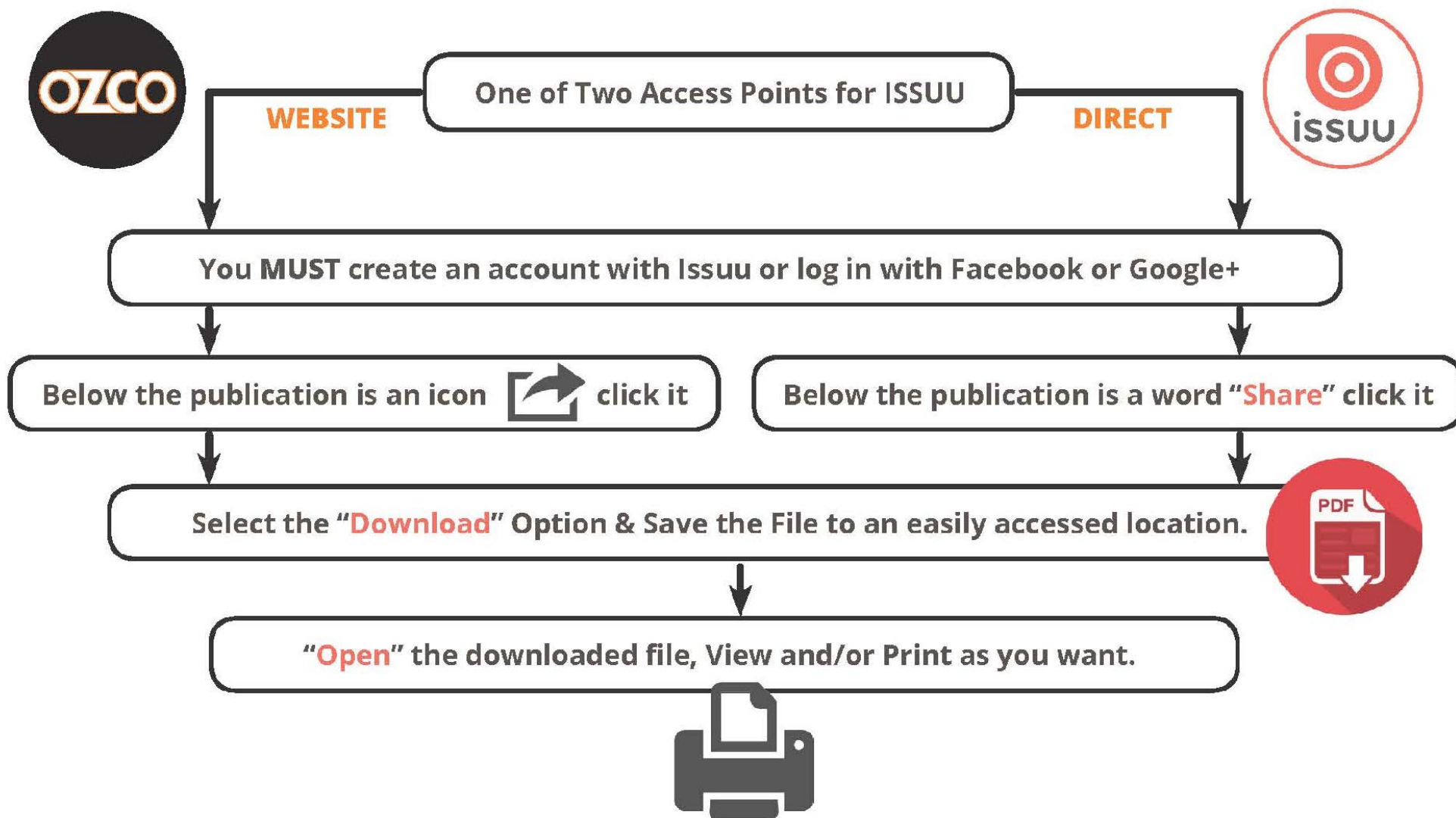


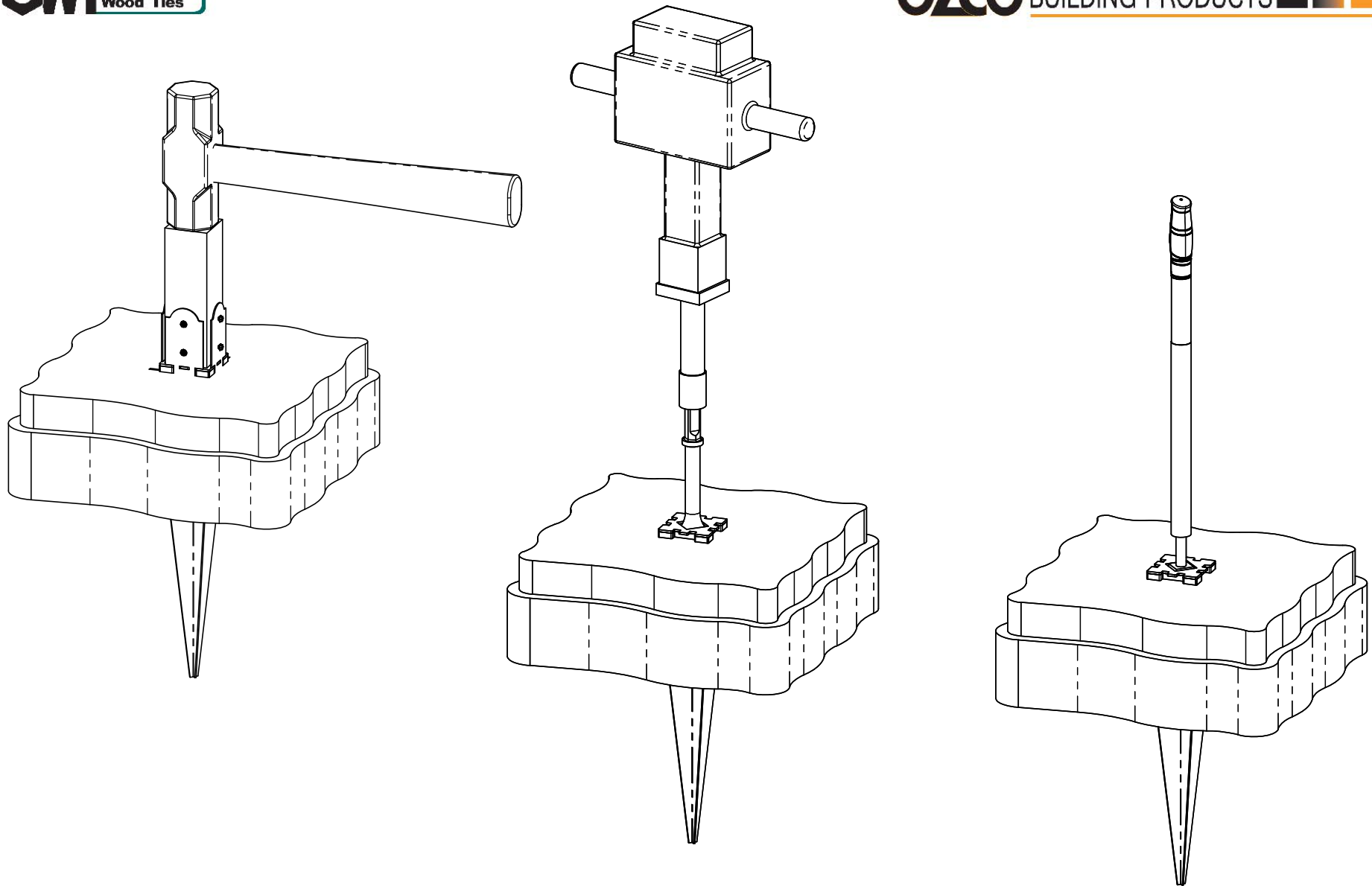
OZCO BUILDING PRODUCTS ■ ■ ■



Printing Documents from ISSUU

Unfortunately, there is currently no way to print content directly through issuu. To print a publication, you will need to download it and print it from your computer.



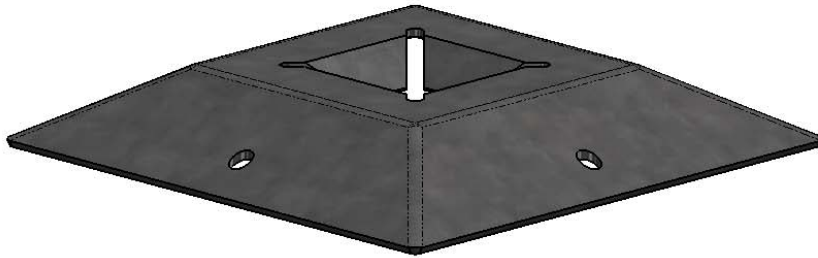


Choose your installation method

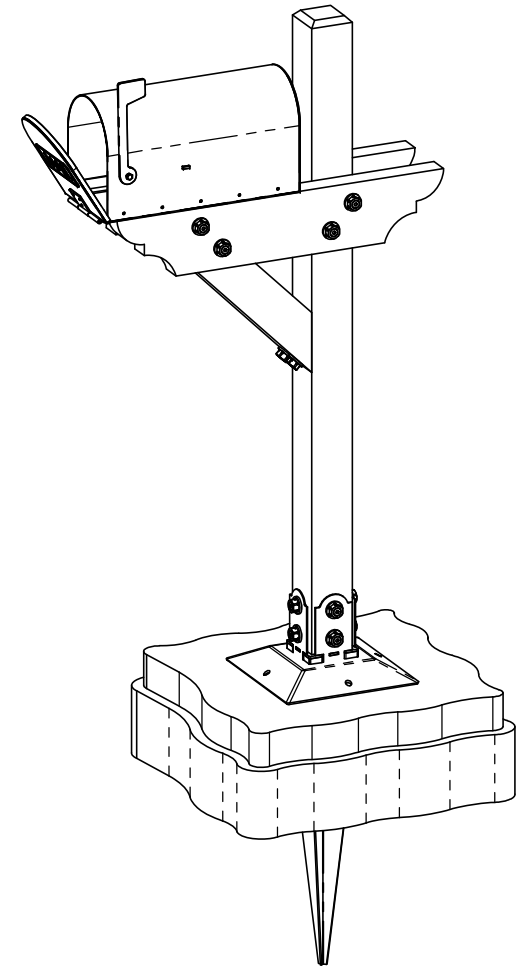
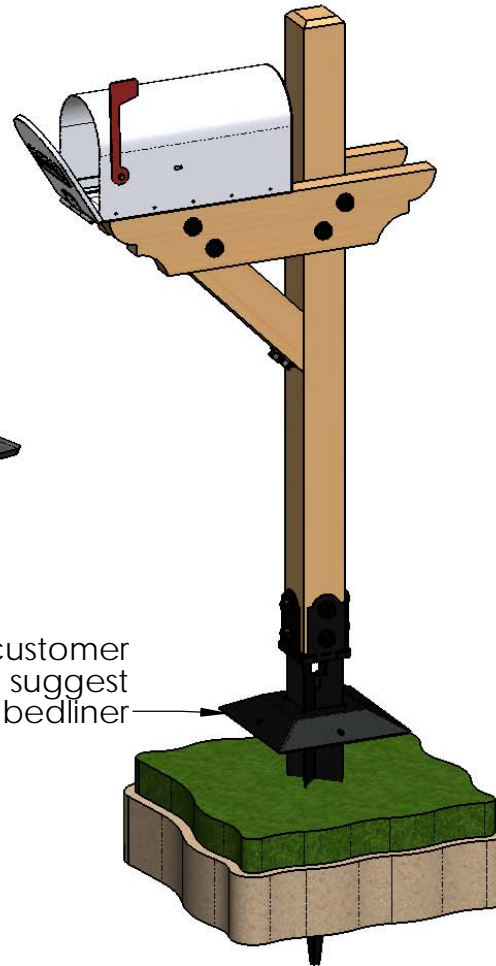
Installation Instructions, 56632-34

V2.00 - Installation Instructions, Specifications and Project Plans are effective 5/8/2017 . This information is updated periodically and should not be relied upon after 2 years from 5/8/2017 . Please visit OZCOBP.com to get current information.

optional accessory for extra stability
#50880

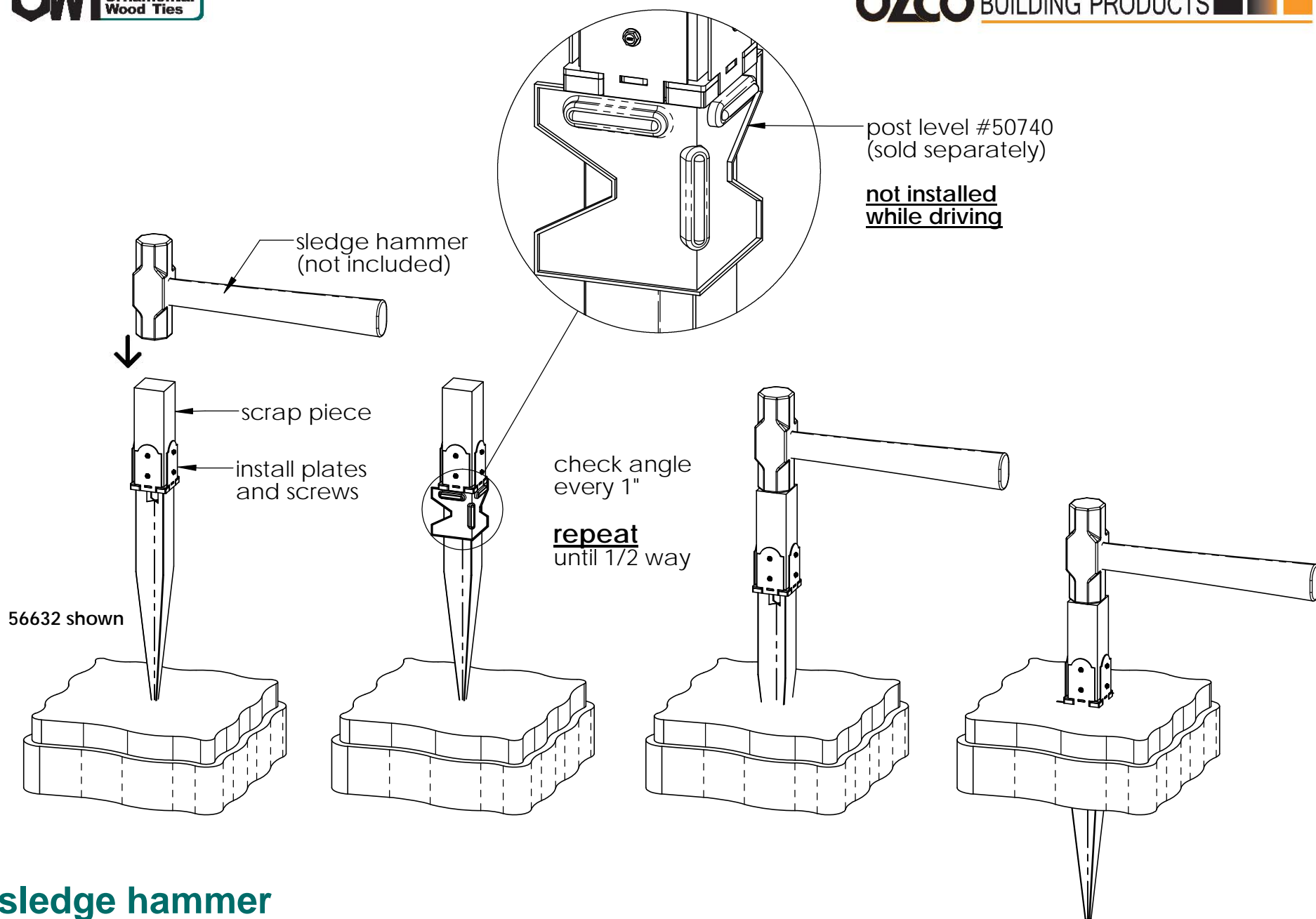


50880 shown with customer
applied black finish. suggest
spray can truck bedliner



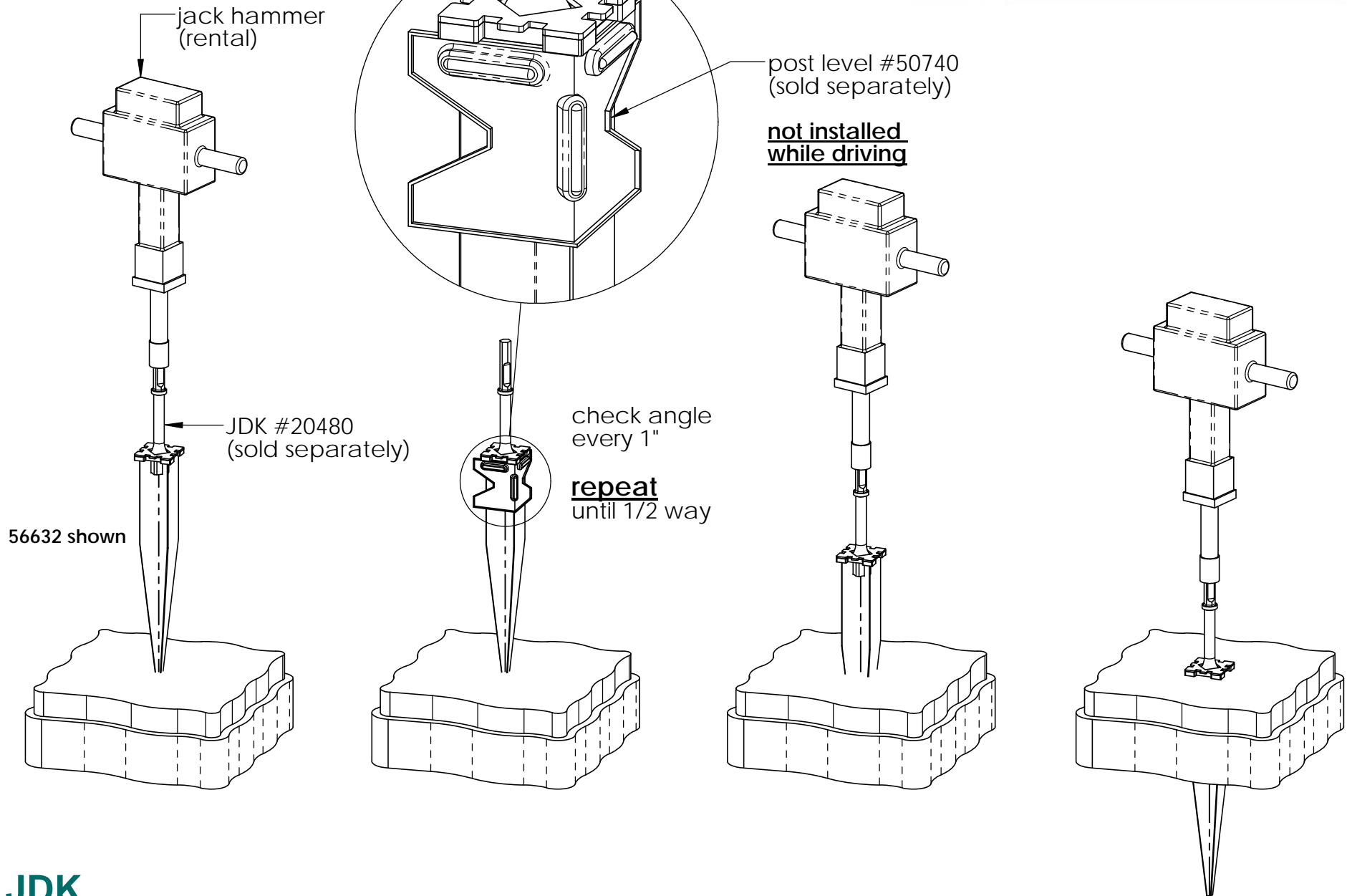
50880 accessory

Installation Instructions, 56632-34



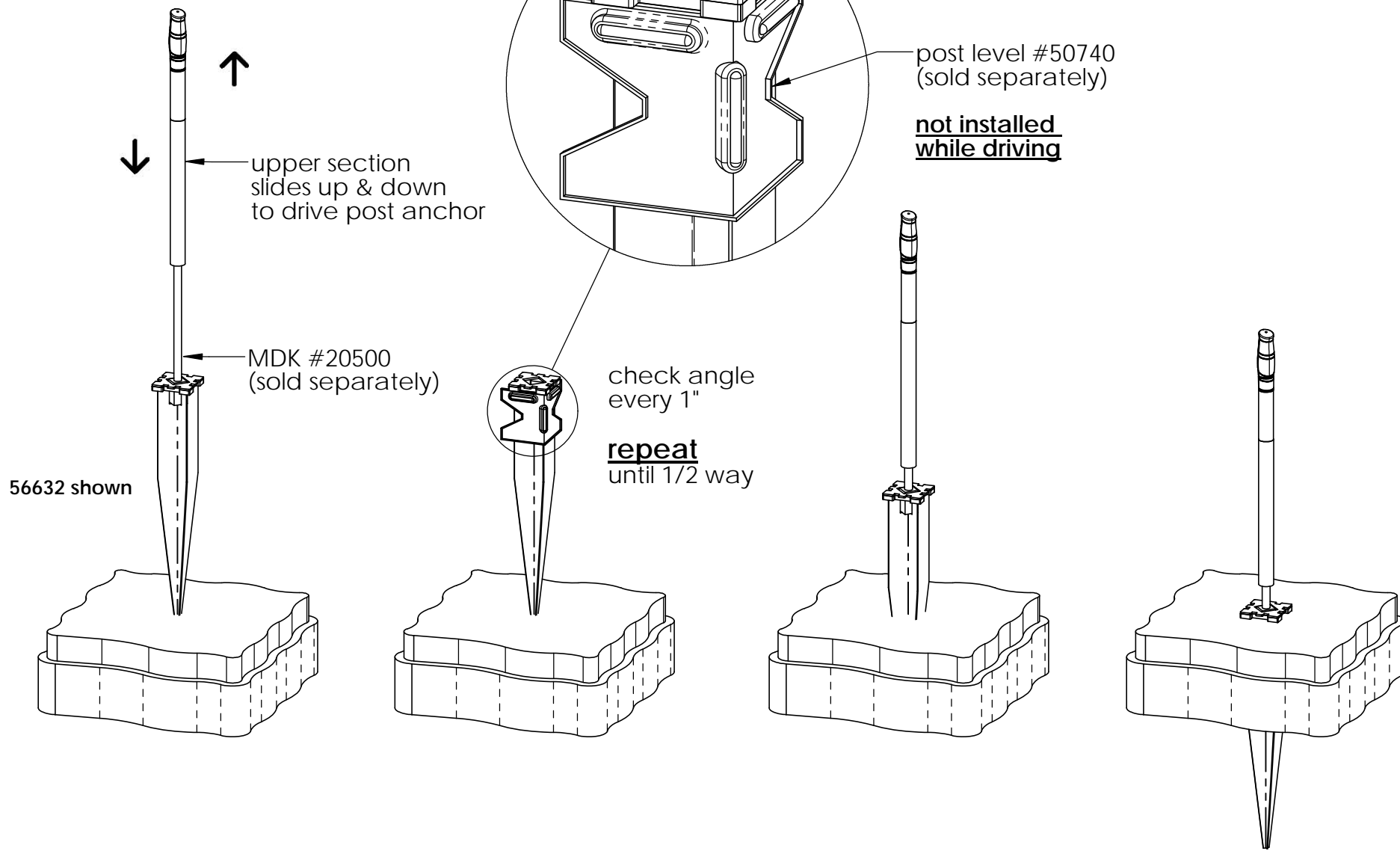
sledge hammer

Installation Instructions, 56632-34



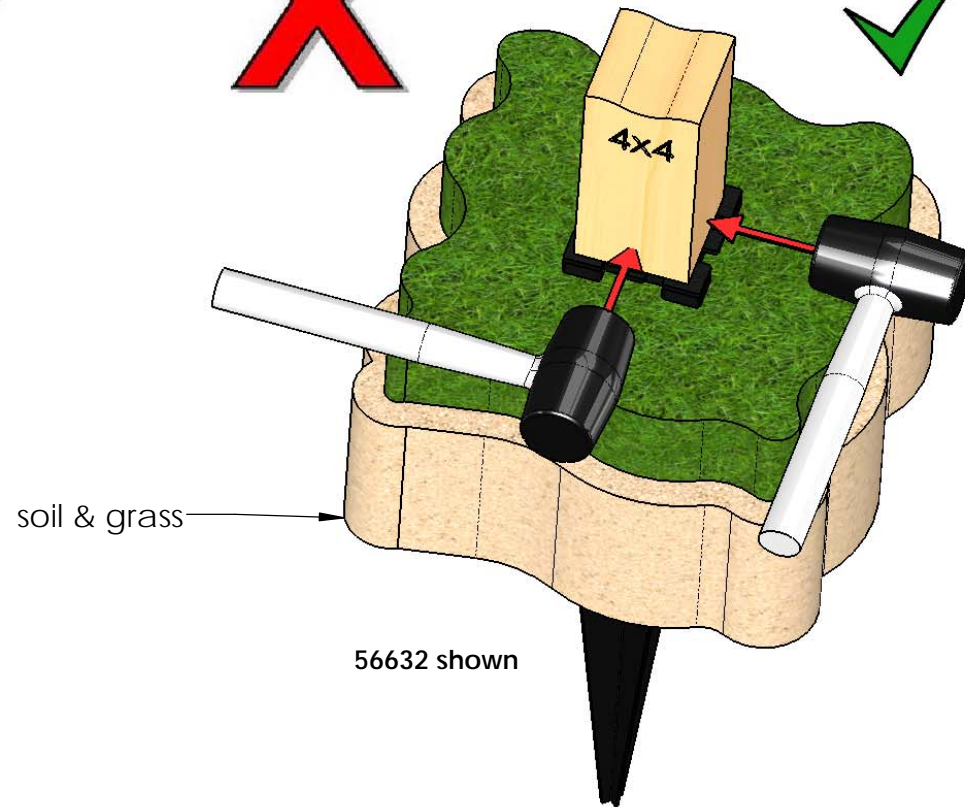
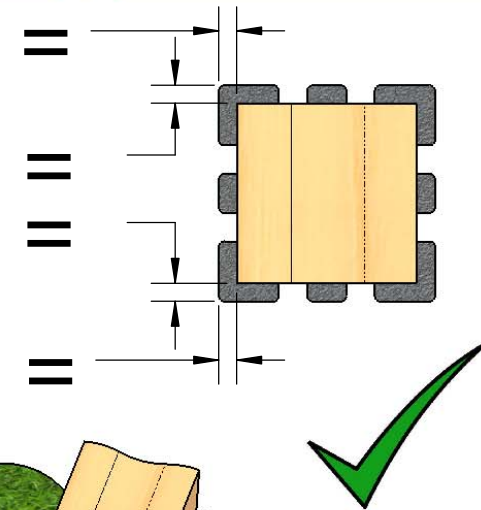
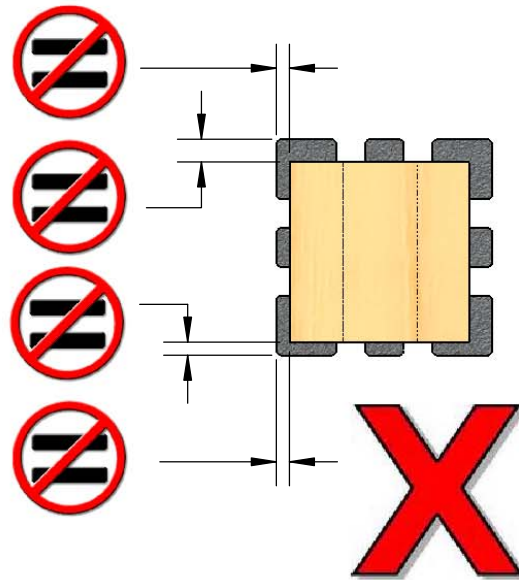
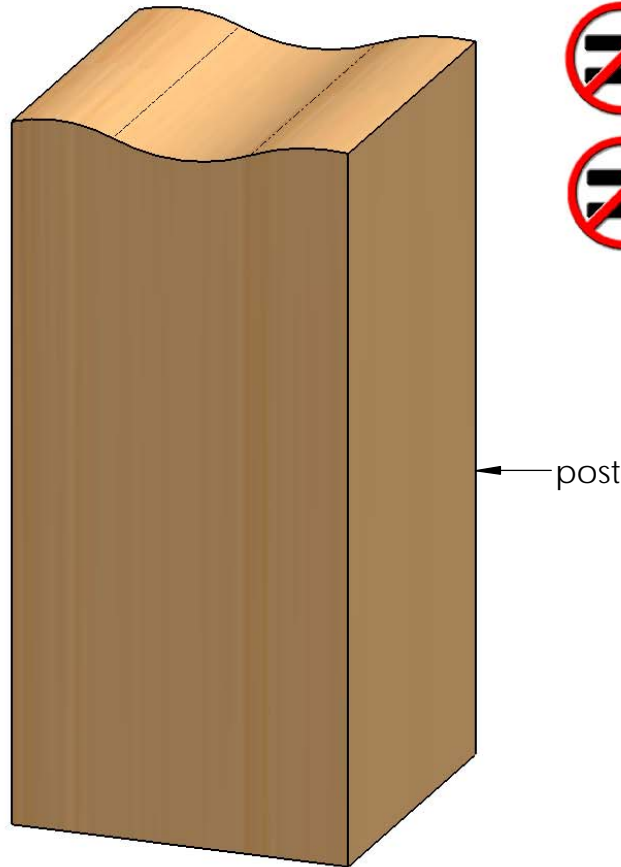
JDK

Installation Instructions, 56632-34



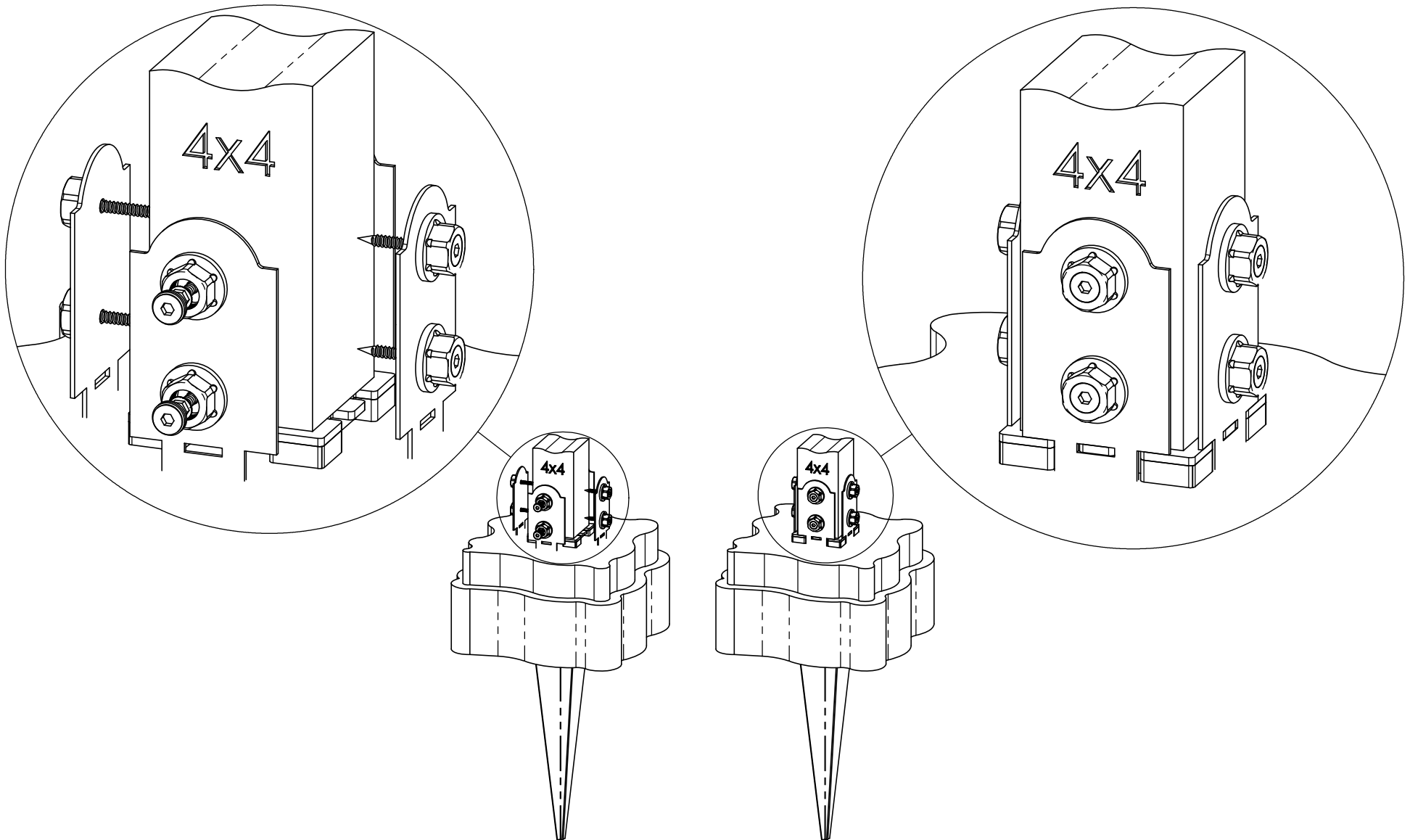
MDK

Installation Instructions, 56632-34



Post alignment

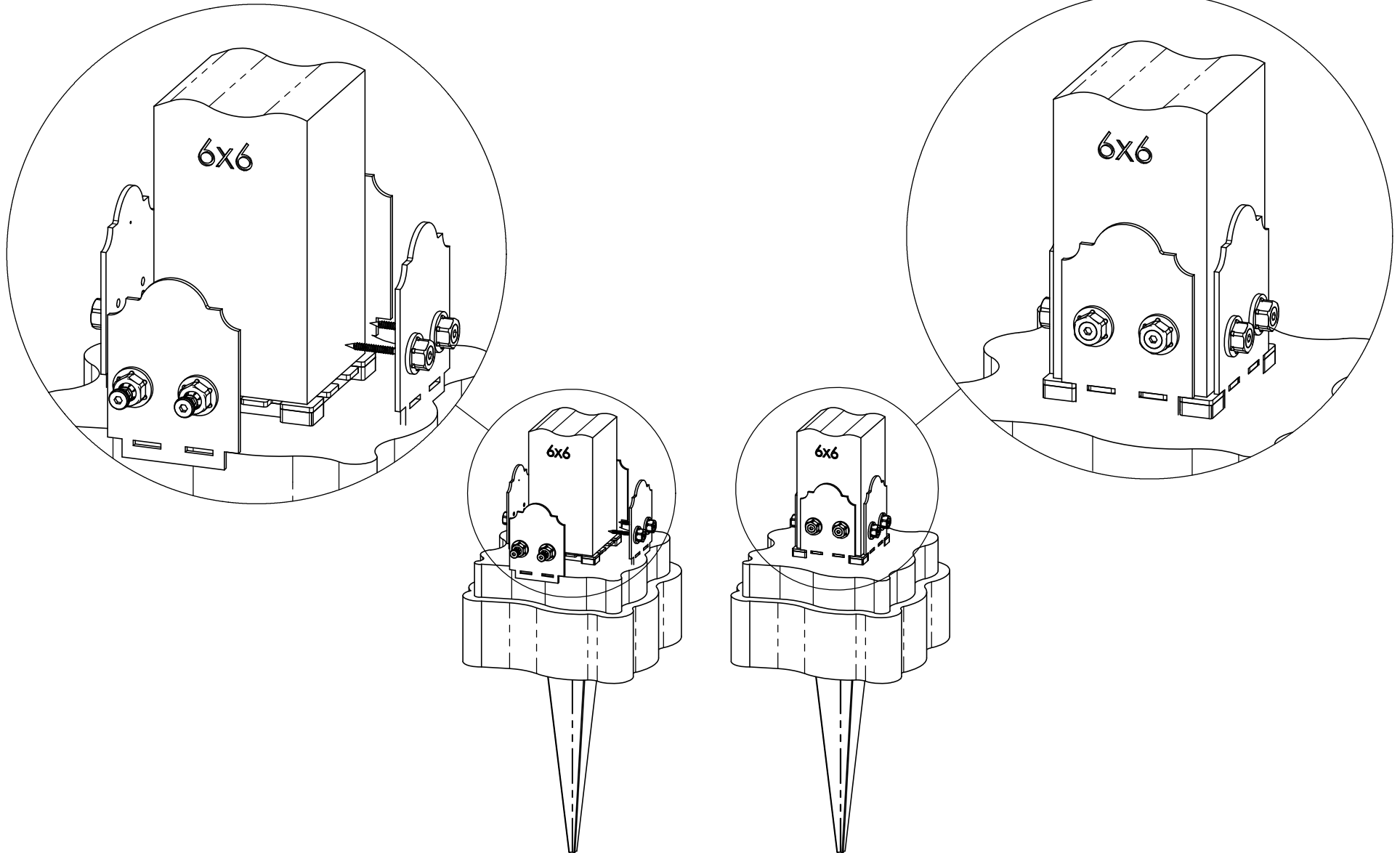
Installation Instructions, 56632-34



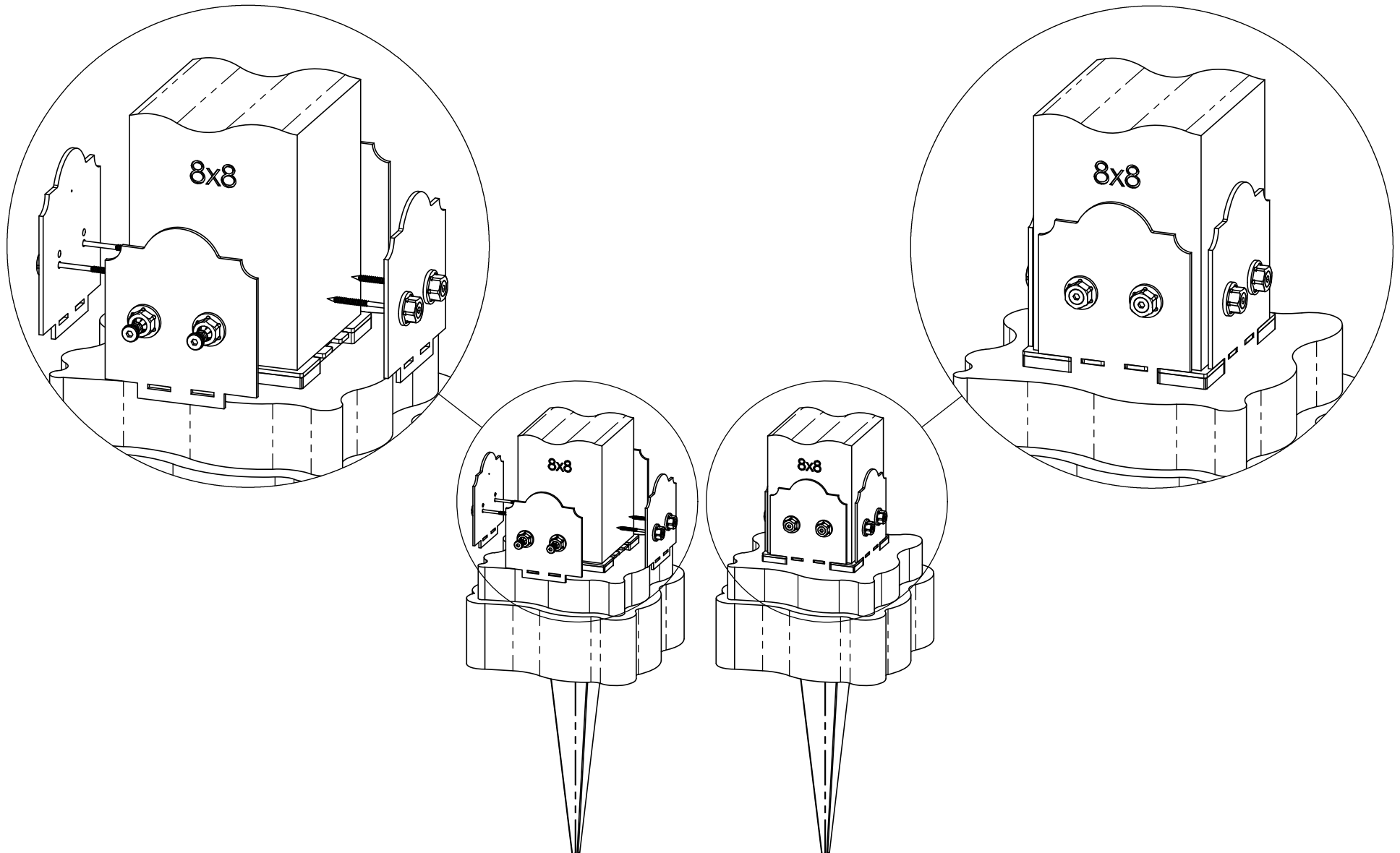
Typical Installation & Basic Assembly

Installation Instructions, 56632-34

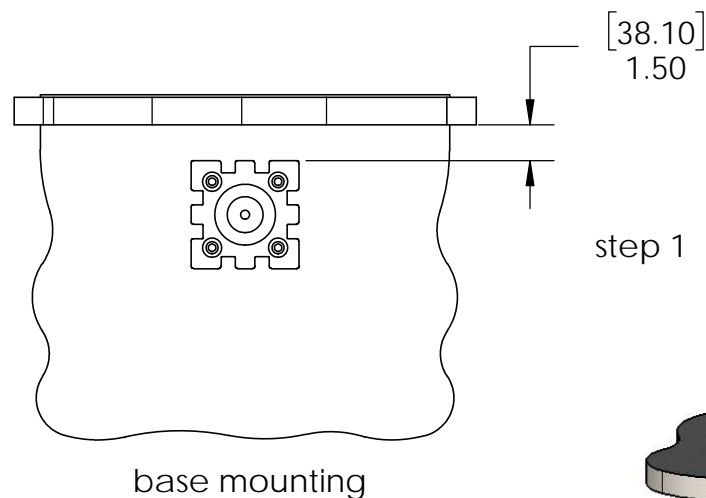
V2.00 - Installation Instructions, Specifications and Project Plans are effective 5/8/2017. This information is updated periodically and should not be relied upon after 2 years from 5/8/2017. Please visit OZCOBP.com to get current information.



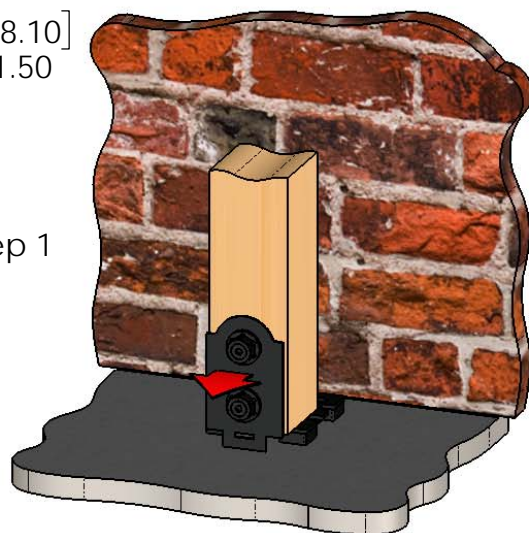
Typical Installation & Basic Assembly



Typical Installation & Basic Assembly



step 1

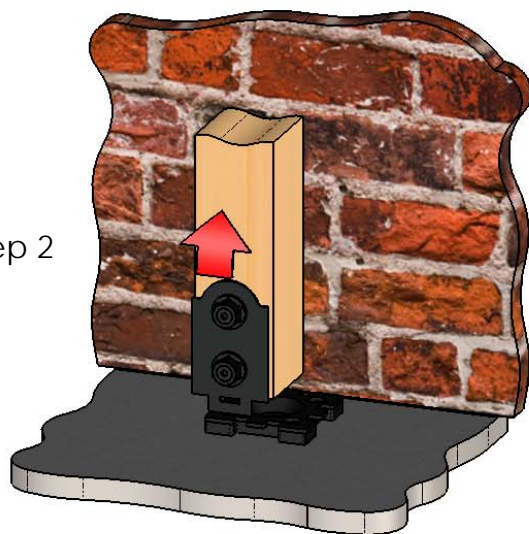


additional instructions

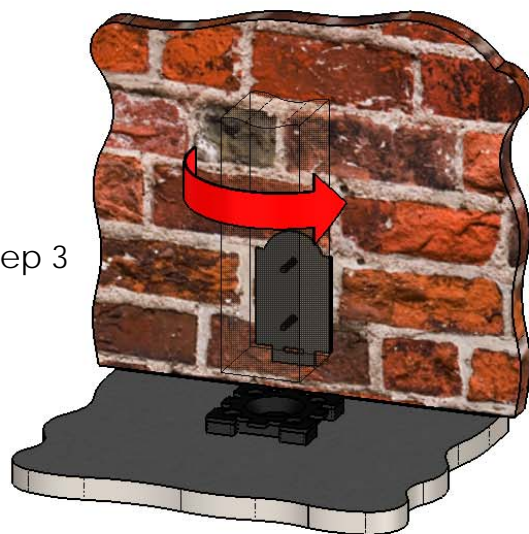
- center post as shown in previous steps
- install 1 compression plate with fasteners
- remove, reposition & reinstall post/compression plate as shown with **plate facing wall**
- complete assembly as shown

this procedure applies to all OZCO Post Bases & Post Anchors utilizing compression plates (56607 shown)

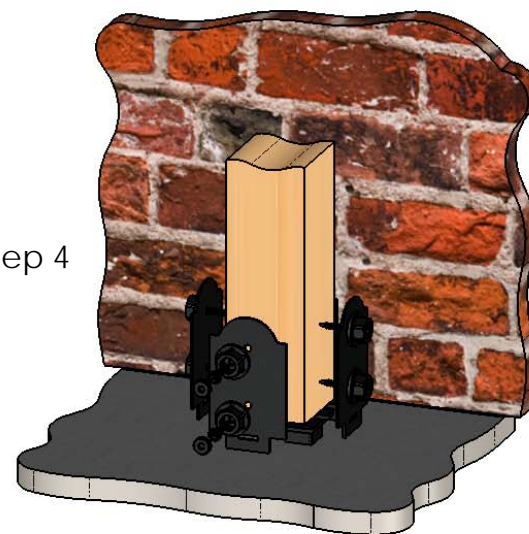
step 2



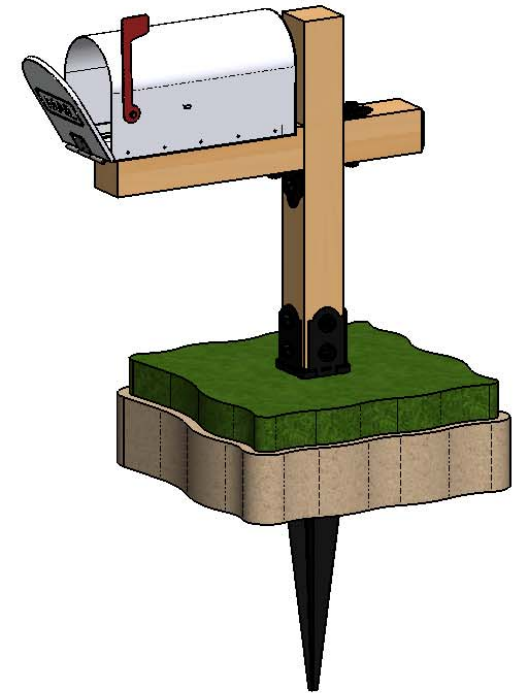
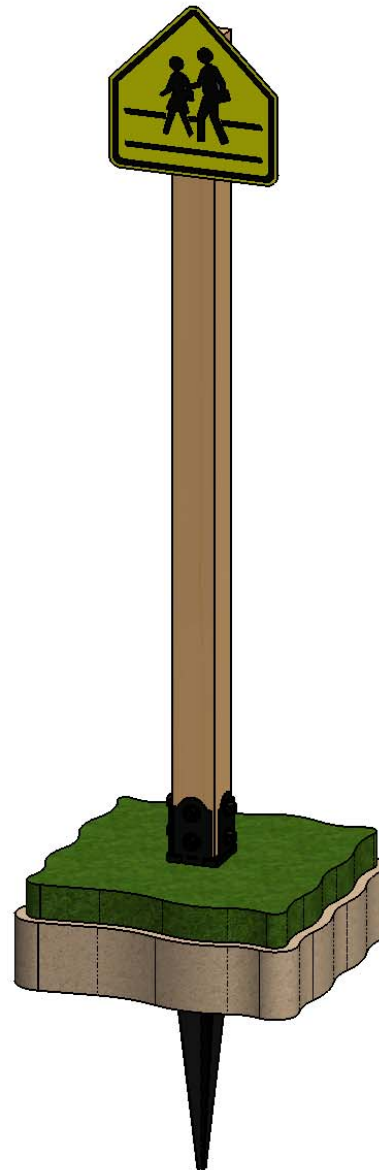
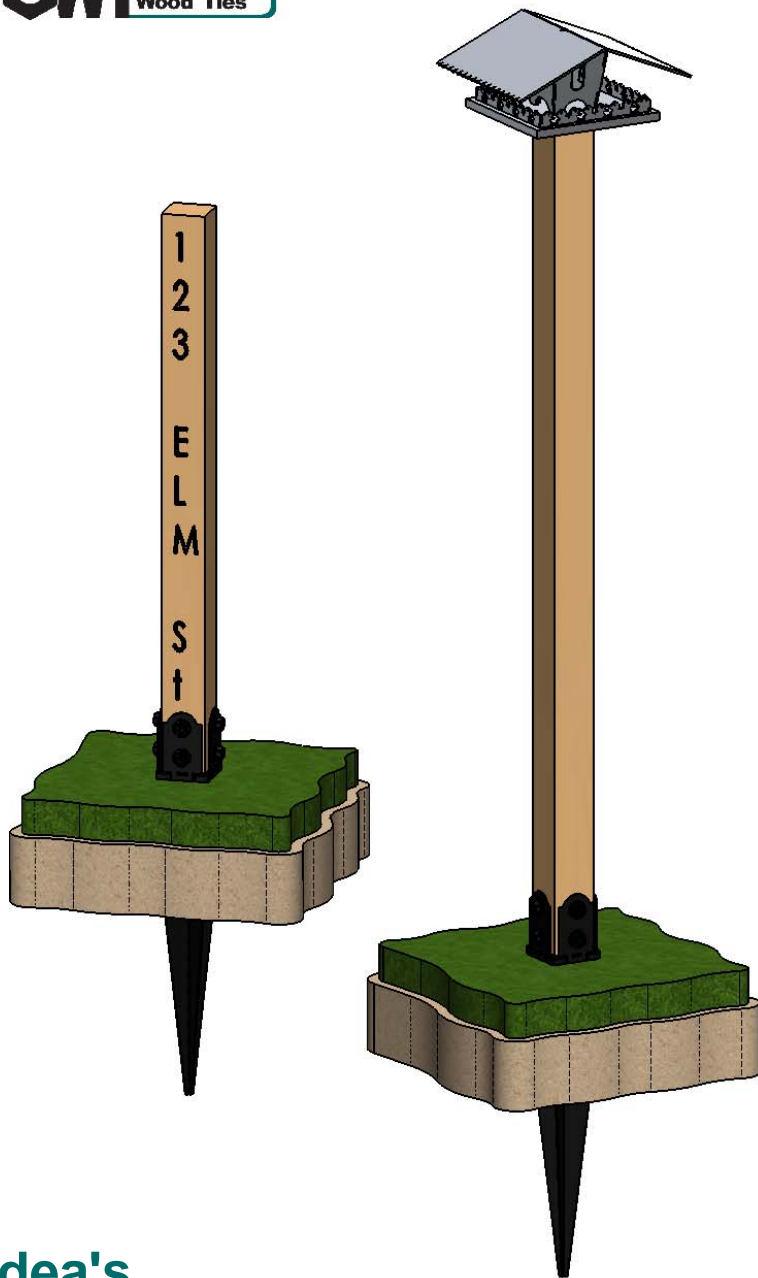
step 3



step 4



Special Instructions-mounting next to wall



Idea's

Installation Instructions, 56632-34

V2.00 - Installation Instructions, Specifications and Project Plans are effective 5/8/2017 . This information is updated periodically and should not be relied upon after 2 years from 5/8/2017 . Please visit OZCOBP.com to get current information.