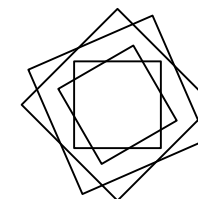
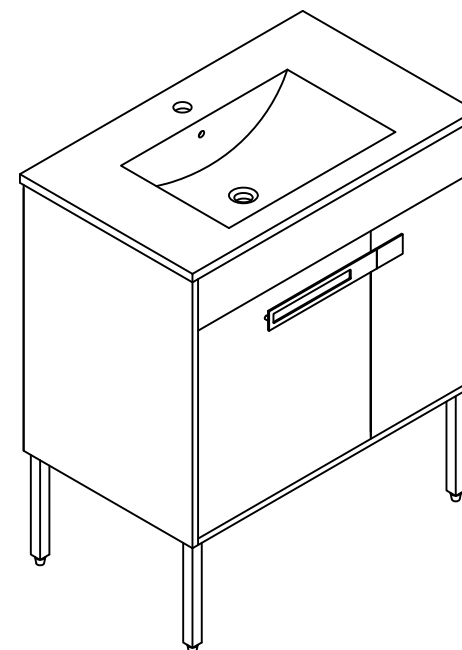


THANKS FOR WATCHING

Your feedback is invaluable to us and we would love to hear about your experience. Please take the time to leave us a review.




















Thank you for shopping with us!

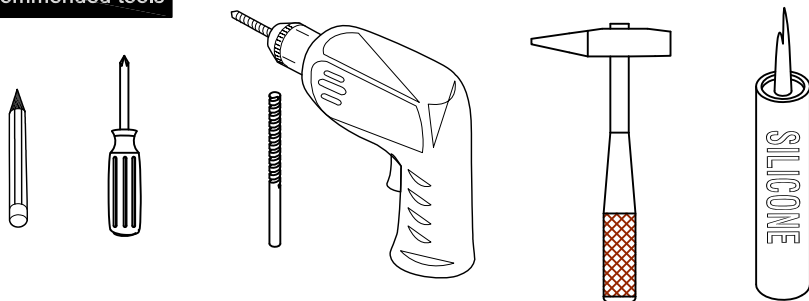
We encourage you to take a few minutes to go through this booklet. It contains important information on installation and care tips to keep your furniture looking as good as new.

Item NO.:BV B00336

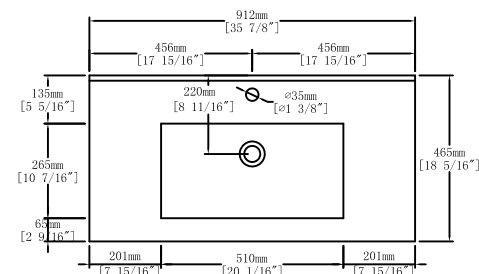
Hardware

NO.	Draw	QTY	NO.	Draw	QTY
A	 Screws Ø4x14mm	60	J	 Hinges	6
B	 Two-in-one connector	21	K	 Handle (Screws M4x18mm)	1
C	 Two-in-one connector	21	L	 Feet	4
D	 Wood plug	4	M	 Screws M4x14mm	16
E	 Plastic anchor(Ø10mm)	2	N	 Bracket (14x14x28mm)	1
F	 Screws for fix on the wall	2	O	 Anti-collision gasket	2
G	 Bracket (53x70x44mm)	2	P	 Movable laminate support	4
H	 Bracket (19x19x35mm)	2	Q	 Screwdriver	1
I	 Door stopper	2			

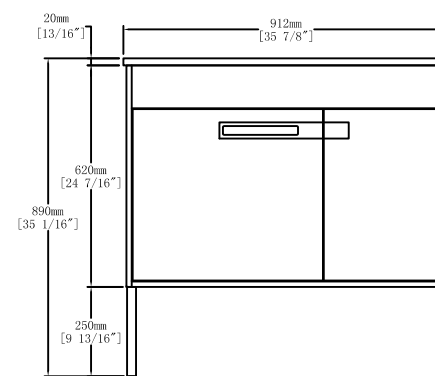
Recommended tools



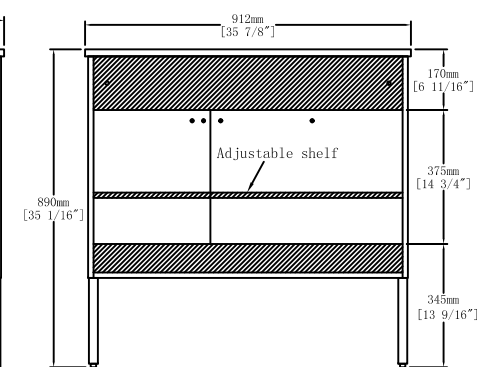
Dimensions



Top View



Front View

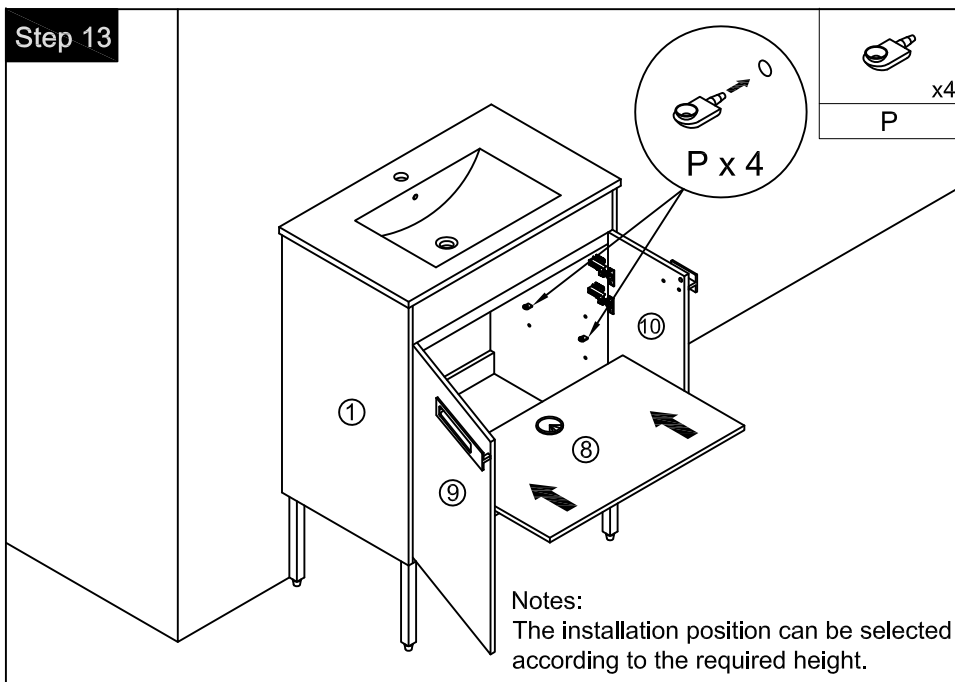


Back View

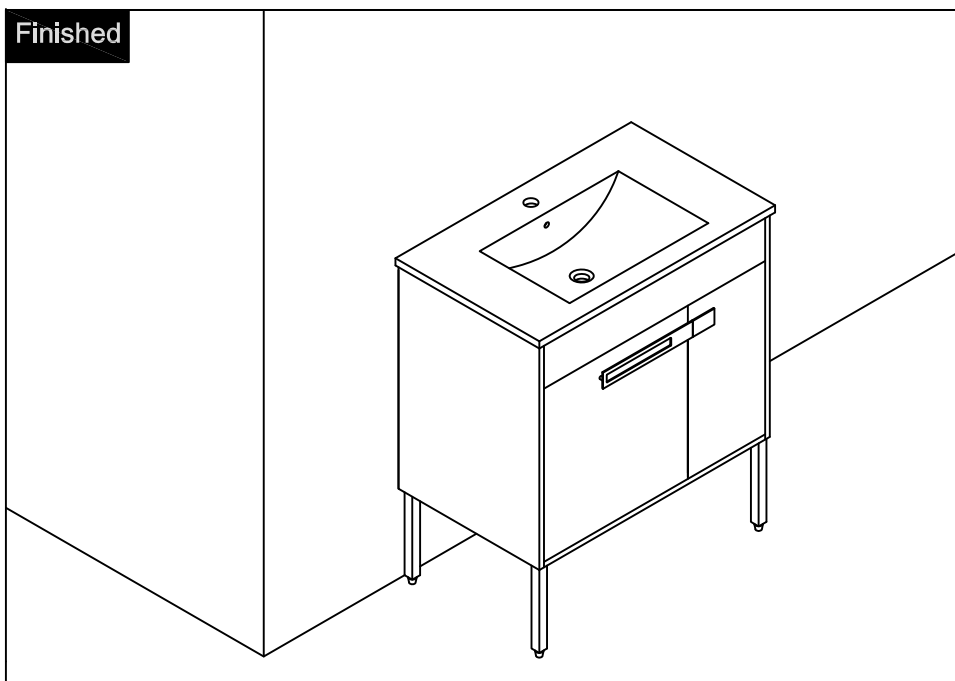
CARE CLEANING AND MAINTENANCE

- 1.Dust regularly with a soft , dry cloth.
- 2.Avoid the use of all chemicals household cleaners, abrasives, or cleaners that contain lemon, vinegar, or other acids that may damage the finish.
- 3.Excessive exposure to sunlight and extreme changes in temperature and moisture can damage wood furniture.
- 4.The sink top is resilient, but care needs to be taken to preserve its appearance.
- 5.Do not place hot appliances, such as curling irons and hot hair dryers directly on the countertop. Wipe spills immediately.

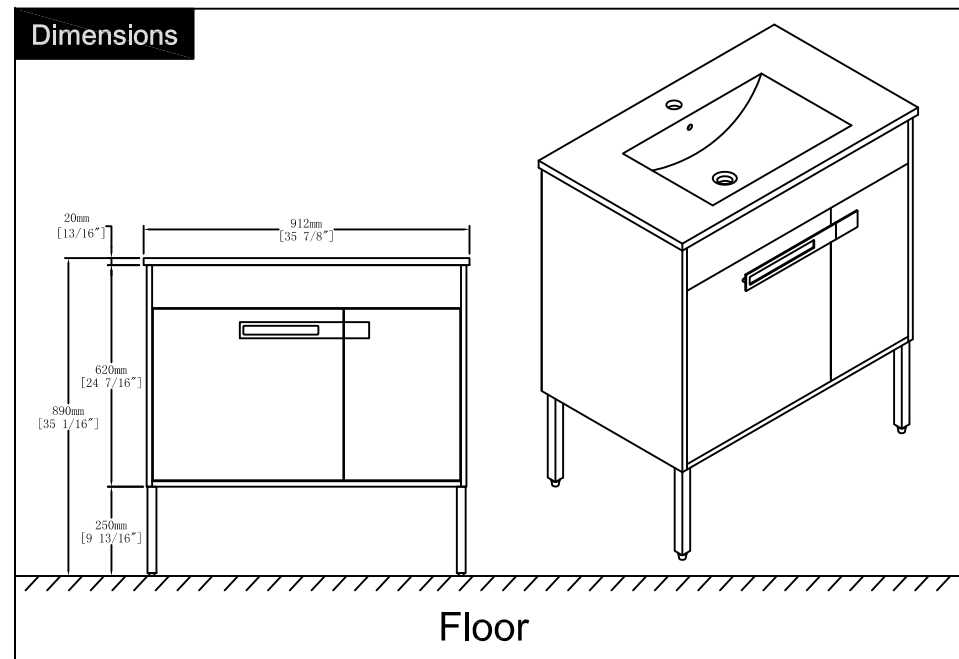
Step 13



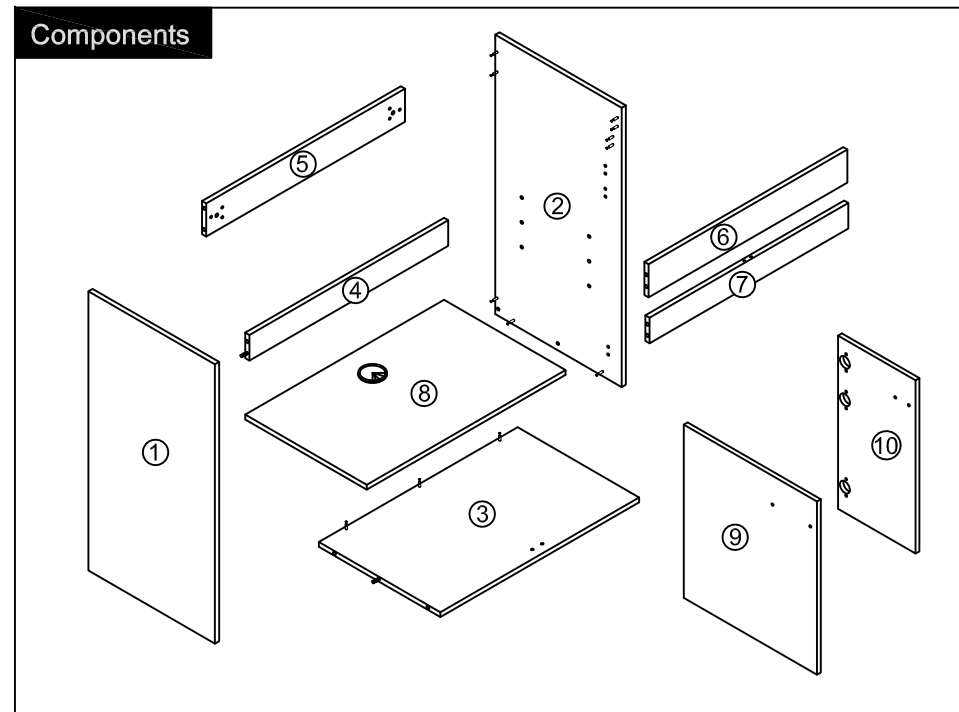
Finished



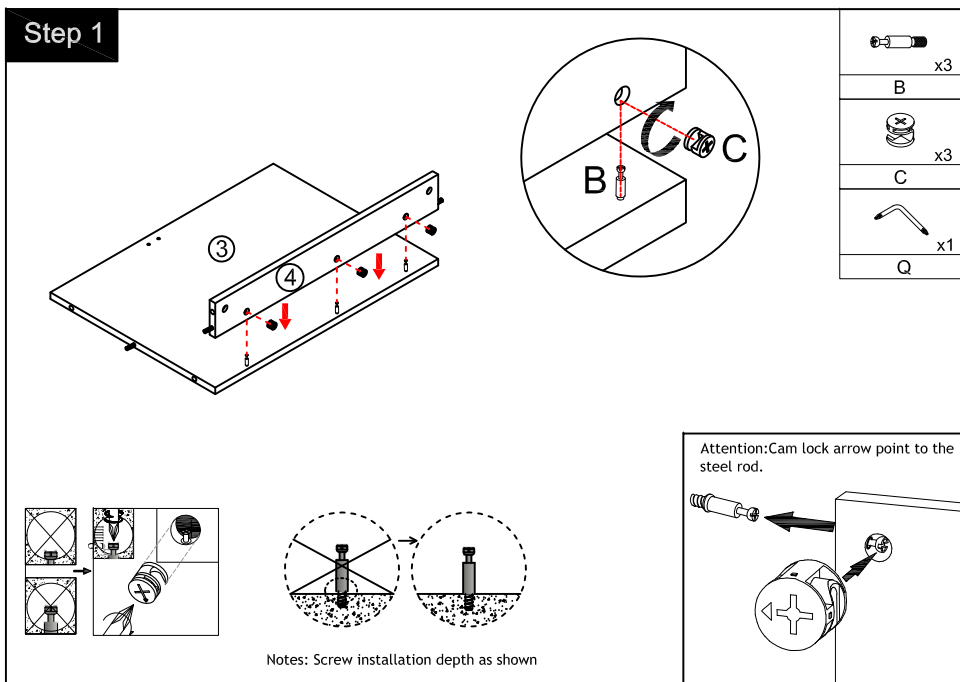
Dimensions



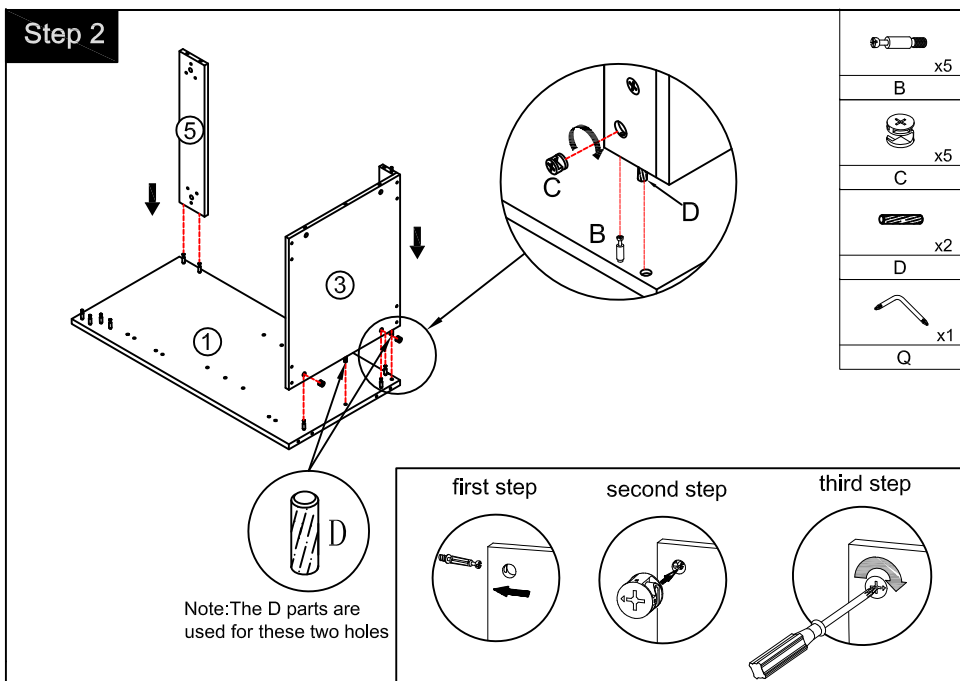
Components



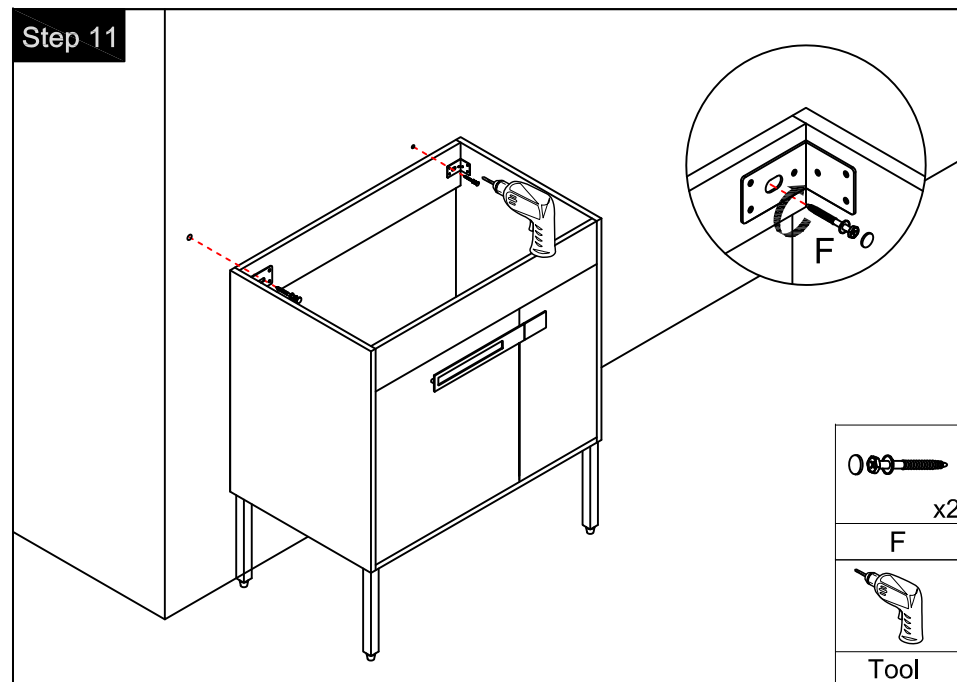
Step 1



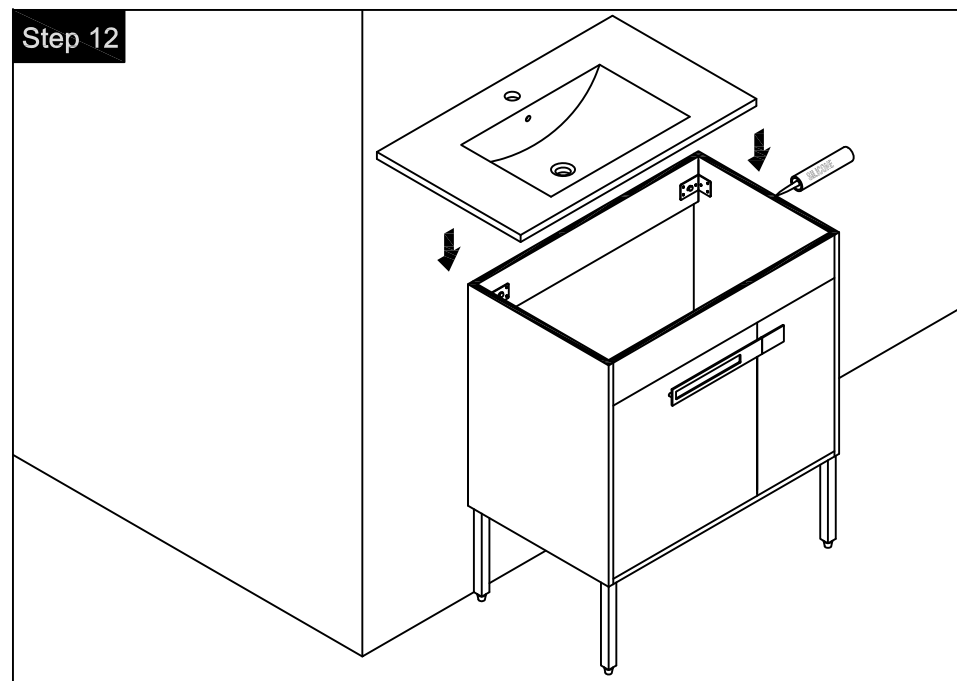
Step 2



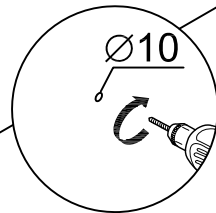
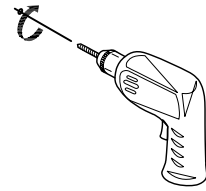
Step 11



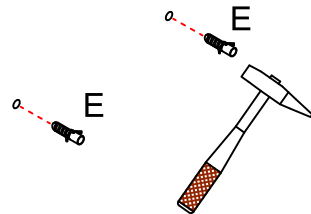
Step 12



Step 9

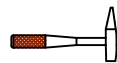


Step 10



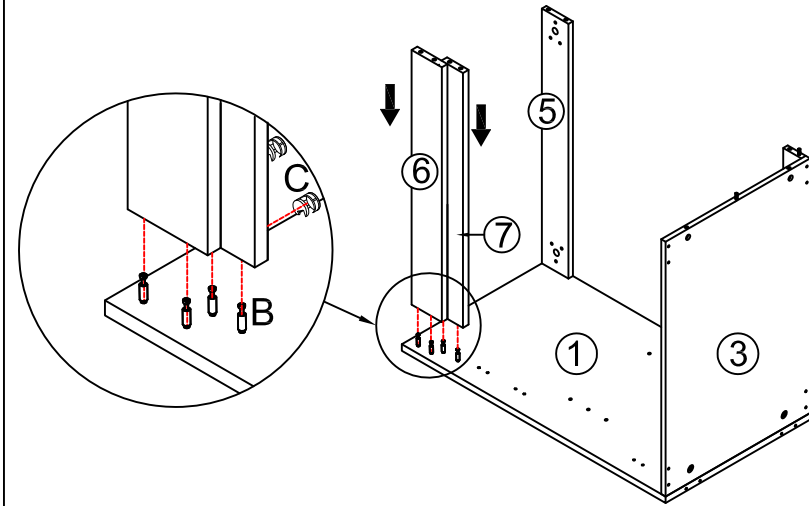
x2

E



Tool

Step 3



x4

B



x4 |

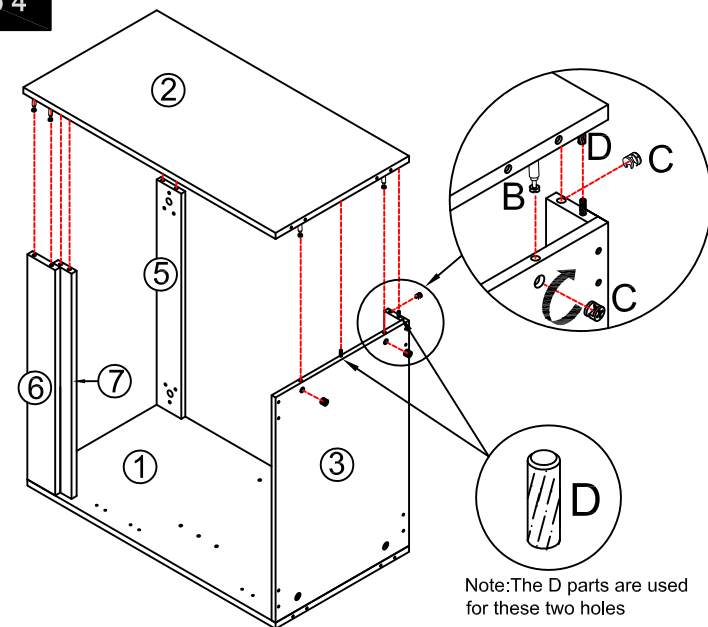
C



x1 |

Q

Step 4



x9	
----	--

B

x9

C

x2

D

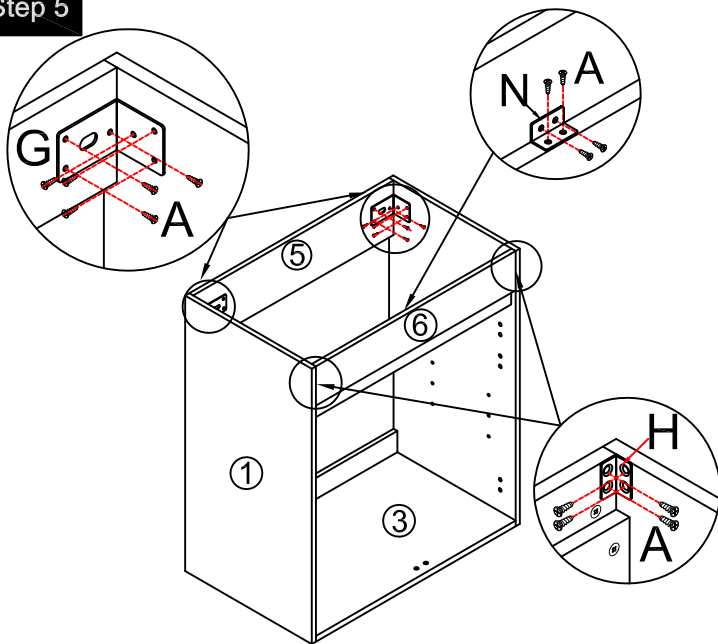


x1

Q

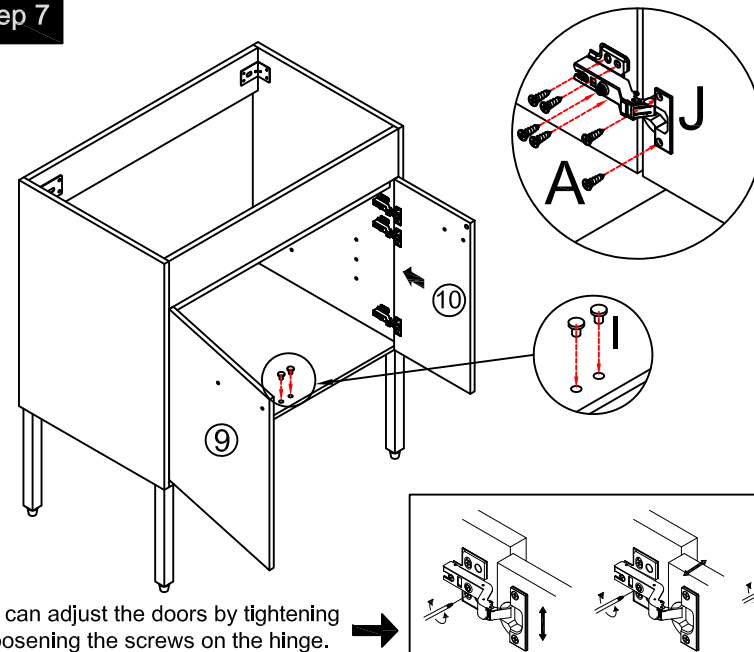
Note: The D parts are used for these two holes

Step 5



	x2
	x2
	x1
($\varnothing 4 \times 14\text{mm}$)	
	x24
Tool	

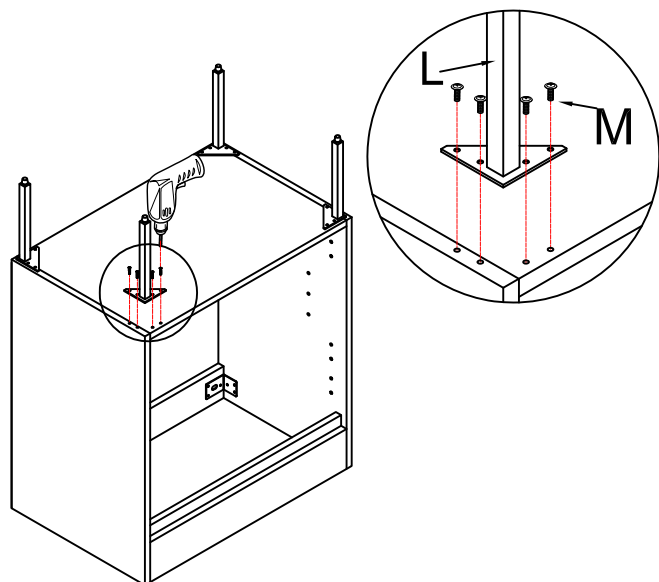
Step 7



You can adjust the doors by tightening or loosening the screws on the hinge. →

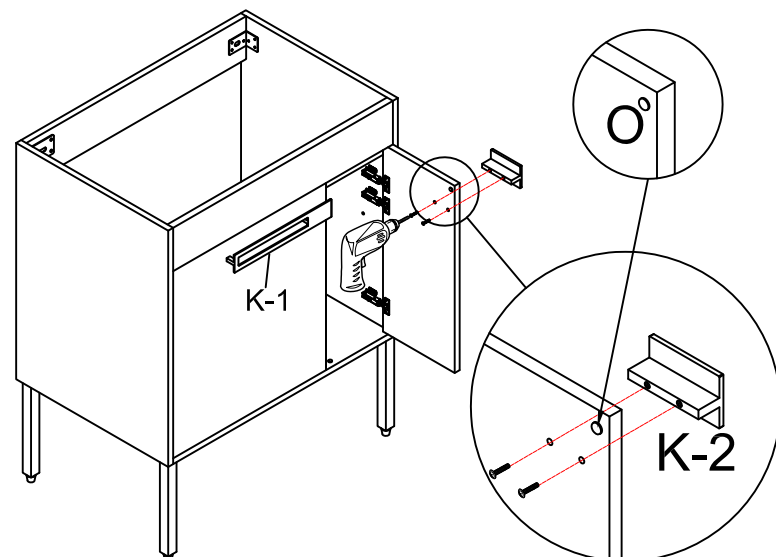
	x6
($\varnothing 4 \times 14\text{mm}$)	
	x36
	x2
Tool	

Step 6



	x4
($M4 \times 14\text{mm}$)	
	x16
Tool	

Step 8



	x2
	x1
	x2
Tool	