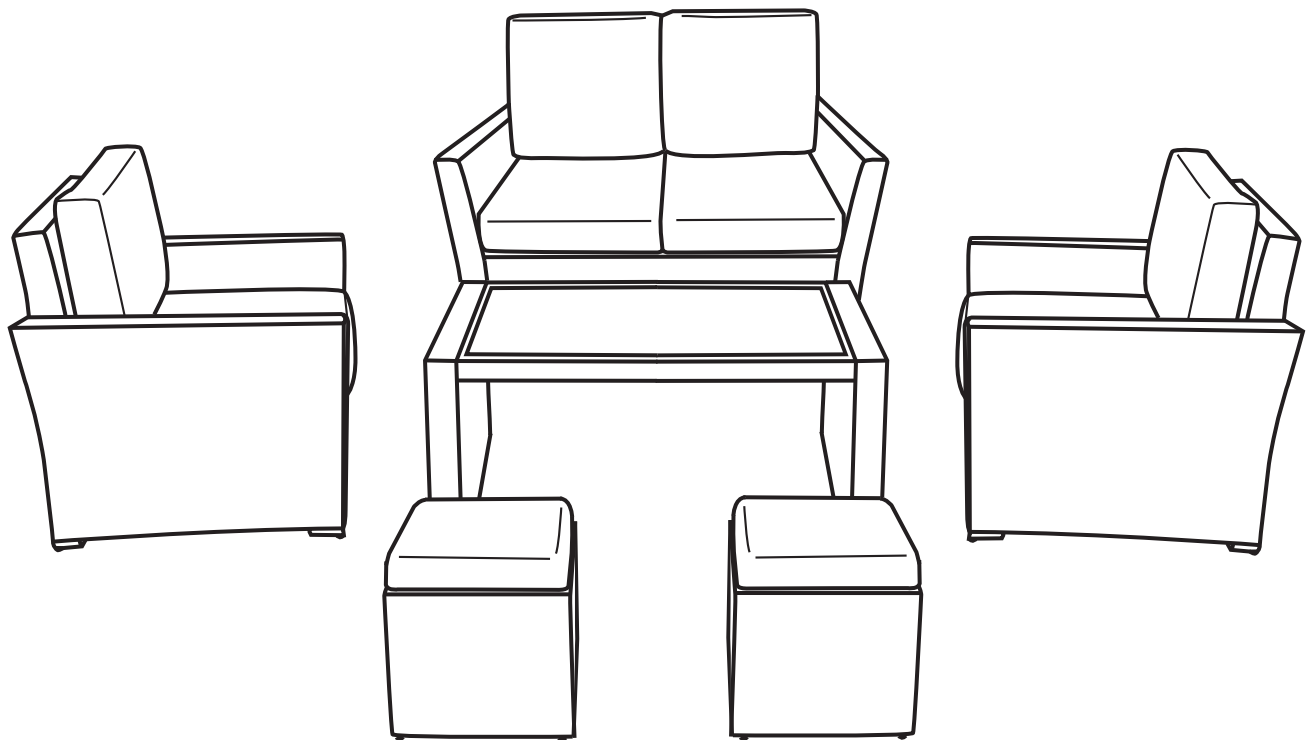




Item # 844019

# NEWTON 6PC SEATING ASSEMBLY INSTRUCTIONS



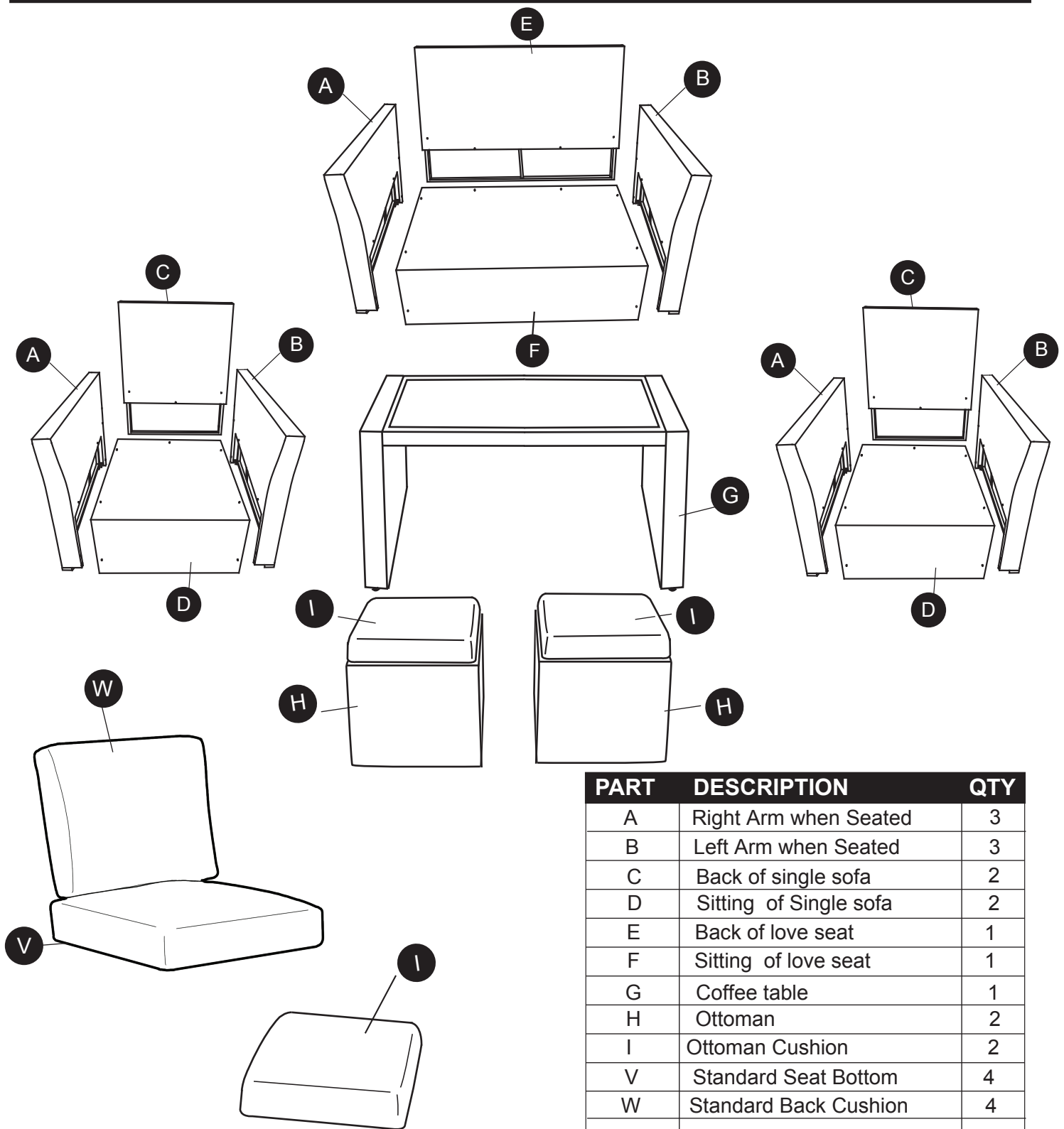
## ATTACH YOUR RECEIPT HERE

Order Number \_\_\_\_\_ Purchase Date \_\_\_\_\_



**Questions, problems, missing parts?** Before returning to your retailer, email our customer service department directly at [HELLO@LEISUREMADE.COM](mailto:HELLO@LEISUREMADE.COM) or call us at (888) 682-3012 8am-4pm EST, Monday-Friday.

# PACKAGE CONTENTS



PART	DESCRIPTION	QTY
A	Right Arm when Seated	3
B	Left Arm when Seated	3
C	Back of single sofa	2
D	Sitting of Single sofa	2
E	Back of love seat	1
F	Sitting of love seat	1
G	Coffee table	1
H	Ottoman	2
I	Ottoman Cushion	2
V	Standard Seat Bottom	4
W	Standard Back Cushion	4

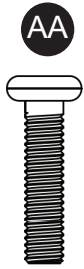
Note: You will also have 6 plastic bags containing your fabric covers.

5 Bags: Standard Seat Covers (1 bag contains both 1 bottom seat and 1 back cover)

1 Bag: Corner Seat Covers (1 bag contains 3 covers: 1 bottom and 2 back covers)

## HARDWARE CONTENTS

---



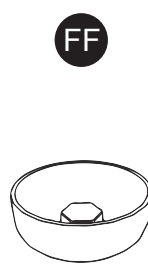
M6 Bolt x 35mm  
Qty: 30



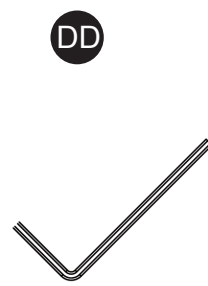
M6 Bolt x 40mm  
Qty: 3



Washer  
Qty: 33



Plastic Bolt Cap  
Qty: 33




Allen Key  
Qty: 2

## SAFETY INFORMATION

---

Please read and understand this entire manual before attempting to assemble, operate or install the product.

 **CAUTION:** Assemble on a soft, non-abrasive surface.

## PREPARATION

---

Before beginning assembly of product, make sure all parts are present. Compare parts with the package contents list and hardware contents list. If any part is missing or damaged, do not attempt to assemble the product.

If you find a missing or damaged part, please look through all pieces to make sure nothing else is missing or damaged. Compile a comprehensive list and give us a call. We will send out all parts in a single shipment. Ensuring you have all missing parts identified at the time you call will ensure a faster delivery to complete your beautiful patio furniture.

**Please call us directly, not your retailer. As the manufacturer we can walk you through any issues you may have. We are here to help: (888) 682-3012**

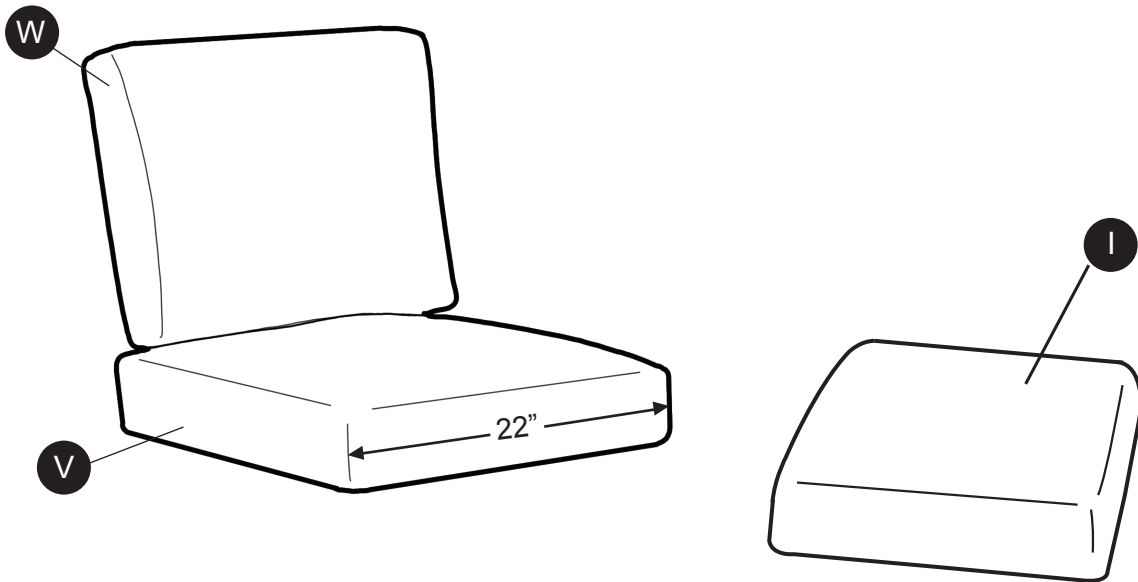
## CUSHION ASSEMBLY

Before beginning, make sure all cushions and covers are present. The differences between the standard cushions and the corner cushion is very subtle, so make sure you have identified the difference in size before pulling on the fabric covers.

**NOTE:** Do not remove covers from plastic bags until you have paired them with the matching (V, W, X, Y, Z) cushion. Match the letters on the cushion with the same letters on the fabric bags.

PART	DESCRIPTION	QTY
V	Standard Seat Bottom	4
W	Standard Back Cushion	4
I	Ottoman Cushion	2

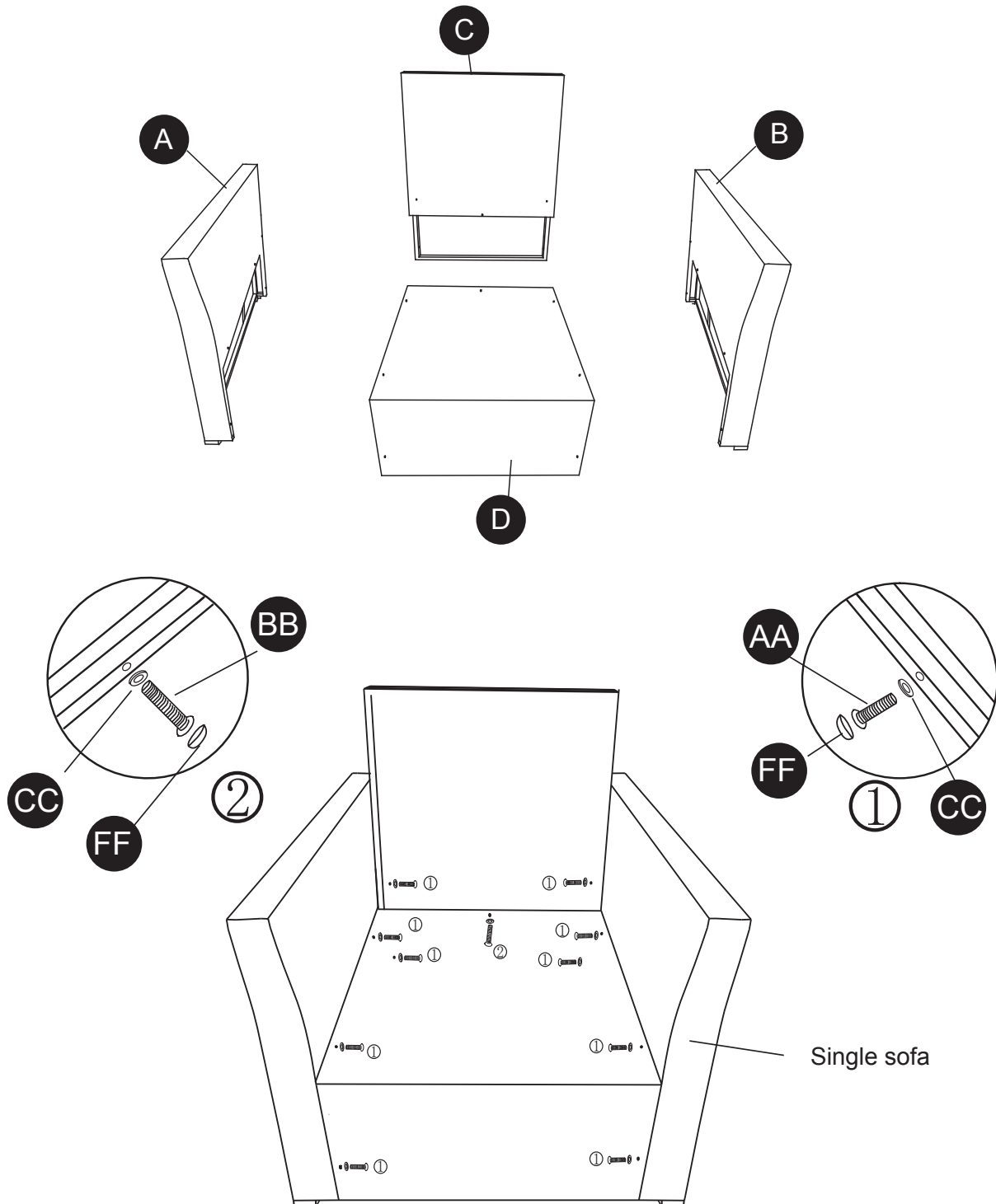
STANDARD CUSHION



**HELPFUL TIP:** we call this the 'Taco Method'. Place the cushion between your knees and squeeze together to form a taco. This makes it much easier to pull on the cushion cover.

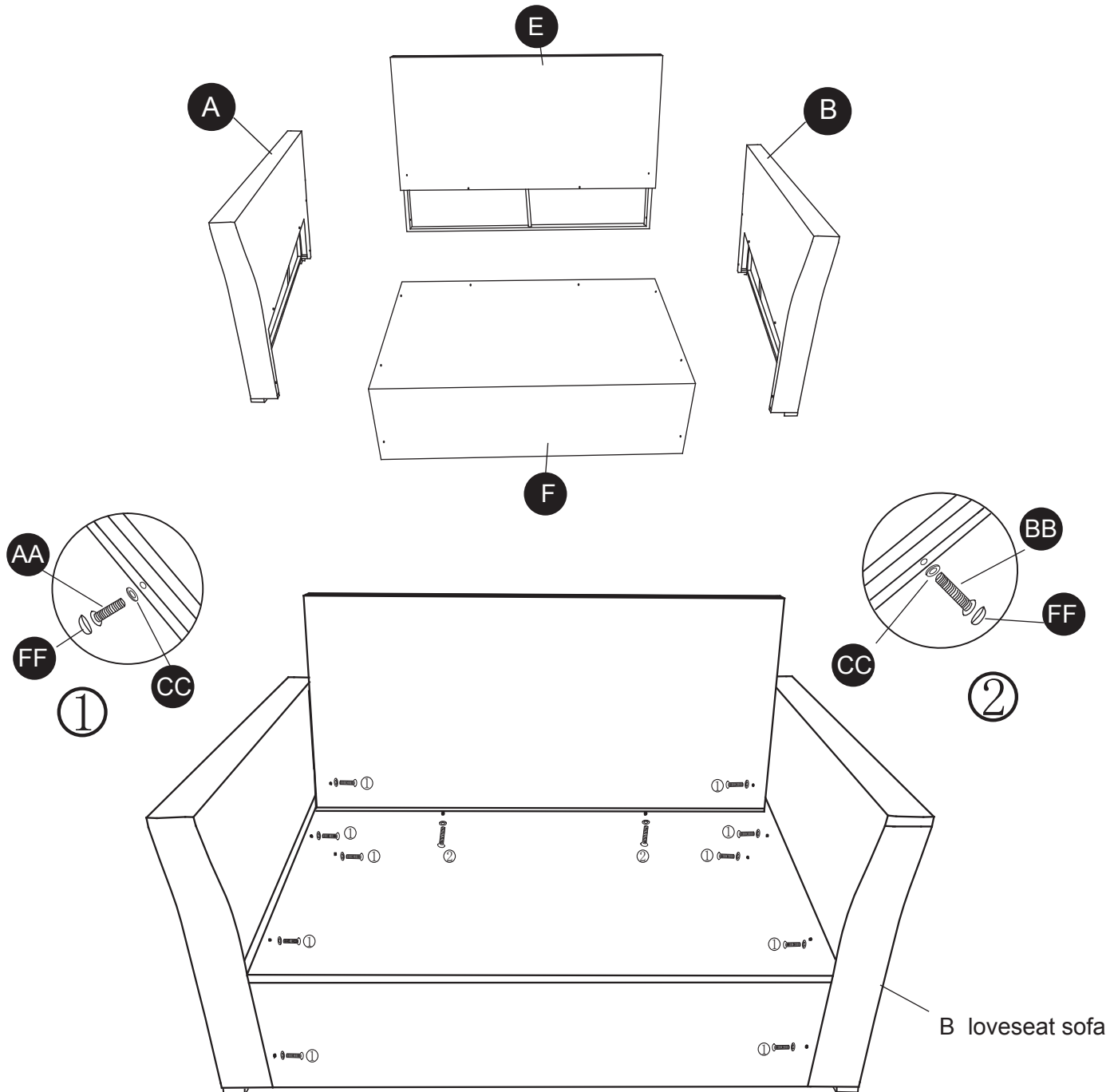
## ASSEMBLY INSTRUCTIONS

1. Single sofa assembly, first the left armrest (B) with 1 screws AA (M6 \* 35) and plate (D) before the stand pipe connections, use two screws AA(M6 \* 35) and plate (D) the tube connection, and then use 2 screws AA(M6 \* 35) connected to the sofa back (C) standpipe, right arm as well as left armrest method with the plate (D) and the back of a sofa (C) connection, after the last plate transverse work 1 screws BB(M6 \* 40) connected to the back. Cover the screw cap (FF) after all screws are installed. The assembly diagram is as follows:



## ASSEMBLY INSTRUCTIONS

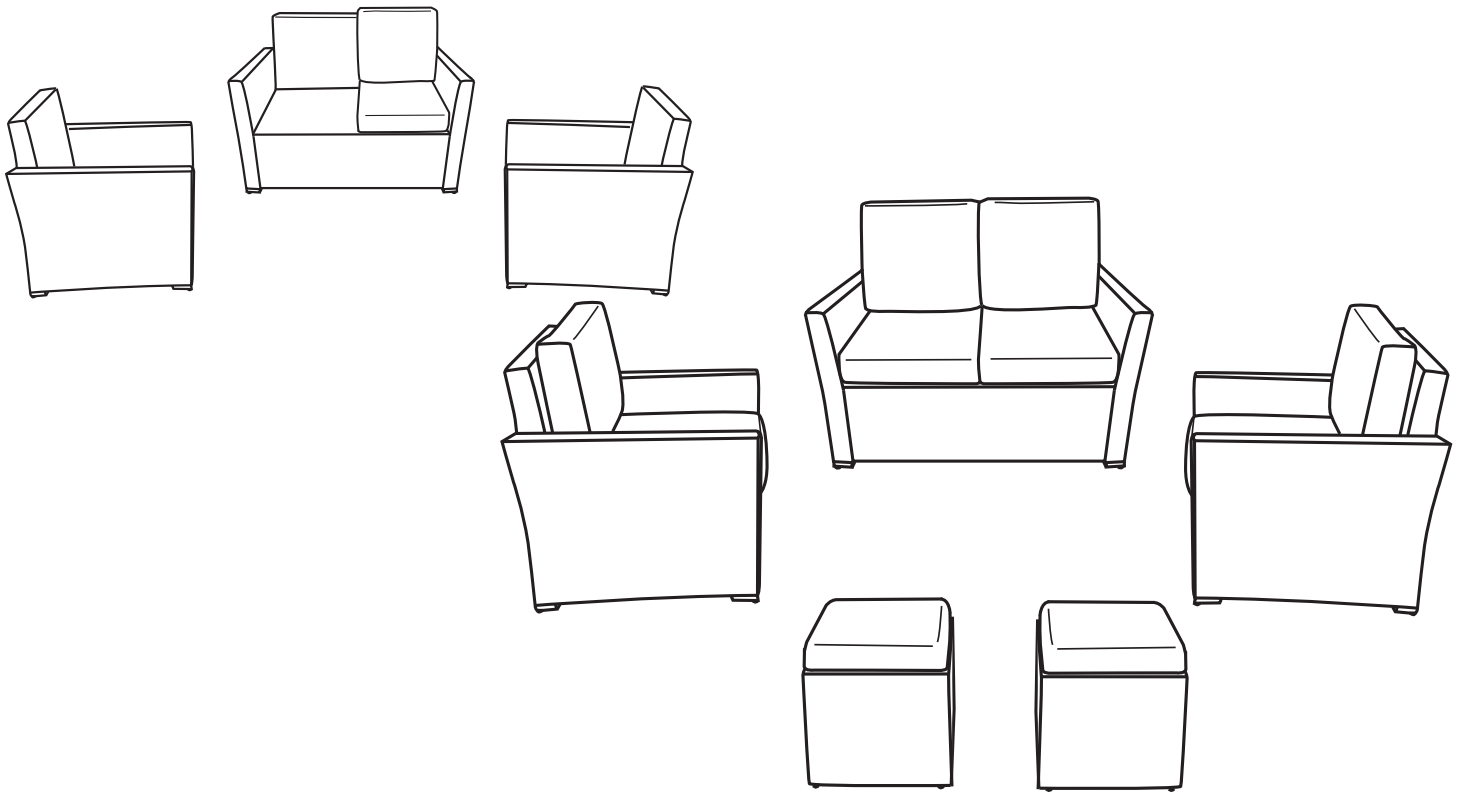
2. Love seat assembly, first the left armrest (B) with 1 screws AA (M6 \* 35) and plate (F) before the stand pipe connections, use 2 screws AA(M6 \* 35) and plate (F) the tube connection, and then use 2 screws AA(M6 \* 35) connected to the sofa back (E) standpipe, right arm as well as left armrest method with the plate (F) and the back of a sofa (E) connection, after the last plate transverse work 2 screws BB(M6 \* 40) connected to the back. Cover the screw cap (FF) after all screws are installed. The assembly diagram is as follows:



## ASSEMBLY INSTRUCTIONS

---

- 3.** With all the furniture secured with the adjustable feet, now add your finished corner cushions (these are the cushions that are slightly different in size than the standard seat cushion). Then add all additional cushions.



- 4.** Place coffee table with finished seating and enjoy your beautiful furniture!  
If you have any issues please call (888) 682-3012 directly.

