



Instruction Manual

Item# HC-7300-GR



Having Trouble?

Chat with us on your phone

Simply point your phone camera towards the QR code or see our website



xbrand.us

or email at

customerservice@ecintel.com

Monday - Friday 7:00AM - 3:30PM PST

Lion Wall Fountain



Purchased your product online?

We would really appreciate it if you can share your experience with others by reviewing our product on the website from which you purchased.



Have Questions or Issues? Need help with assembly?

Contact us and we will resolve immediately.

Simply point your phone camera towards the QR code or see our website

Support Hours M-F 7:00AM - 3:30PM (U.S Pacific Time)



Chat with us:
xbrand.us



Email:
customerservice@ecintel.com



Call:
951-319-4433

Purchased your product online?

We would really appreciate it if you can share your experience with others by reviewing our product on the website from which you purchased.



Limited 1-Year Manufacturer Warranty on xbrand.us

Manufacturer warranty covers:

- Parts that are deemed defective within 30 days will be shipped free of charge, within the 48 contiguous states.
- Any warranty claim after 30 days, will require shipping to be paid by the customer.

Any visible damage due to the neglect, misuse, or abuse will void the limited warranty of the product.

For further information, please contact us:

Chat with us: xbrand.us



Simply point your phone camera towards the QR code or see our website

Email: customerservice@ecintel.com

Please use your smart phone camera to scan the QR code. Simply point your camera and let the camera scan the code below, and click on the link that opens up.



<https://xbrand.us/product/HC-7300-GR>

Content..... 2

What is included..... 3

Assembly instructions 4

YouTube video instruction 5

Warranty..... 6

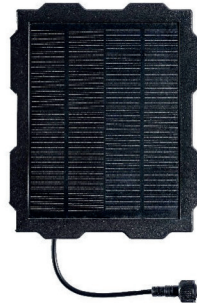
What is included



A. Fountain Top



B. Screw



C. Solar Panel



D. Solar Pump

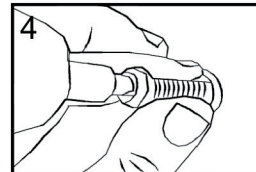
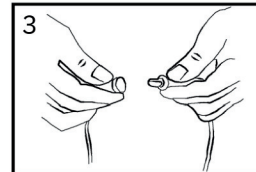
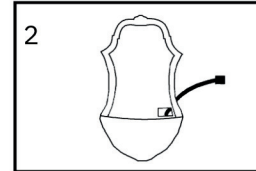
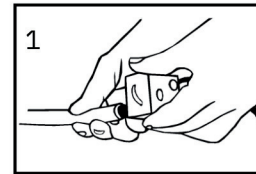


E. Solar Mount



F. Mesh Splash Guard

Assembly instructions



1. Attach the hose to the pump. DO NOT pull on the hose in a downwards motion.
2. Feed the pump's cord through the outlet hole in the back of the fountain.
3. Connect the pump's cord to the adapter,
4. Hang on the wall using the attached screw set, fill the basin with water, and plug it in.



**Scan the QR code for
detailed instructions**

<https://xbrand.us/product/HC-7300-GR>