



ITEM #0437515

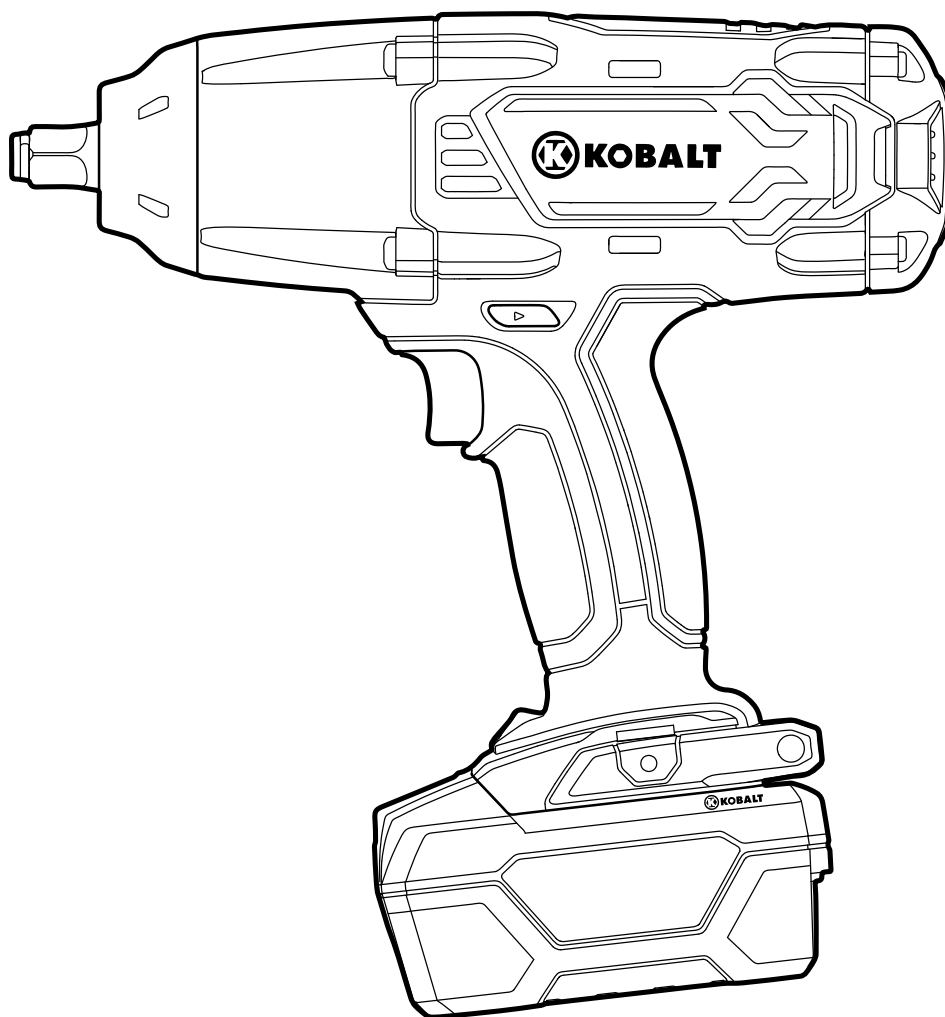
20-VOLT IMPACT WRENCH

KOBALT® and the K Design® are registered trademarks of LF, LLC. All Rights Reserved.

MODEL #K20LW-26A

Français p. 11

Español p. 21



ATTACH YOUR RECEIPT HERE

Serial Number _____ Purchase Date _____



Questions, problems, missing parts? Before returning to your retailer, call our customer service department at 1-888-3KOBALT (1-800-356-2258), 8 a.m.-8 p.m., EST, Monday - Friday.

AB12443

kobalttools.com



TABLE OF CONTENTS

Product Specifications 2

Safety Information 3

Preparation 5

Package Contents 6

Operating Instructions 7

Care and Maintenance 10

Troubleshooting 10

Warranty 10

PRODUCT SPECIFICATIONS

COMPONENT	SPECIFICATIONS
Motor	20V D/C
Switch	VSR (Variable Speed Reversible)
No-load speed	0-1,900 RPM
Impacts per minute	0-2,100 IPM
Maximum torque	350 ft. lb.



SAFETY INFORMATION

Know the Tool

To operate this tool, carefully read this manual and all labels affixed to the impact wrench before using it. Keep this manual available for future reference.

Important

This tool should only be serviced by a qualified service technician.

Read all Instructions Thoroughly

General Safety Rules for all Power Tools



WARNING: Read all safety warnings and all instructions. Failure to follow all warnings and instructions may result in electric shock, fire and/or serious injury.

Save all warnings and instructions for future reference

The term “power tool” in the warnings refers to your mains operated (corded) power tool or battery operated (cordless) power tool.

Work Area Safety

- **Keep the work area clean and well lit.** Cluttered and dark areas invite accidents.
- **Do not operate power tools in explosive atmospheres, such as in the presence of flammable liquids, gases or dust.** Power tools create sparks, which may ignite the dust or fumes.
- **Keep children and bystanders away while operating a power tool.** Distractions can cause you to lose control.

Electrical Safety

- **Power tool plugs must match the outlet. Never modify the plug in any way. Do not use any adaptor plugs with earthed (grounded) power tools.** Unmodified plugs and matching outlets will reduce the risk of electric shock.
- **Avoid body contact with earthed or grounded surfaces such as pipes, radiators, ranges and refrigerators.** There is an increased risk of electric shock if your body is earthed or grounded.
- **Do not expose power tools to rain or wet conditions.** Water entering a power tool will increase the risk of electric shock.
- **Do not abuse the cord. Never use the cord for carrying, pulling or unplugging the power tool. Keep the cord away from heat, oil, sharp edges or moving parts.** Damaged or entangled cords increase the risk of electric shock.
- **When operating a power tool outdoors, use an extension cord suitable for outdoor use.** Use of a cord suitable for outdoor use reduces the risk of electric shock.
- **If operating a power tool in a damp location is unavoidable, use a ground-fault circuit interrupter (GFCI) protected supply.** Use of a GFCI reduces the risk of electric shock.



SAFETY INFORMATION

Personal Safety

- **Stay alert, watch what you are doing and use common sense when operating a power tool. Do not use a power tool while you are tired or under the influence of drugs, alcohol or medication.** A moment of inattention while operating power tools may result in serious personal injury.
- **Use personal protective equipment. Always wear eye protection.** Protective equipment such as dust mask, non-skid safety shoes, hard hat, or hearing protection, used for appropriate conditions, will reduce personal injuries.
- **Prevent unintentional starting. Ensure that the switch is in the off-position before connecting to a power source and/or battery pack, picking up or carrying the tool.** Carrying power tools with your finger on the switch or energizing power tools that have the switch on invites accidents.
- **Remove any adjusting key or wrench before turning the power tool on.** A wrench or a key left attached to a rotating part of the power tool may result in personal injury.
- **Do not overreach. Keep proper footing and balance at all times.** This enables better control of the power tool in unexpected situations.
- **Dress properly. Do not wear loose clothing or jewelry. Keep your hair, clothing and gloves away from moving parts.** Loose clothing, jewelry or long hair can be caught in moving parts.
- **If devices are provided for the connection of dust-extraction and collection, ensure that these are connected and properly used.** Use of these devices can reduce dust-related hazards.

Power Tool Use and Care

- **Do not force the power tool. Use the correct power tool for your application.** The correct power tool will do the job better and more safely at the rate for which it was designed.
- **Do not use the power tool if the switch does not turn it on and off.** Any power tool that cannot be controlled with the switch is dangerous and must be repaired.
- **Disconnect the plug from the power source and/or the battery pack from the power tool before making any adjustments, changing accessories, or storing power tools.** Such preventive safety measures reduce the risk of starting the power tool accidentally.
- **Store idle power tools out of the reach of children and do not allow persons unfamiliar with the power tool or these instructions to operate the power tool.** Power tools are dangerous in the hands of untrained users.
- **Maintain power tools. Check for misalignment or binding of moving parts, breakage of parts and any other condition that may affect the power tool's operation. If damaged, have the power tool repaired before use.** Many accidents are caused by poorly maintained power tools.
- **Keep cutting tools sharp and clean.** Properly maintained cutting tools with sharp cutting edges are less likely to bind and are easier to control.
- **Use the power tool, accessories, tool bits, etc. in accordance with these instructions, taking into account the working conditions and the work to be performed.** Use of the power tool for operations different from those intended could result in a hazardous situation.



SAFETY INFORMATION

Battery Tool Use and Care

- **Recharge only with the charger specified by the manufacturer.** A charger that is suitable for one type of battery pack may create a risk of fire when used with another battery pack.
- **Use power tools only with specifically designated battery packs.** Use of any other battery packs may create a risk of injury and fire.
- **When a battery pack is not in use, keep it away from other metal objects, such as paper clips, coins, keys, nails, screws or other small metal objects that can make a connection from one terminal to another.** Shorting the battery terminals together may cause burns or a fire.
- **Under abusive conditions, liquid may be ejected from the battery; avoid contact. If contact accidentally occurs, flush with water. If liquid contacts eyes, seek medical help.** Liquid ejected from the battery may cause irritation or burns.

Service

- **Have your power tool serviced by a qualified repair person using only identical replacement parts.** This will ensure that the safety of the power tool is maintained.

Specific Safety Rules for Impact Wrench

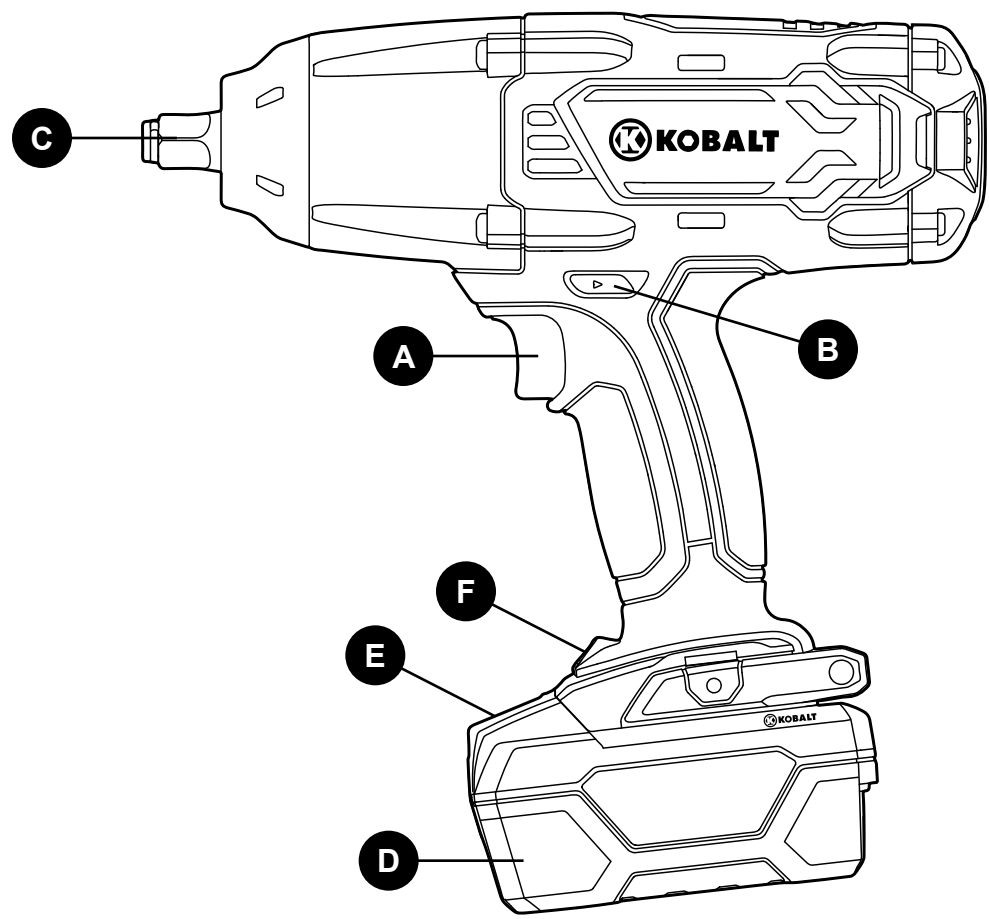
- **Hold a power tool by the insulated gripping surfaces when performing an operation where the fastener may contact hidden wiring.** Fasteners contacting a “live” wire may make exposed metal parts of the power tool “live” and could give the operator an electric shock.
- **Use clamps or another practical way to support and secure the workpiece to a stable platform.** Holding the work by hand or against your body leaves it unstable and may lead to loss of control.
- **Always wait until the machine has come to a complete stop before placing it down.** The tool insert can jam and lead to loss of control over the power tool.
- **Before performing any kind of work on the machine (e.g., maintenance, tool change, etc.), as well as when transporting and storing it, always set the rotational direction switch to the center position.** Unintentional activation of the On/Off switch may result in personal injury.
- **Do not open the battery. There is risk of a short circuit.**
- **Protect the battery from heat and fire.** There is risk of explosion.

PREPARATION


Know Your Cordless Impact Wrench

Before attempting to use the impact wrench, familiarize yourself with all of its operating features and safety requirements.

PACKAGE CONTENTS



PARTS	DESCRIPTION
A	Variable-speed trigger switch
B	Direction-of-rotation selector (forward/center lock/reverse)
C	1/2 in. square driver
D	Battery pack
E	Battery-release button
F	LED work light

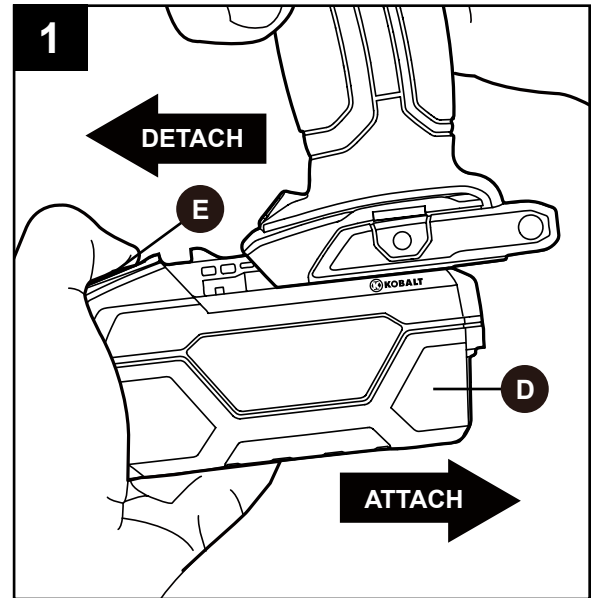
 **WARNING:** Do not allow familiarity with the impact wrench to cause carelessness. Remember that one careless moment is enough to cause severe injury. Before attempting to use any tool, be sure to become familiar with all of the operating features and safety instructions.

OPERATING INSTRUCTIONS

1. To Attach Battery Pack

- Place the direction-of-rotation selector (B) in the center (locked) position.
- Align the raised portion on the battery pack (D) with the grooves on the bottom of the impact wrench, and then slide the battery pack onto the impact wrench as shown.
- Make sure that the latch on the battery pack snaps into place and the battery pack is secured to the impact wrench before beginning operation.

NOTICE: When placing the battery pack on the tool, be sure that the raised rib on battery pack aligns with the groove on the impact wrench and the latches snap into place properly. Improper assembly of the battery pack can cause damage to internal components.



To Detach Battery Pack (Fig. 1)

- Place the direction-of-rotation selector (B) in the center (locked) position.
- Press the battery-release button (E) to release the battery pack.
- Pull forward on the battery pack to remove it from the impact wrench.

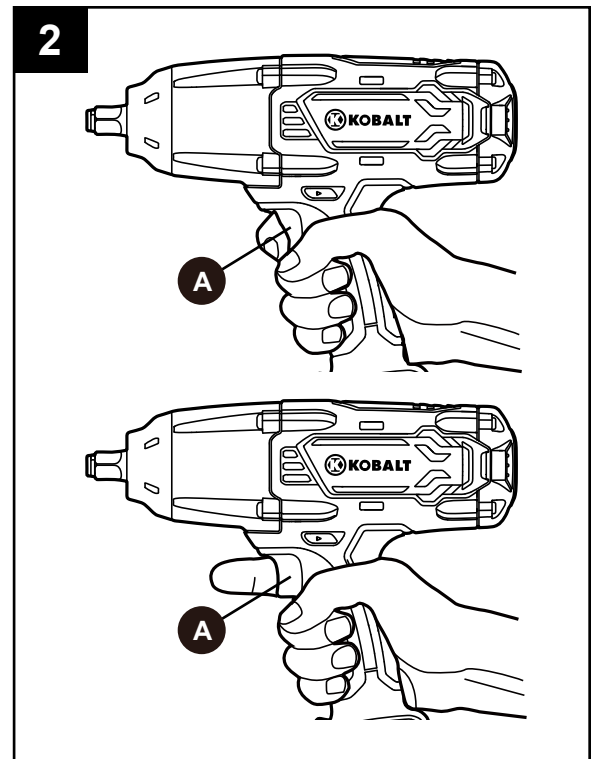
WARNING: Battery tools are always in operating condition. Therefore, the direction-of-rotation selector should always be locked (center) when the tool is not in use or when carrying the tool at your side.

2. Trigger Switch

To turn the impact wrench ON, depress the trigger switch (A). To turn it OFF, release the trigger switch.

Variable Speed

The variable-speed trigger switch delivers higher speed with increased trigger pressure and lower speed with decreased trigger pressure.



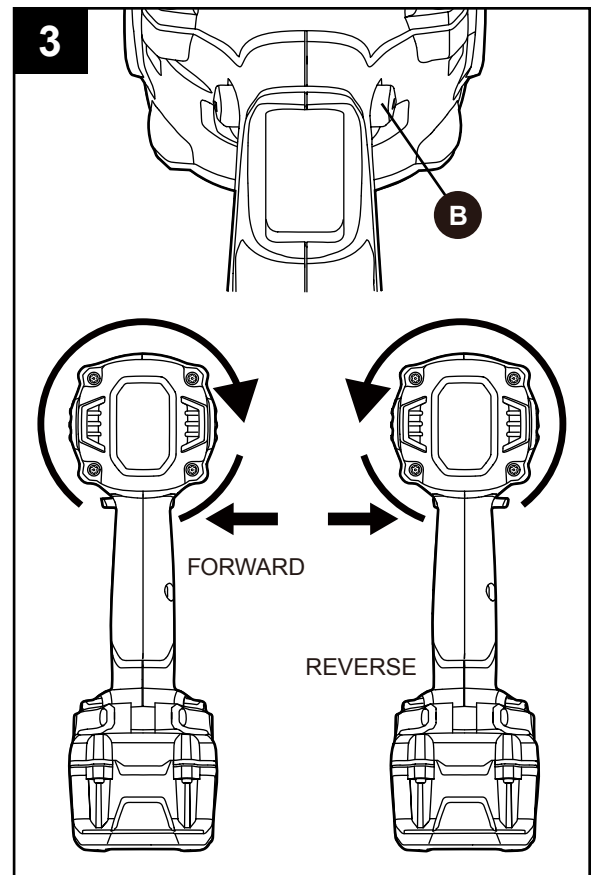
3. Direction-Of-Rotation Selector (Forward/Center Lock/Reverse)

The direction of bit rotation is reversible and is controlled by a selector located above the trigger switch (A). With the impact wrench held in the normal operating position, pointing away from you:

- Position the direction-of-rotation selector (B) to the left of the tool for forward rotation.
- Position the direction-of-rotation selector to the right of the tool for reverse rotation.
- Setting the switch in the OFF (center lock) position helps reduce the possibility of accidental starting when not in use.

NOTICE: To prevent gear damage, always allow the impact wrench to come to a complete stop before changing the direction of rotation.

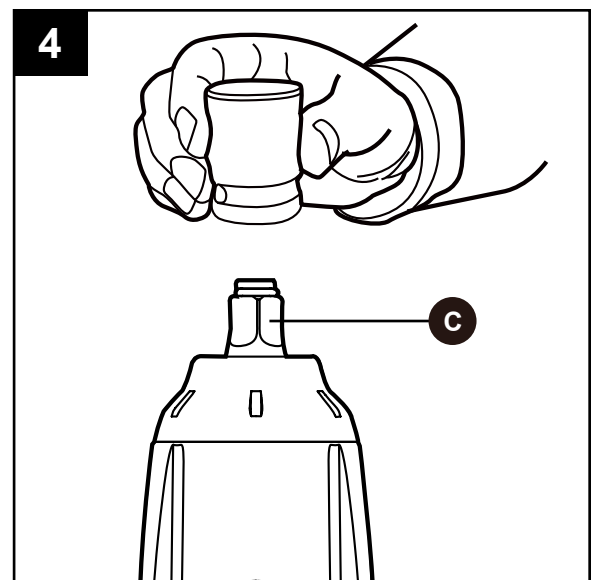
NOTICE: The impact wrench will not run unless the direction-of-rotation selector is engaged fully to the left or right.



4. Installing and Removing Socket

- Lock the trigger switch by placing the direction-of-rotation-selector (B) in the OFF (center) position.
- To install a 1/2 in. socket, simply push it completely onto the square driver (C). To remove, pull it off the square driver.

⚠ WARNING: Only use sockets designed for impact wrenches. Sockets not designed for impact wrenches could break and result in user injury. Inspect sockets prior to use to ensure that they have no cracks or other visible damage.



Tightening Fasteners



WARNING: Battery tools are always in operating condition. Therefore, the direction-of-rotation selector should always be locked when not in use or carrying at your side.

Tighten fasteners with the impact wrench. The proper fastening torque may differ depending on the type or size of the bolt, the material of the workpiece to be fastened, etc. Before starting your job, always perform a test operation to determine the proper fastening time for your bolt or nut.

- a. Check the direction-of-rotation selector for the correct setting (forward or reverse).
- b. Hold the tool firmly and place the socket over the bolt or nut.
- c. Depress the trigger switch to turn the impact wrench on. The variable-speed trigger switch delivers higher speed with increased trigger pressure and lower speed with decreased trigger pressure.
- d. Fasten the bolt or nut to the proper torque.
- e. To turn the impact wrench OFF, release the trigger switch.
- f. After fastening, always check the torque with a torque wrench.

NOTICE: Hold the tool straight along the axis of the bolt or nut.

NOTICE: Excessive fastening torque may damage the bolt/nut or socket.

Practice with various fasteners, noting the length of time required to reach the desired torque. Check the tightness with a torque wrench. If the fasteners are too tight, reduce the impacting time. If they are not tight enough, increase the impacting time.

The fastening torque is affected by a wide variety of factors, including the following:

- Socket
 - Failure to use the correct size socket will cause a reduction in the fastening torque. A worn socket (wear on the hex end or square end) will cause a reduction in the fastening torque.
- Bolt
 - Although the torque coefficient and the class of bolt may be the same, the proper fastening torque will differ according to the diameter of the bolt. Although the diameters of bolts may be the same, the proper fastening torque will differ according to the torque coefficient, the class of bolt and the bolt length.
- The use of a universal joint or an extension bar (both available separately) will reduce the fastening force of the impact wrench somewhat. Compensate by fastening for a longer period of time.
- The manner of holding the tool or the material to be fastened will affect the torque.

Loosening Fasteners

The torque that is required to loosen a fastener averages 75% to 80% of the tightening torque, depending on the condition of the contacting surfaces. However, if rust or corrosion causes seizing, more torque may be required.


CARE AND MAINTENANCE

 All maintenance should only be carried out by an authorized service organization.

Cleaning

Before cleaning or performing any maintenance, remove the battery pack from the tool. For safe and proper working, always keep the tool and its ventilation slots clean. Always use only a soft, dry cloth to clean your impact wrench, never use any detergent or alcohol.

TROUBLESHOOTING

 **WARNING:** Turn the switch to the “OFF” position and remove the battery pack from the tool before performing troubleshooting procedures.

PROBLEM	POSSIBLE CAUSE	CORRECTIVE ACTION
The impact wrench does not work	Battery is depleted	Charge the battery
Sockets cannot be installed	An adapter is required	Use suitable adapter
Motor overheating	Cooling vents are obstructed	Clean, clear vents. Do not cover vents with hand during operation

5-YEAR HASSLE-FREE WARRANTY

This impact wrench is warranted to the original purchaser from the original purchase date for five (5) years subject to the warranty coverage described herein.

This impact wrench is warranted for the original user to be free from defects in material and workmanship.

If you believe that the impact wrench is defective at any time during the specified warranty period, simply return the impact wrench along with proof of purchase to the place of purchase for a free replacement or refund, or call 1-888-3KOBALT (1-888-356-2258) for warranty service.

This warranty is void if: defects in materials or workmanship or damages result from repairs or alterations which have been made or attempted by others or the unauthorized use of nonconforming parts; the damage is due to normal wear, damage is due to abuse (including overloading of the tool beyond capacity), improper maintenance, neglect or accident; or the damage is due to the use of the tool after partial failure or use with improper accessories or unauthorized repair or alteration.

This warranty excludes blades, bits, bulbs and accessories.

This warranty gives you specific legal rights, and you may also have other rights that vary from state to state.

Printed in China

KOBALT® and the K Design® are registered trademarks of LF, LLC. All Rights Reserved.

kobalttools.com  **KOBALT**