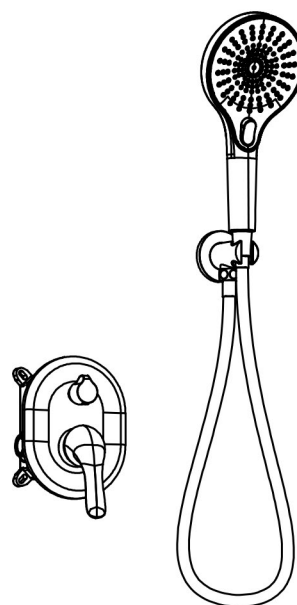
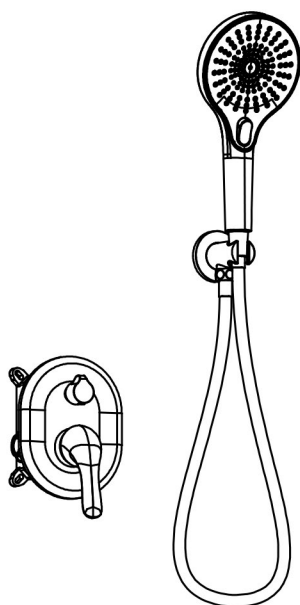


Installation Instructions

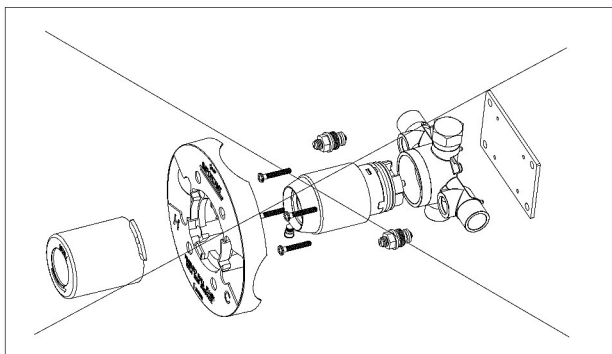


KCHH0010

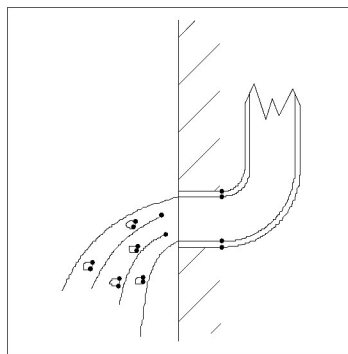
KCHH0012

• INSTALLATION CONDITION

1. Refer to the 《Product lists》
when unpacking check all parts are present.
2. Do not disassemble the valve body.
3. Connect the hot and cold supply lines to the hot and cold inlets on the shower valve body.
4. Make sure to flush out the supply lines to clearout any possible debris before installation.
5. After installation check all connections for any possible leaks.

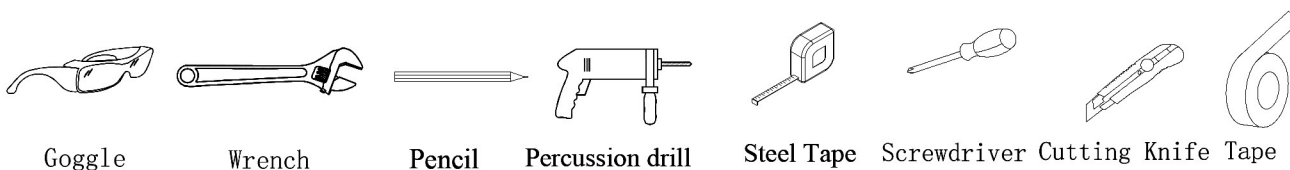


Do not disassemble



Flush out the water lines

Tools Needed



Goggle

Wrench

Pencil

Percussion drill

Steel Tape

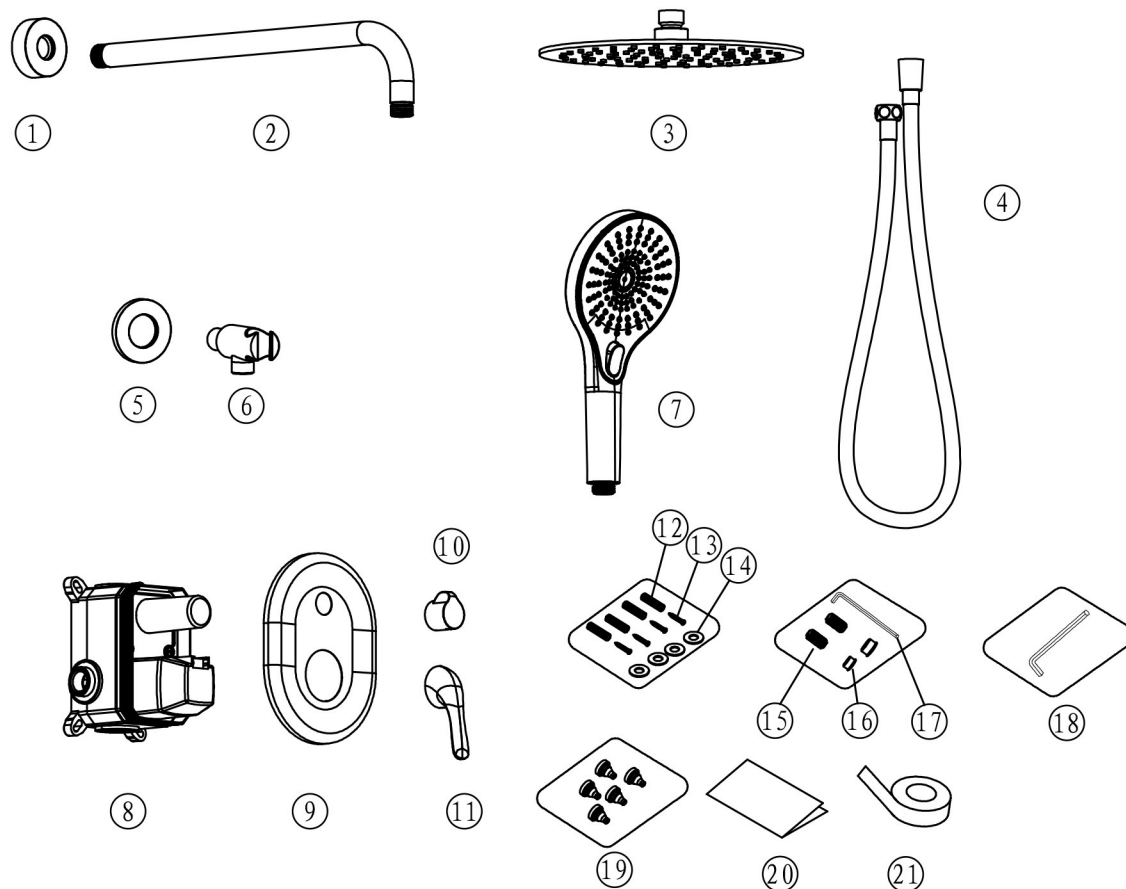
Screwdriver

Cutting Knife

Tape

● PRODUCT LISTS

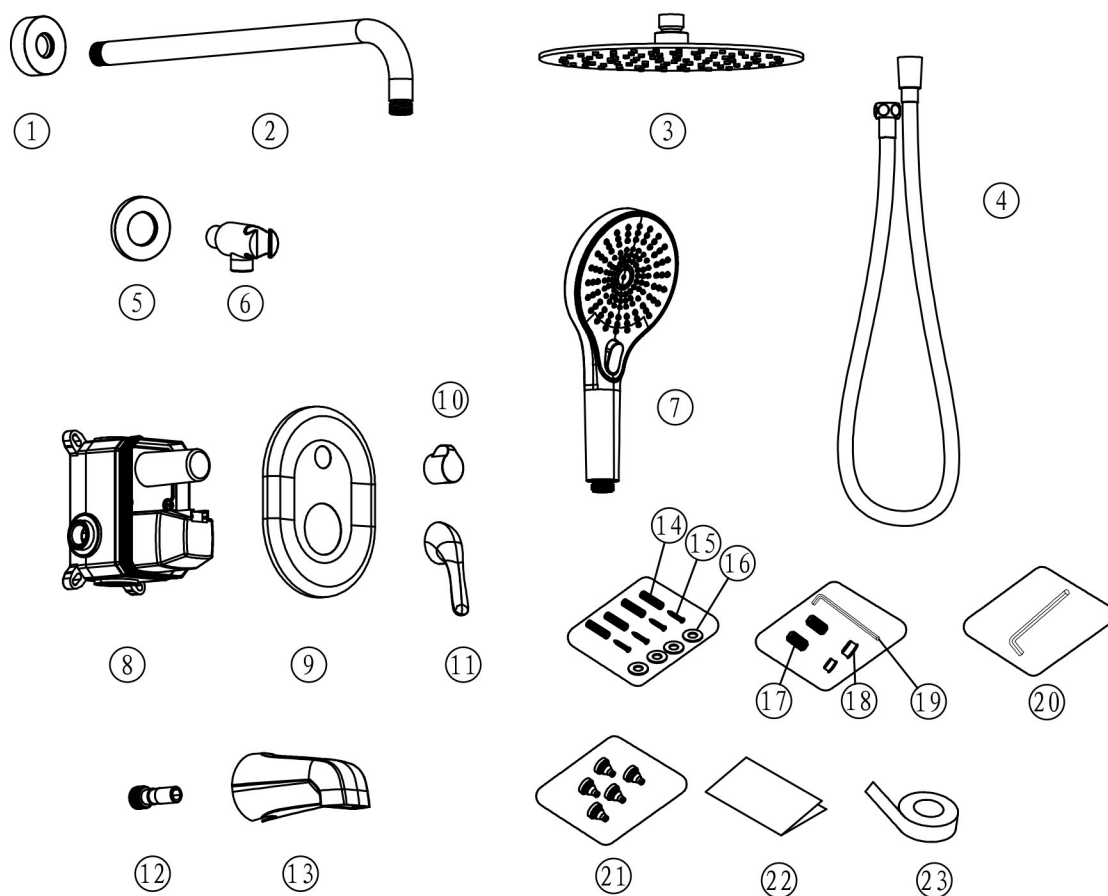
MODEL: KCHH0010



NO.	Part Name	QTY.	NO.	Part Name	QTY.
1	Shower arm escutcheon	1	12	Plastic anchor	4
2	Shower arm	1	13	Anchor screw	4
3	Shower head	1	14	Washers	4
4	Shower hose	1	15	Handle screw	2
5	Hand Shower arm escutcheon	1	16	Handle screw hole plug	2
6	Hand Shower arm	1	17	H2.5 Allen wrench	1
7	Hand Shower	1	18	H4.0 Allen wrench	1
8	Valve body	1	19	Silicone nozzle	5
9	Valve Trim Plate	1	20	Instruction manual	1
10	Diverter handle	1	21	Teflon Tape	1
11	Handle	1			

● PRODUCT LISTS

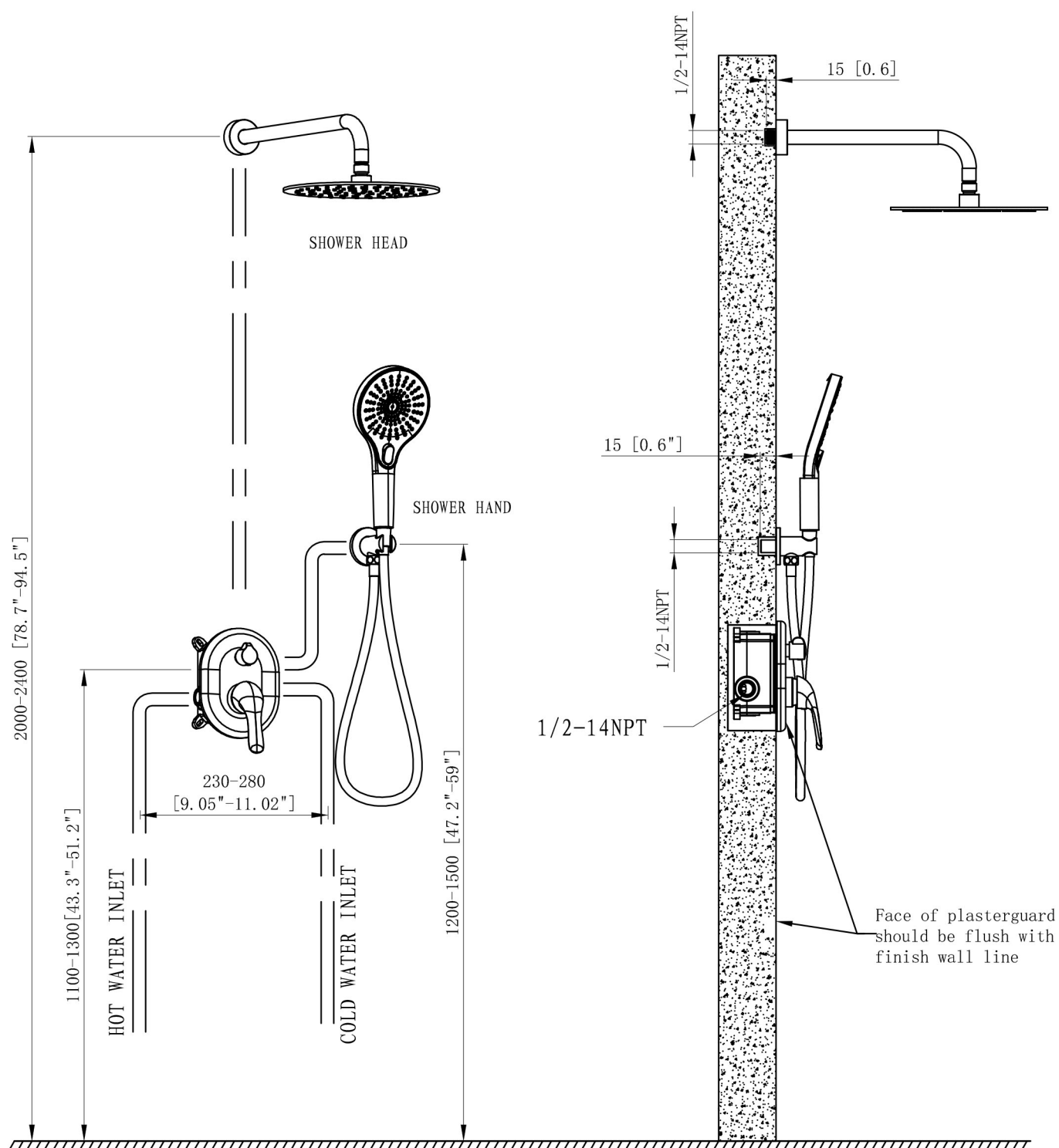
MODEL: KCHH0012



NO.	Part Name	QTY.	NO.	Part Name	QTY.
1	Shower arm escutcheon	1	13	Spout	1
2	Shower arm	1	14	Plastic anchor	4
3	Shower head	1	15	Anchor screw	4
4	Shower hose	1	16	Washers	4
5	Hand Shower arm escutcheon	1	17	Handle screw	2
6	Hand Shower arm	1	18	Handle screw hole plug	2
7	Hand Shower	1	19	H2.5 Allen wrench	1
8	Valve body	1	20	H4.0 Allen wrench	1
9	Valve Trim Plate	1	21	Silicone nozzle	5
10	Diverter handle	1	22	Instruction manual	1
11	Handle	1	23	Teflon Tape	1
12	Spout connector	1			

● OUTLETS INSTALLATION

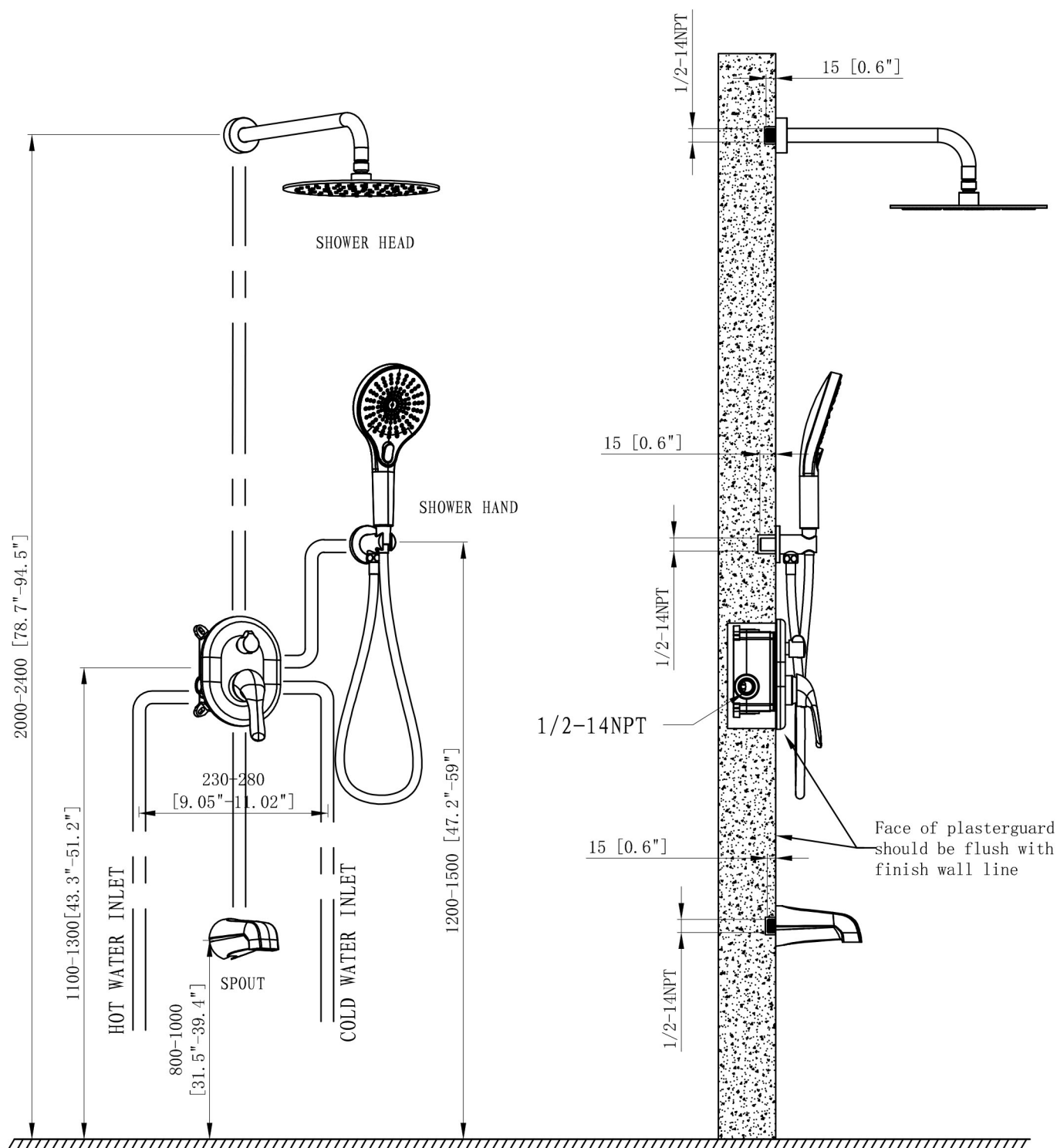
MODEL:KCHH0010



Unit: MM [INCH]

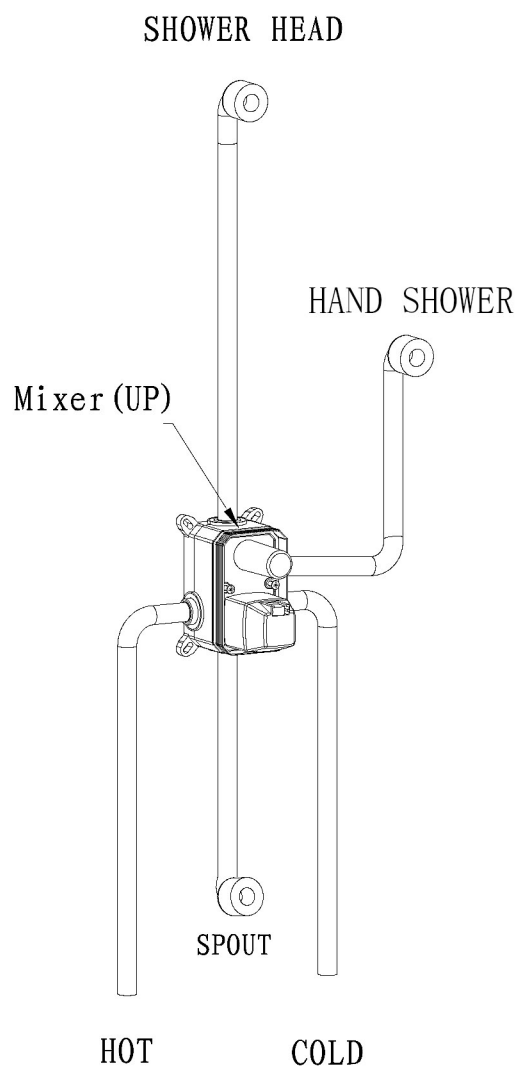
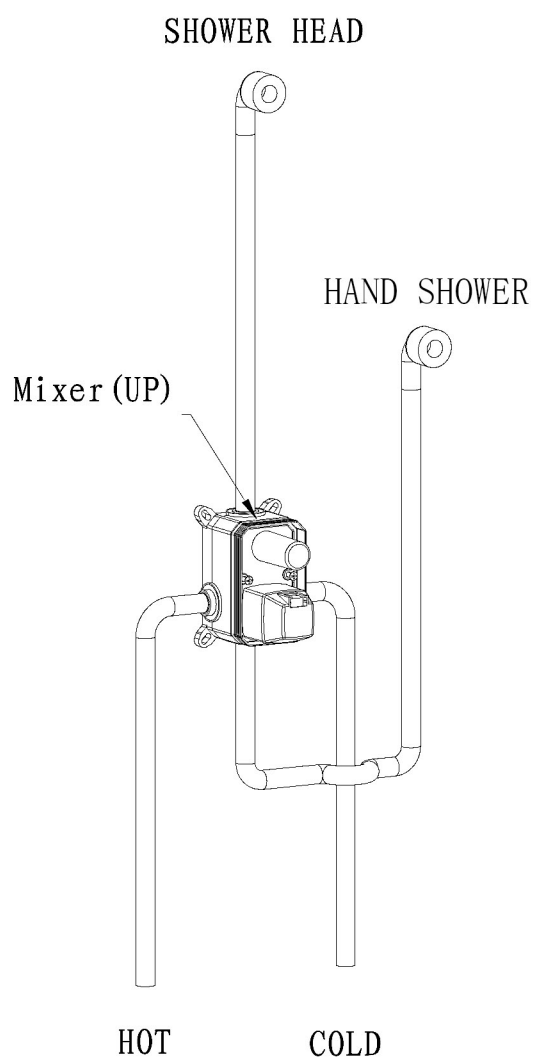
● OUTLETS INSTALLATION

MODEL: KCHH0012



Unit: MM [INCH]

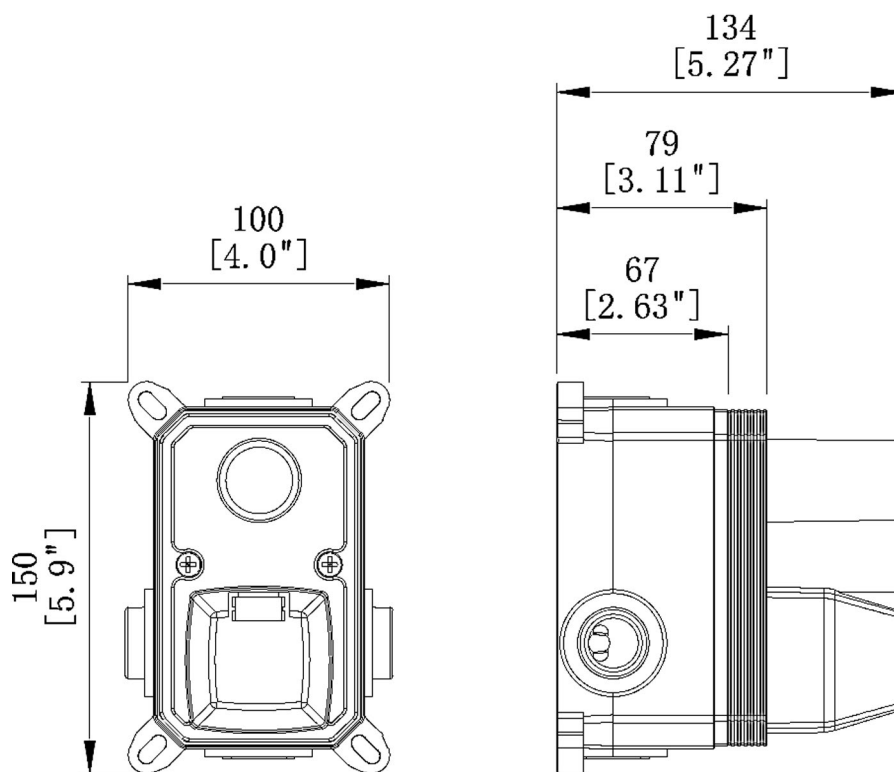
• INSTALLATION STEPS OF MAIN BODY



Step 1:

As shown in the image, pay attention to the direction of the valve body making sure that "UP" on the installation box is facing the correct direction.

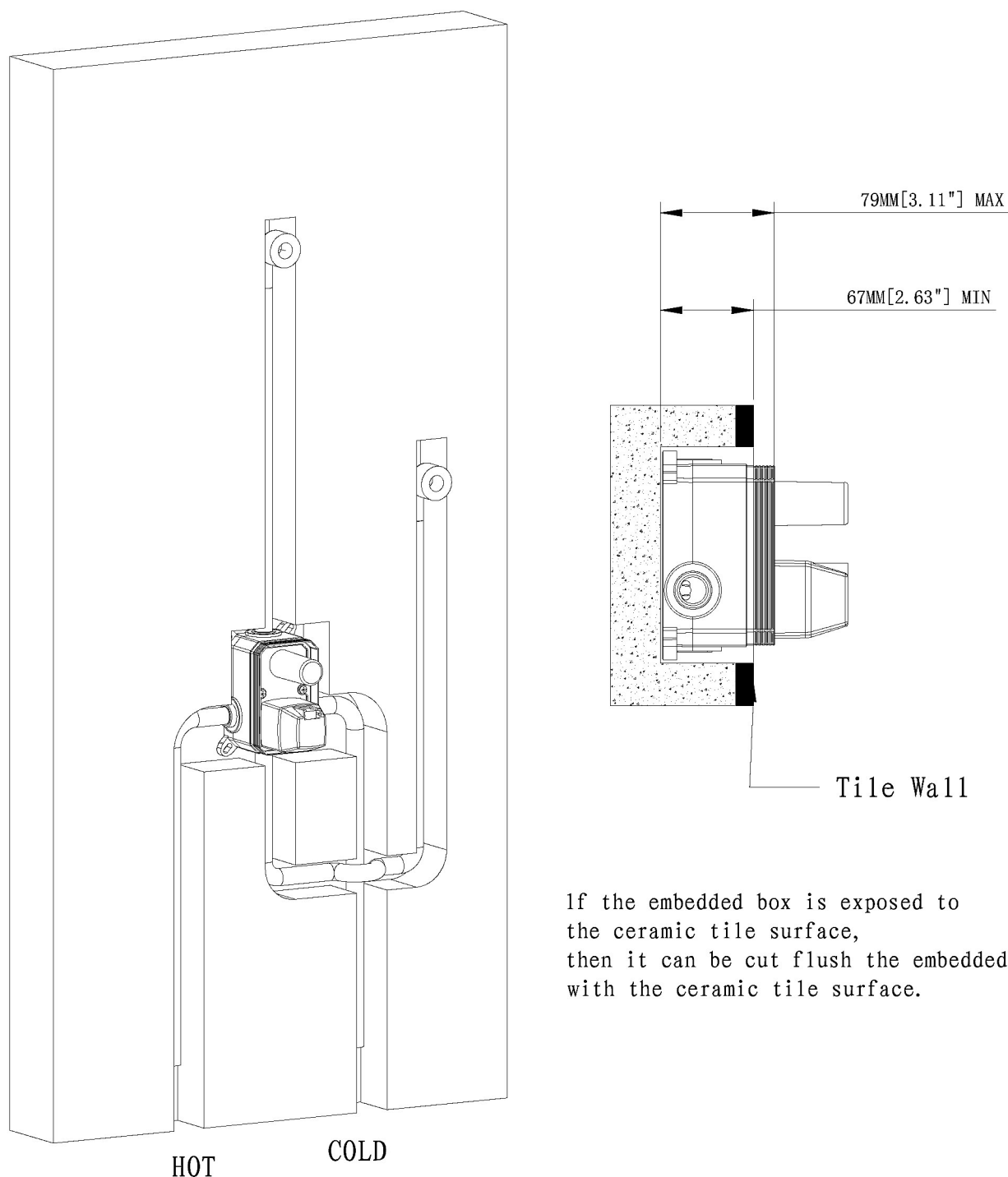
• INSTALLATION STEPS OF MAIN BODY



Step 2:

This is only for a concrete or block wall. In the USA it is mostly wood construction and this step would not be needed.

● INSTALLATION STEPS OF MAIN BODY

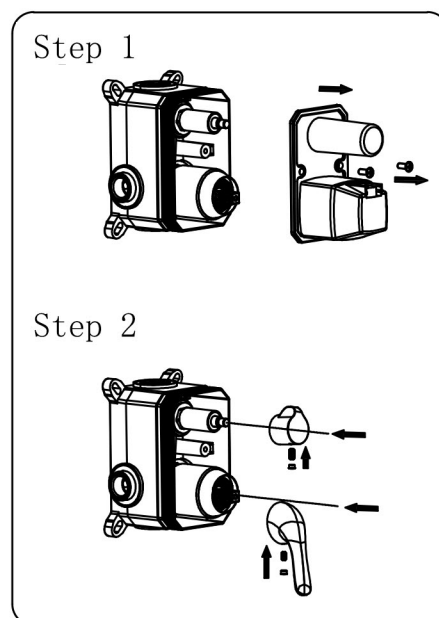
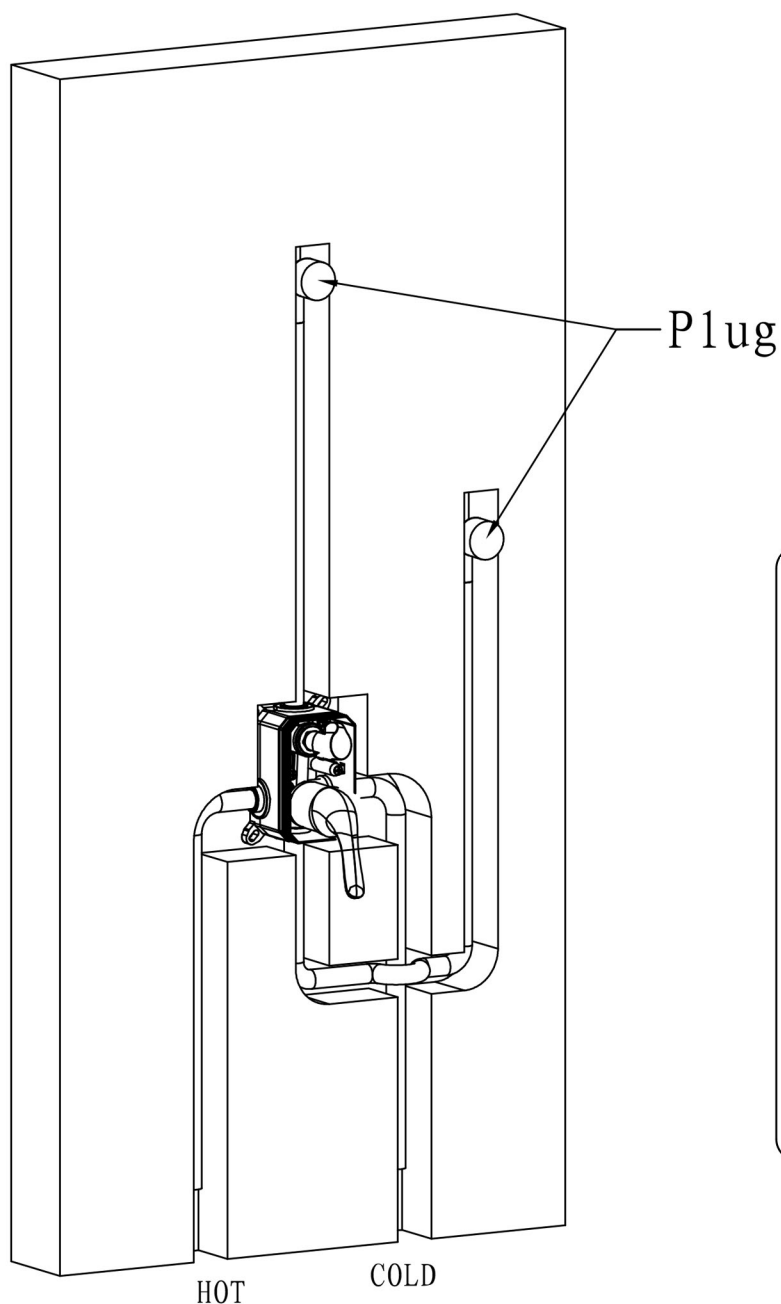


If the embedded box is exposed to the ceramic tile surface, then it can be cut flush the embedded box with the ceramic tile surface.

Step 3:

Fasten the valve body to the wall using screws ensuring the valve is at the proper depth in the wall.

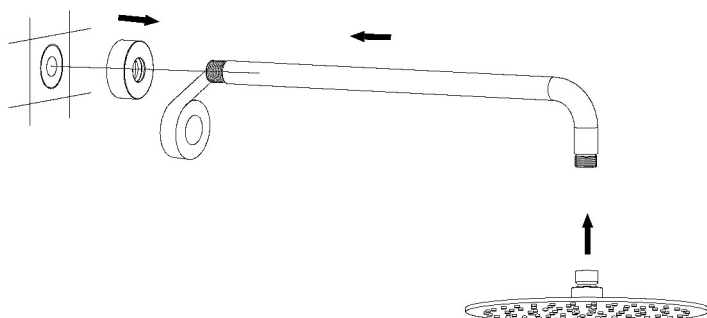
● INSTALLATION STEPS OF MAIN BODY



Step 4:

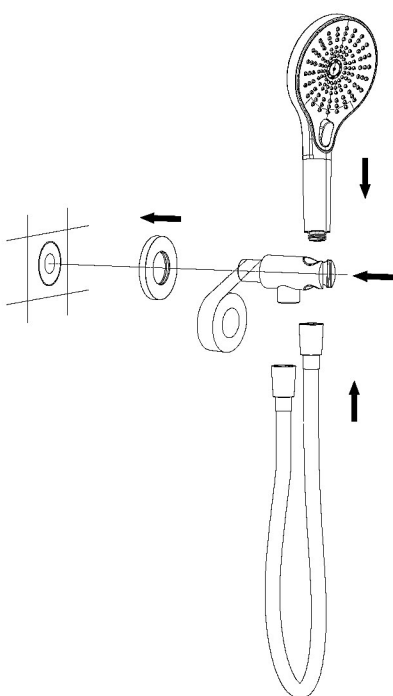
1. Remove the plastic cover from the valve body.
2. Place the valve handle on to ensure the valve is in the off position, then remove the handle and set it aside. Turn on the water supply to the valve to check the hot, cold and mix connections for any possible leaks. If there is no leaks proceed.
3. Place the valve trim cover onto the valve body, the handle, the handle set screw and screw hole plug.

● INSTALLATION STEPS SHOWER ARM & SHOWER HEAD



1. Slide the shower arm escutcheon onto the end of the shower arm that will be making a connection at the wall, using teflon tape wrap a total of three complete rotations on this end.
2. Screw this end into the wall securely ensuring the arm is in the proper position.
3. Using teflon tape wrap a total of three complete rotations on the open end of the shower arm, and screw on the shower head on securely.

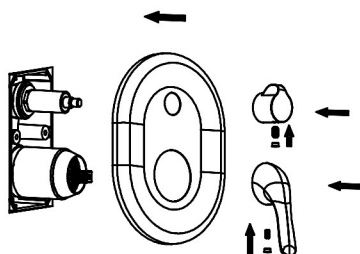
● INSTALLATION STEPS HAND SHOWER HOLDER & SHOWER HAND & SHOWER HOSE



1. Using teflon tape, wrap a total of three complete rotations on the hand shower arm and slide the shower arm escutcheon onto the end of the shower arm.
2. Screw the hand shower arm into the hand shower wall connection securely, ensuring it is in the proper position.
3. Connect the shower hose and hand shower.

● INSTALLATION STEPS

VALVE TRIM PLATE, DIVERTER HANDLE AND VALVE HANDLE

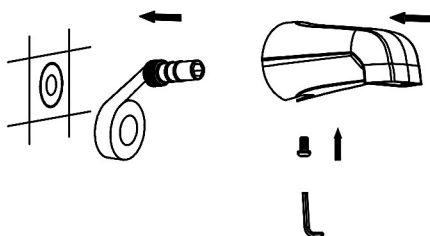


1. Install the valve trim plate to the valve body.
2. Install the diverter handle and the valve handle.
3. Secure both handles using the set screws, then insert the screw hole plugs.

● INSTALLATION STEPS

SPOUT (IF HAVE)

MODEL: KCHH0012



1. Using teflon tape, wrap a total of three complete rotations on the threads of the spout connector, then screw it into the wall connection for the spout.
2. Install the spout onto the wall connection and secure it using the H4.0 Allen wrench ensuring it is in the proper position.

● CARE AND MAINTENANCE

Rinse faucet with clean water and wipe with soft cotton cloth;

Avoid using cleaning powder , harsh cleaning chemicals, brushes, and cloth with coarse surface to prevent scratching and corrosion.

Do not use acid cleaner to clean the faucet as it may cause surface corrosion of the faucet.

If the faucet comes into contact with harmful acid substances, please rinse it with water immediately

● IF A LARGE-SCALE CLEANUP IS NECESSARY FOLLOW THESE PROCEDURES:

1: Use clean water and soft cloth to remove dirt on the surface as much as possible.

2: Use one of the following cleaners to remove dirt on the surface Mild liquid cleaner;

Colorless glass cleaner, powder cleaner which does not have abrasive function and can be dissolved completely;

Polish liquid which does not have abrasive function.

3: After cleaning, remove the cleansing agent with clean water completely and wipe with soft cotton cloth.