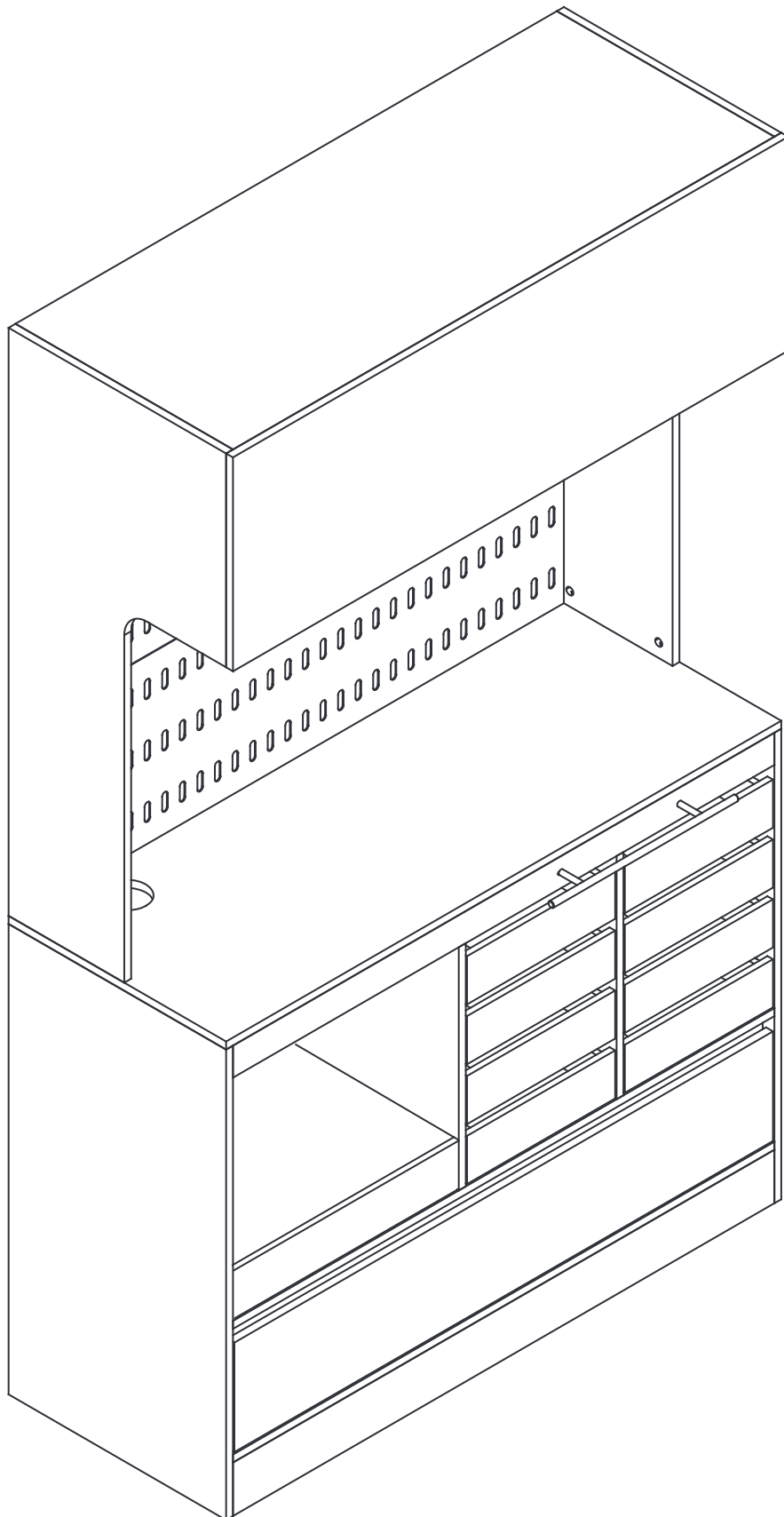
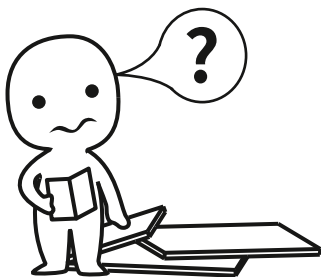


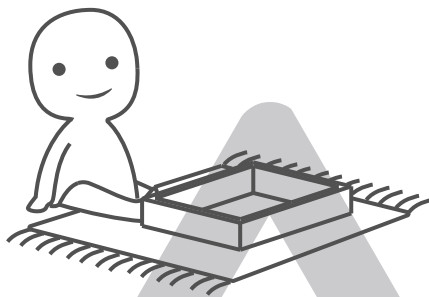
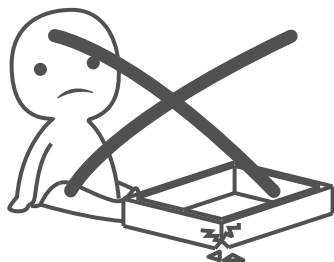
Pantry





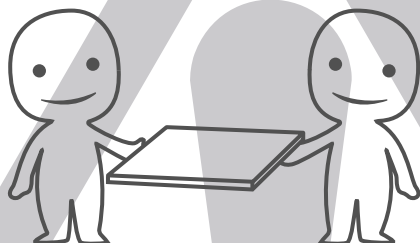
IMPORTANT INFORMATION!

please read the entire manual before starting to assemble and/or using this product. follow the manual thoroughly and keep it for further reference.



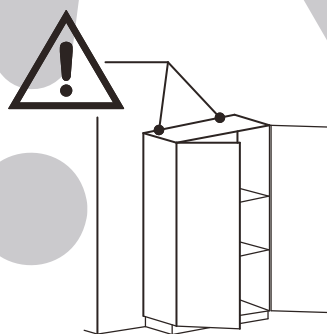
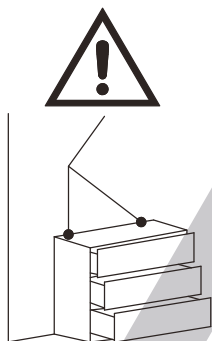
AVOID SCRATCHES!

In order to avoid scratching this furniture should be assembled on a soft layer-could be a rug.



IMPROVE EFFICIENCY !

Try to find a partner to install with you, which can speed up the installation efficiency and shorten the time.



ANTI-TOPPLE WARNING !

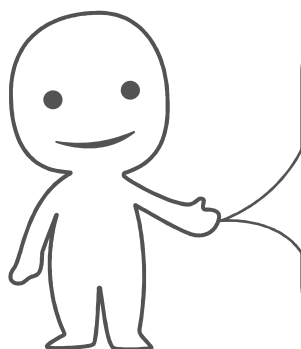
Overturned furniture can cause serious or fatal crush injuries. To prevent tipping over, be sure to use the wall attachment, if not included with this product. Please purchase the wall attachment that fit your wall. If unsure, seek professional advice. Please read and follow each step of the instructions carefully.

IMPORTANT !

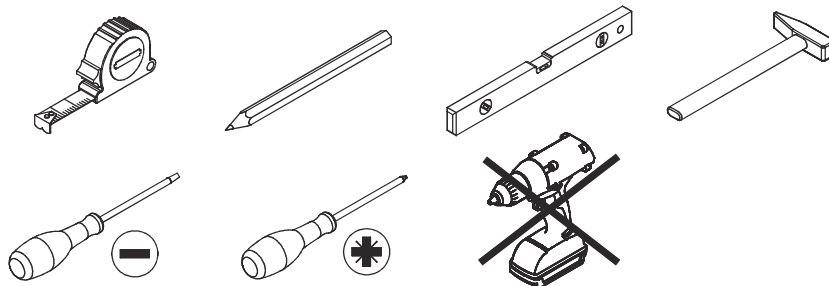
It is important that any product which is assembled using any kind of screw is re-tightened 2 weeks after assembly, and once every 3 months - in order to assure stability through-out the lifespan of the product.

For regular maintenance and cleaning of the product, for the frame, please use a rag dipped in neutral detergent to fully wipe it, and then dry it with a clean rag. For glass materials, wipe with a rag dampened with water glass cleaner, and then dry with a dry rag.

Do not use an electric screwdriver, and do not use too much force when installing, because the board is easy to break.

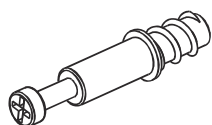


Please prepare the following tools



When installing, please carefully confirm whether each screw corresponds to the manual, accessories with similar shapes can be distinguished by size

A x 140+10



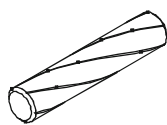
Ø5x 31 mm

B x 52+5



Ø15 x 11 mm

C x 46+4



Ø8x 30 mm

D x 80+8



Ø3 x1 2 mm

E x 8



L=350 mm

F x 88+8

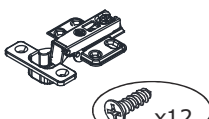


Ø15 x 9.5 mm

G x 5

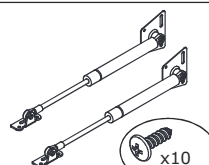


H x 2



Ø3.5 x 14 mm

J x 1



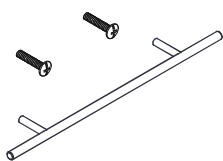
Ø3.5 x 14 mm

K x 16



Ø3x 12 mm

L x 1



M x 14



Ø3 x 10 mm

N x 140

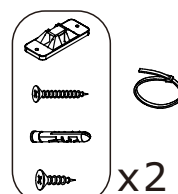


P x 2



L=400 mm

Q x 1

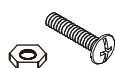


x2

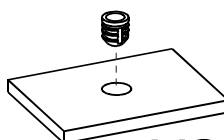
R x 1



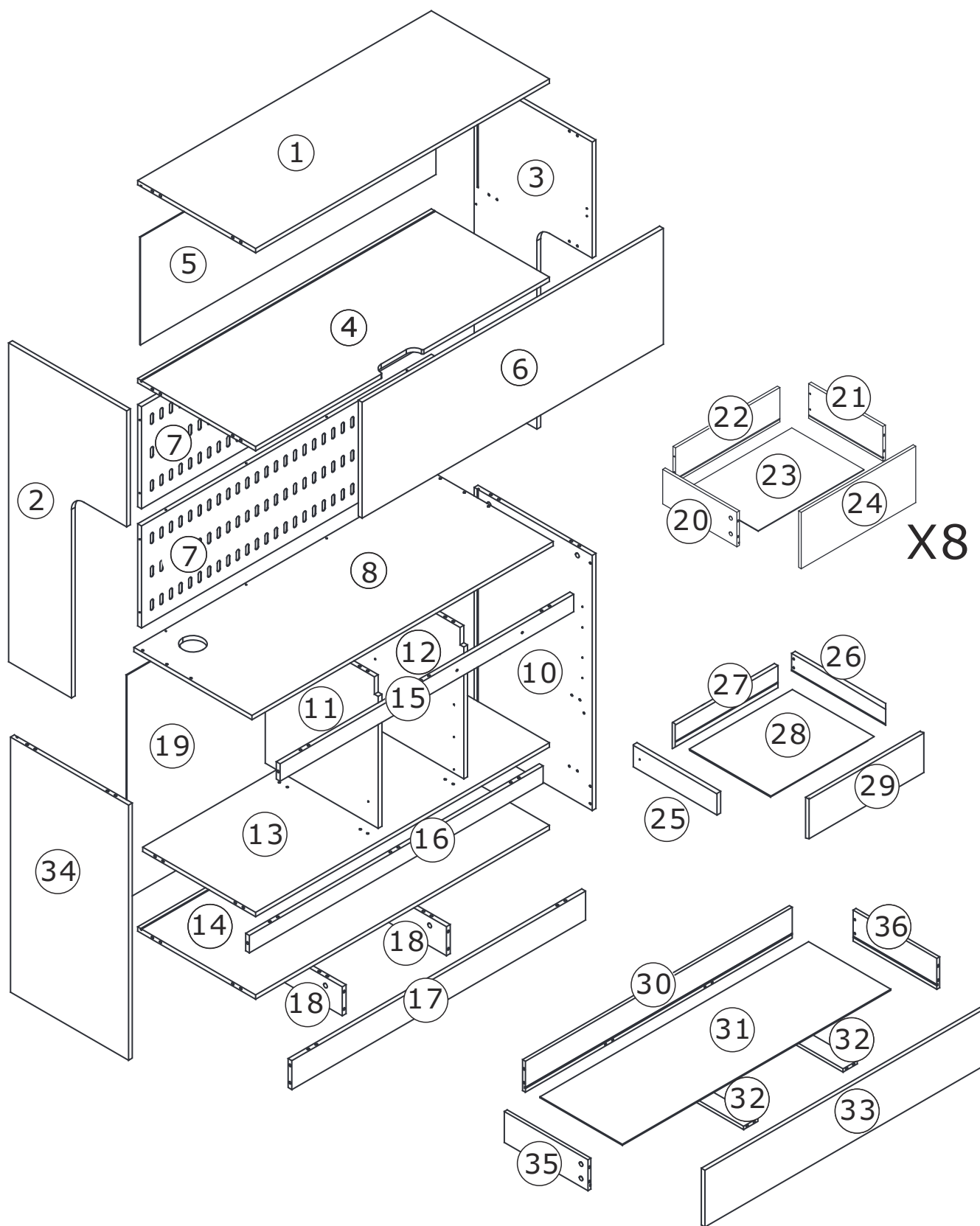
S x 4



White nut



X3

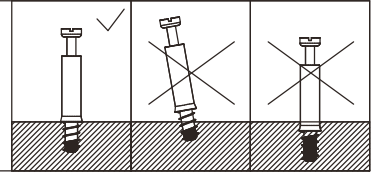
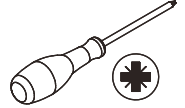


1

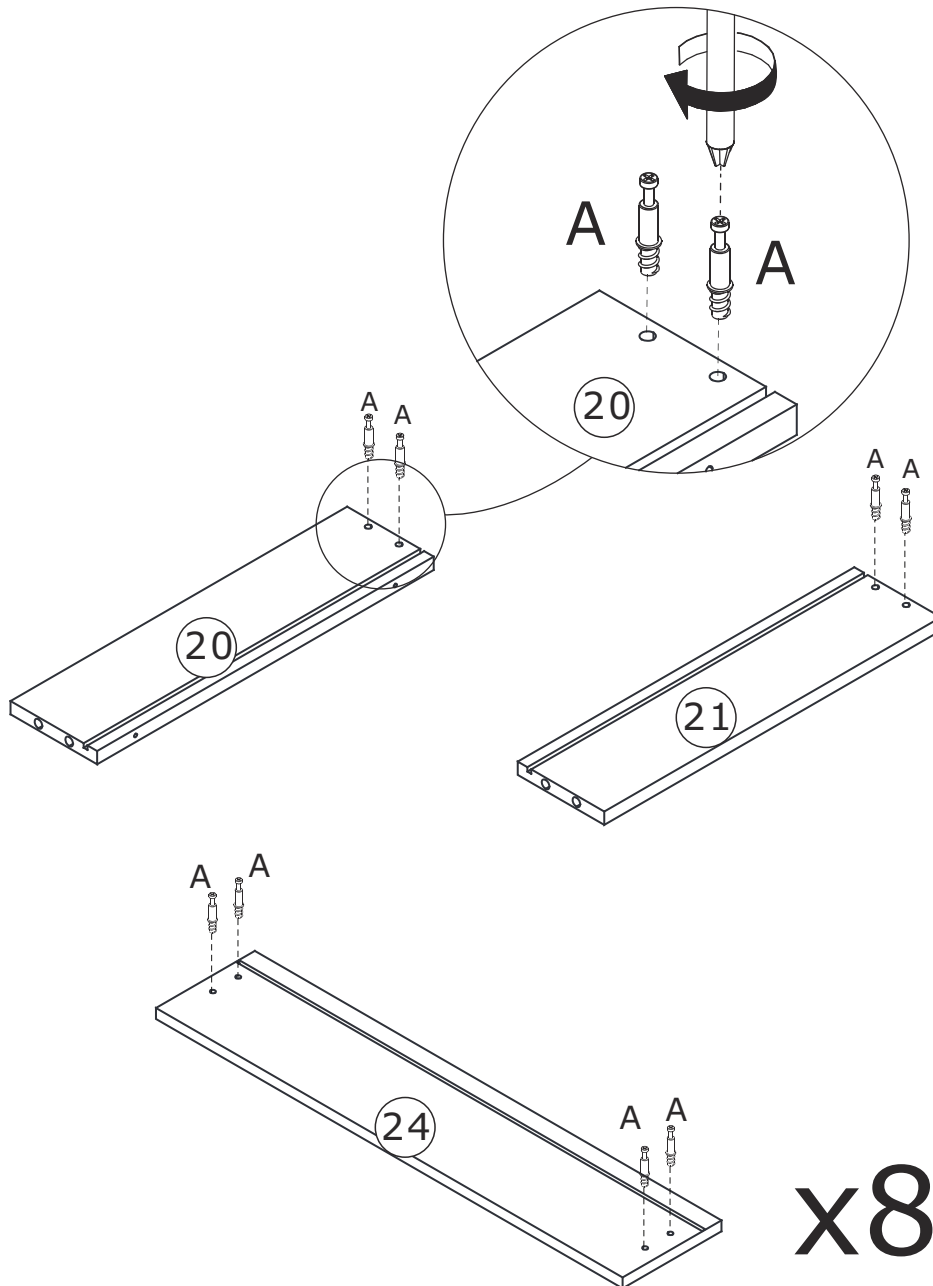
A x 64



Ø 5 x 31 mm



Insert quickfit screw(A) into corresponding holes in plate 20,21 and 24 with a screwdriver as shown.



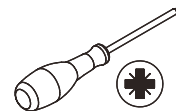
x8

2

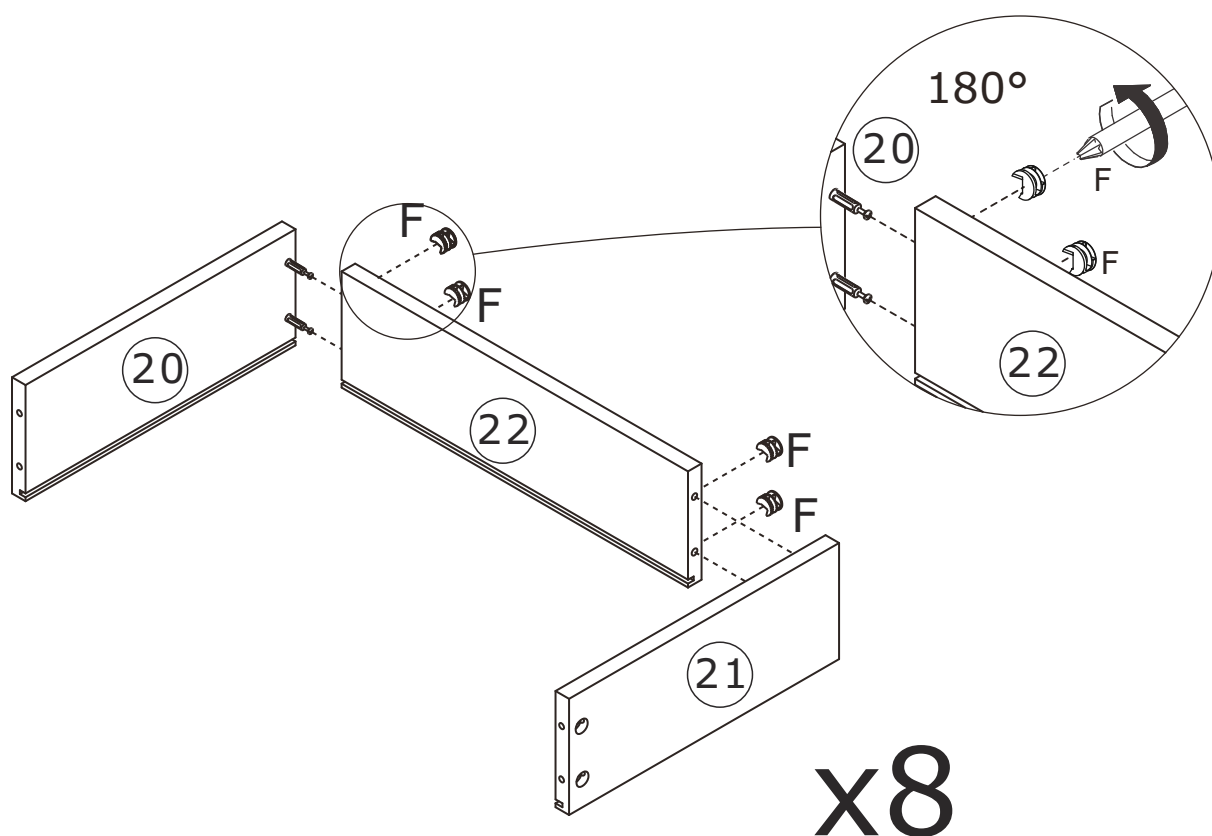
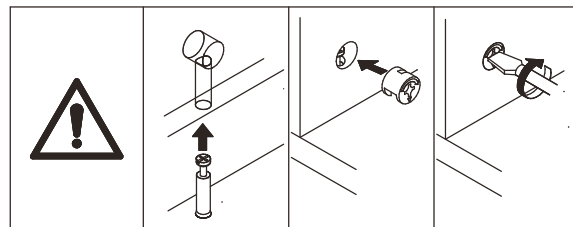
F x 32



Ø 15 x 9.5 mm



Attach plate 20 and 21 to plate 22, insert cam lock(F) into plate 22 and turn clockwise to tighten as shown.



3

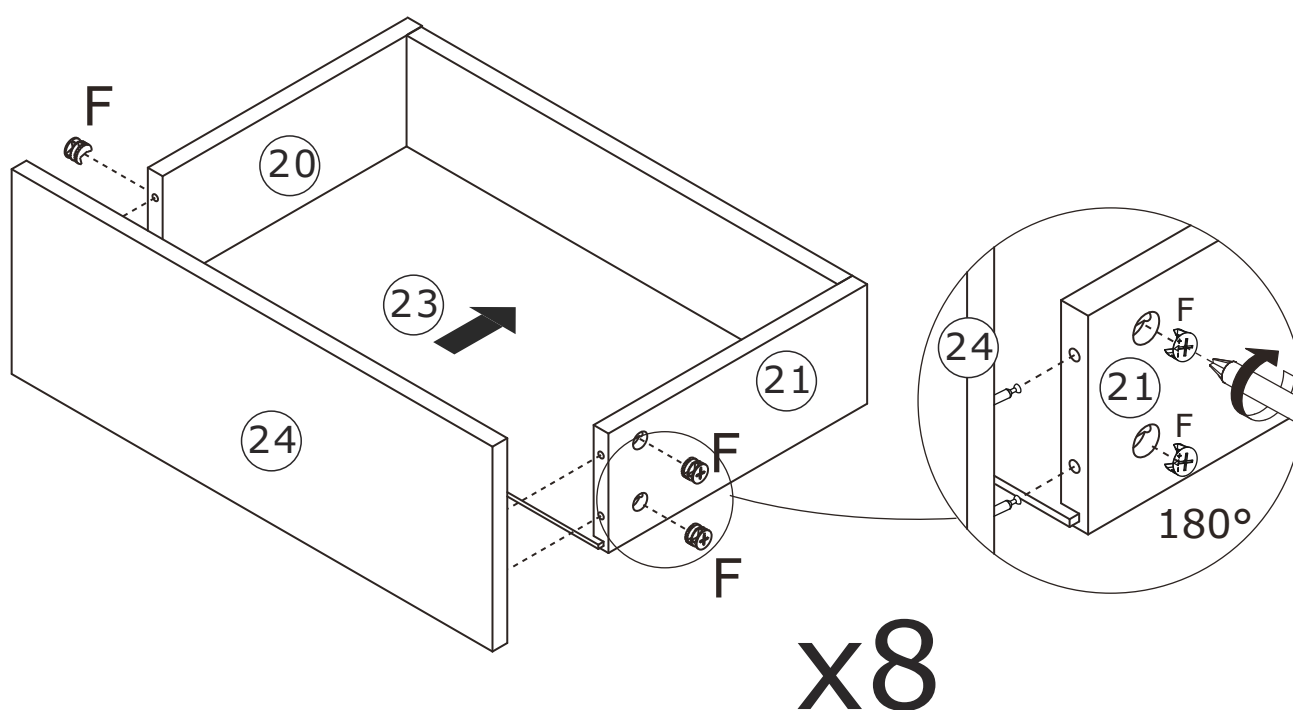
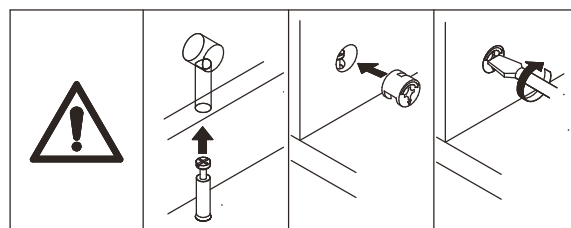
F x 32



Ø 15 x 9.5 mm



Slide plate 23 into available slot at first.
Attach plate 24 to plate 20 and 21,
insert cam lock(F) into plate 20,21
and turn clockwise to tighten as shown.

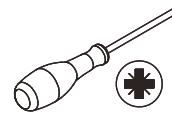
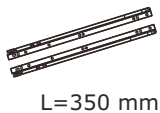


4

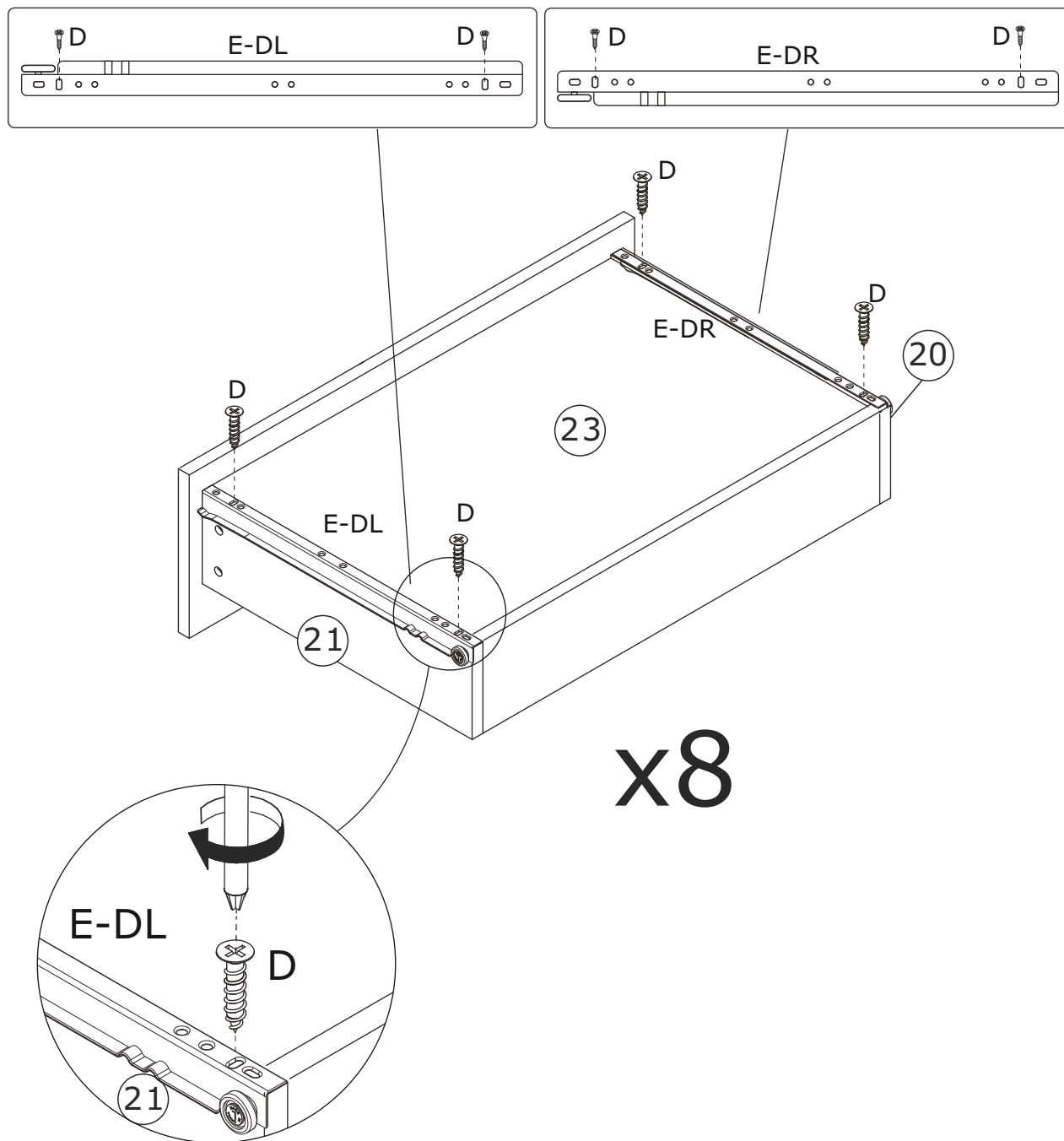
D x 32



E x 8



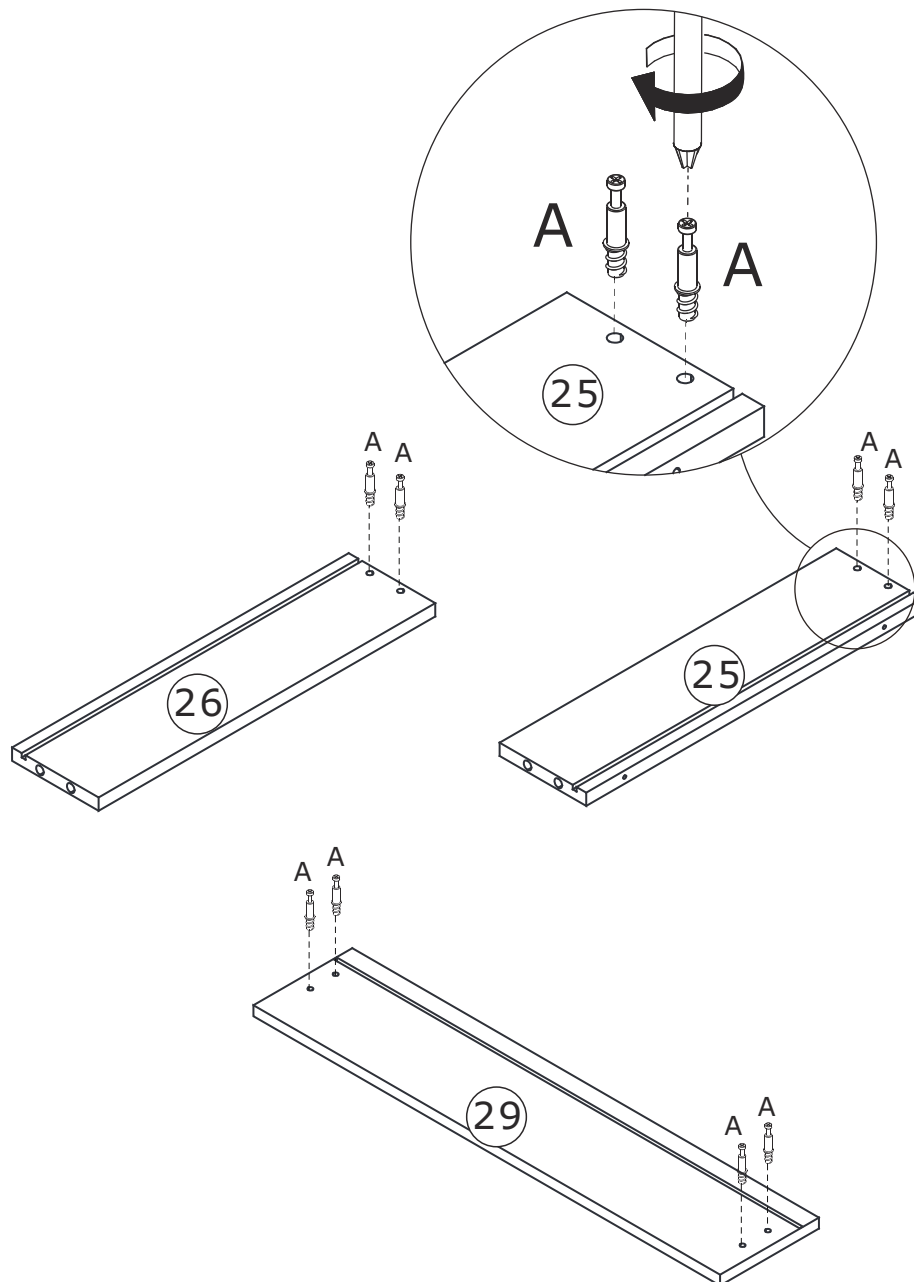
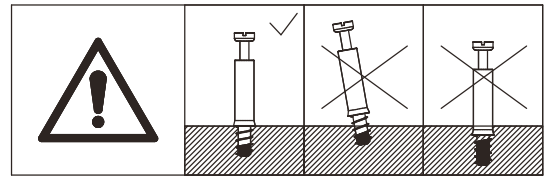
Fix runner(E-DL) and (E-DR) to plate 21 and 20 respectively using screw(D) as shown.



5



Insert quickfit screw(A) into corresponding holes in plate 25,26 and 29 with a screwdriver as shown.



6

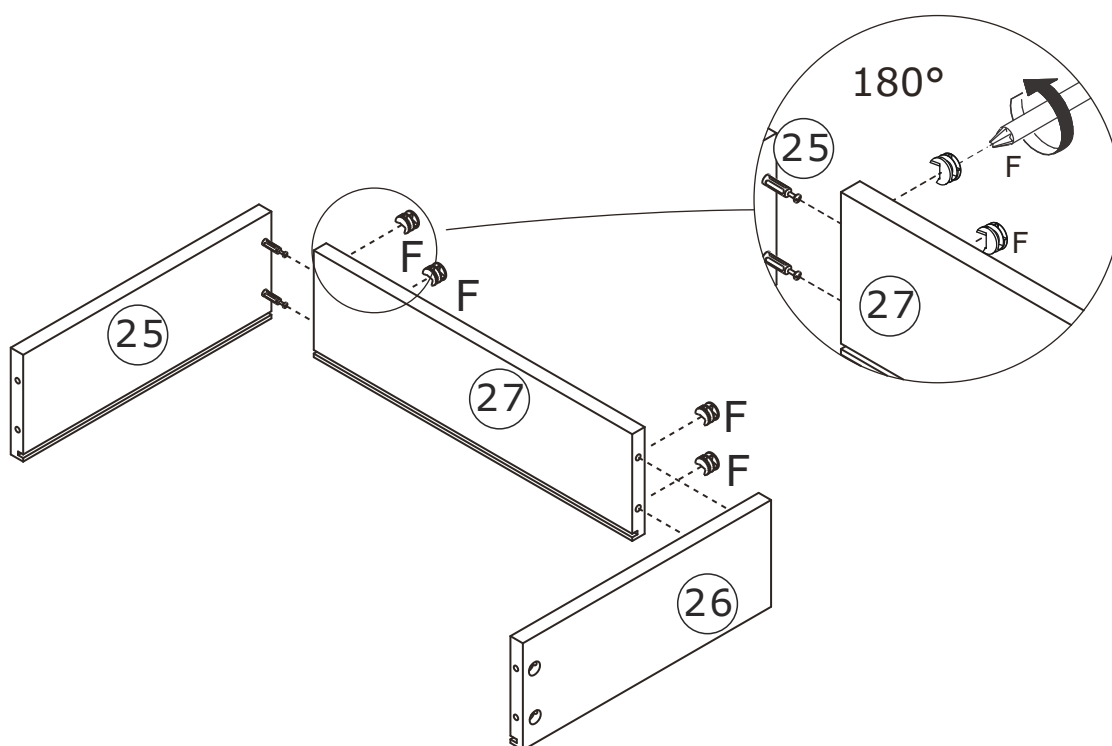
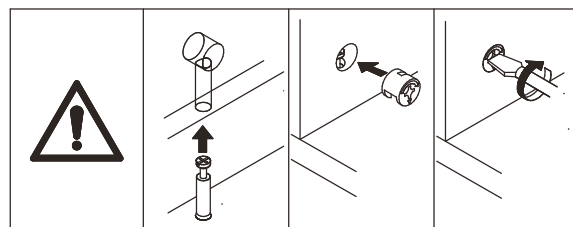
F x 4



Ø 15 x 9.5 mm



Attach plate 25 and 26 to plate 27,
insert cam lock(F) into plate 27 and
turn clockwise to tighten as shown.

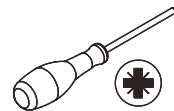


7

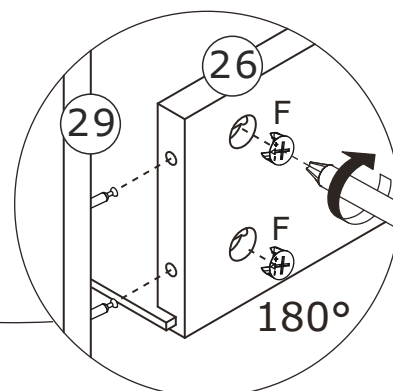
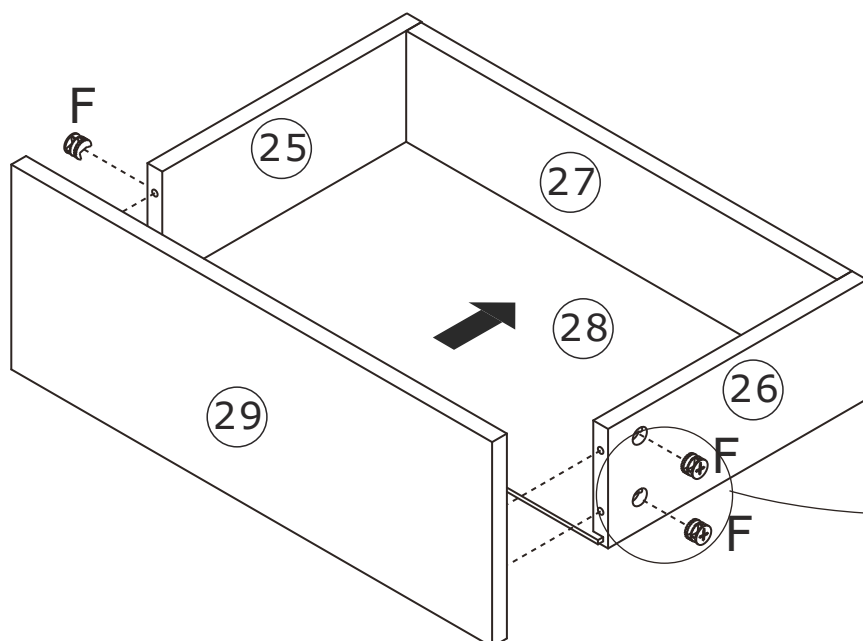
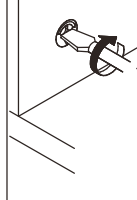
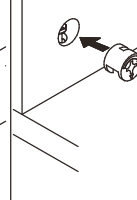
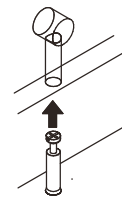
F x 4



Ø 15 x 9.5 mm



Slide plate 28 into available slot at first.
Attach plate 29 to plate 25 and 26,
insert cam lock(F) into plate 25,26
and turn clockwise to tighten as shown.

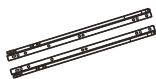


8

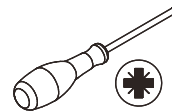
D x 4

 $\varnothing 3 \times 12 \text{ mm}$

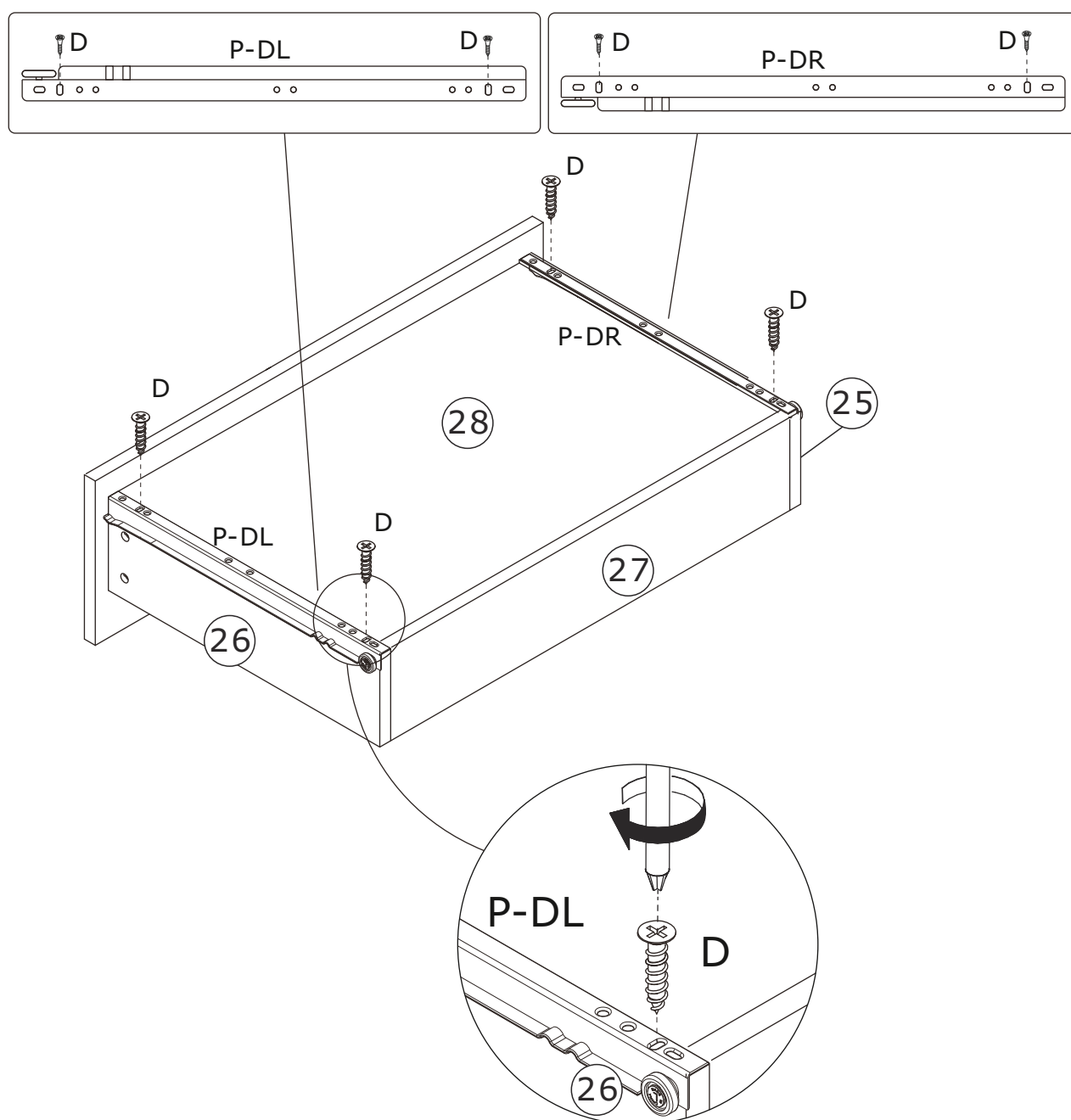
P x 1



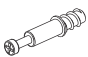
L=400 mm

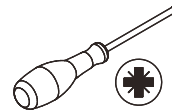


Fix runner(P-DL) and (P-DR) to plate 26 and 25 respectively using screw(D) as shown.

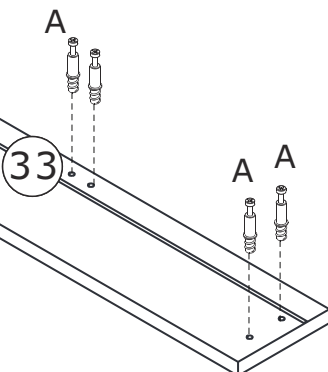
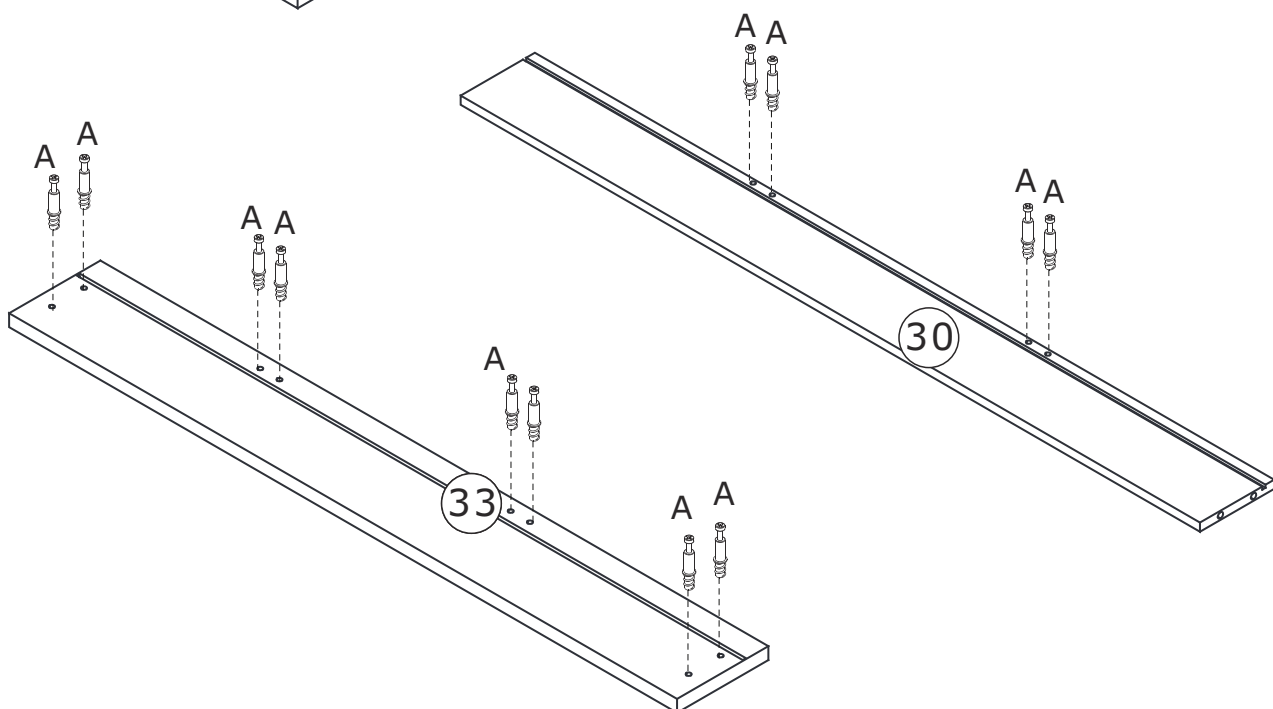
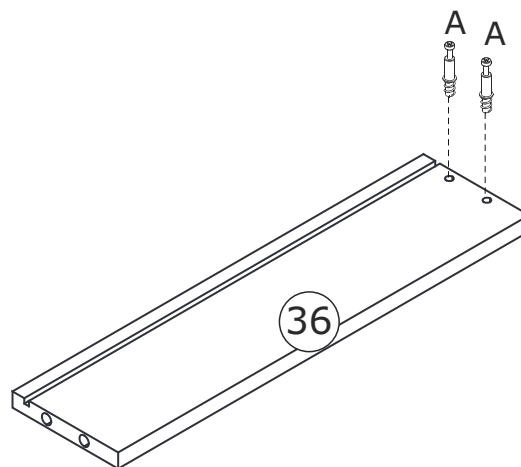
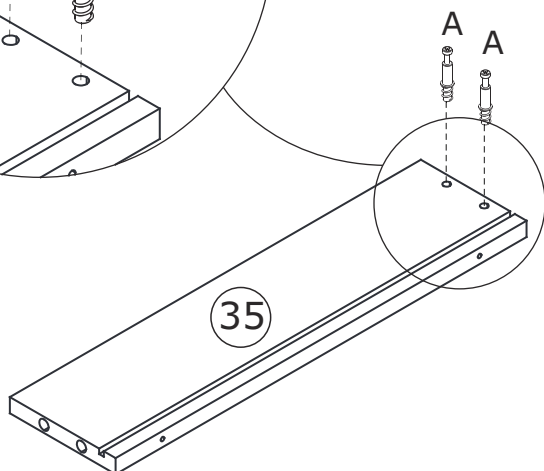
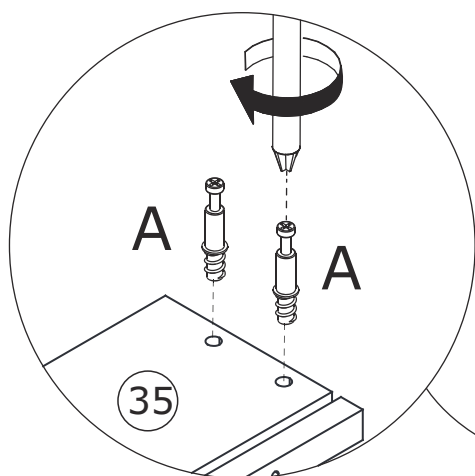
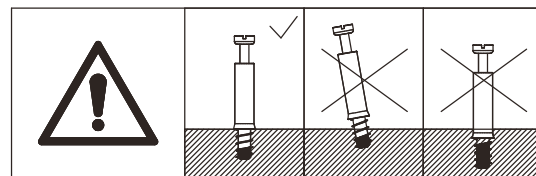


9

A x 16

 Ø 5 x 31 mm



Insert quickfit screw(A) into corresponding holes in plate 35,36,30 and 33 with a screwdriver as shown.

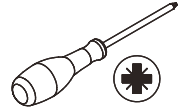


10

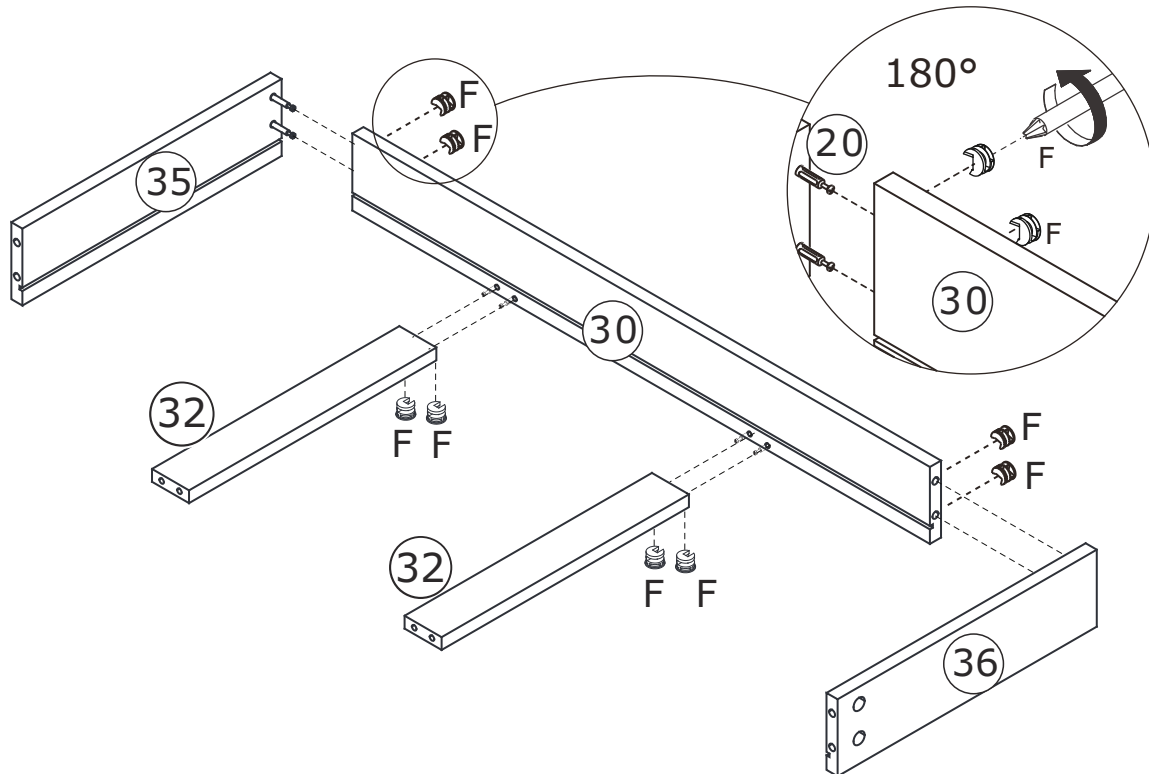
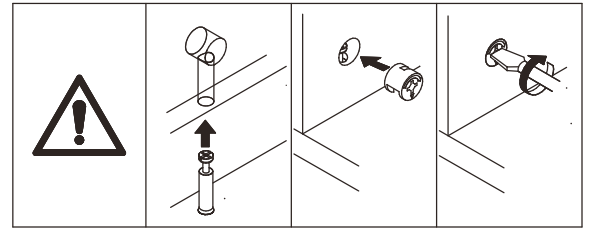
F x 8



Ø 15 x 9.5 mm



Attach plate 35,32 and 36 to plate 30,
insert cam lock(F) into plate 30,32
and turn clockwise to tighten as shown.

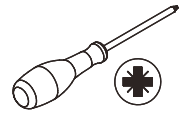


11

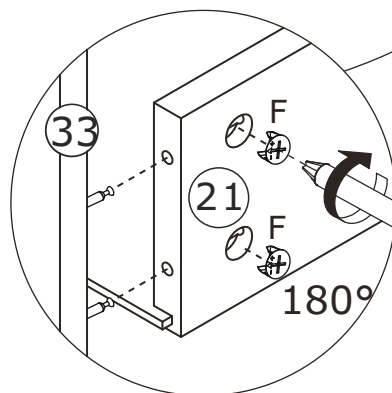
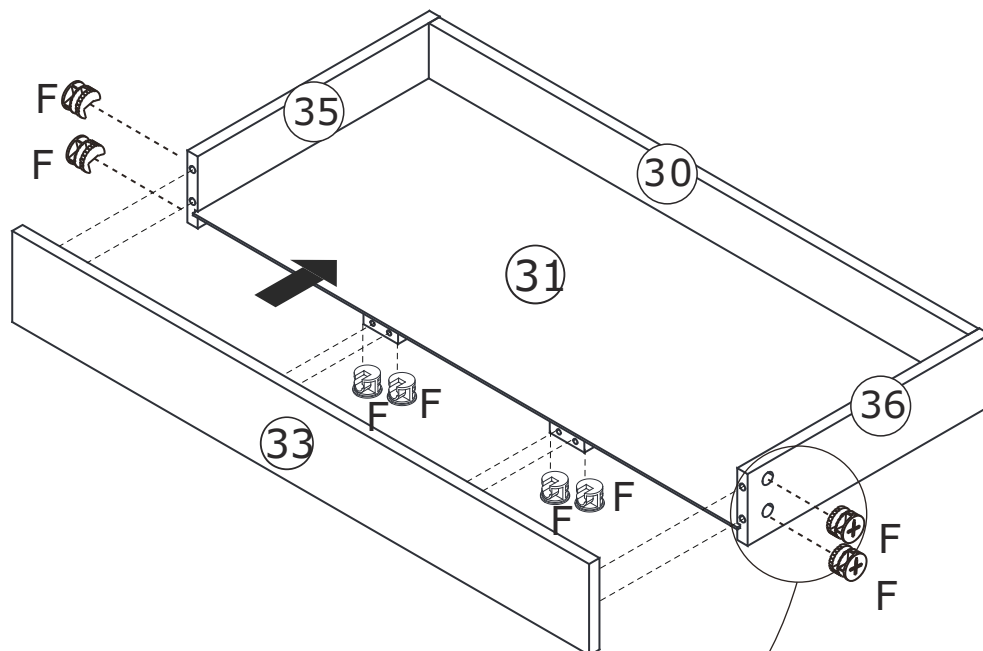
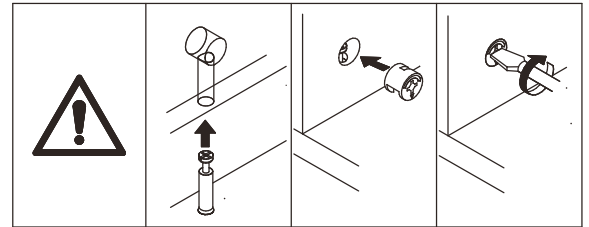
F x 8



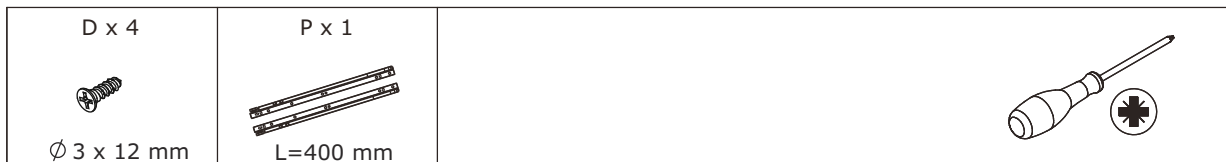
Ø 15 x 9.5 mm



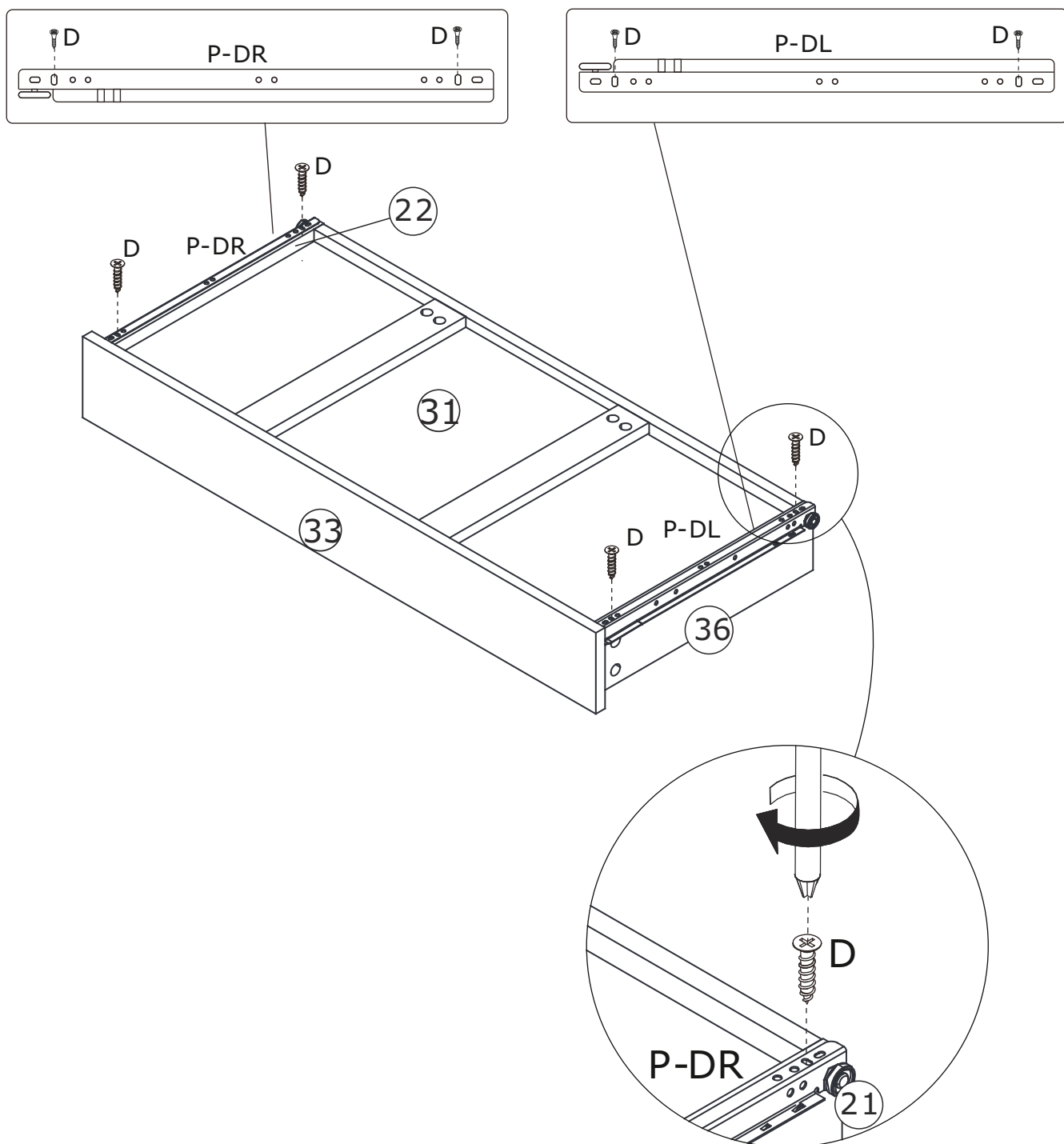
Slide plate 31 into available slot at first.
Attach plate 33 to plate 35,32 and 36,
insert cam lock(F) into plate 35,32,36
and turn clockwise to tighten as shown.



12



Fix runner(P-DL) and (P-DR) to plate 35 and 36 respectively using screw(D) as shown.



13

A x 3



Ø 5 x 31 mm

B x 5



Ø 15 x 11 mm

Cx2

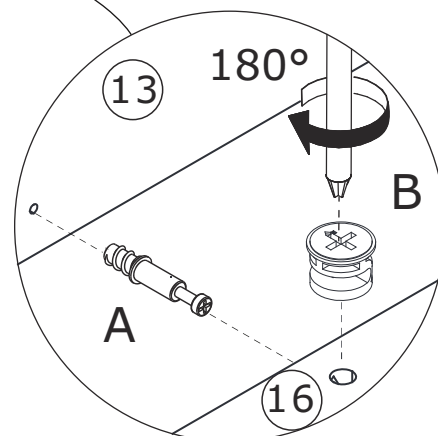
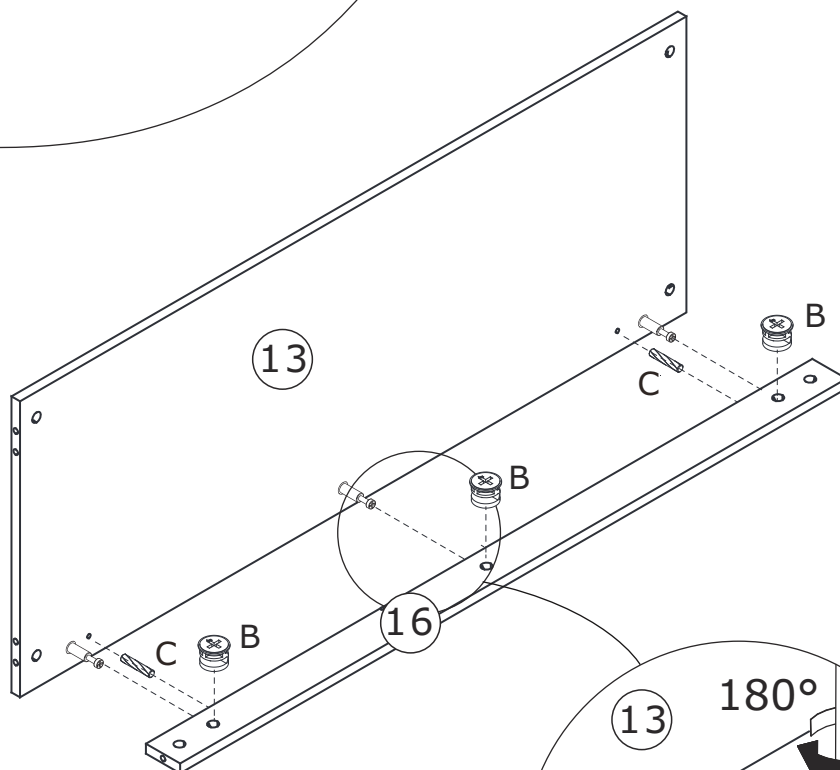
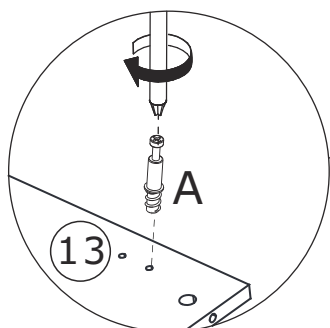
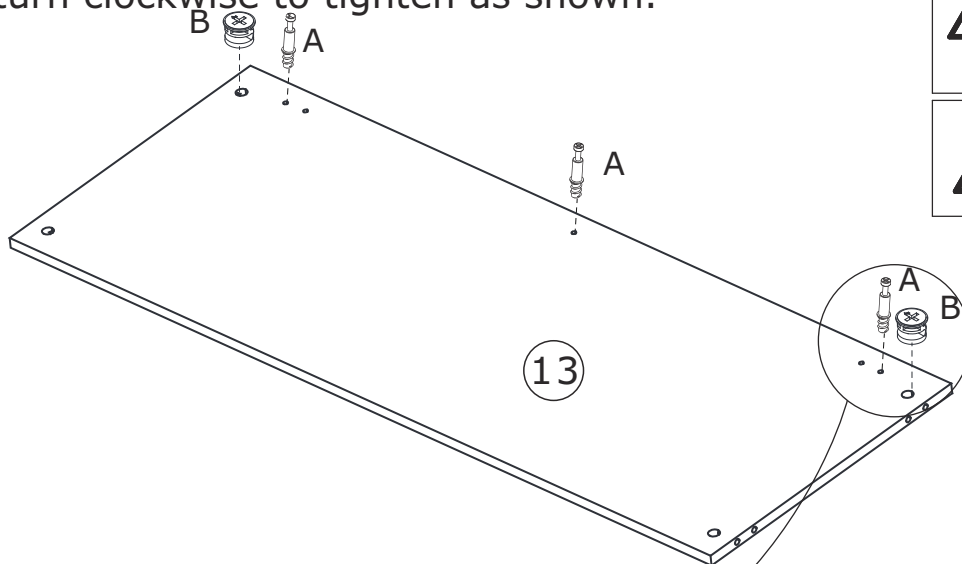
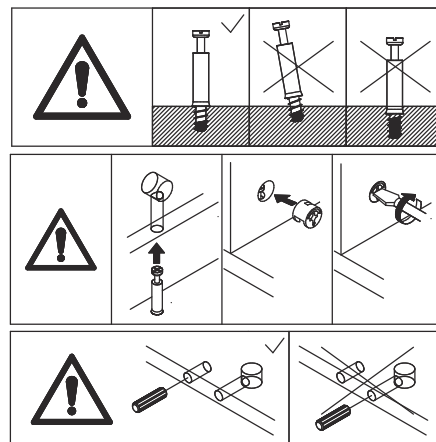


Ø 8x 30 mm



Insert quickfit screw(A) into corresponding holes in plate 13 at first.

Attach plate 16 to plate 13 with wooden dowel(C), insert cam lock(B) into plate 16 and turn clockwise to tighten as shown.



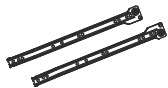
14

D x 8



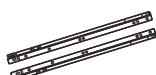
Ø 3 x 12 mm

E x 3

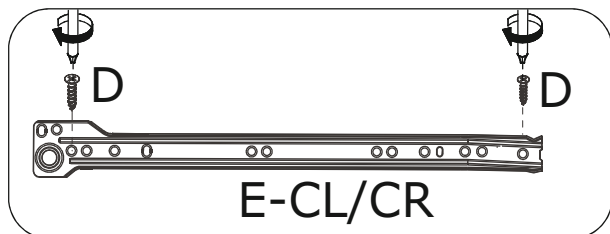
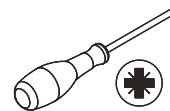


L=350 mm

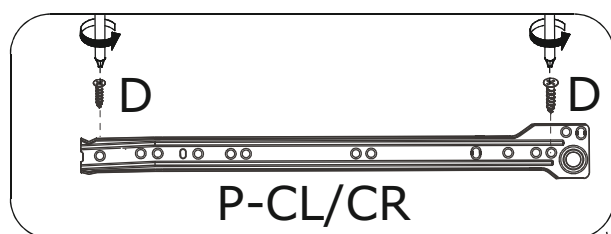
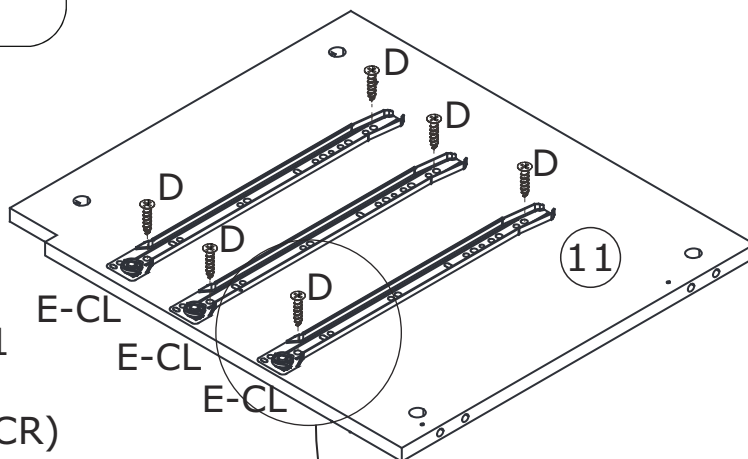
P x 1



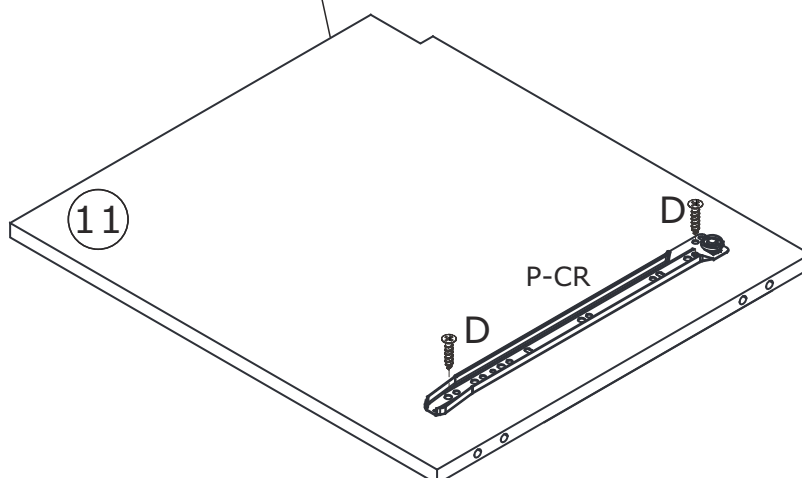
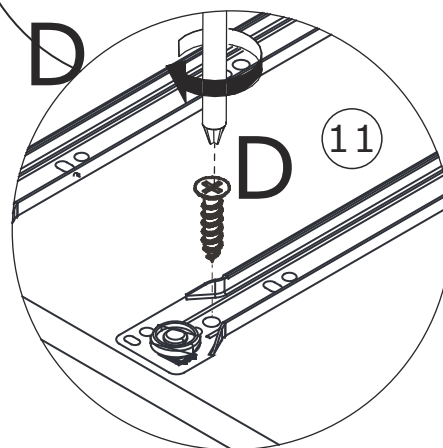
L=400 mm



Fix slide rail(E-CL) to plate 11 using screw(D) as shown. Flip the plate, fix slide rail(P-CR) using screw(D) as shown.



180°



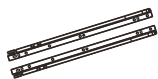
15

D x 14

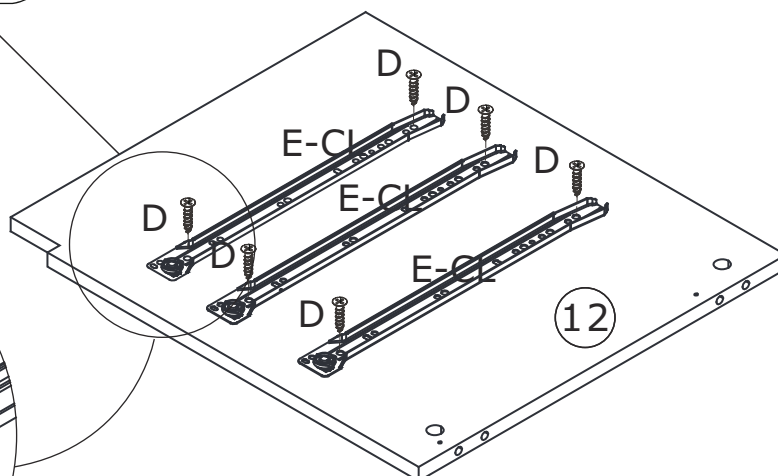
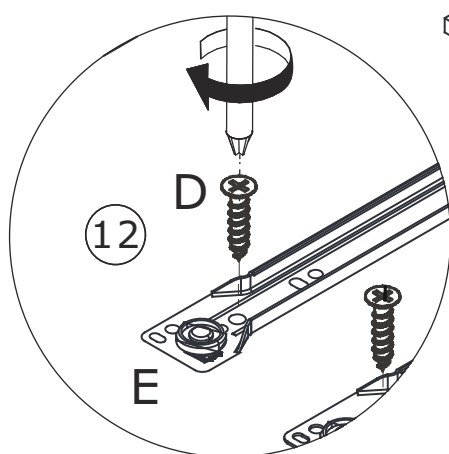
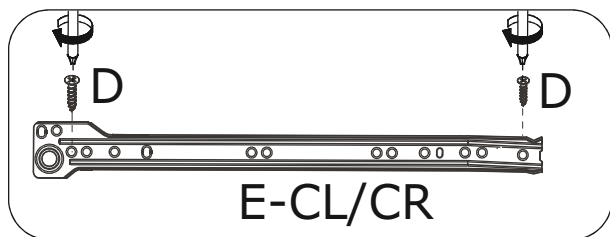


Ø 3 x 12 mm

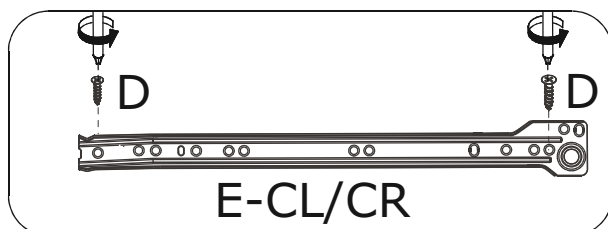
E x 7



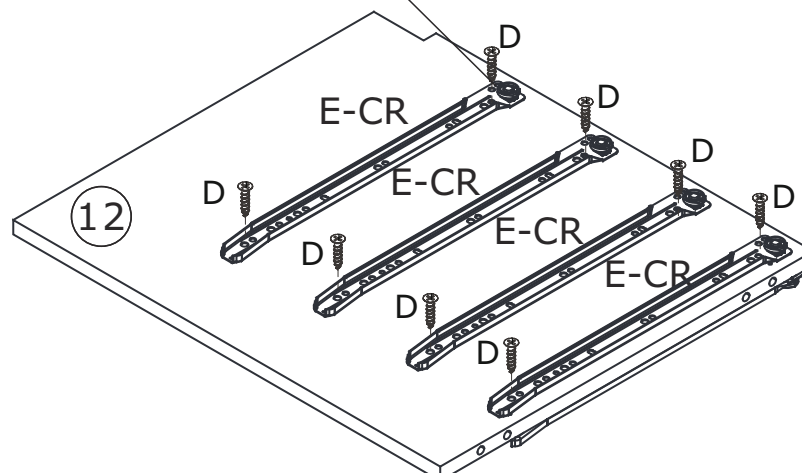
L=350 mm



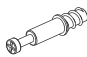


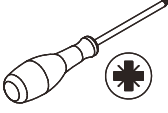
180



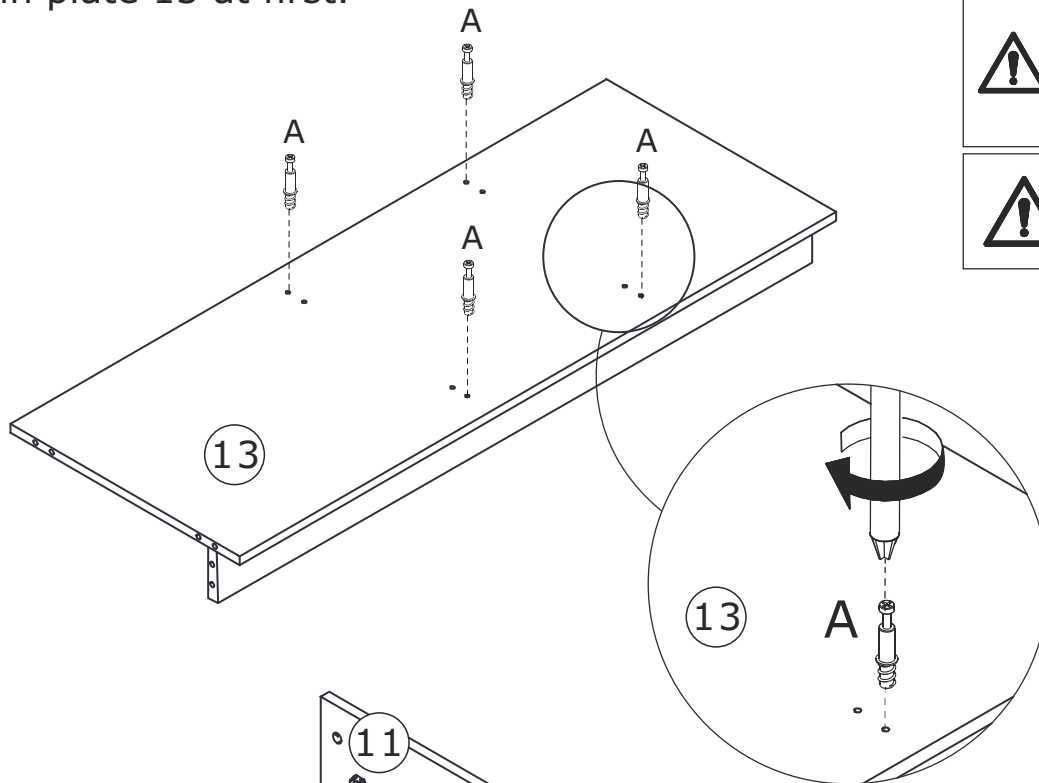
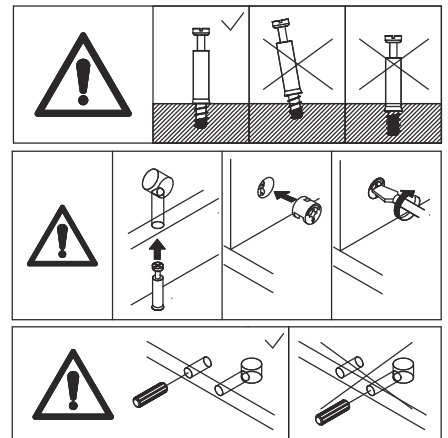
Fix slide rail(E-CL) to plate 12 using screw(D) as shown.
Flip the plate, fix slide rail(E-CR) using screw(D) as shown.



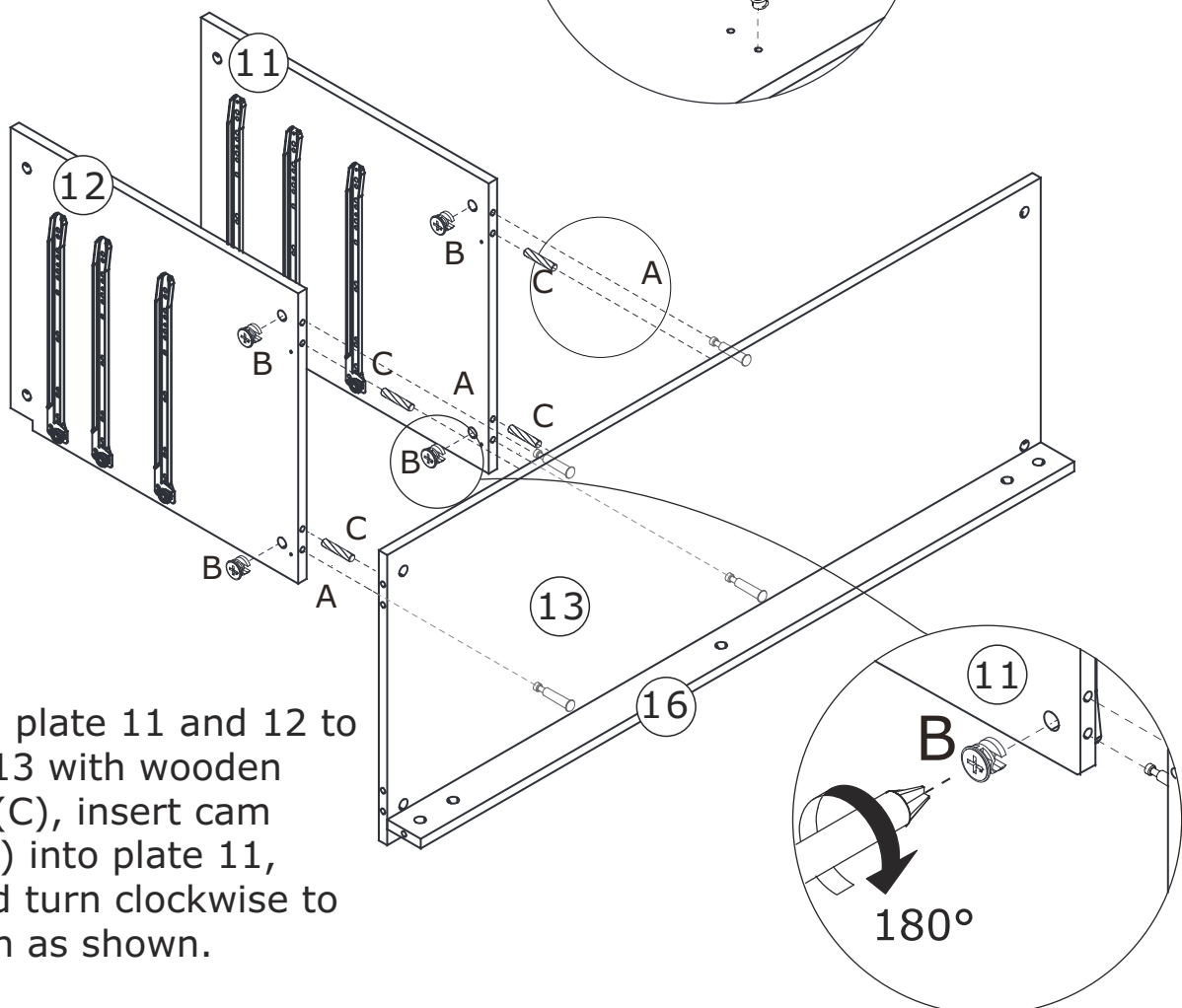
16

<p>A x 4</p>  <p>Ø 5 x 31 mm</p>	<p>B x 4</p>  <p>Ø 15 x 11 mm</p>	<p>C x 4</p> 	
---	--	--	---

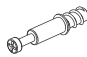
Insert quickfit screw(A) into corresponding holes in plate 13 at first.

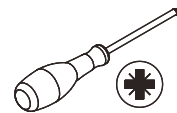


Attach plate 11 and 12 to plate 13 with wooden dowel(C), insert cam lock(B) into plate 11, 12 and turn clockwise to tighten as shown.

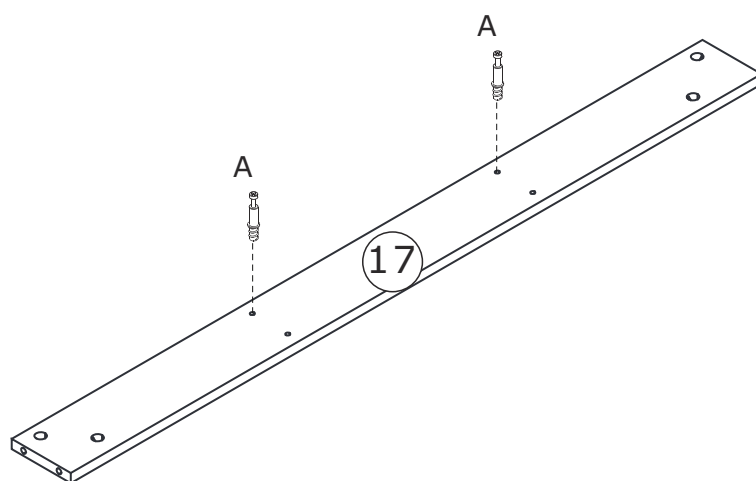
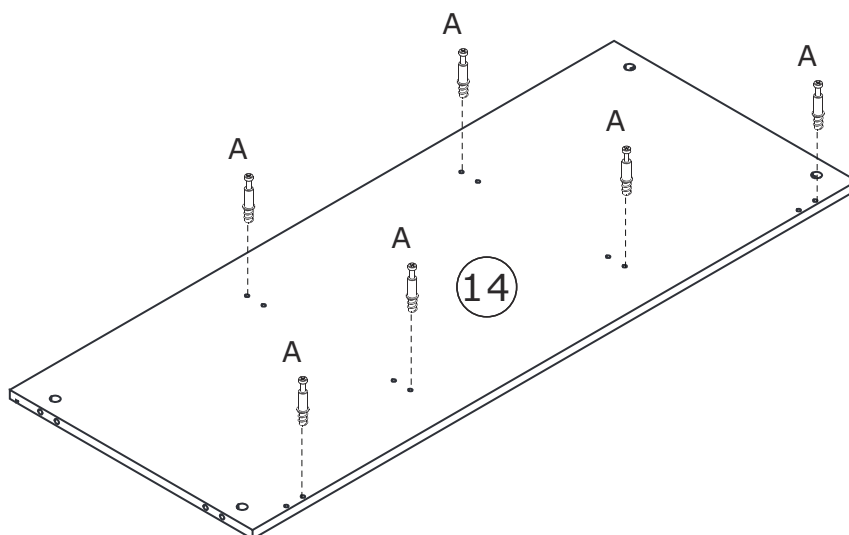
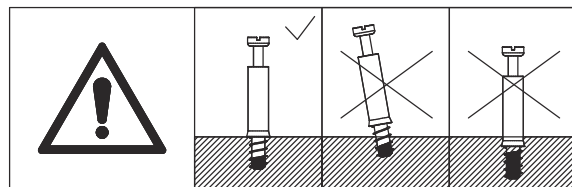


17

A x 8

 Ø 5 x 31 mm



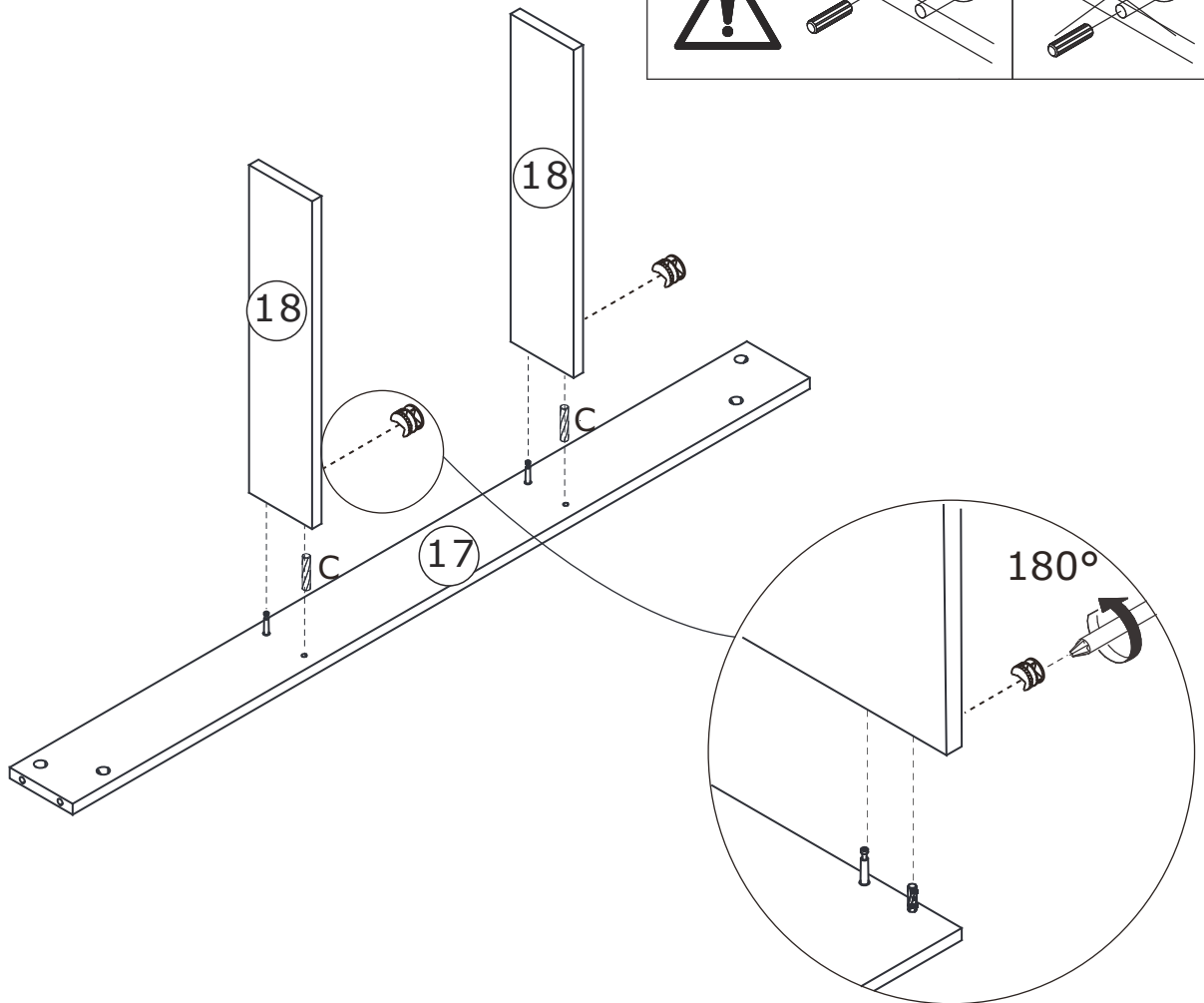
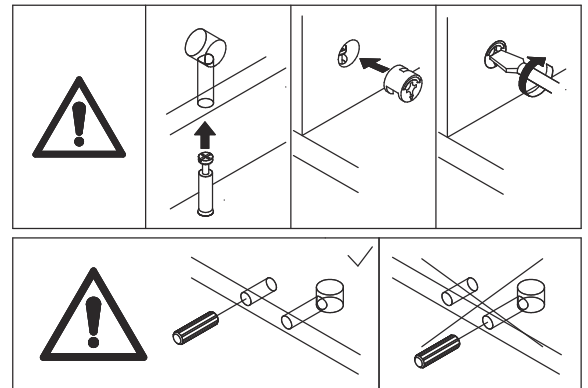
Insert quickfit screw(A) into corresponding holes in plate 14 and 17 as shown.



18

<p>B x 2</p>  <p>Ø 15 x 11 mm</p>	<p>C x 2</p> 	
--	--	---

Attach plate 18 to plate 17 with wooden dowel(C), insert cam lock(B) into plate 18 and turn clockwise to tighten as shown.



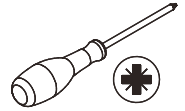
19

B x 6

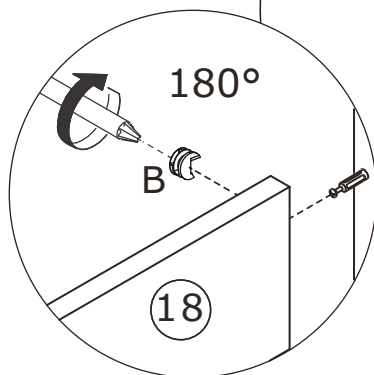
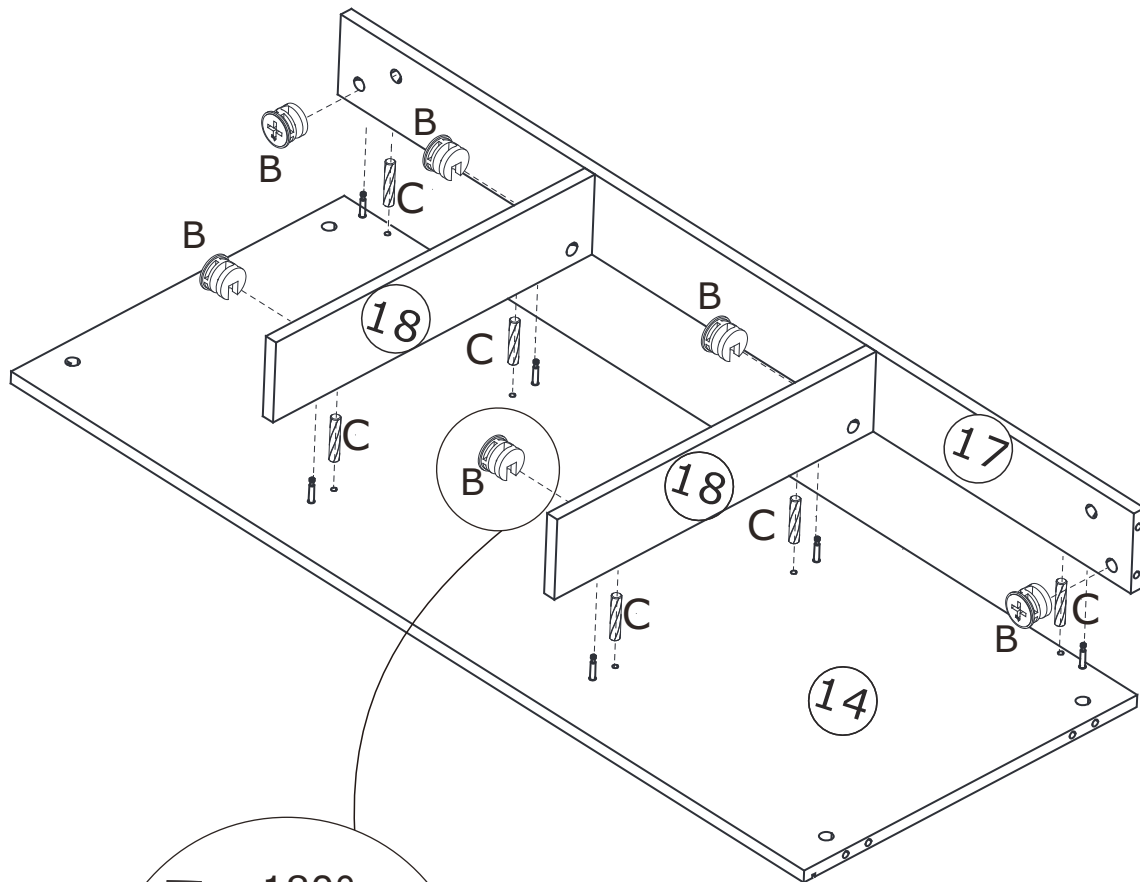
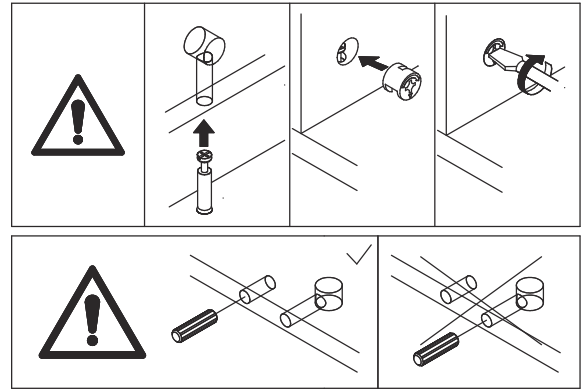


Ø 15 x 11 mm

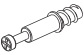


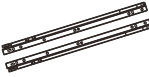
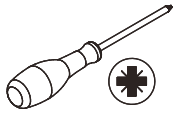
C x 6

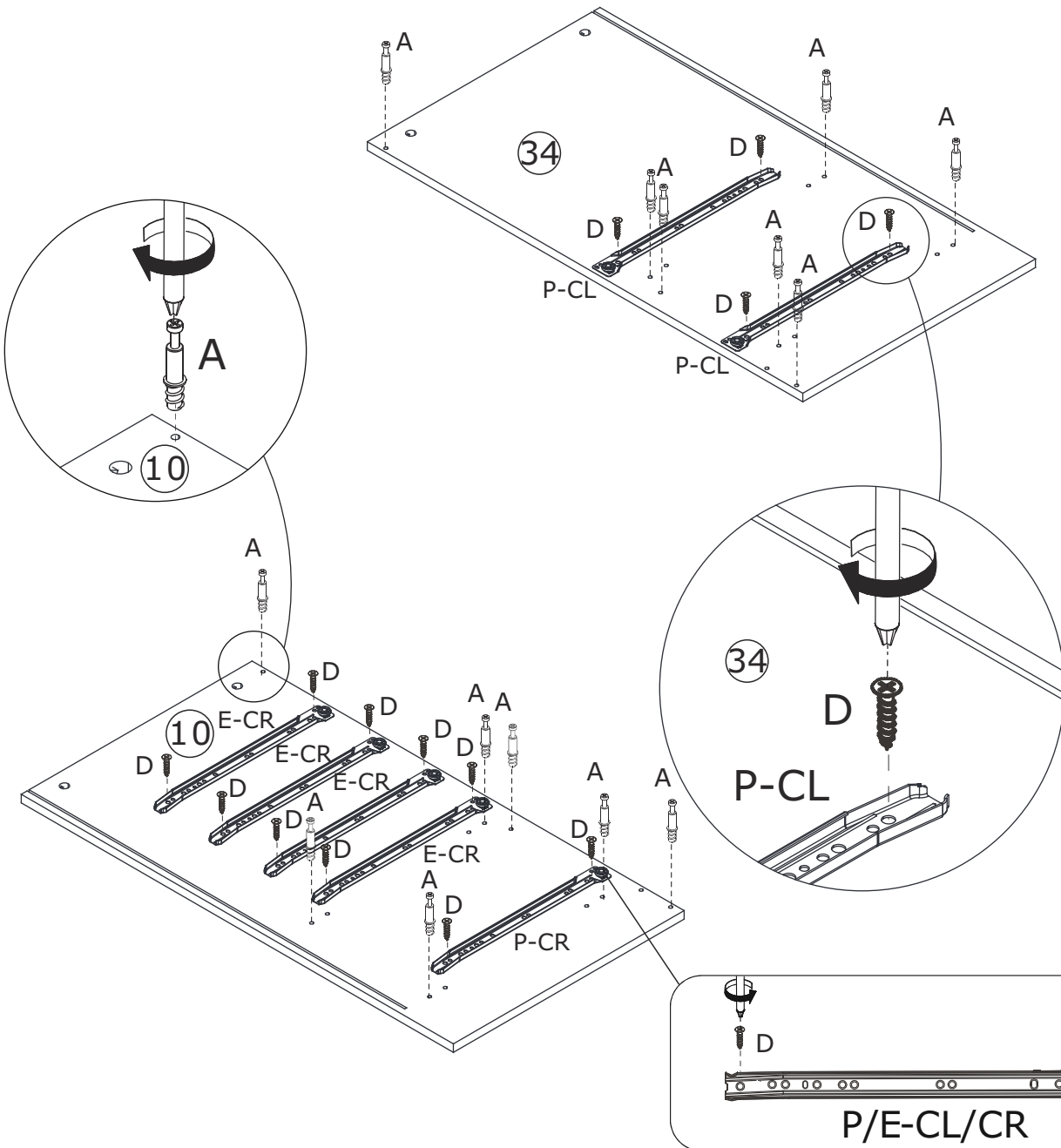
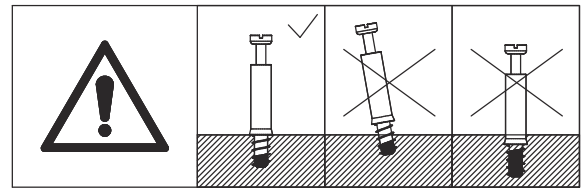
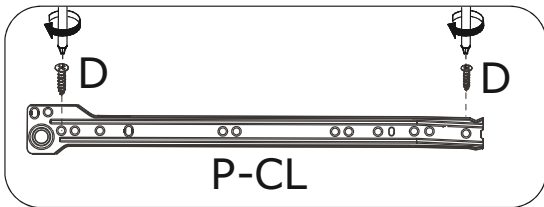


Attach plate 14 to plate 18 and 17 with wooden dowel(C), insert cam lock(B) into plate 17,18 and turn clockwise to tighten as shown.



20

<p>A x 14</p>  <p>Ø 5 x 31 mm</p>	<p>D x 14</p>  <p>Ø 3 x 12 mm</p>	<p>E x 4</p>  <p>L=350 mm</p>	<p>P x 2</p>  <p>L=400 mm</p>	
--	--	--	---	---



Fix slide rail(P-CL) to plate 34 using screw(D) as shown.
 Fix slide rail(E-CR) and (P-CR) to plate 10 using screw(D)
 as shown.
 Insert quickfit screw(A) into corresponding holes in plate 10
 and 34 as shown.

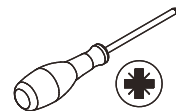
21

B x 6

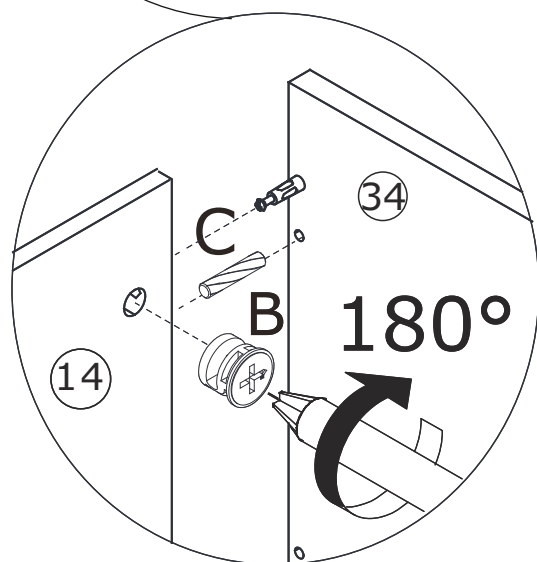
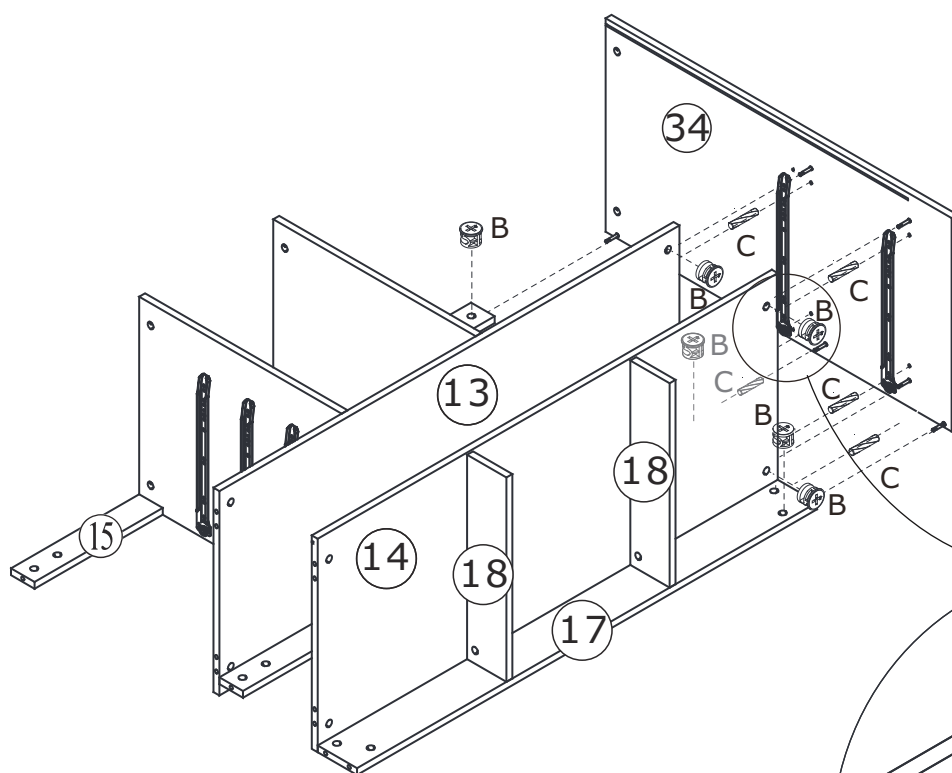
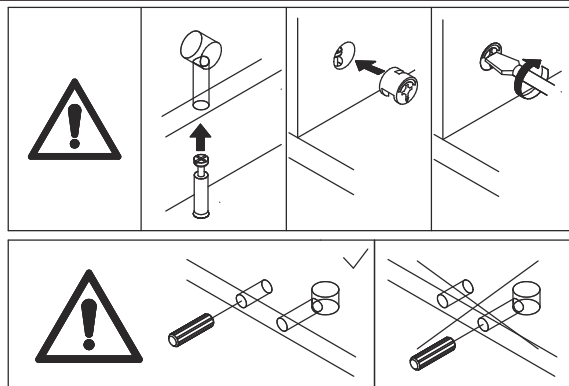


Ø 15 x 11 mm

C x 5



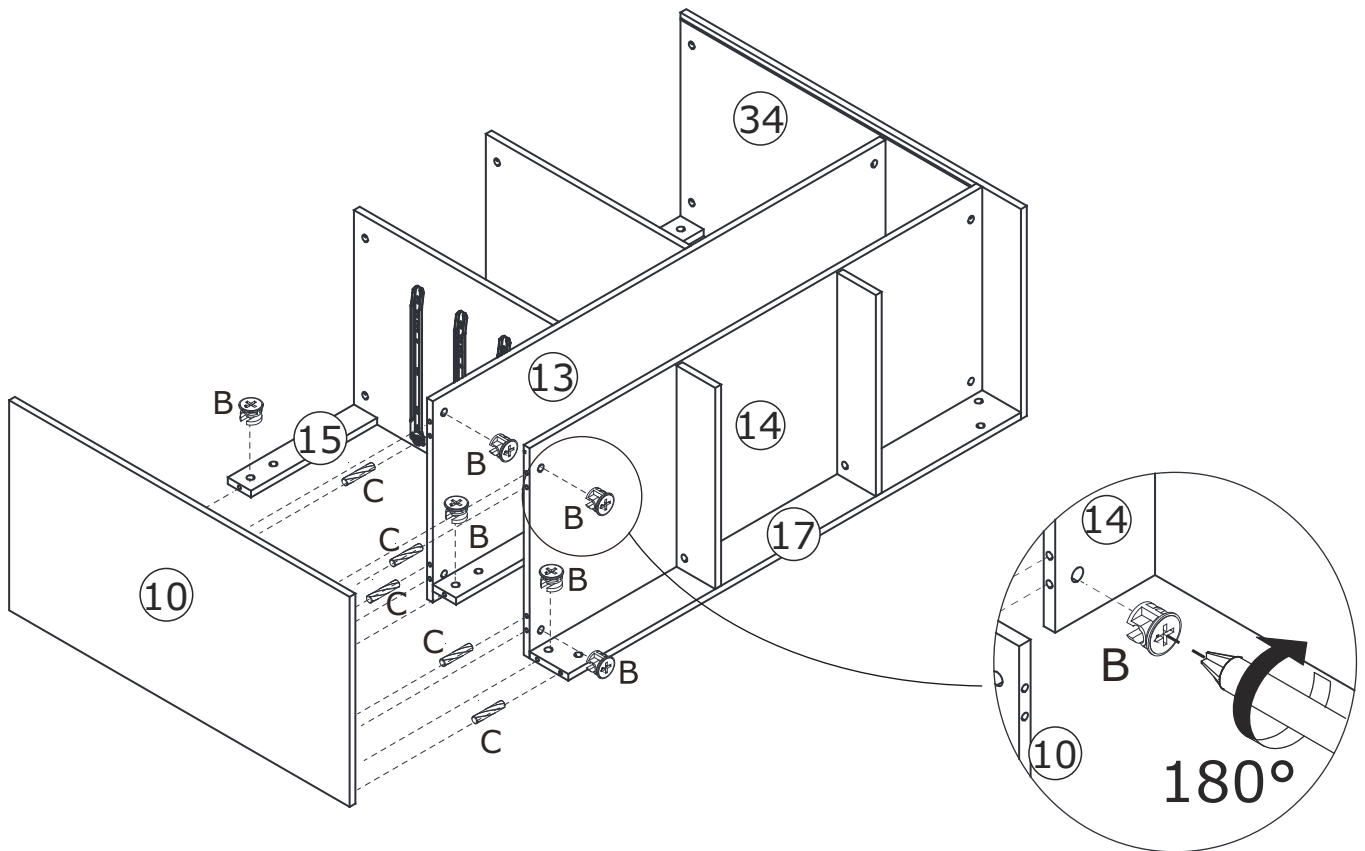
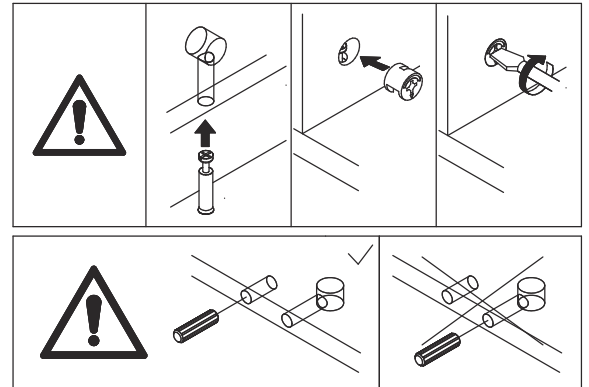
Attach plate 34 to plate 15,13,14 and 17 with wooden dowel(C), insert cam lock(B) into plate 13,14,15,17 and turn clockwise to tighten as shown.



22



Attach plate 10 to another side of plate 15, 13, 14 and 17 with wooden dowel(C), insert cam lock(B) into plate 13, 14, 15, 17 and turn clockwise to tighten as shown.



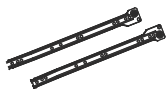
23

D x 4



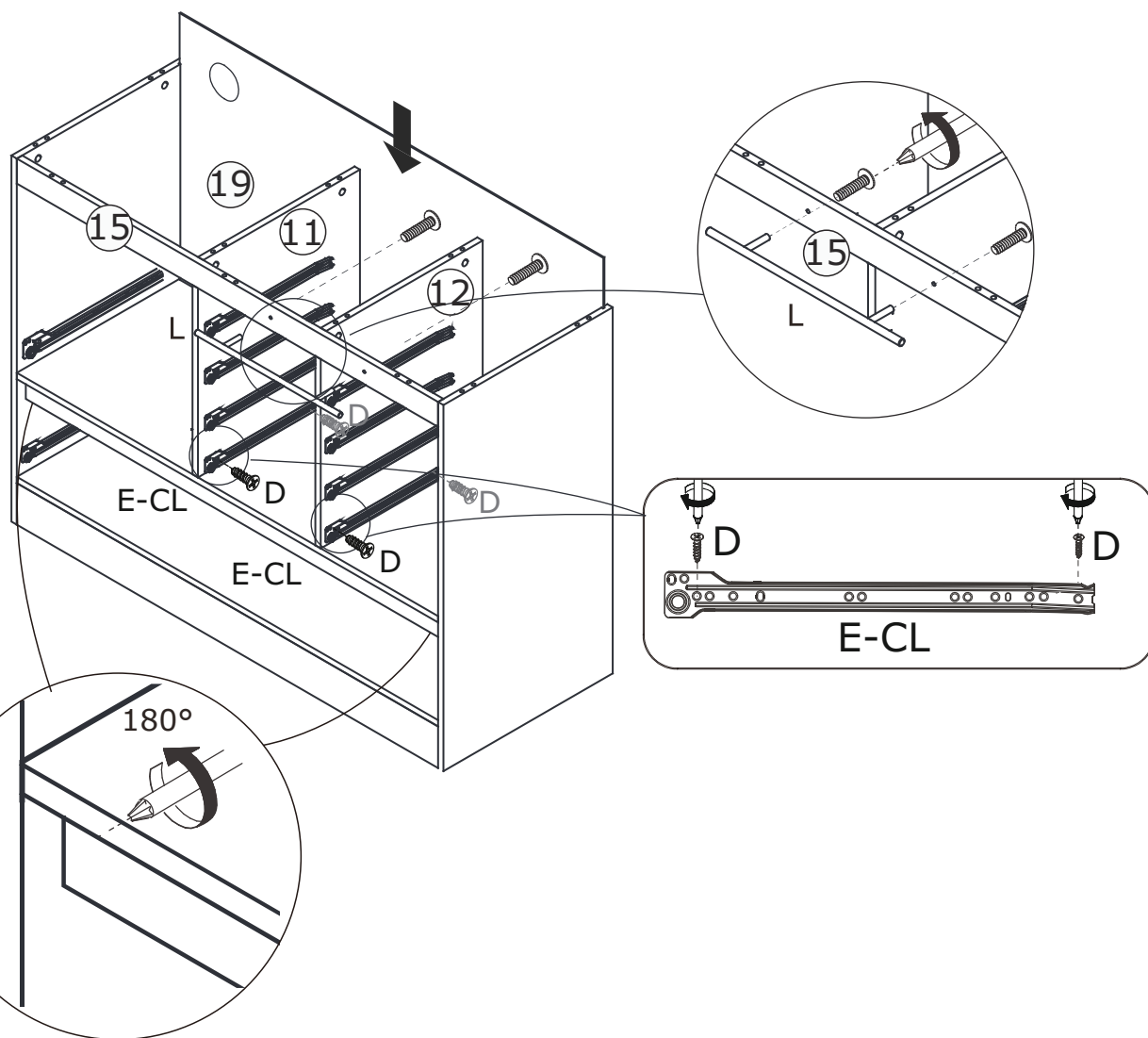
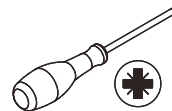
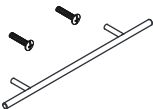
Ø 3 x 12 mm

E x 2



L=350 mm

L x 1

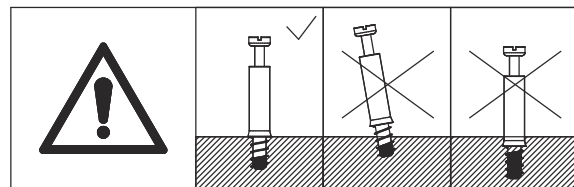


Fix part(L) to plate 15 as shown.

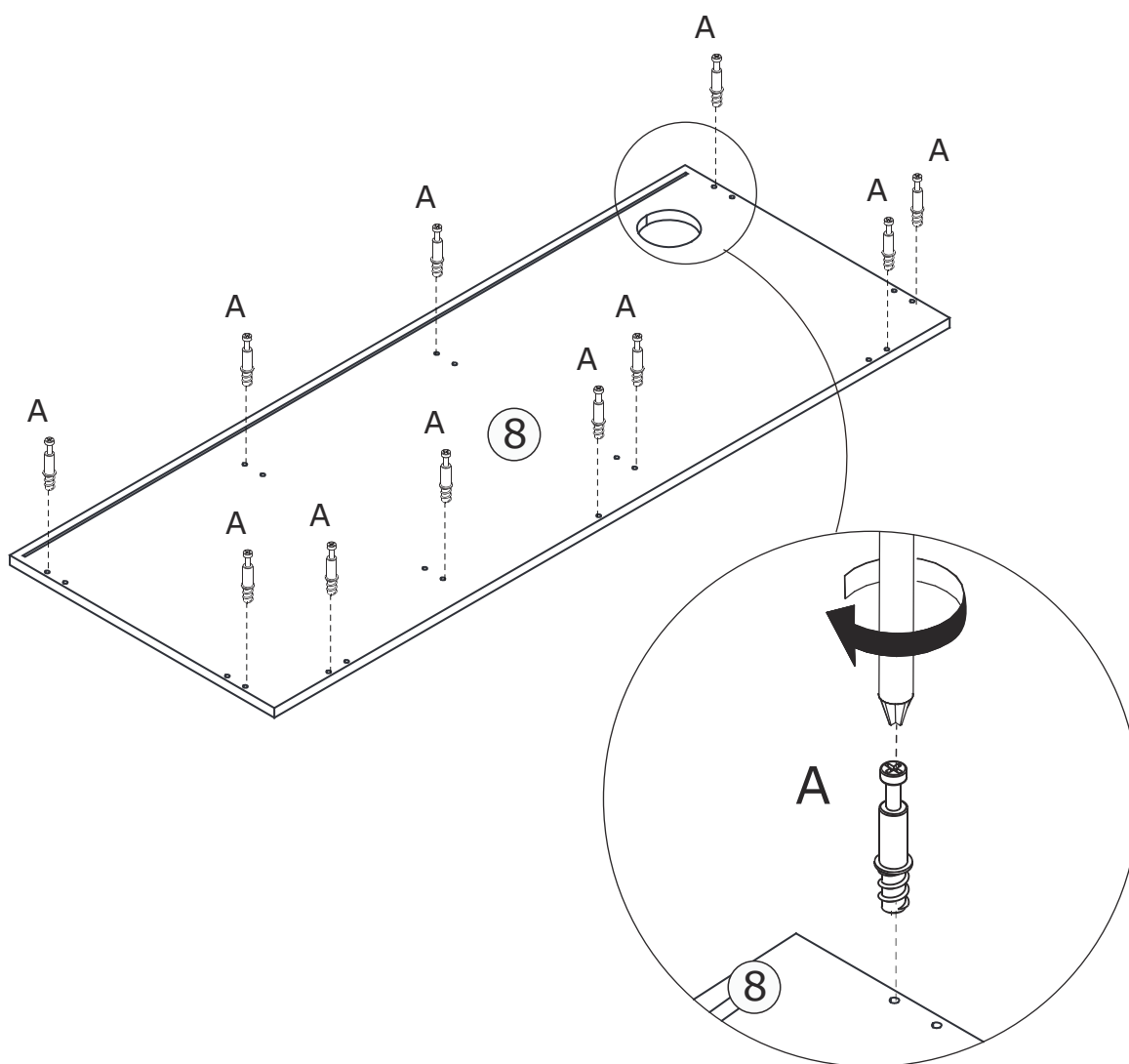
Slide plate 19 along grooves in plate 10 and 34 as shown.

Fix slide rail(E-CL) to the bottom of plate 11 and 12 respectively using screw(D) as shown.

24



Insert quickfit screw(A) into corresponding holes in plate 8 as shown.



25

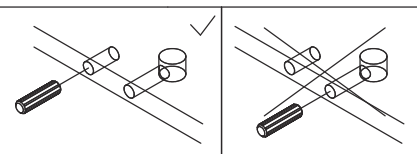
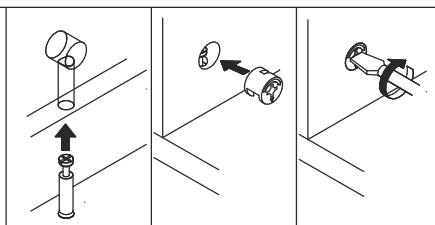
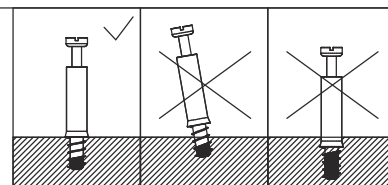
A x 4



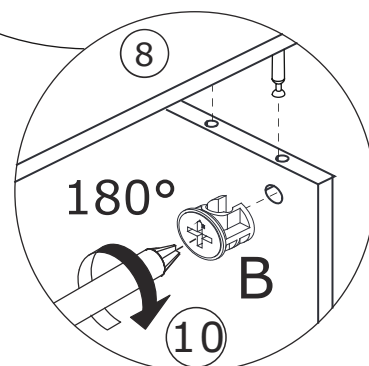
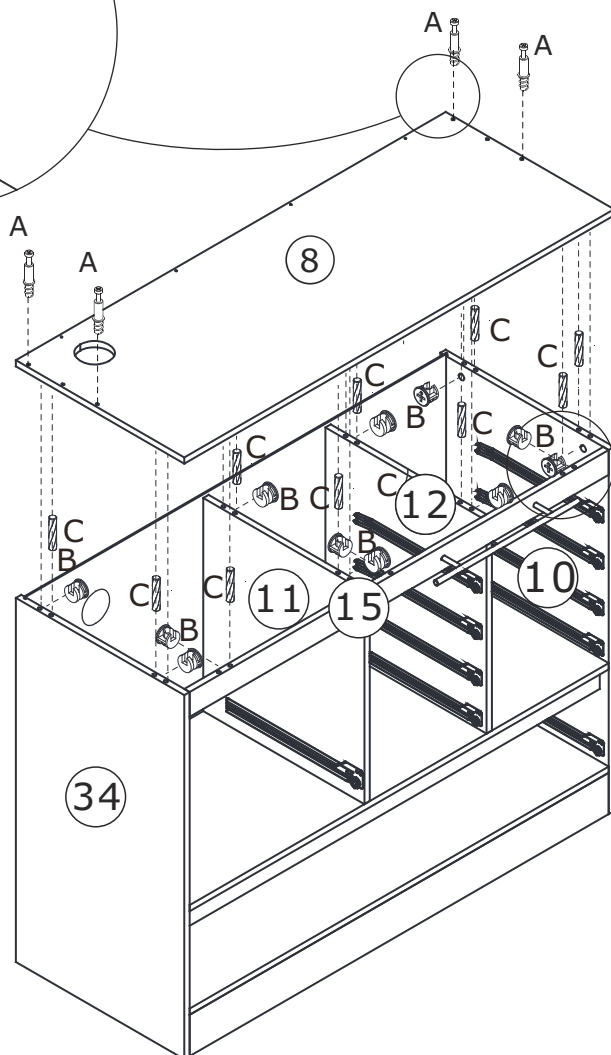
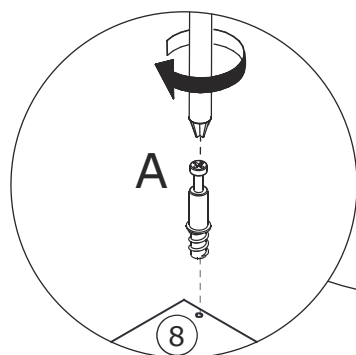
B x 11



C x 10



Cover plate 8 to the top of the unit with wooden dowel(C), insert cam lock(B) into plate 34,11,12,10,15 and turn clockwise to tighten as shown. Insert quickfit screw(A) into corresponding holes in top of plate 8 as shown.

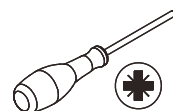


26

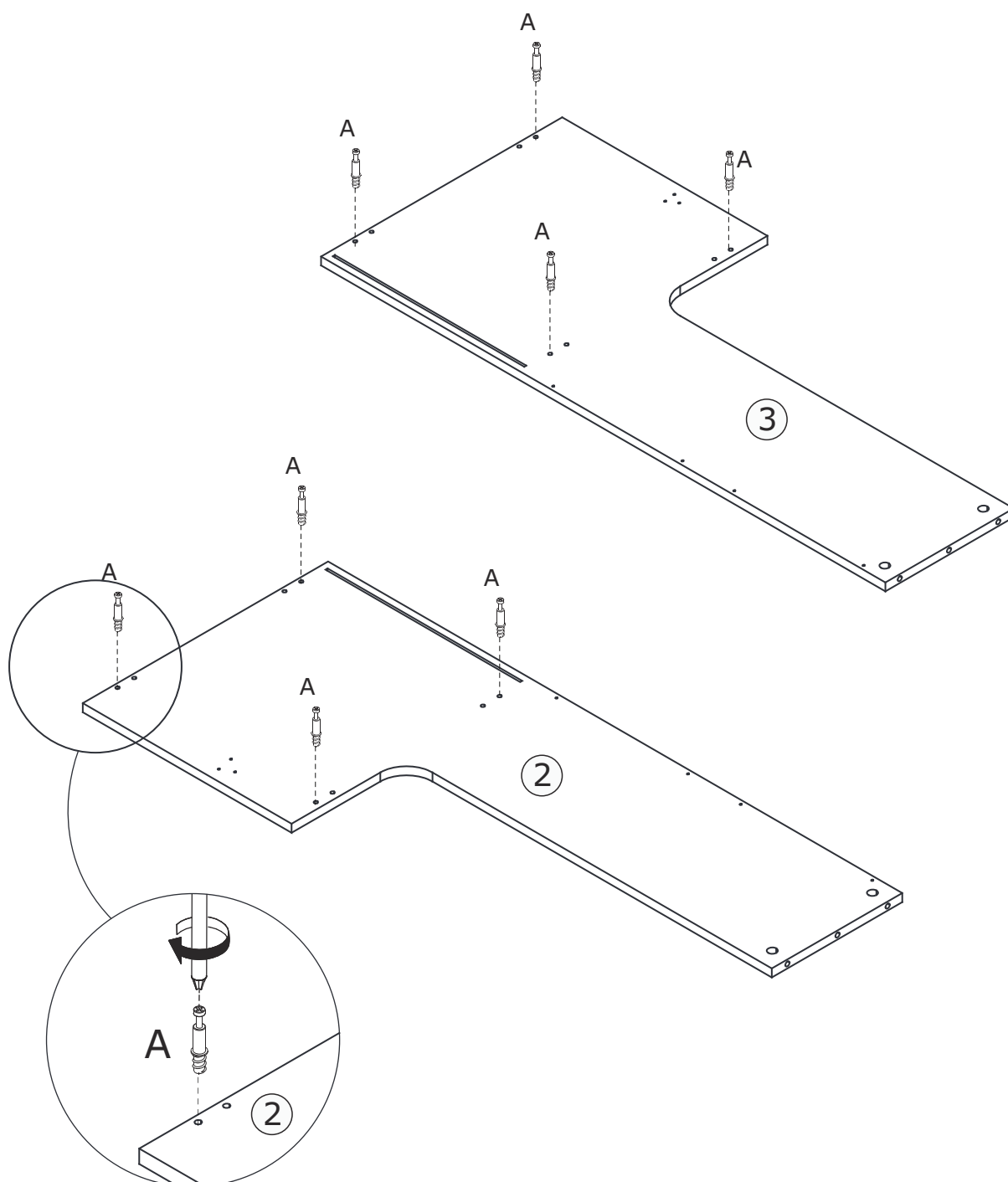
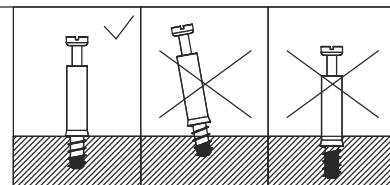
A x 8



Ø 5 x 31 mm

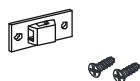


Insert quickfit screw(A) into corresponding holes in plate 2 and 3 as shown.

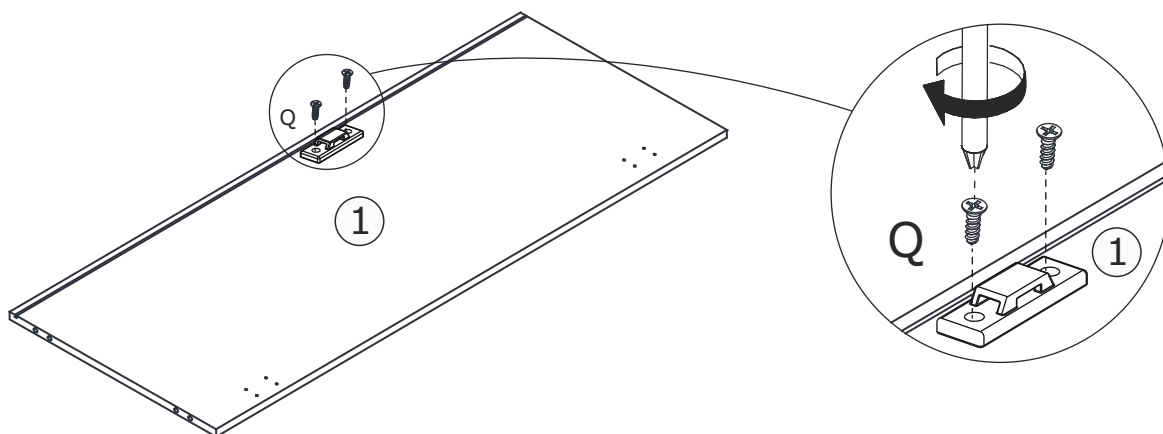


27

Q x 1



Fix part(Q) to plate 1 as shown.



28

B x 4

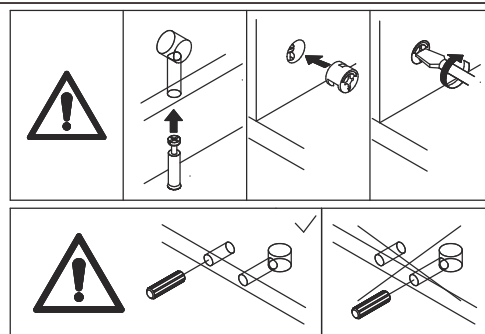
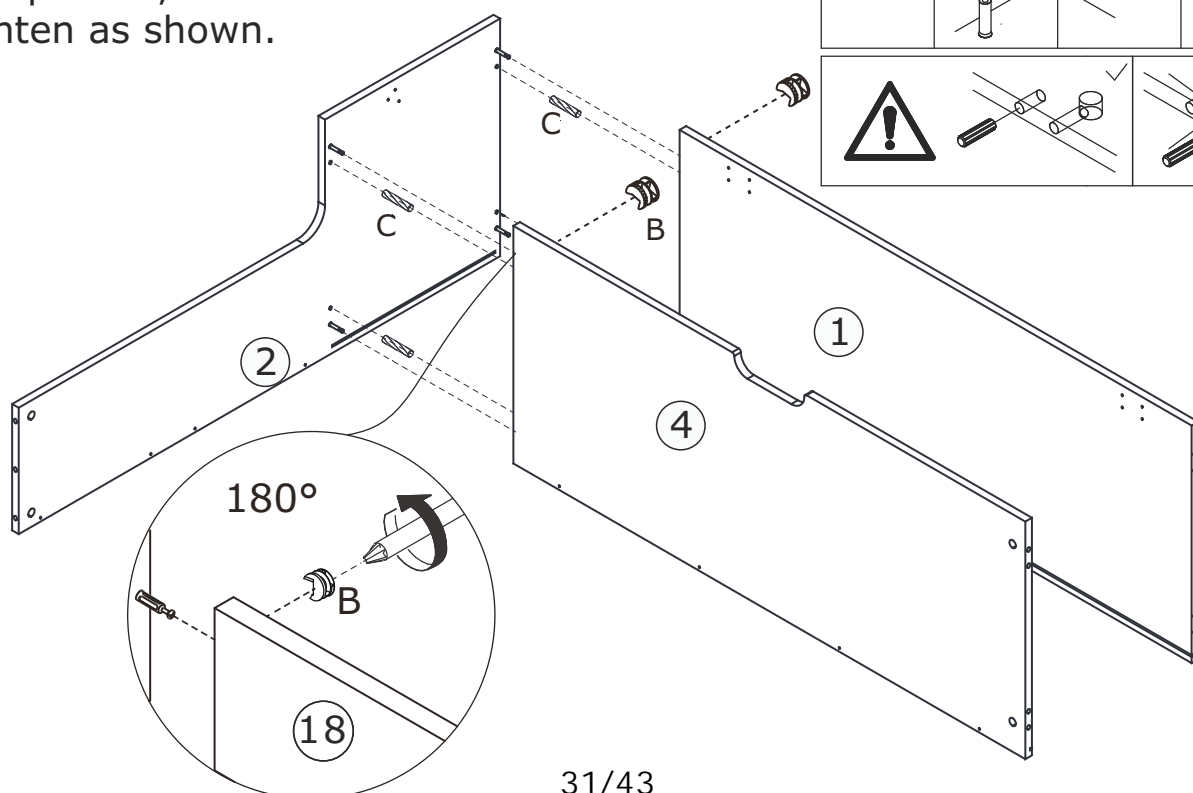


Ø 15 x 11 mm

C x 4



Attach plate 2 to plate 1 and 4 with wooden dowel(C), insert cam lock(B) into plate 1,4 and turn clockwise to tighten as shown.



29

B x 4

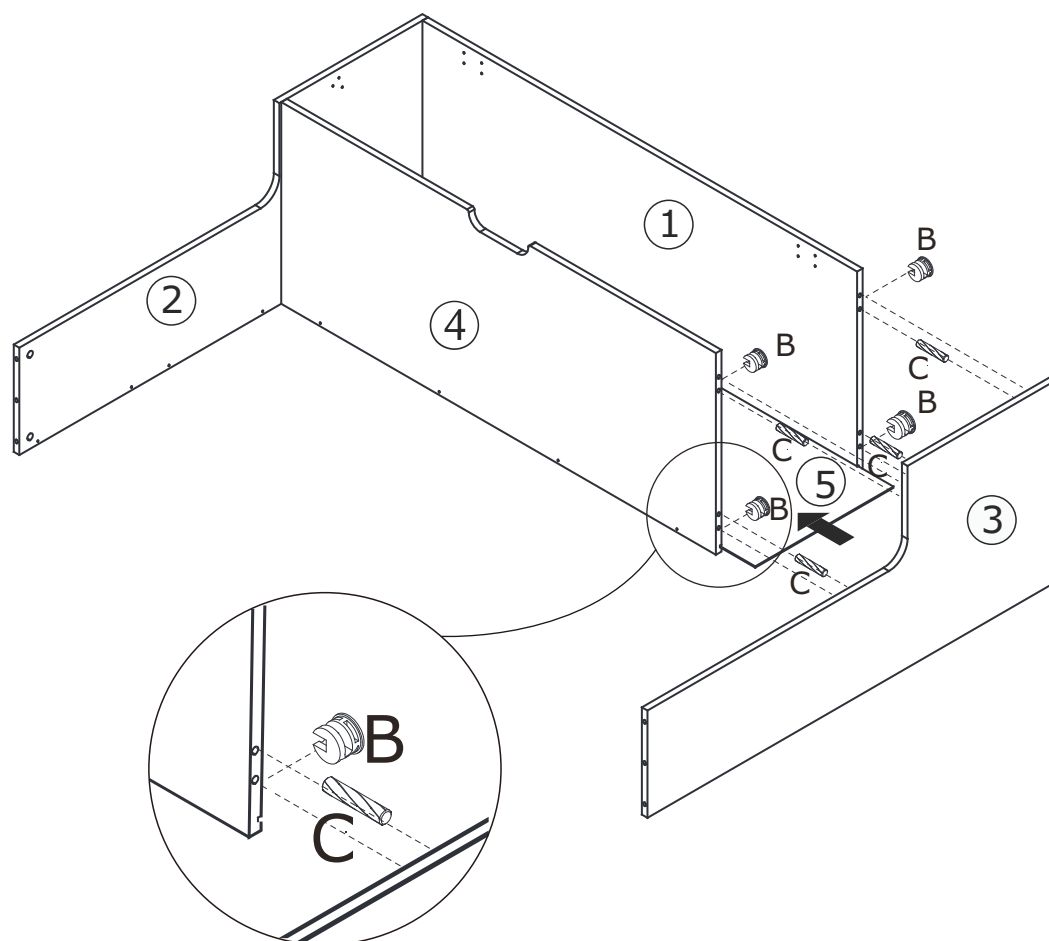
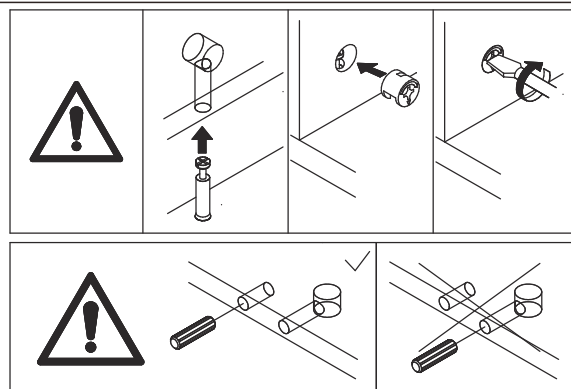


Ø 15 x 11 mm

C x 4



Slide plate 5 into available slots at first. Attach plate 3 to another side of plate 1 and 4 with wooden dowel(C), insert cam lock(B) into plate 1,4 and turn clockwise to tighten as shown.

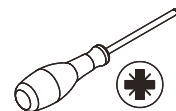


30

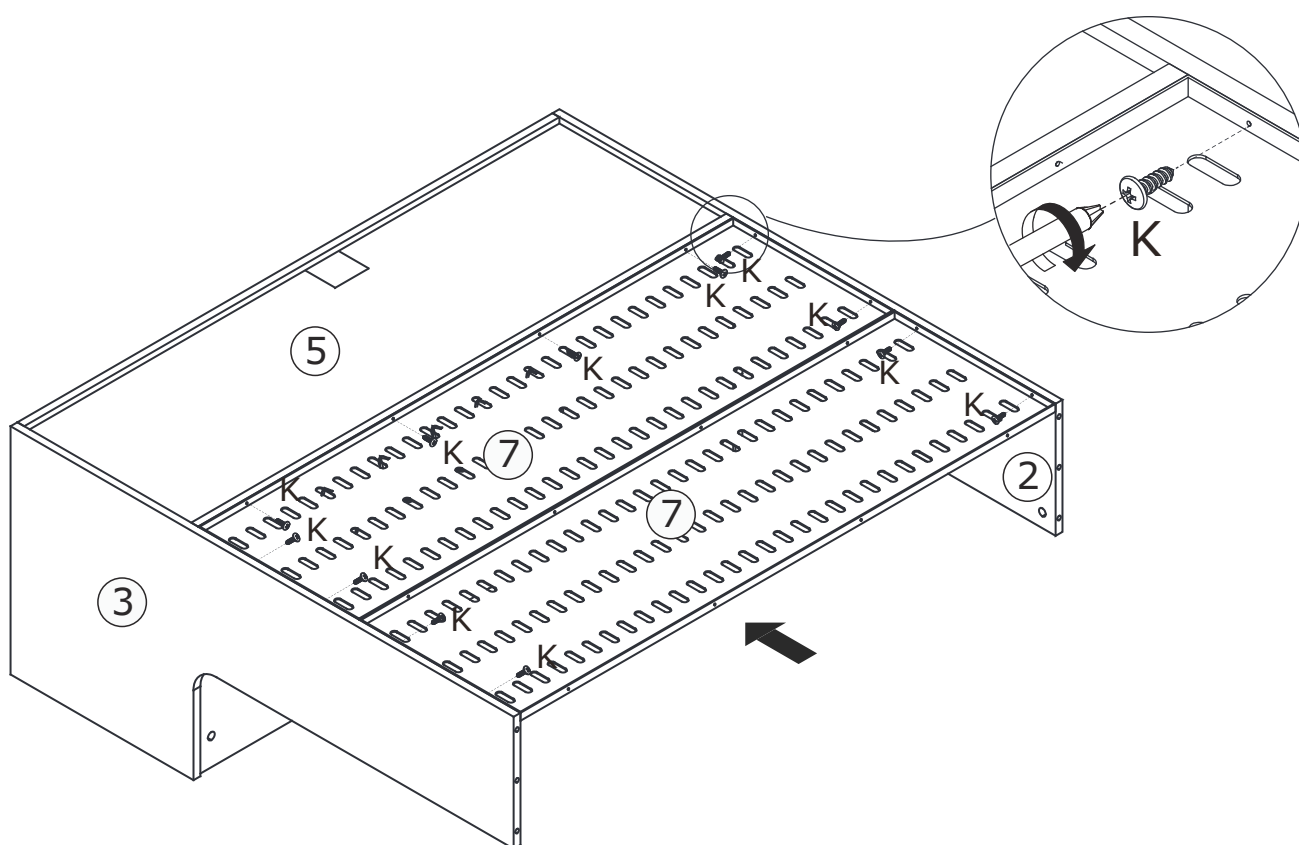
K x 12



Ø 3 x 12 mm



Fix iron plate 7 with plate 2,3 and 5 using screw(K) as shown.



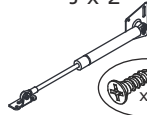
31

H x 8

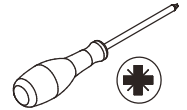


Ø3 x 12 mm

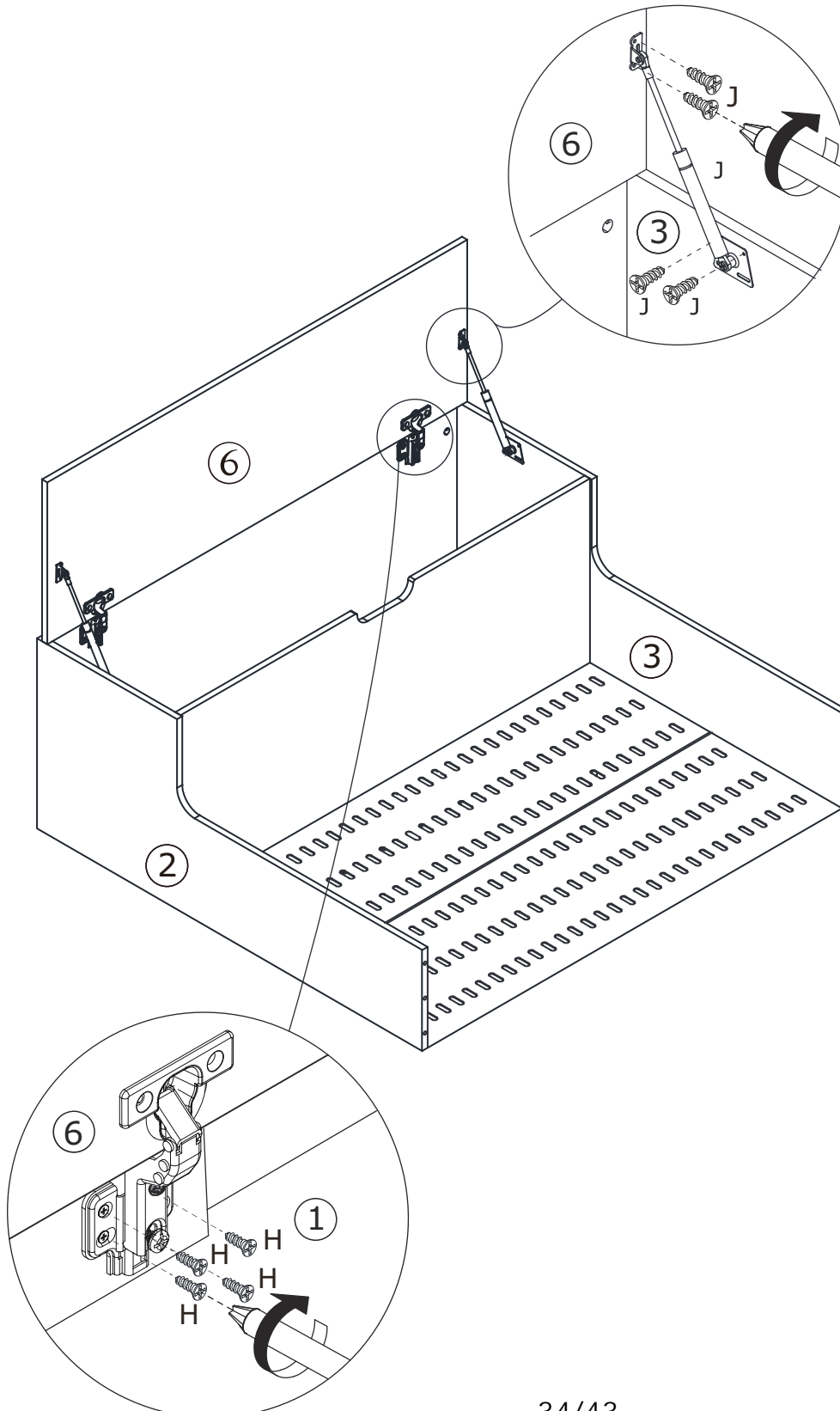
J x 2



x 8+2



Attach door plate 6 to plate 1 by fixing hinge with screw(H) as shown.
Fix part(J) to plate 2,3 and 6 using screw(H) as shown.



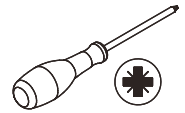
32

B x 4

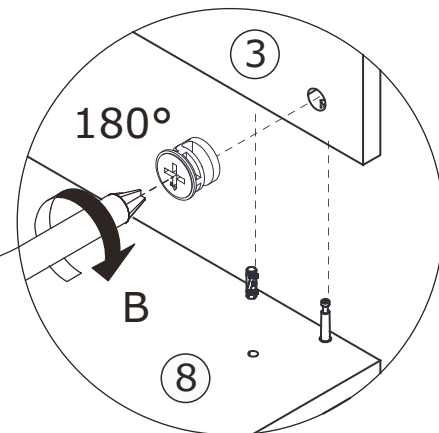
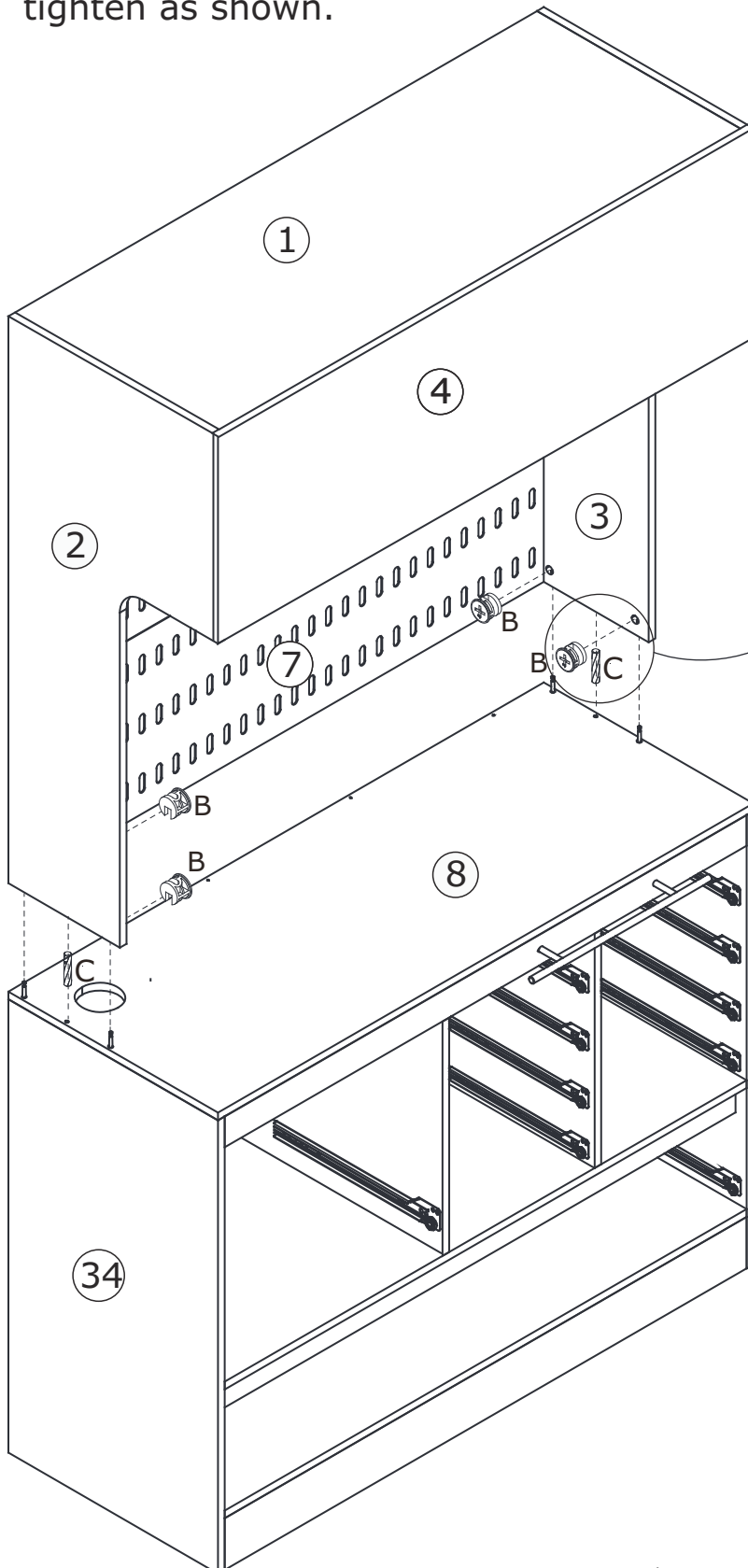
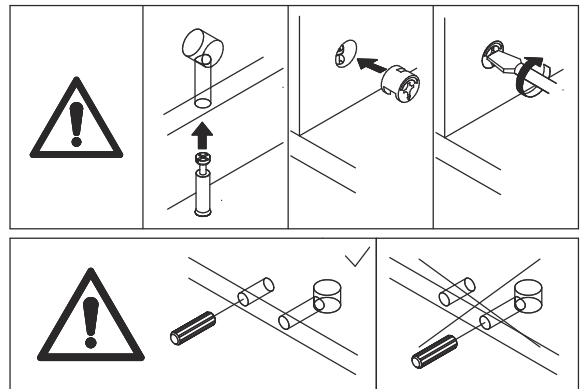


Ø 15 x 11 mm

C x 2



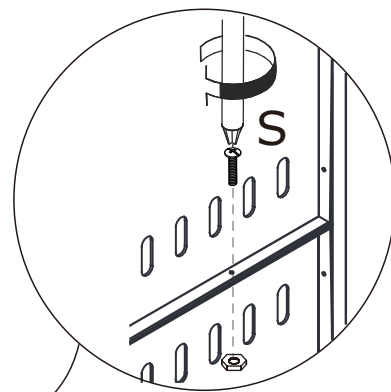
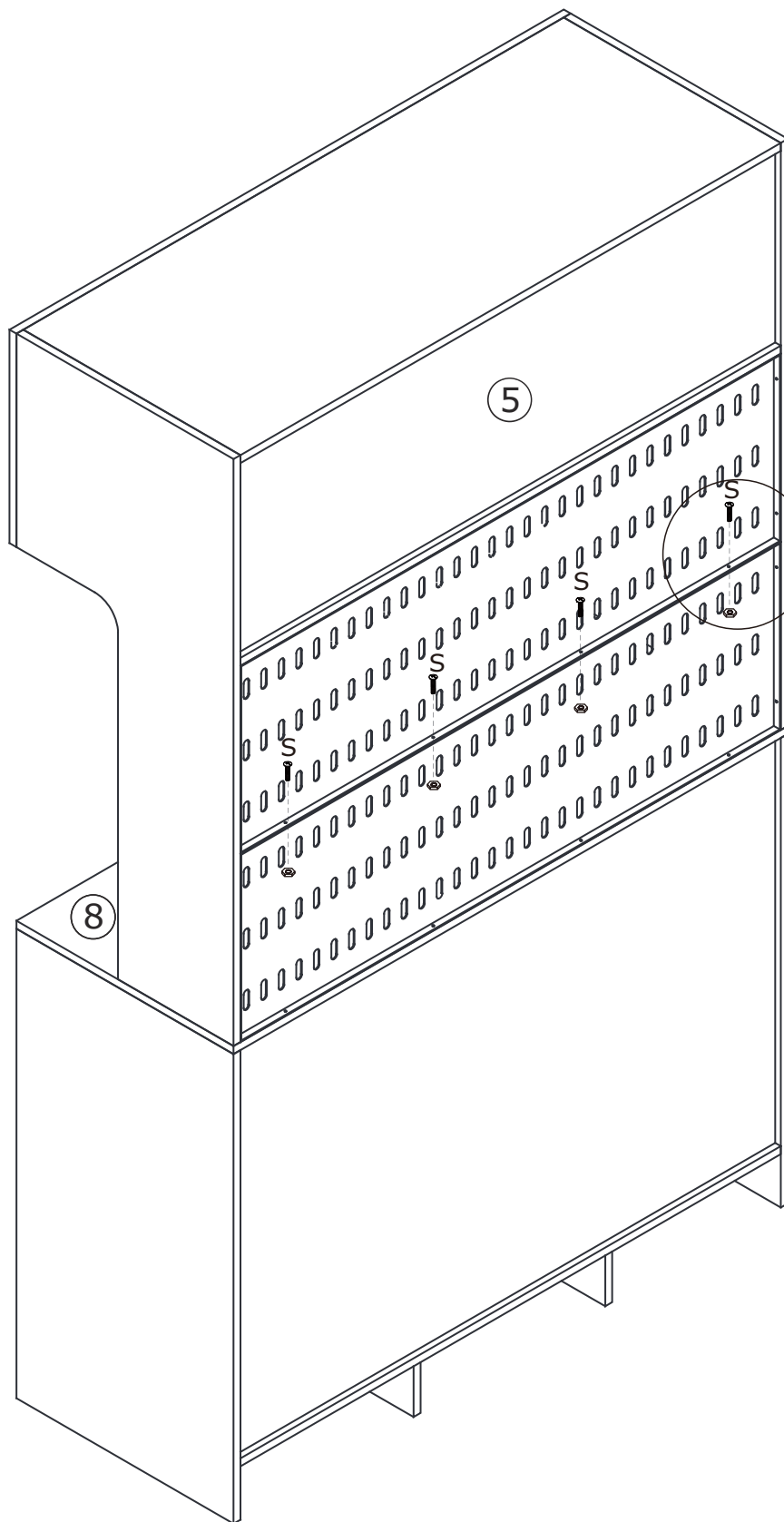
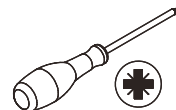
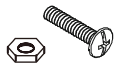
Connect the two assembled components with wooden dowel(C), insert cam lock(B) into plate 2,3 and turn clockwise to tighten as shown.



Require more than 2 people!

33

S x 4



34

K x 4

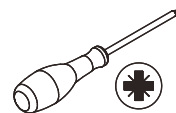


Ø3 x 12 mm

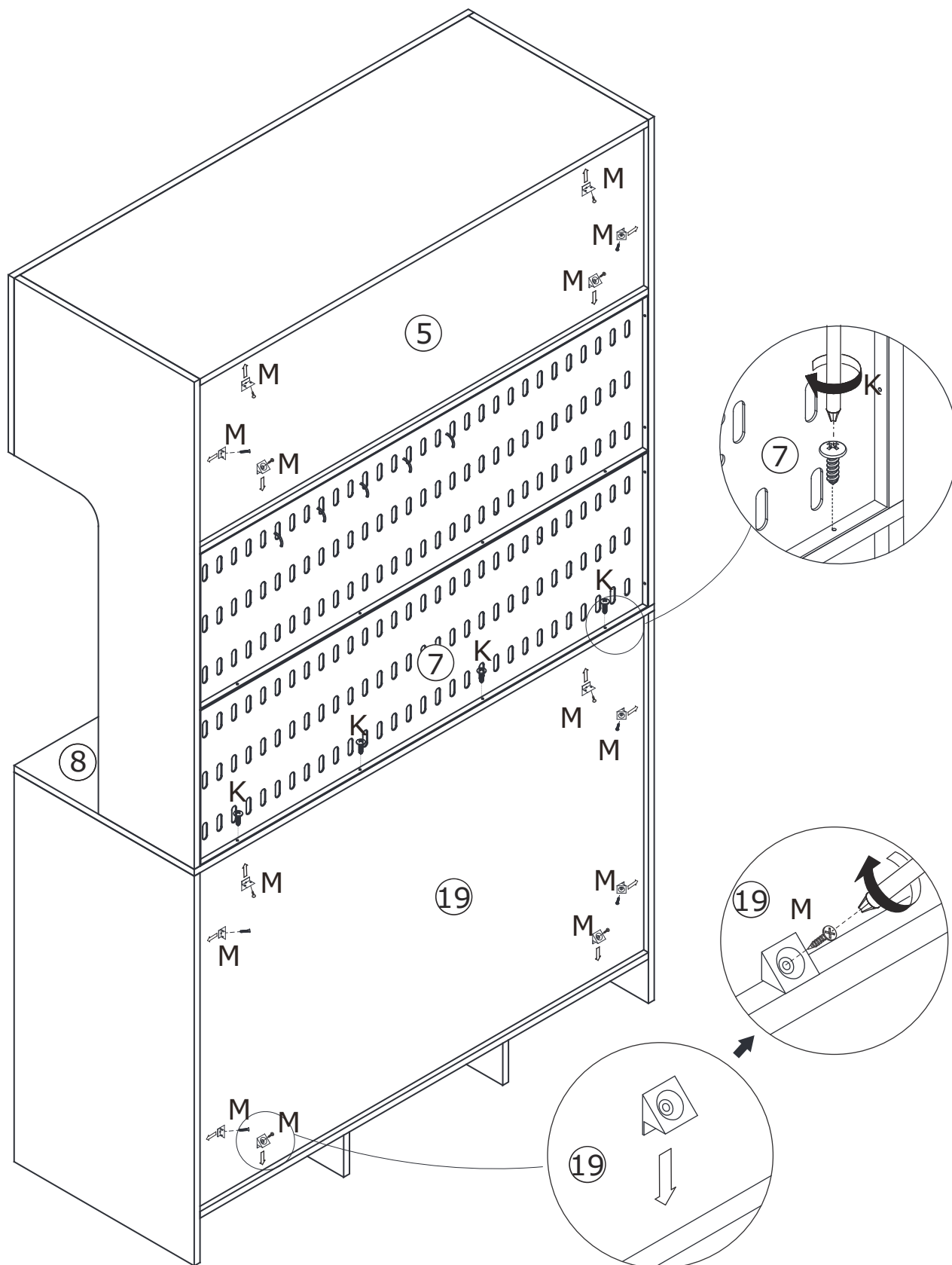
M x 14



Ø3 x 10 mm



Fix iron plate 7 with plate 8 using screw(K) as shown.
Reinforce back plate 5 using part(M) as shown.



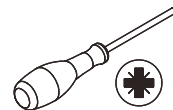
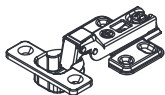
35

D x 4

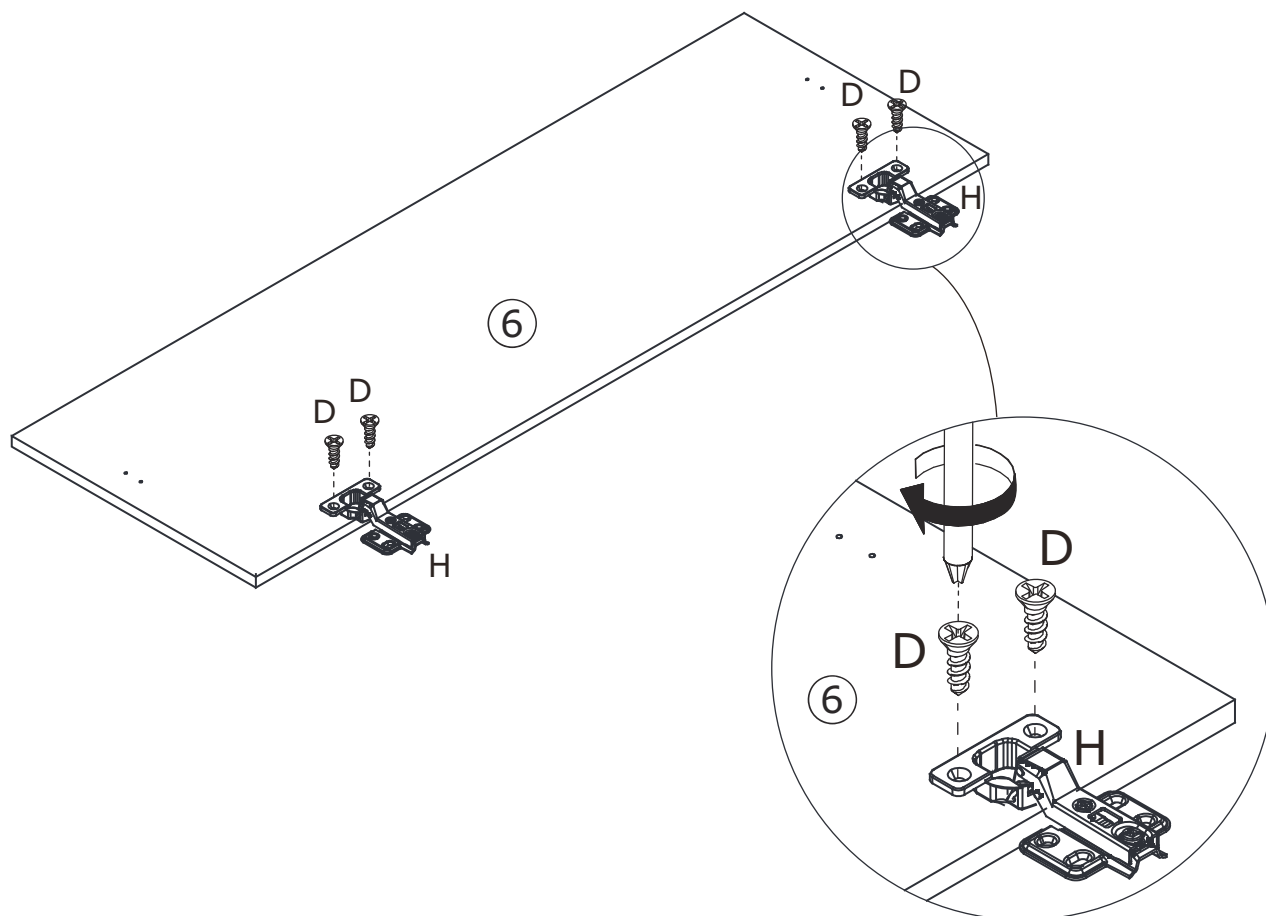


Ø3 x 12 mm

H x 2



Fix hinge(H) to plate 6 using screw(D) as shown.

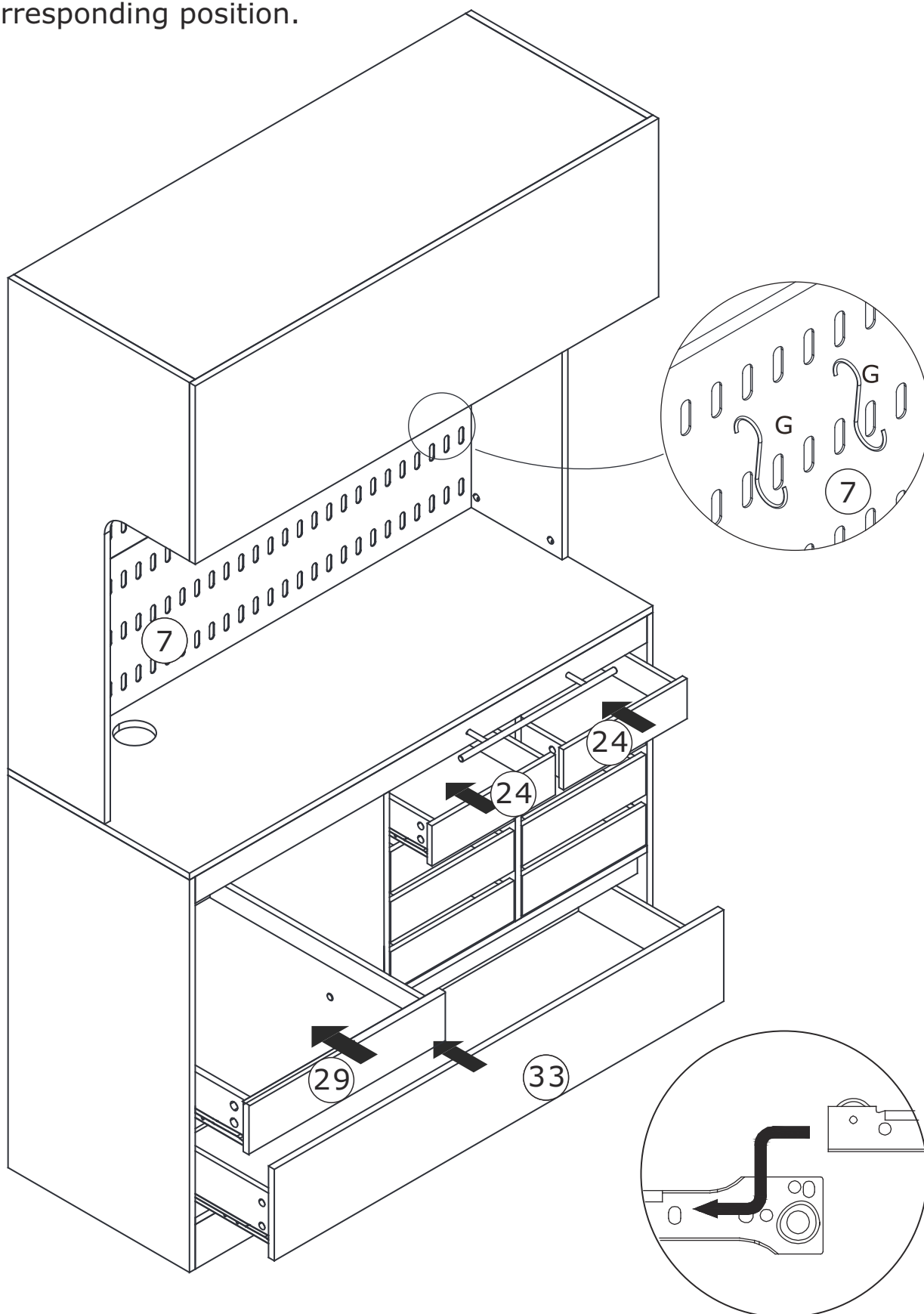


36

G x 5



Place the hook, align rails, slide drawers into corresponding position.

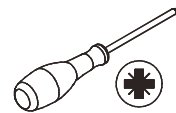


37

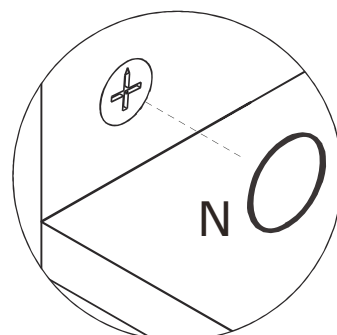
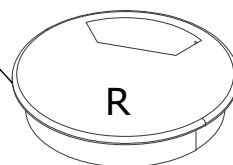
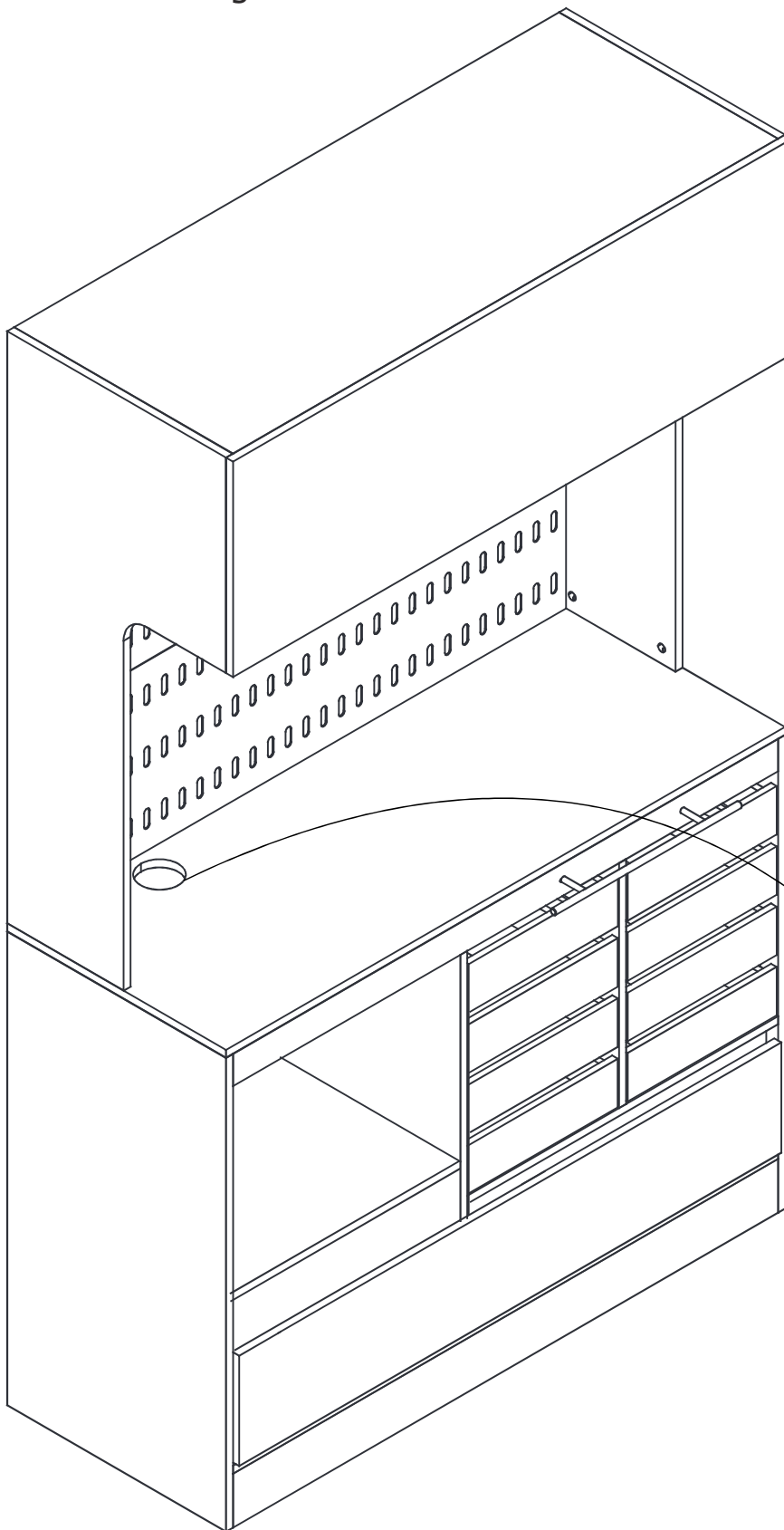
N x 140



R x 1

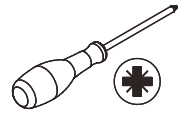
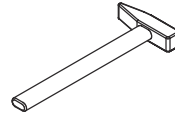
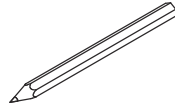


Cover cam lock using sticker(N) as shown.

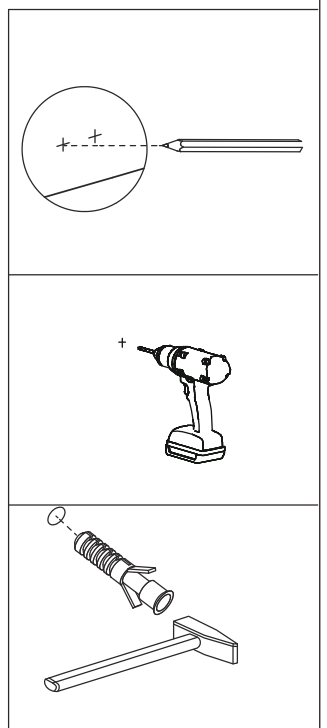
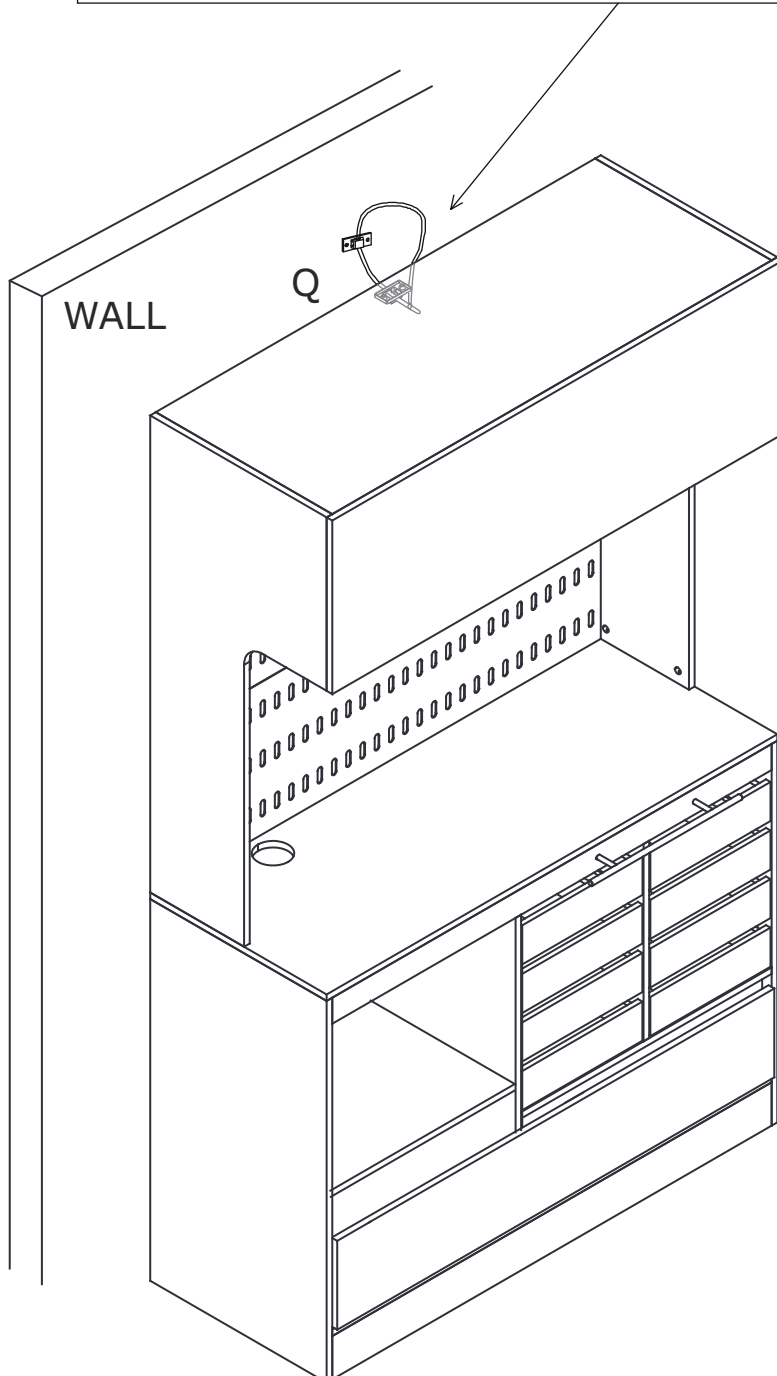
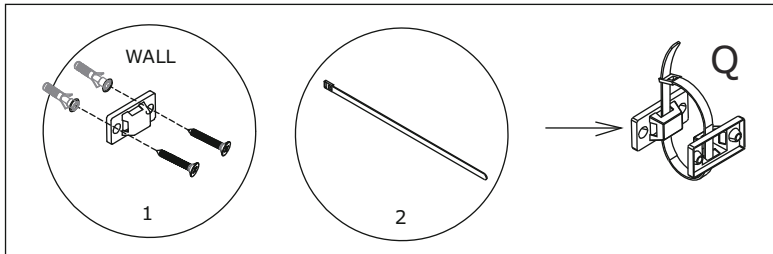


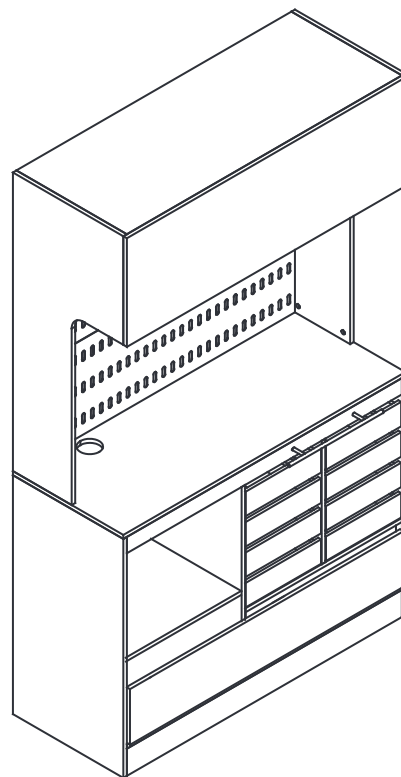
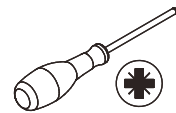
38

Q x 1

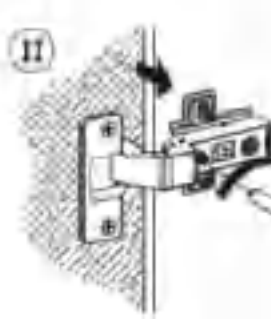
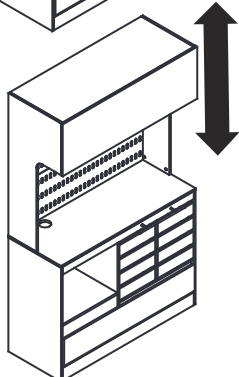
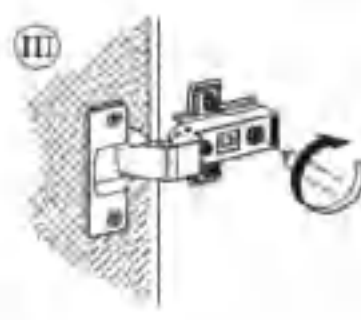
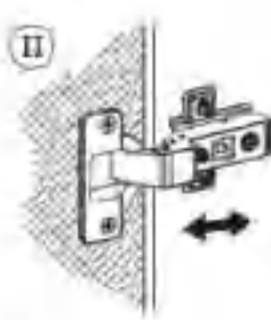
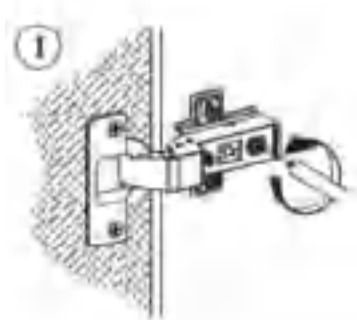
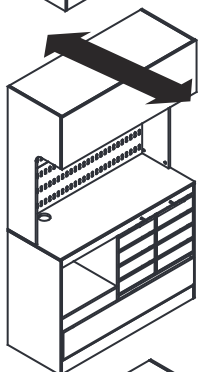
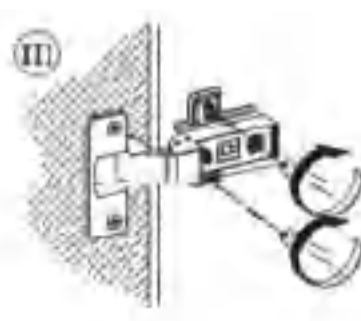
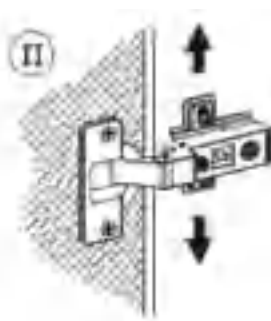
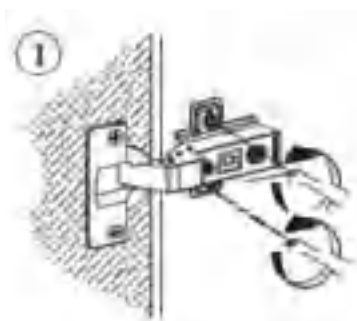
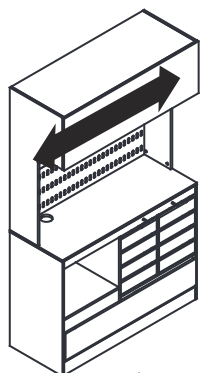


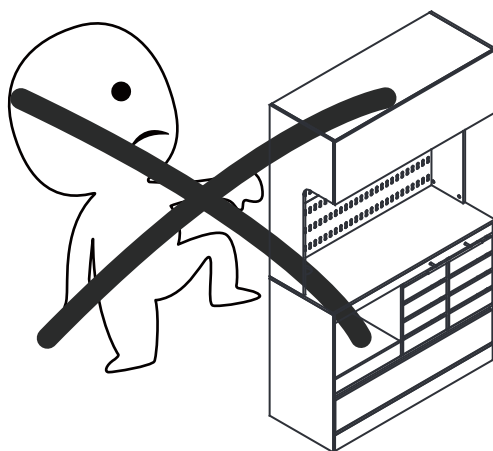
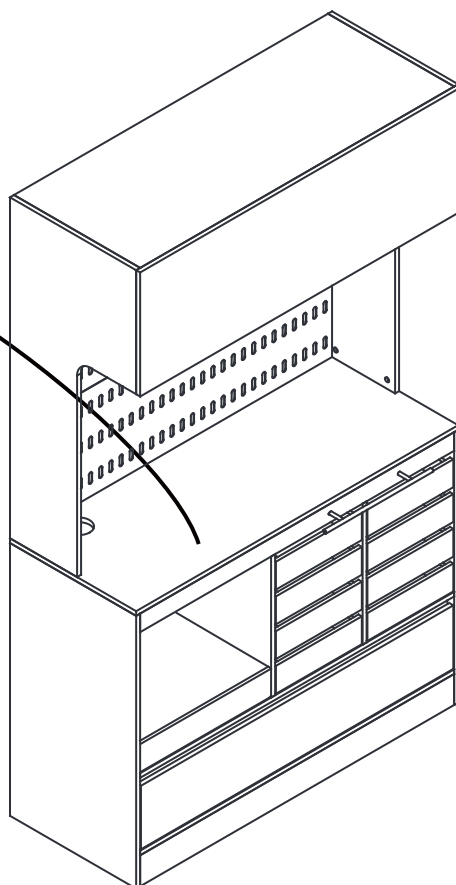
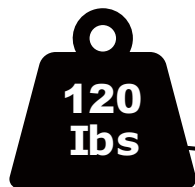
Install anti-tipping device(Q) as shown.





If there is misalignment after you install,
adjust the screw to the best condition





Serious or fatal crushing injuries can occur from furniture tip-over.
To further reduce the risk of serious injury and death from tip-overs:

Schwere oder tödliche Quetschverletzungen können durch Umkippen von
Möbeln auftreten.
Um das Risiko schwerer Verletzungen und Todesfälle durch Umkippungen
weiter zu reduzieren.

WARRANTY

WARRANTY CLAIMS

- There is a 30-day warranty for broken furniture or any other problems that do not work properly. The warranty will start from the date of purchase which must be verified by proof of purchase.
- Before making a claim, we may be able to answer your query, simply call us. Please leave your purchase order number, along with some details of the problem, if you want a replacement part. We will arrange within 48 hours. If there is out of stock, we will reply with a shipping date.
- The product must be used in accordance with the instructions provided. For health reasons.
- For other reasons, if the furniture needs to be returned, it must be cleaned and dried and operated within 30 days of receipt.

Type of Warranty Claim

- Failure to follow the furniture instructions will invalidate the warranty. Attention please.
- Does not include damage during installation, but includes damage during transportation.

Scope of responsibility

- Shall not bear any responsibility for misuse or user damage and / or loss of parts during the installation of furniture.
- After using, the damage and scratches of the furniture are not covered by the warranty.

The Warranty Relates to All Bought in The Us and Covers The Following Areas

- Sheet parts: 1 month from the date of purchase.
- Electrical parts: 1 month from the date of purchase.

RETURNS

CHANGED YOUR MIND AND NEED TO RETURN YOUR ITEM?

PLEASE FOLLOW THE BELOW INSTRUCTIONS:

- If you have purchased and have simply changed your mind, follow the retailer's instructions for returns.

DEFECTIVE ITEMS

- If your item is defective in any way, i.e. it doesn't work but you can't identify why, in the first instance, please call us.

DAMAGED ITEMS

- If you receive an order with obvious shipping damage from the retailer, then we suggest the delivery is refused. If the delivery has been accepted and then shipping damage is found, please follow the specific instructions advised by the retailer.
In all circumstances please save all packaging material and paperwork for the order. Please be aware that if you dispose of packaging material or attempt to return the merchandise without contacting the fulfiller, you jeopardise your chances of making a claim, and you may not receive a credit for the return.