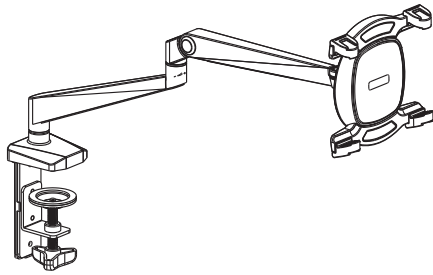


Tabletop Arm Mount

for Tablets

INSTRUCTION MANUAL

Thank you for choosing CTA Digital's product. We hope that you will enjoy using it. Please follow the guidelines and instructions as laid out in this instruction manual.



PAD-TAM

Installation guide



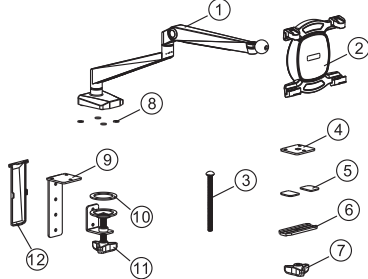
M5X8MM
A(3PCS)

M5X6MM
B(2PCS)

3X3MM
C(1PCS)

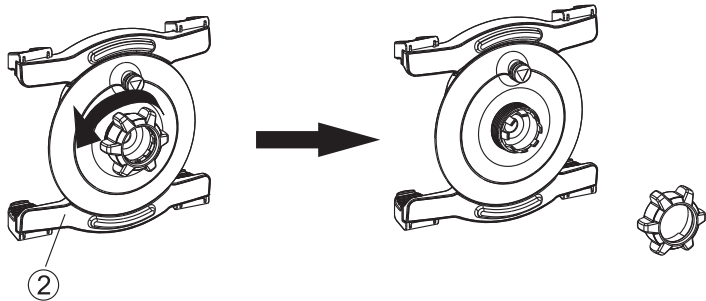
4X4MM
D(1PCS)

① Arm	1PCS	1
② Mount	1PCS	2
③ Screw	1PCS	2
④ Fixed Plate	1PCS	
⑤ LG Anti-slip Rubber	2PCS	3
⑥ Washer	1PCS	
⑦ Knob nut	1PCS	
⑧ Anti-slip rubber	4PCS	
⑨ Bracket Support	1PCS	4
⑩ Round Anti-slip Rubber	1PCS	
⑪ Knob	1PCS	
⑫ Plastic Cover Plate	1PCS	



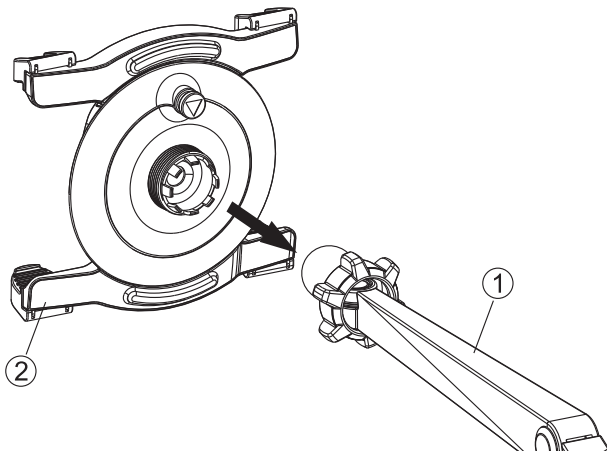
STEP1

Screw the nut out counterclockwise



STEP2

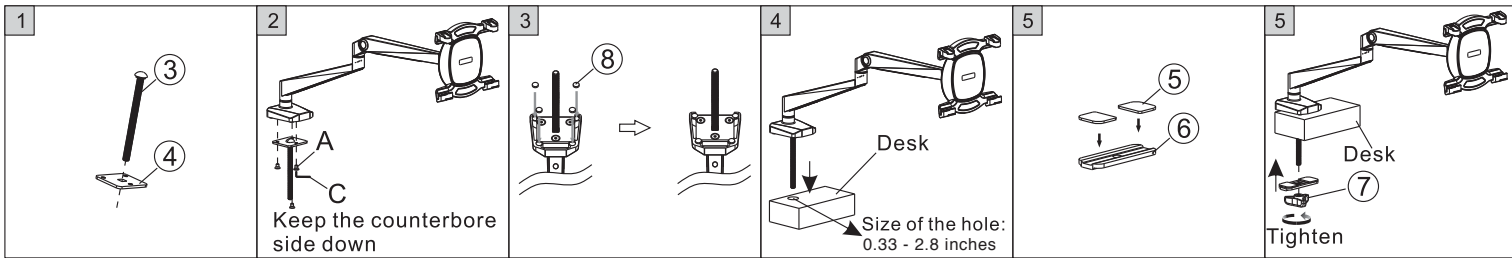
Install the Mount to the Arm



STEP3-B

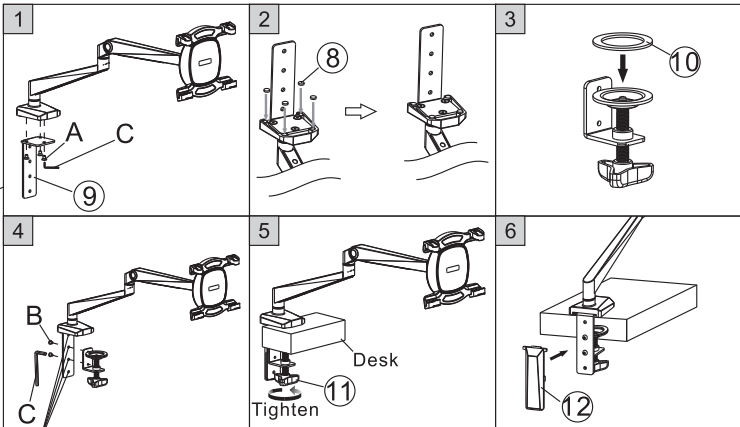
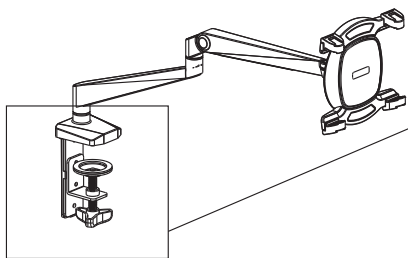
Option 2:Grommet

▲ For table thickness:



STEP3-A

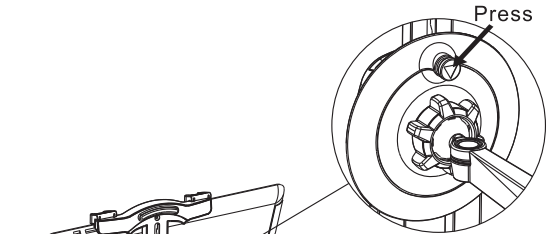
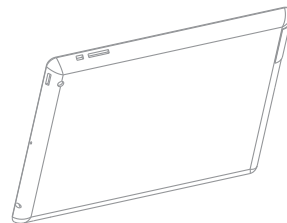
Option 1:Clamp



▲ For table thickness: 0.79 – 3.5 inches
Select right holes according to the thickness of desk

STEP5

Loading a Tablet

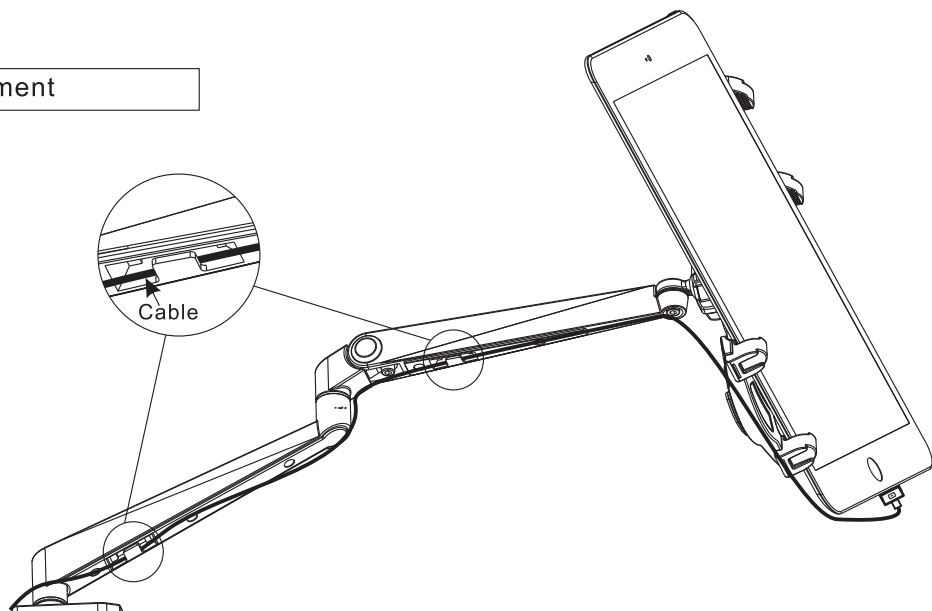


1. Press the button on the back to open the top Grip.
2. Put the tablet into the Mount and adjust the grips to lock and secure the tablet into place.

For larger tablets, you may need to press down on your tablet to expand the spring-loaded grip to fit it into the mount.

STEP6

Using cord management



CAUTION

This product contains small items that could be a choking hazard if swallowed. Keep these items away from young children.

- Please carefully read the instruction manual before attempting installation and follow each procedure step-by-step.
- Make sure the grip on your tablet is firmly in place and completely secured to prevent accidental falls.
- Make sure installation is done correctly before loading your tablet to the mount.

Your tablet must be a maximum of 2.2 lb to use this arm mount.
Any accidental drops or damages are not the responsibility of CTA Digital Inc.

Note: This product is intended for indoor use only.